

# VICEROY BRICKELL

## THE RESIDENCES

CITY FLATS FLOORPLANS



# VICEROY BRICKELL

## THE RESIDENCES

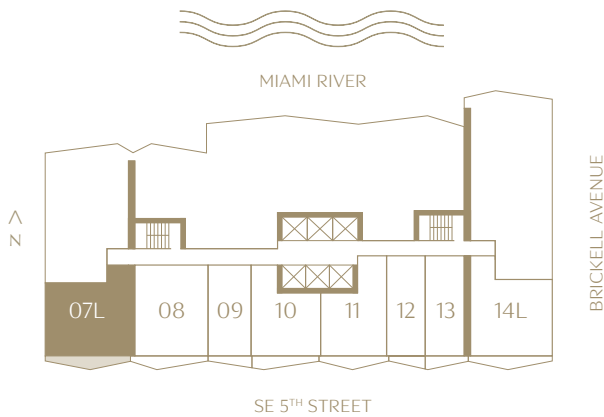
### Residence 07L

1 BEDROOMS | 1 BATHROOMS  
LEVELS 2 TO 12  
SOUTHWEST EXPOSURE

INTERIOR  
871 SQ. FT. | 80.92 SQM

TERRACE  
104 SQ. FT. | 9.66 SQM

TOTAL  
975 SQ. FT. | 90.58 SQM



The dimensions stated for this floor plan are approximate because there are various recognized methods for calculating the square footage of a unit. The square footage stated here is calculated from the exterior boundaries of the exterior walls to the centerline of interior demising walls without deductions for cutouts, curves, or architectural features. This method typically results in quoted dimensions greater than the dimensions that would be determined by using other accepted methods. The definition of "Unit" and the calculation method to be relied upon is set forth by 444 BRICKELL TWO, LLC (the "Developer") in Developer's prospectus which method may result in a square footage calculation less than the result of the calculation method used here. VICEROY BRANDS, LLC owns the mark and name Viceroy®. The Developer is permitted to use the name and logo of The Related Group® and Viceroy® pursuant to license agreements which are valid unless terminated or expired; neither The Related Group nor Viceroy Brands, LLC are the Developer. Consult the Developer's prospectus to learn what is included with Unit purchase and to understand Unit dimensions. 2024 © 444 BRICKELL TWO, LLC with all rights reserved.

VICEROY BRICKELL  
THE RESIDENCES

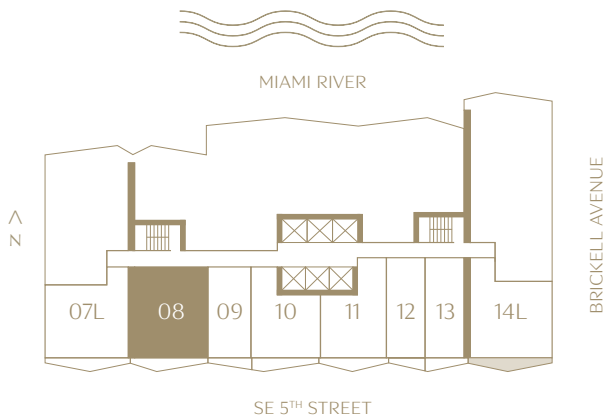
Residence 08

1 BEDROOM | 1 BATHROOM  
LEVELS 2 TO 12  
SOUTH EXPOSURE

INTERIOR  
862 SQ. FT. | 80.08 SQM

TERRACE  
96 SQ. FT. | 8.92 SQM

TOTAL  
958 SQ. FT. | 89 SQM



The dimensions stated for this floor plan are approximate because there are various recognized methods for calculating the square footage of a unit. The square footage stated here is calculated from the exterior boundaries of the exterior walls to the centerline of interior demising walls without deductions for cutouts, curves, or architectural features. This method typically results in quoted dimensions greater than the dimensions that would be determined by using other accepted methods. The definition of "Unit" and the calculation method to be relied upon is set forth by 444 BRICKELL TWO, LLC (the "Developer") in Developer's prospectus which method may result in a square footage calculation less than the result of the calculation method used here. VICEROY BRANDS, LLC owns the mark and name Viceroy®. The Developer is permitted to use the name and logo of The Related Group® and Viceroy® pursuant to license agreements which are valid unless terminated or expired; neither The Related Group nor Viceroy Brands, LLC are the Developer. Consult the Developer's prospectus to learn what is included with Unit purchase and to understand Unit dimensions. 2024 © 444 BRICKELL TWO, LLC with all rights reserved.

VICEROY BRICKELL  
THE RESIDENCES

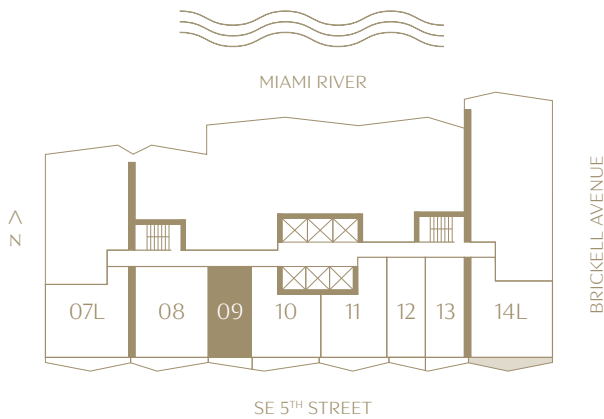
Residence 09

STUDIO | 1 BATHROOM  
LEVELS 2 TO 12  
SOUTH EXPOSURE

INTERIOR  
485 SQ. FT. | 45.06 SQM

TERRACE  
57 SQ. FT. | 5.30 SQM

TOTAL  
542 SQ. FT. | 50.35 SQM



The dimensions stated for this floor plan are approximate because there are various recognized methods for calculating the square footage of a unit. The square footage stated here is calculated from the exterior boundaries of the exterior walls to the centerline of interior demising walls without deductions for cutouts, curves, or architectural features. This method typically results in quoted dimensions greater than the dimensions that would be determined by using other accepted methods. The definition of "Unit" and the calculation method to be relied upon is set forth by 444 BRICKELL TWO, LLC (the "Developer") in Developer's prospectus which method may result in a square footage calculation less than the result of the calculation method used here. VICEROY BRANDS, LLC owns the mark and name Viceroy®. The Developer is permitted to use the name and logo of The Related Group® and Viceroy® pursuant to license agreements which are valid unless terminated or expired; neither The Related Group nor Viceroy Brands, LLC are the Developer. Consult the Developer's prospectus to learn what is included with Unit purchase and to understand Unit dimensions. 2024 © 444 BRICKELL TWO, LLC with all rights reserved.



# VICEROY BRICKELL

THE RESIDENCES

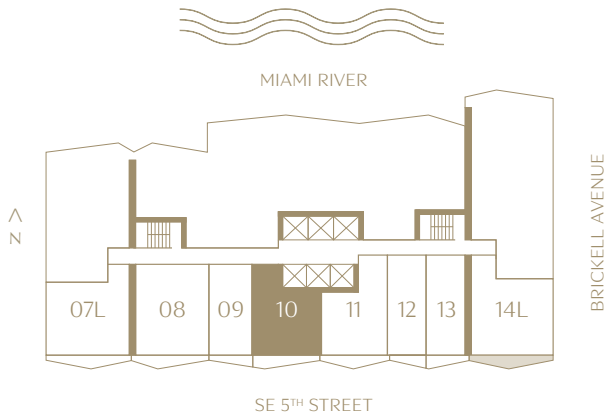
## Residence 10

1 BEDROOM | 1 BATHROOM  
LEVELS 2 TO 12  
SOUTH EXPOSURE

INTERIOR  
686 SQ. FT. | 63.73 SQM

TERRACE  
78 SQ. FT. | 7.25 SQM

TOTAL  
764 SQ. FT. | 70.98 SQM



The dimensions stated for this floor plan are approximate because there are various recognized methods for calculating the square footage of a unit. The square footage stated here is calculated from the exterior boundaries of the exterior walls to the centerline of interior demising walls without deductions for cutouts, curves, or architectural features. This method typically results in quoted dimensions greater than the dimensions that would be determined by using other accepted methods. The definition of "Unit" and the calculation method to be relied upon is set forth by 444 BRICKELL TWO, LLC (the "Developer") in Developer's prospectus which method may result in a square footage calculation less than the result of the calculation method used here. VICEROY BRANDS, LLC owns the mark and name Viceroy®. The Developer is permitted to use the name and logo of The Related Group® and Viceroy® pursuant to license agreements which are valid unless terminated or expired; neither The Related Group nor Viceroy Brands, LLC are the Developer. Consult the Developer's prospectus to learn what is included with Unit purchase and to understand Unit dimensions. 2024 © 444 BRICKELL TWO, LLC with all rights reserved.



# VICEROY BRICKELL

## THE RESIDENCES

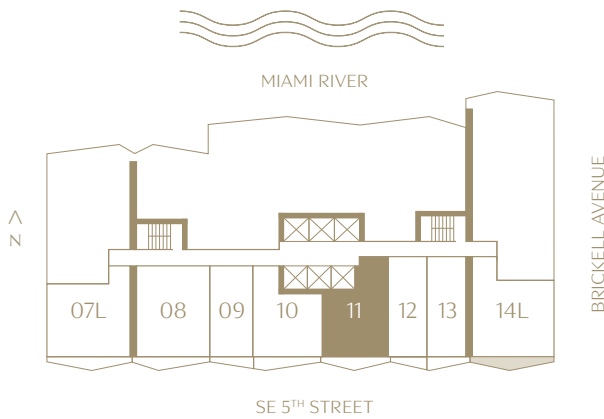
### Residence 11

1 BEDROOM | 1 BATHROOM  
LEVELS 2 TO 12  
SOUTH EXPOSURE

INTERIOR  
699 SQ. FT. | 64.94 SQM

TERRACE  
85 SQ. FT. | 7.90 SQM

TOTAL  
784 SQ. FT. | 72.84 SQM



The dimensions stated for this floor plan are approximate because there are various recognized methods for calculating the square footage of a unit. The square footage stated here is calculated from the exterior boundaries of the exterior walls to the centerline of interior demising walls without deductions for cutouts, curves, or architectural features. This method typically results in quoted dimensions greater than the dimensions that would be determined by using other accepted methods. The definition of "Unit" and the calculation method to be relied upon is set forth by 444 BRICKELL TWO, LLC (the "Developer") in Developer's prospectus which method may result in a square footage calculation less than the result of the calculation method used here. VICEROY BRANDS, LLC owns the mark and name Viceroy®. The Developer is permitted to use the name and logo of The Related Group® and Viceroy® pursuant to license agreements which are valid unless terminated or expired; neither The Related Group nor Viceroy Brands, LLC are the Developer. Consult the Developer's prospectus to learn what is included with Unit purchase and to understand Unit dimensions. 2024 © 444 BRICKELL TWO, LLC with all rights reserved.



VICEROY BRICKELL  
THE RESIDENCES

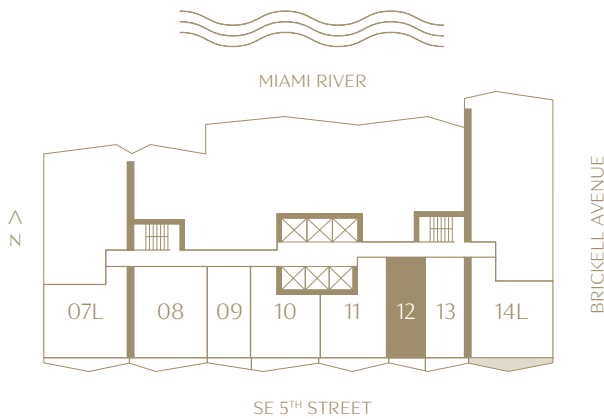
Residence 12

STUDIO | 1 BATHROOM  
LEVELS 2 TO 12  
SOUTH EXPOSURE

INTERIOR  
489 SQ. FT. | 45.43 SQM

TERRACE  
53 SQ. FT. | 4.92 SQM

TOTAL  
542 SQ. FT. | 50.35 SQM



The dimensions stated for this floor plan are approximate because there are various recognized methods for calculating the square footage of a unit. The square footage stated here is calculated from the exterior boundaries of the exterior walls to the centerline of interior demising walls without deductions for cutouts, curves, or architectural features. This method typically results in quoted dimensions greater than the dimensions that would be determined by using other accepted methods. The definition of "Unit" and the calculation method to be relied upon is set forth by 444 BRICKELL TWO, LLC (the "Developer") in Developer's prospectus which method may result in a square footage calculation less than the result of the calculation method used here. VICEROY BRANDS, LLC owns the mark and name Viceroy®. The Developer is permitted to use the name and logo of The Related Group® and Viceroy® pursuant to license agreements which are valid unless terminated or expired; neither The Related Group nor Viceroy Brands, LLC are the Developer. Consult the Developer's prospectus to learn what is included with Unit purchase and to understand Unit dimensions. 2024 © 444 BRICKELL TWO, LLC with all rights reserved.



VICEROY BRICKELL  
THE RESIDENCES

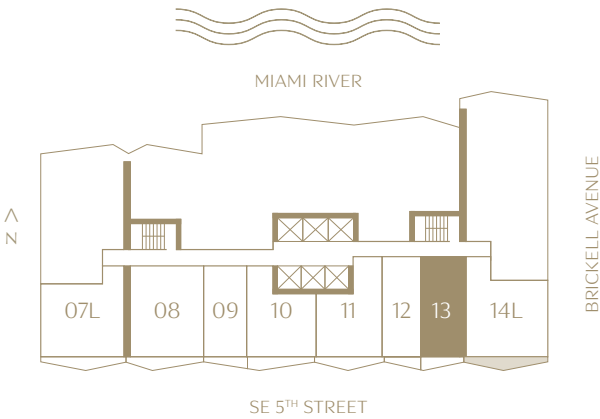
Residence 13

STUDIO | 1 BATHROOM  
LEVELS 2 TO 12  
SOUTH EXPOSURE

INTERIOR  
539 SQ. FT. | 50.07 SQM

TERRACE  
45 SQ. FT. | 4.18 SQM

TOTAL  
584 SQ. FT. | 54.26 SQM



The dimensions stated for this floor plan are approximate because there are various recognized methods for calculating the square footage of a unit. The square footage stated here is calculated from the exterior boundaries of the exterior walls to the centerline of interior demising walls without deductions for cutouts, curves, or architectural features. This method typically results in quoted dimensions greater than the dimensions that would be determined by using other accepted methods. The definition of "Unit" and the calculation method to be relied upon is set forth by 444 BRICKELL TWO, LLC (the "Developer") in Developer's prospectus which method may result in a square footage calculation less than the result of the calculation method used here. VICEROY BRANDS, LLC owns the mark and name Viceroy®. The Developer is permitted to use the name and logo of The Related Group® and Viceroy® pursuant to license agreements which are valid unless terminated or expired; neither The Related Group nor Viceroy Brands, LLC are the Developer. Consult the Developer's prospectus to learn what is included with Unit purchase and to understand Unit dimensions. 2024 © 444 BRICKELL TWO, LLC with all rights reserved.



VICEROY BRICKELL  
THE RESIDENCES

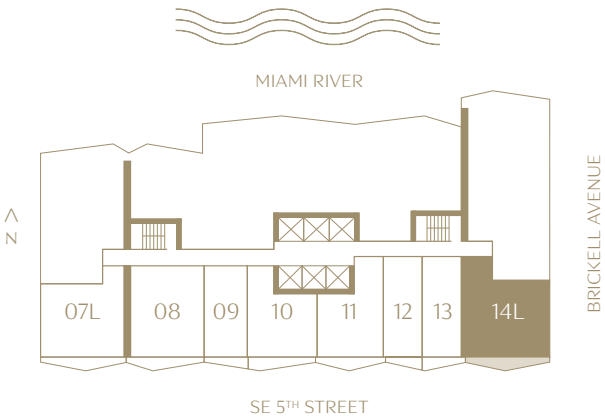
Residence 14L

1 BEDROOM | 1 BATHROOM  
LEVELS 2 TO 12  
SOUTHEAST EXPOSURE

INTERIOR  
896 SQ. FT. | 83.24 SQM

TERRACE  
102 SQ. FT. | 9.47 SQM

TOTAL  
998 SQ. FT. | 92.72 SQM



The dimensions stated for this floor plan are approximate because there are various recognized methods for calculating the square footage of a unit. The square footage stated here is calculated from the exterior boundaries of the exterior walls to the centerline of interior demising walls without deductions for cutouts, curves, or architectural features. This method typically results in quoted dimensions greater than the dimensions that would be determined by using other accepted methods. The definition of "Unit" and the calculation method to be relied upon is set forth by 444 BRICKELL TWO, LLC (the "Developer") in Developer's prospectus which method may result in a square footage calculation less than the result of the calculation method used here. VICEROY BRANDS, LLC owns the mark and name Viceroy®. The Developer is permitted to use the name and logo of The Related Group® and Viceroy® pursuant to license agreements which are valid unless terminated or expired; neither The Related Group nor Viceroy Brands, LLC are the Developer. Consult the Developer's prospectus to learn what is included with Unit purchase and to understand Unit dimensions. 2024 © 444 BRICKELL TWO, LLC with all rights reserved.

# VICEROY BRICKELL

## THE RESIDENCES

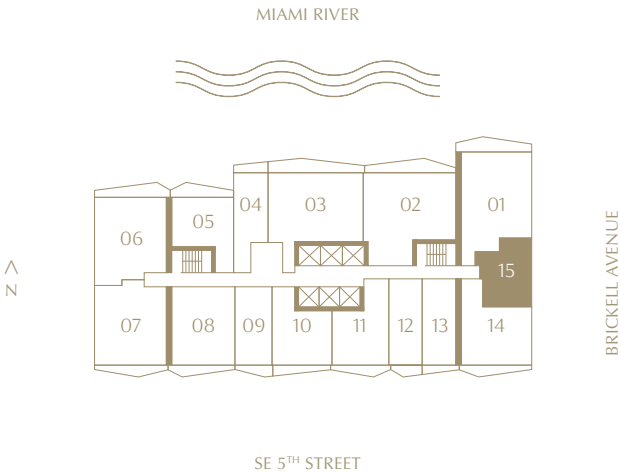
### Residence 15

1 BEDROOM | 1 BATHROOM  
LEVELS 15 TO 42  
EAST EXPOSURE

INTERIOR  
551 SQ. FT. | 51.19 SQM

TERRACE  
10 SQ. FT. | 0.92 SQM

TOTAL  
561 SQ. FT. | 52.11 SQM



The dimensions stated for this floor plan are approximate because there are various recognized methods for calculating the square footage of a unit. The square footage stated here is calculated from the exterior boundaries of the exterior walls to the centerline of interior demising walls without deductions for cutouts, curves, or architectural features. This method typically results in quoted dimensions greater than the dimensions that would be determined by using other accepted methods. The definition of "Unit" and the calculation method to be relied upon is set forth by 444 BRICKELL TWO, LLC (the "Developer") in Developer's prospectus which method may result in a square footage calculation less than the result of the calculation method used here. VICEROY BRANDS, LLC owns the mark and name Viceroy®. The Developer is permitted to use the name and logo of The Related Group® and Viceroy® pursuant to license agreements which are valid unless terminated or expired; neither The Related Group nor Viceroy Brands, LLC are the Developer. Consult the Developer's prospectus to learn what is included with Unit purchase and to understand Unit dimensions. 2024 © 444 BRICKELL TWO, LLC with all rights reserved.

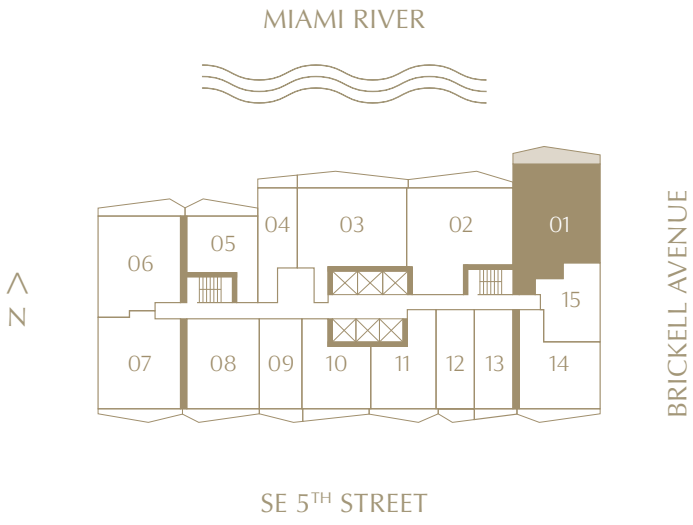
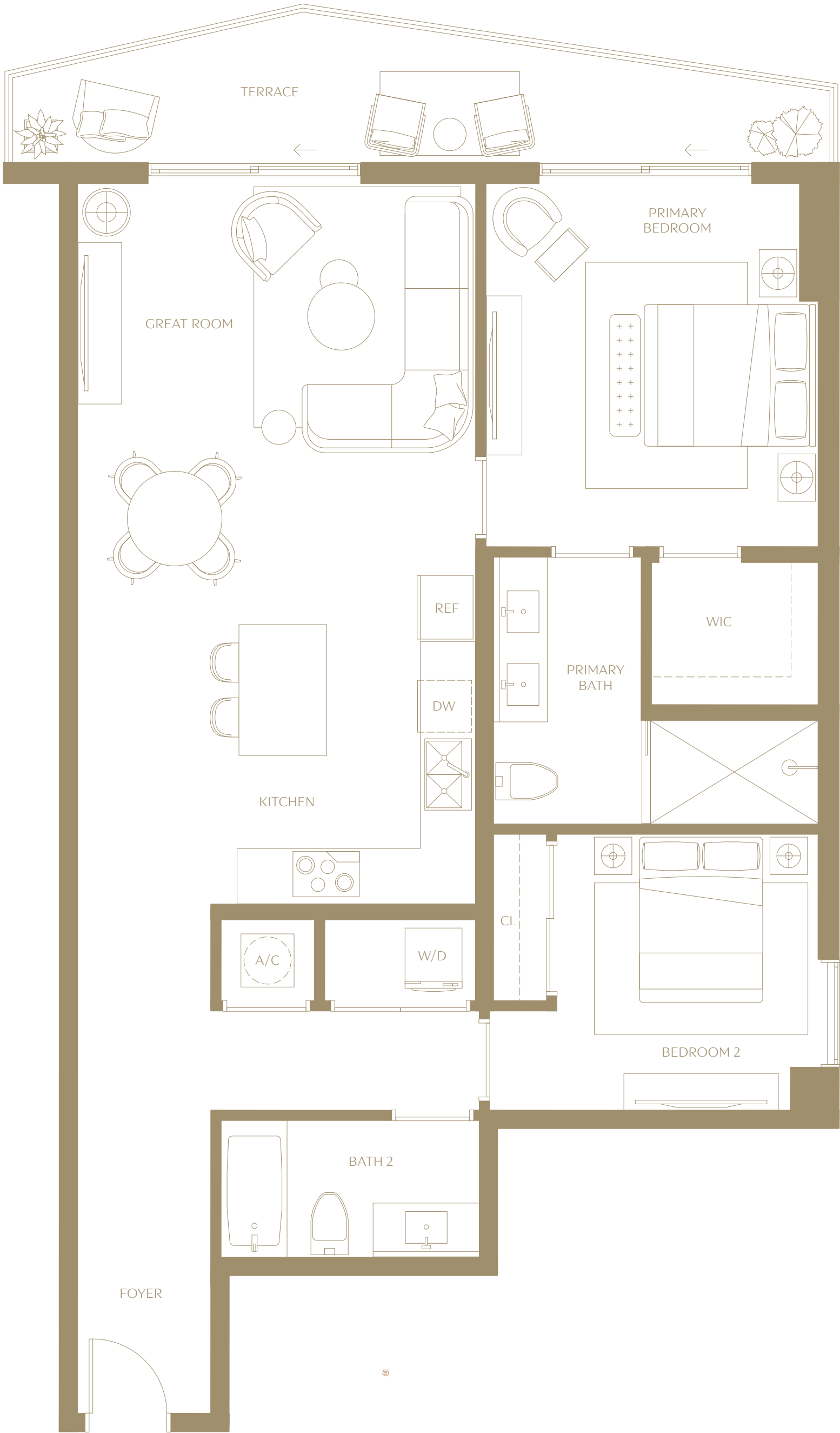


# Residence 01

2 BEDROOMS | 2 BATHROOMS | LEVELS 15 TO 42

INTERIOR	1,217 SQ. FT.	113.06 SQ. MTS.
EXTERIOR	141 SQ. FT.	13 SQ. MTS.

VICEROY  
BRICKELL  
THE RESIDENCES



Sales: Fortune Development Sales & Related Realty

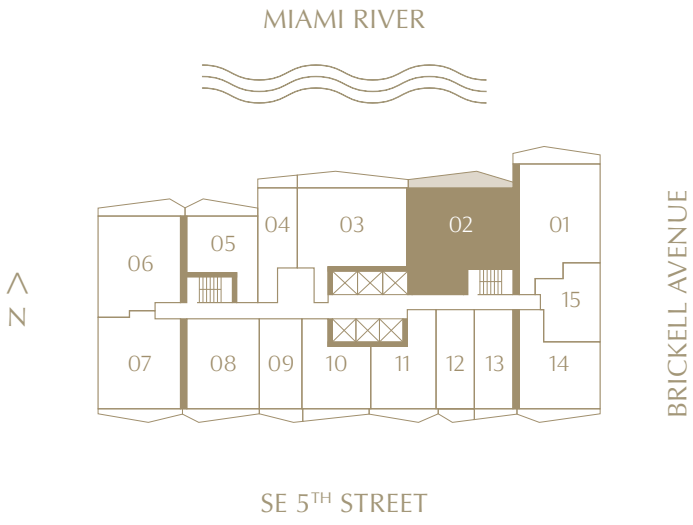
The dimensions stated for this floor plan are approximate because there are various recognized methods for calculating the square footage of a unit. The square footage stated here is calculated from the exterior boundaries of the exterior walls to the centerline of interior demising walls without deductions for cutouts, curves, or architectural features. This method typically results in quoted dimensions greater than the dimensions that would be determined by using other accepted methods. The definition of "Unit" and the calculation method to be relied upon is set forth by 444 BRICKELL TWO, LLC (the "Developer") in Developer's prospectus which method may result in a square footage calculation less than the result of the calculation method used here. VICEROY BRANDS, LLC owns the mark and name Viceroy®. The Developer is permitted to use the name and logo of The Related Group® and Viceroy® pursuant to license agreements which are valid unless terminated or expired; neither The Related Group nor Viceroy Brands, LLC are the Developer. Consult the Developer's prospectus to learn what is included with Unit purchase and to understand Unit dimensions. 2024 © 444 BRICKELL TWO, LLC with all rights reserved.

# Residence 02

VICEROY  
BRICKELL  
THE RESIDENCES

2 BEDROOMS | 2 BATHROOMS | LEVELS 15 TO 42

INTERIOR	1,286 SQ. FT.	119.47 SQ. MTS.
EXTERIOR	161 SQ. FT.	15 SQ. MTS.



Sales: Fortune Development Sales & Related Realty

The dimensions stated for this floor plan are approximate because there are various recognized methods for calculating the square footage of a unit. The square footage stated here is calculated from the exterior boundaries of the exterior walls to the centerline of interior demising walls without deductions for cutouts, curves, or architectural features. This method typically results in quoted dimensions greater than the dimensions that would be determined by using other accepted methods. The definition of "Unit" and the calculation method to be relied upon is set forth by 444 BRICKELL TWO, LLC (the "Developer") in Developer's prospectus which method may result in a square footage calculation less than the result of the calculation method used here. VICEROY BRANDS, LLC owns the mark and name Viceroy®. The Developer is permitted to use the name and logo of The Related Group® and Viceroy® pursuant to license agreements which are valid unless terminated or expired; neither The Related Group nor Viceroy Brands, LLC are the Developer. Consult the Developer's prospectus to learn what is included with Unit purchase and to understand Unit dimensions. 2024 © 444 BRICKELL TWO, LLC with all rights reserved.

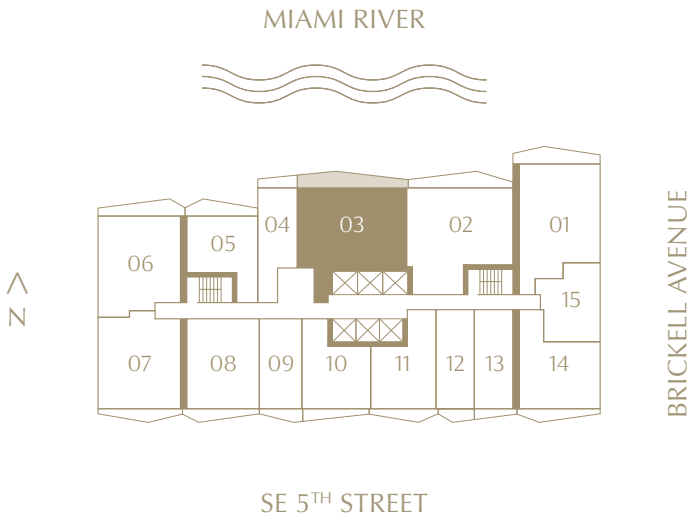


# Residence 03

VICEROY  
BRICKELL  
THE RESIDENCES

2 BEDROOMS | 2 BATHROOMS | LEVELS 15 TO 42

INTERIOR	1,235 SQ. FT.	114.74 SQ. MTS.
EXTERIOR	187 SQ. FT.	17 SQ. MTS.



Sales: Fortune Development Sales & Related Realty

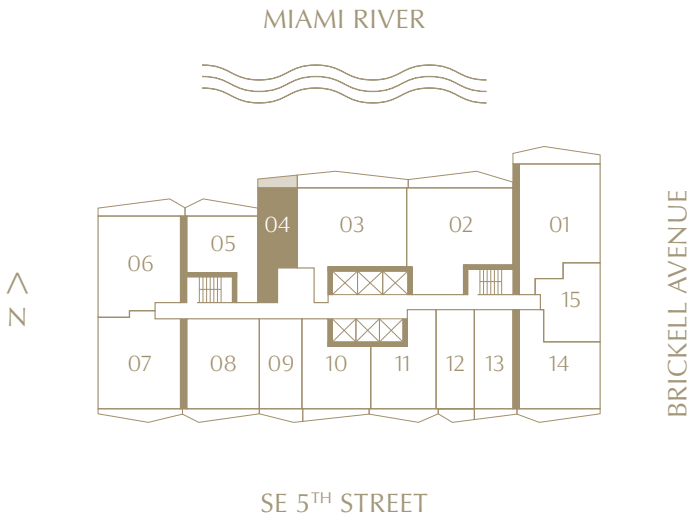
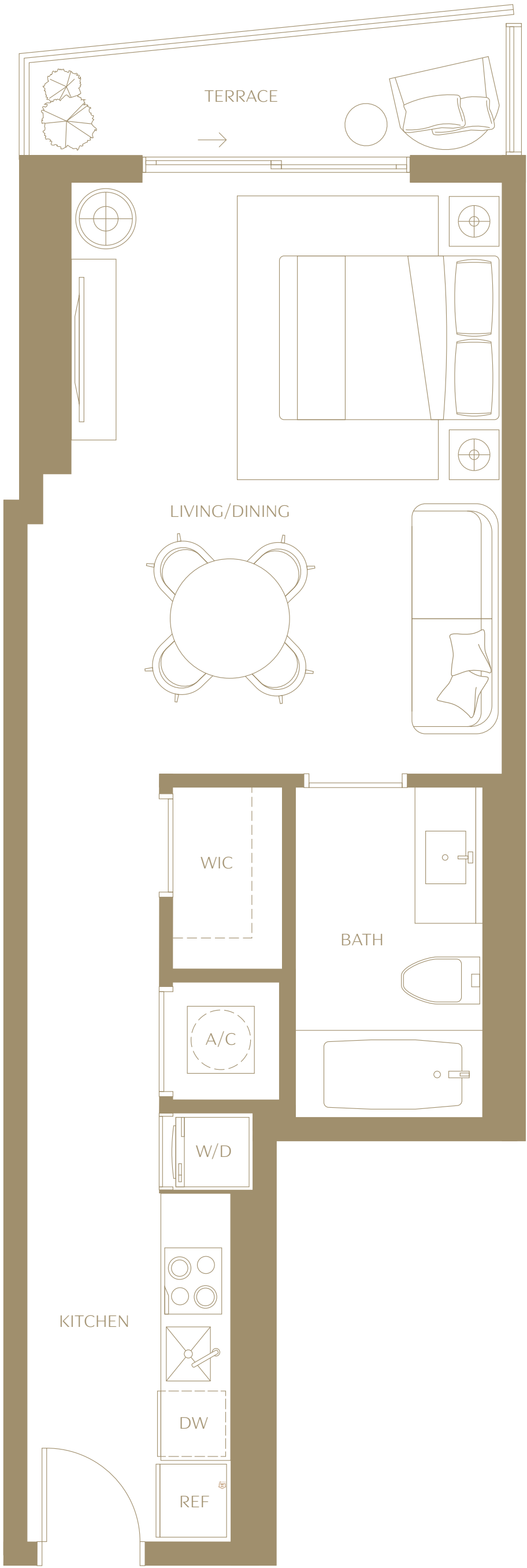
ⓘ The dimensions stated for this floor plan are approximate because there are various recognized methods for calculating the square footage of a unit. The square footage stated here is calculated from the exterior boundaries of the exterior walls to the centerline of interior demising walls without deductions for cutouts, curves, or architectural features. This method typically results in quoted dimensions greater than the dimensions that would be determined by using other accepted methods. The definition of "Unit" and the calculation method to be relied upon is set forth by 444 BRICKELL TWO, LLC (the "Developer") in Developer's prospectus which method may result in a square footage calculation less than the result of the calculation method used here. VICEROY BRANDS, LLC owns the mark and name ViceroY®. The Developer is permitted to use the name and logo of The Related Group® and ViceroY® pursuant to license agreements which are valid unless terminated or expired; neither The Related Group nor ViceroY Brands, LLC are the Developer. Consult the Developer's prospectus to learn what is included with Unit purchase and to understand Unit dimensions. 2024 © 444 BRICKELL TWO, LLC with all rights reserved.

# Residence 04

STUDIO | 1 BATHROOM | LEVELS 15 TO 42

INTERIOR	519 SQ. FT.	48.22 SQ. MTS.
EXTERIOR	57 SQ. FT.	5 SQ. MTS.

VICEROY  
BRICKELL  
THE RESIDENCES



Sales: Fortune Development Sales & Related Realty

The dimensions stated for this floor plan are approximate because there are various recognized methods for calculating the square footage of a unit. The square footage stated here is calculated from the exterior boundaries of the exterior walls to the centerline of interior demising walls without deductions for cutouts, curves, or architectural features. This method typically results in quoted dimensions greater than the dimensions that would be determined by using other accepted methods. The definition of "Unit" and the calculation method to be relied upon is set forth by 444 BRICKELL TWO, LLC (the "Developer") in Developer's prospectus which method may result in a square footage calculation less than the result of the calculation method used here. VICEROY BRANDS, LLC owns the mark and name Viceroy®. The Developer is permitted to use the name and logo of The Related Group® and Viceroy® pursuant to license agreements which are valid unless terminated or expired; neither The Related Group nor Viceroy Brands, LLC are the Developer. Consult the Developer's prospectus to learn what is included with Unit purchase and to understand Unit dimensions. 2024 © 444 BRICKELL TWO, LLC with all rights reserved.

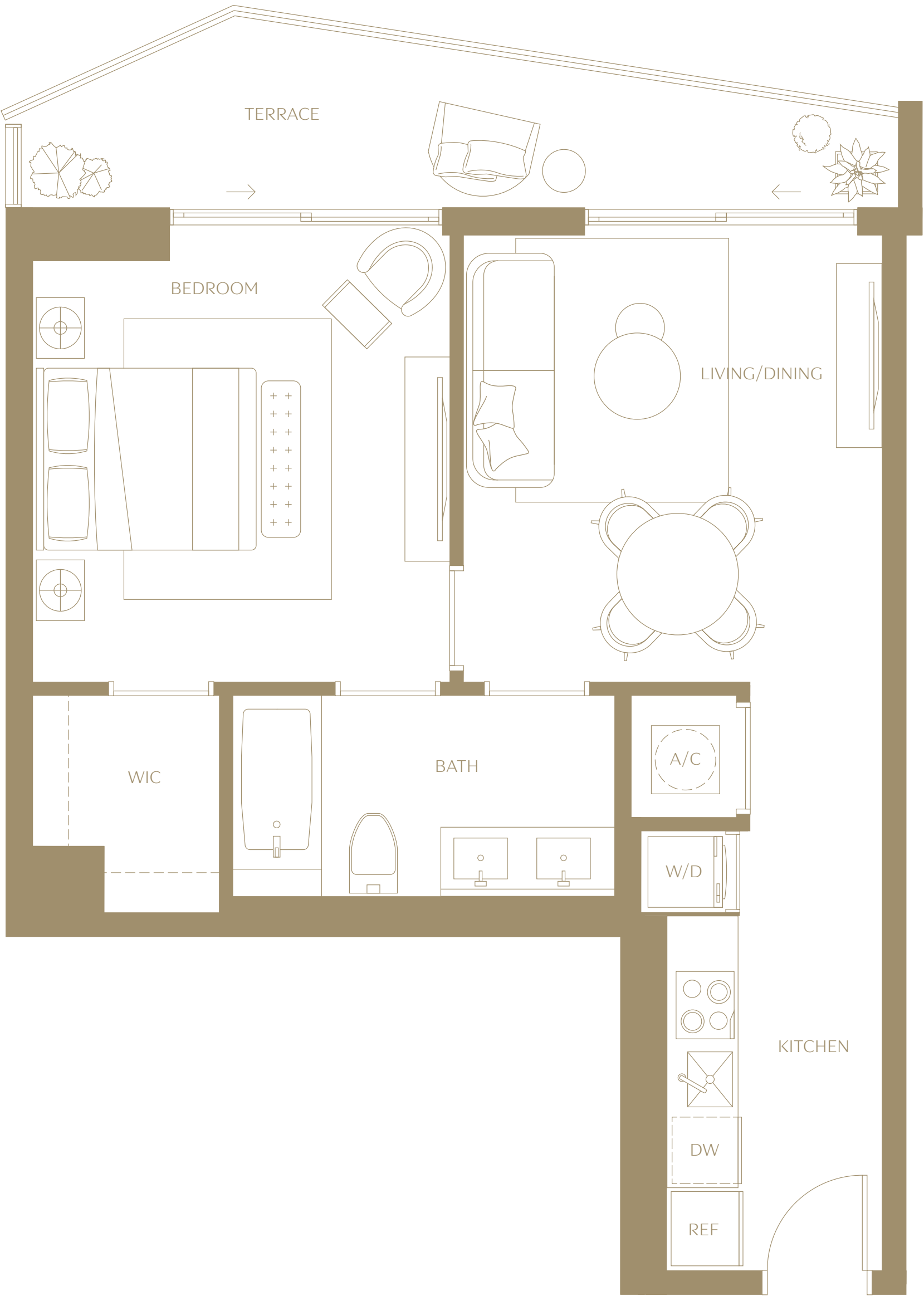


# Residence 05

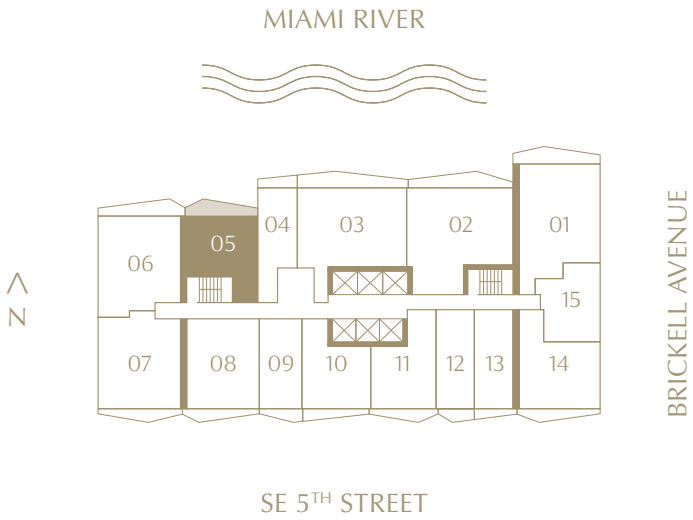
VICEROY  
BRICKELL  
THE RESIDENCES

1 BEDROOM | 1 BATHROOM | LEVELS 15 TO 42

INTERIOR	670 SQ. FT.	62.25 SQ. MTS.
EXTERIOR	117 SQ. FT.	11 SQ. MTS.



05



Sales: Fortune Development Sales & Related Realty

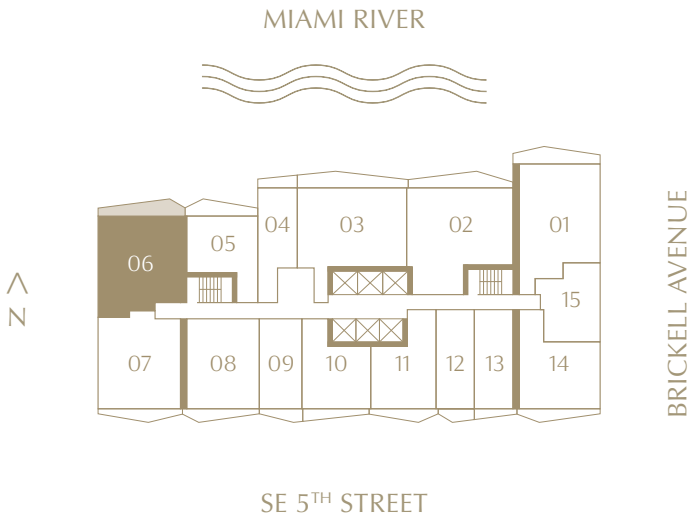
ⓘ The dimensions stated for this floor plan are approximate because there are various recognized methods for calculating the square footage of a unit. The square footage stated here is calculated from the exterior boundaries of the exterior walls to the centerline of interior demising walls without deductions for cutouts, curves, or architectural features. This method typically results in quoted dimensions greater than the dimensions that would be determined by using other accepted methods. The definition of "Unit" and the calculation method to be relied upon is set forth by 444 BRICKELL TWO, LLC (the "Developer") in Developer's prospectus which method may result in a square footage calculation less than the result of the calculation method used here. VICEROY BRANDS, LLC owns the mark and name ViceroY®. The Developer is permitted to use the name and logo of The Related Group® and ViceroY® pursuant to license agreements which are valid unless terminated or expired; neither The Related Group nor ViceroY Brands, LLC are the Developer. Consult the Developer's prospectus to learn what is included with Unit purchase and to understand Unit dimensions. 2024 © 444 BRICKELL TWO, LLC with all rights reserved.

# Residence 06

VICEROY  
BRICKELL  
THE RESIDENCES

2 BEDROOMS | 2 BATHROOMS | LEVELS 15 TO 42

INTERIOR	1,041 SQ. FT.	96.71 SQ. MTS.
EXTERIOR	138 SQ. FT.	13 SQ. MTS.



Sales: Fortune Development Sales & Related Realty

The dimensions stated for this floor plan are approximate because there are various recognized methods for calculating the square footage of a unit. The square footage stated here is calculated from the exterior boundaries of the exterior walls to the centerline of interior demising walls without deductions for cutouts, curves, or architectural features. This method typically results in quoted dimensions greater than the dimensions that would be determined by using other accepted methods. The definition of "Unit" and the calculation method to be relied upon is set forth by 444 BRICKELL TWO, LLC (the "Developer") in Developer's prospectus which method may result in a square footage calculation less than the result of the calculation method used here. VICEROY BRANDS, LLC owns the mark and name Viceroy®. The Developer is permitted to use the name and logo of The Related Group® and Viceroy® pursuant to license agreements which are valid unless terminated or expired; neither The Related Group nor Viceroy Brands, LLC are the Developer. Consult the Developer's prospectus to learn what is included with Unit purchase and to understand Unit dimensions. 2024 © 444 BRICKELL TWO, LLC with all rights reserved.

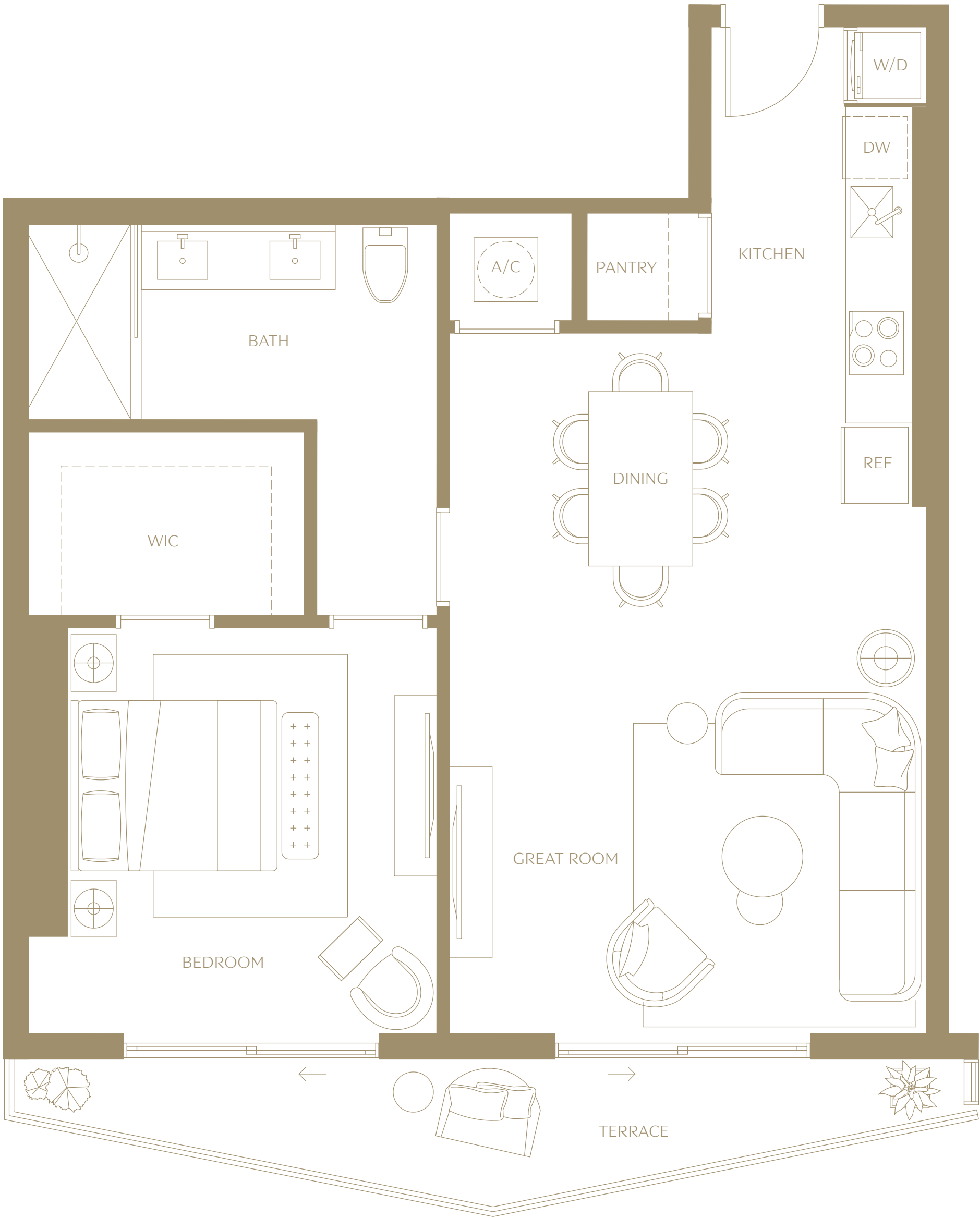


# Residence 07

2 BEDROOMS | 2 BATHROOMS | LEVELS 15 TO 42

INTERIOR	1,030 SQ. FT.	95.69 SQ. MTS.
EXTERIOR	104 SQ. FT.	10 SQ. MTS.

VICEROY  
BRICKELL  
THE RESIDENCES



5



Sales: Fortune Development Sales & Related Realty

The dimensions stated for this floor plan are approximate because there are various recognized methods for calculating the square footage of a unit. The square footage stated here is calculated from the exterior boundaries of the exterior walls to the centerline of interior demising walls without deductions for cutouts, curves, or architectural features. This method typically results in quoted dimensions greater than the dimensions that would be determined by using other accepted methods. The definition of "Unit" and the calculation method to be relied upon is set forth by 444 BRICKELL TWO, LLC (the "Developer") in Developer's prospectus which method may result in a square footage calculation less than the result of the calculation method used here. VICEROY BRANDS, LLC owns the mark and name Viceroy®. The Developer is permitted to use the name and logo of The Related Group® and Viceroy® pursuant to license agreements which are valid unless terminated or expired; neither The Related Group nor Viceroy Brands, LLC are the Developer. Consult the Developer's prospectus to learn what is included with Unit purchase and to understand Unit dimensions. 2024 © 444 BRICKELL TWO, LLC with all rights reserved.

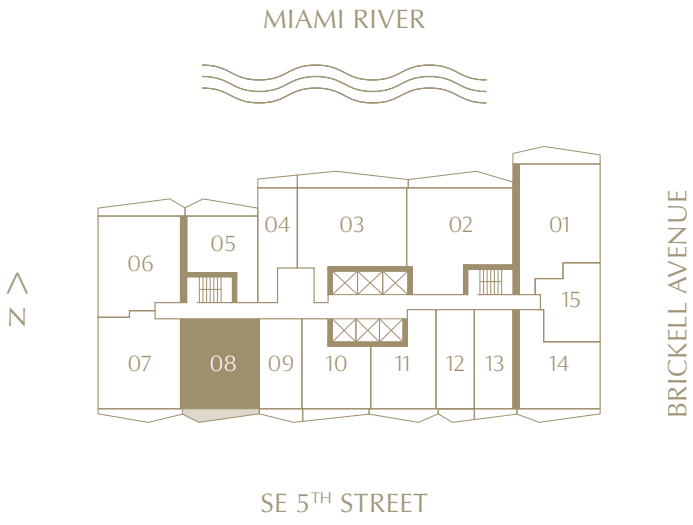
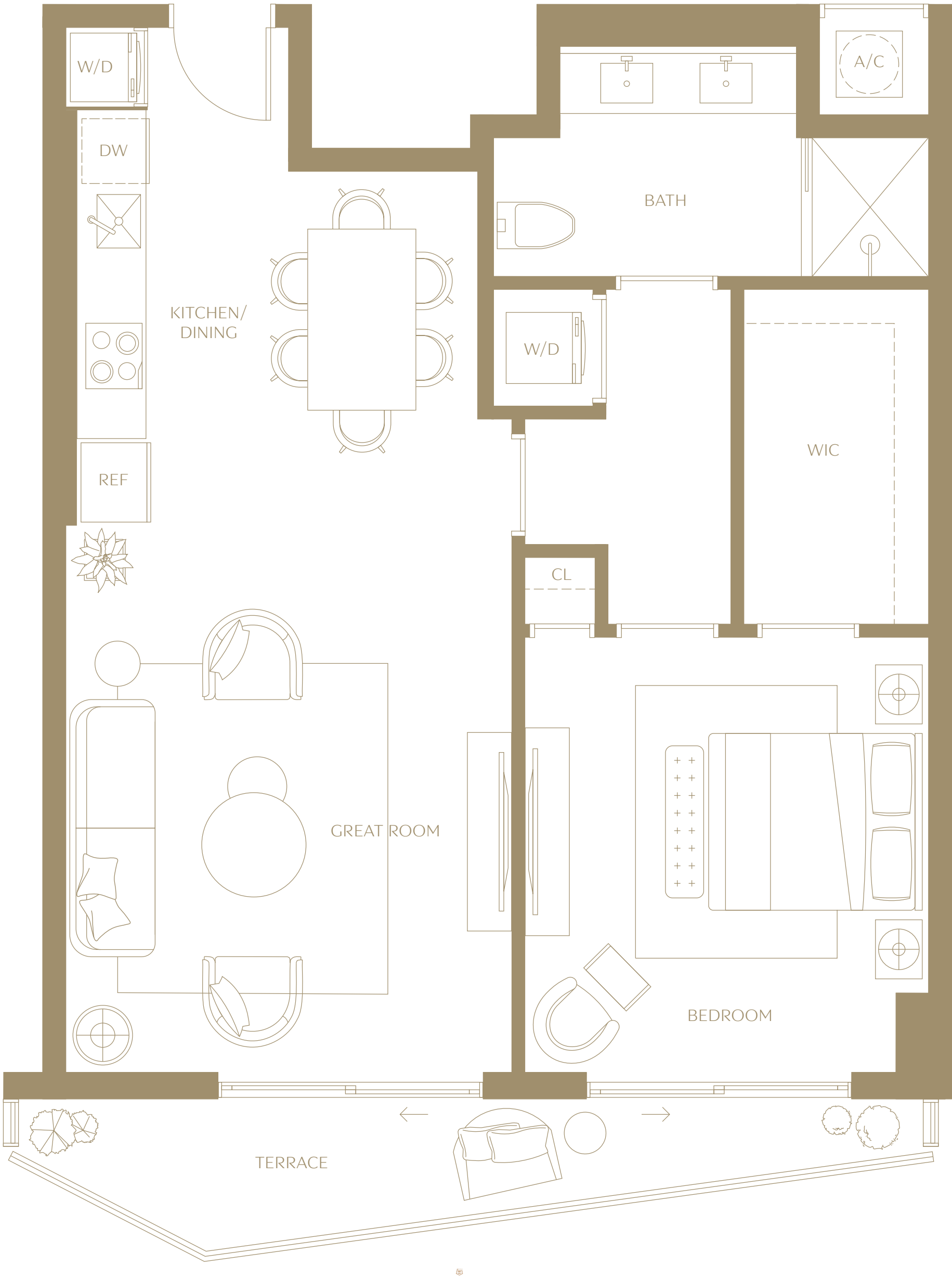
# Residence 08

# VICEROY BRICKELL

THE RESIDENCES

1 BEDROOM | 1 BATHROOM | LEVELS 15 TO 42

INTERIOR	862 SQ. FT.	80.08 SQ. MTS.
EXTERIOR	96 SQ. FT.	9 SQ. MTS.



Sales: Fortune Development Sales & Related Realty

The dimensions stated for this floor plan are approximate because there are various recognized methods for calculating the square footage of a unit. The square footage stated here is calculated from the exterior boundaries of the exterior walls to the centerline of interior demising walls without deductions for cutouts, curves, or architectural features. This method typically results in quoted dimensions greater than the dimensions that would be determined by using other accepted methods. The definition of "Unit" and the calculation method to be relied upon is set forth by 444 BRICKELL TWO, LLC (the "Developer") in Developer's prospectus which method may result in a square footage calculation less than the result of the calculation method used here. VICEROY BRANDS, LLC owns the mark and name Viceroy®. The Developer is permitted to use the name and logo of The Related Group® and Viceroy® pursuant to license agreements which are valid unless terminated or expired; neither The Related Group nor Viceroy Brands, LLC are the Developer. Consult the Developer's prospectus to learn what is included with Unit purchase and to understand Unit dimensions. 2024 © 444 BRICKELL TWO, LLC with all rights reserved.



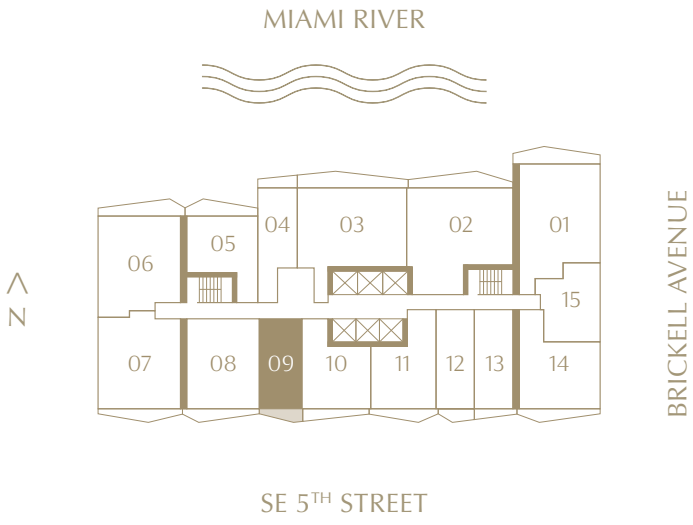
# Residence 09

STUDIO | 1 BATHROOM | LEVELS 15 TO 42

INTERIOR	485 SQ. FT.	45.06 SQ. MTS.
EXTERIOR	57 SQ. FT.	5 SQ. MTS.

## VICEROY BRICKELL

THE RESIDENCES



Sales: Fortune Development Sales & Related Realty

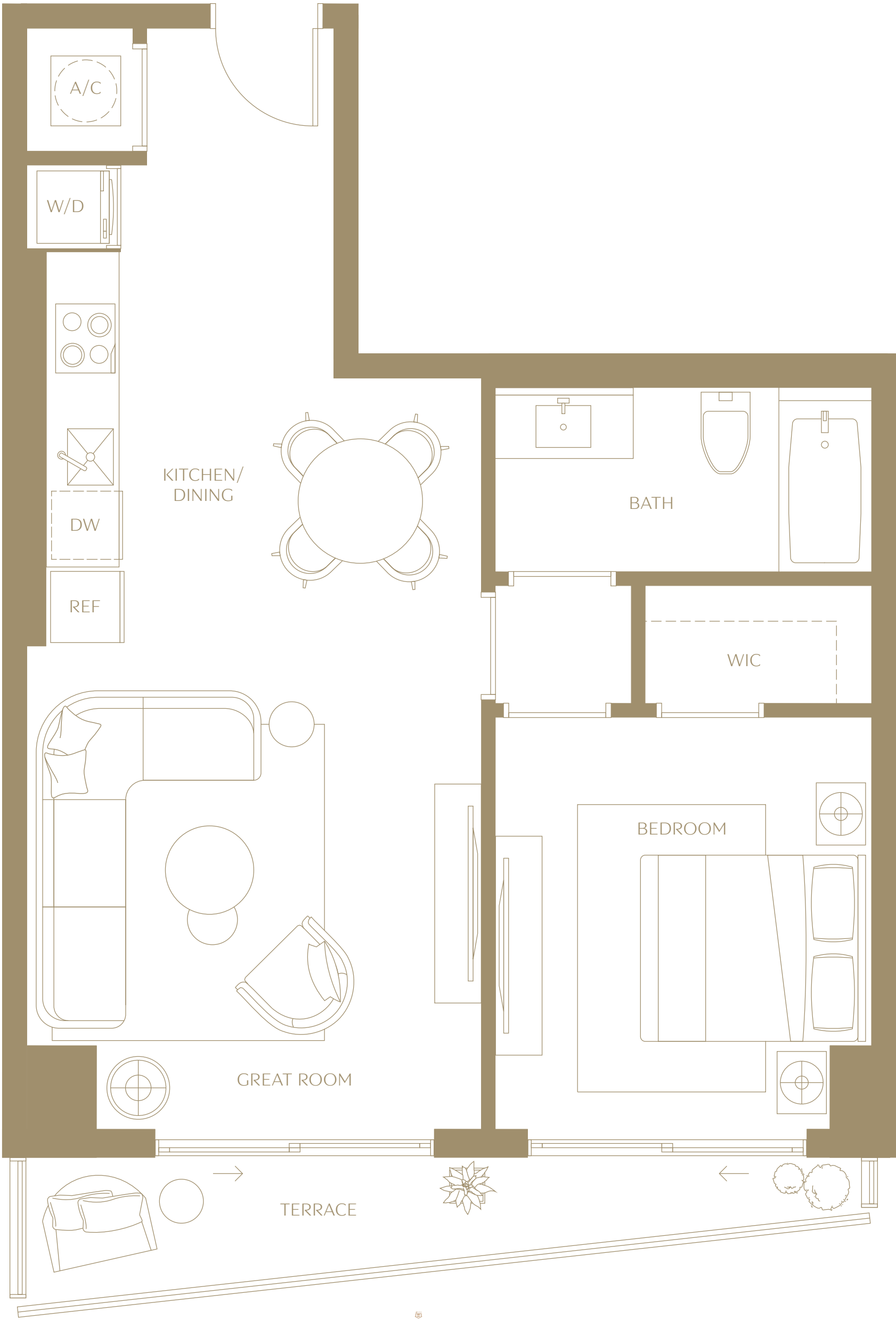
The dimensions stated for this floor plan are approximate because there are various recognized methods for calculating the square footage of a unit. The square footage stated here is calculated from the exterior boundaries of the exterior walls to the centerline of interior demising walls without deductions for cutouts, curves, or architectural features. This method typically results in quoted dimensions greater than the dimensions that would be determined by using other accepted methods. The definition of "Unit" and the calculation method to be relied upon is set forth by 444 BRICKELL TWO, LLC (the "Developer") in Developer's prospectus which method may result in a square footage calculation less than the result of the calculation method used here. VICEROY BRANDS, LLC owns the mark and name Viceroy®. The Developer is permitted to use the name and logo of The Related Group® and Viceroy® pursuant to license agreements which are valid unless terminated or expired; neither The Related Group nor Viceroy Brands, LLC are the Developer. Consult the Developer's prospectus to learn what is included with Unit purchase and to understand Unit dimensions. 2024 © 444 BRICKELL TWO, LLC with all rights reserved.

# Residence 10

1 BEDROOM | 1 BATHROOM | LEVELS 15 TO 42

INTERIOR	686 SQ. FT.	63.73 SQ. MTS.
EXTERIOR	78 SQ. FT.	7 SQ. MTS.

VICEROY  
BRICKELL  
THE RESIDENCES



Sales: Fortune Development Sales & Related Realty

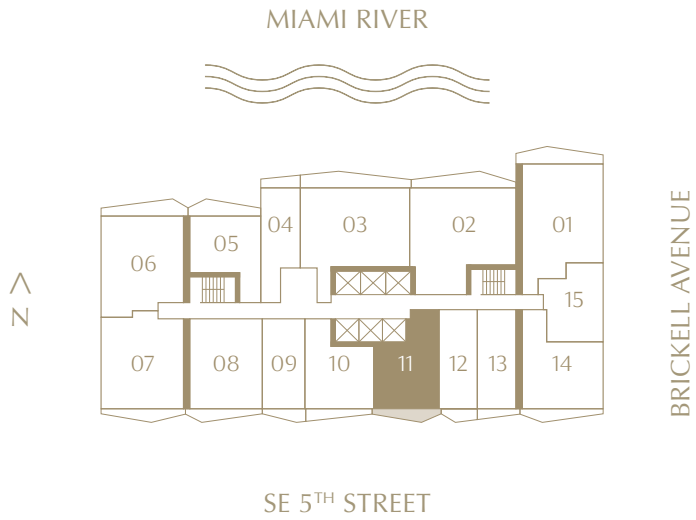
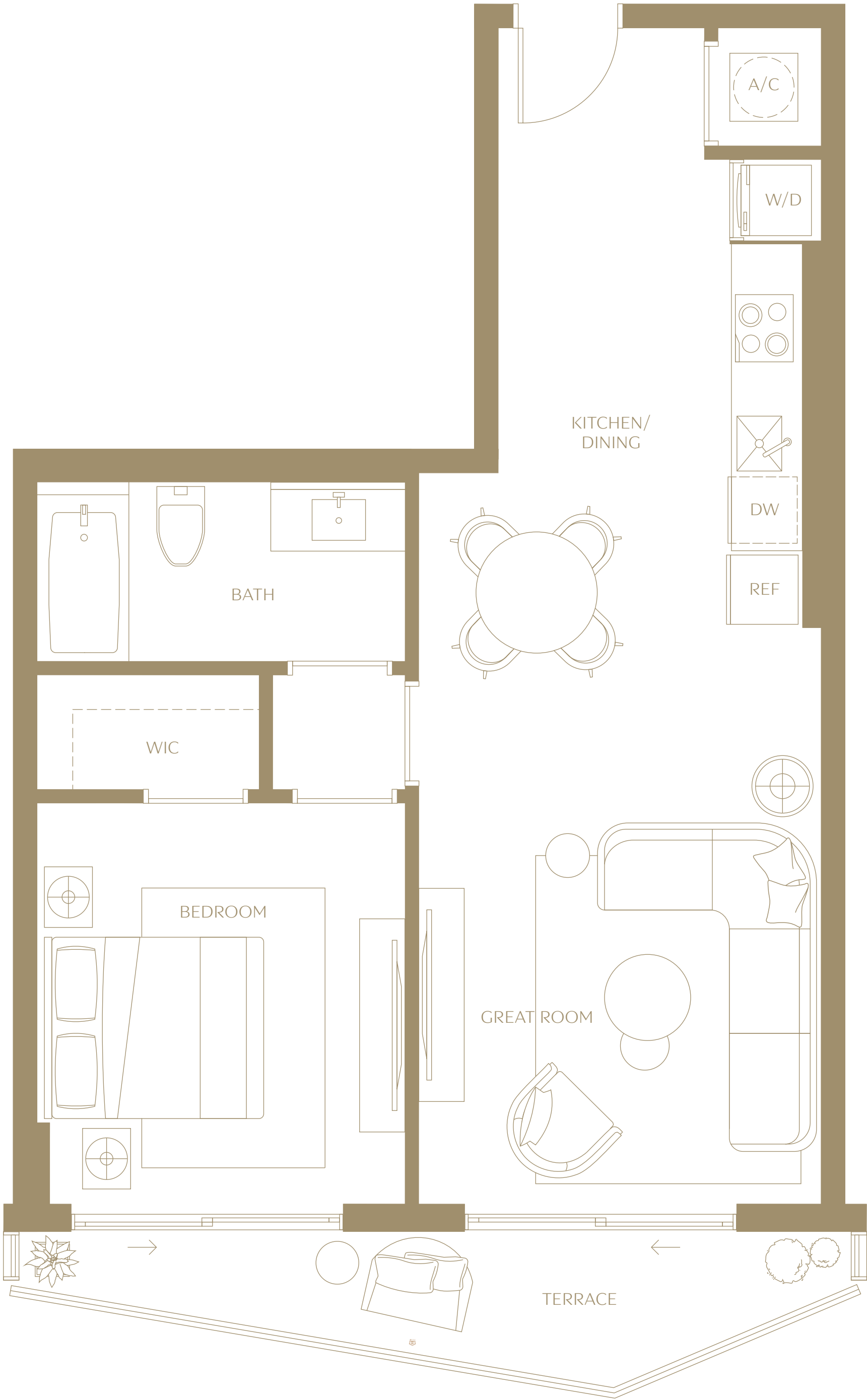
ⓘ The dimensions stated for this floor plan are approximate because there are various recognized methods for calculating the square footage of a unit. The square footage stated here is calculated from the exterior boundaries of the exterior walls to the centerline of interior demising walls without deductions for cutouts, curves, or architectural features. This method typically results in quoted dimensions greater than the dimensions that would be determined by using other accepted methods. The definition of "Unit" and the calculation method to be relied upon is set forth by 444 BRICKELL TWO, LLC (the "Developer") in Developer's prospectus which method may result in a square footage calculation less than the result of the calculation method used here. VICEROY BRANDS, LLC owns the mark and name Viceroy®. The Developer is permitted to use the name and logo of The Related Group® and Viceroy® pursuant to license agreements which are valid unless terminated or expired; neither The Related Group nor Viceroy Brands, LLC are the Developer. Consult the Developer's prospectus to learn what is included with Unit purchase and to understand Unit dimensions. 2024 © 444 BRICKELL TWO, LLC with all rights reserved.

# Residence 11

1 BEDROOM | 1 BATHROOM | LEVELS 15 TO 42

INTERIOR	699 SQ. FT.	64.94 SQ. MTS.
EXTERIOR	85 SQ. FT.	8 SQ. MTS.

VICEROY  
BRICKELL  
THE RESIDENCES



Sales: Fortune Development Sales & Related Realty

The dimensions stated for this floor plan are approximate because there are various recognized methods for calculating the square footage of a unit. The square footage stated here is calculated from the exterior boundaries of the exterior walls to the centerline of interior demising walls without deductions for cutouts, curves, or architectural features. This method typically results in quoted dimensions greater than the dimensions that would be determined by using other accepted methods. The definition of "Unit" and the calculation method to be relied upon is set forth by 444 BRICKELL TWO, LLC (the "Developer") in Developer's prospectus which method may result in a square footage calculation less than the result of the calculation method used here. VICEROY BRANDS, LLC owns the mark and name Viceroy®. The Developer is permitted to use the name and logo of The Related Group® and Viceroy® pursuant to license agreements which are valid unless terminated or expired; neither The Related Group nor Viceroy Brands, LLC are the Developer. Consult the Developer's prospectus to learn what is included with Unit purchase and to understand Unit dimensions. 2024 © 444 BRICKELL TWO, LLC with all rights reserved.

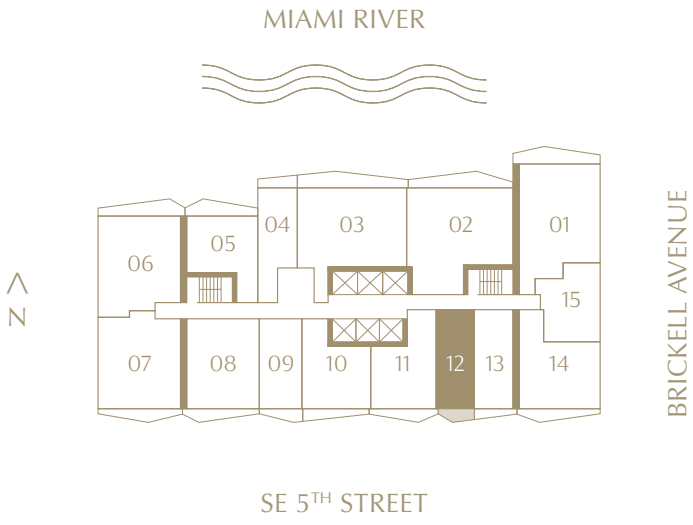
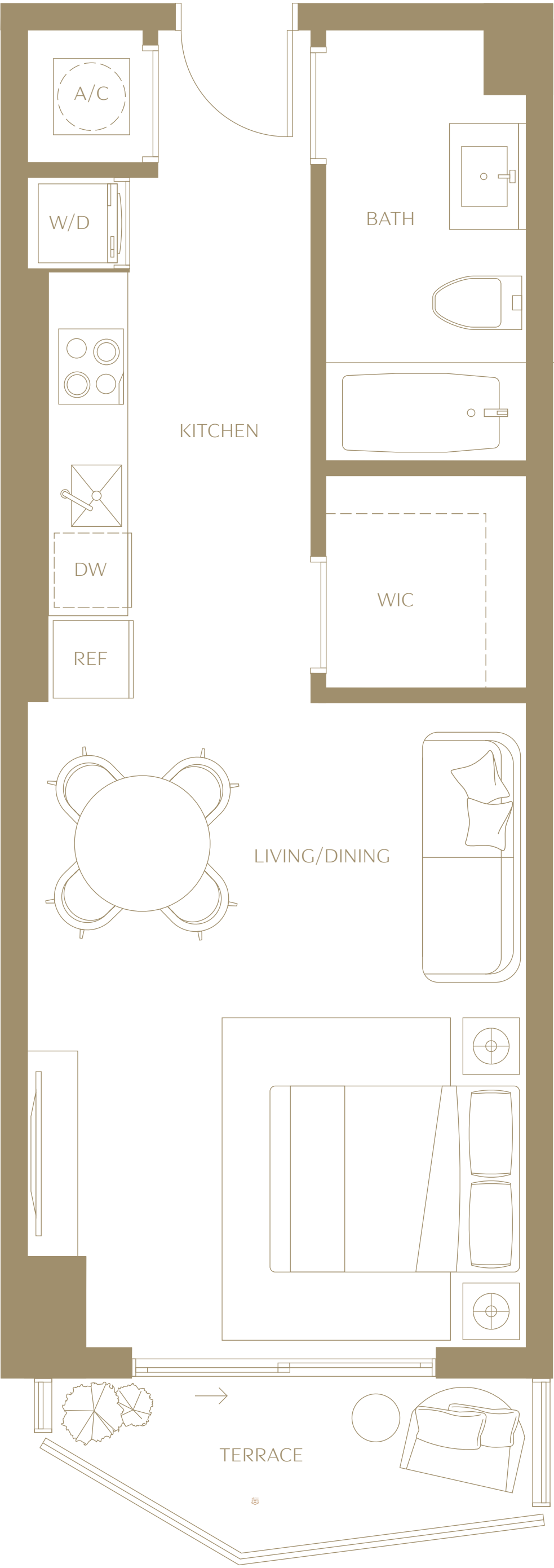


# Residence 12

STUDIO | 1 BATHROOM | LEVELS 15 TO 42

INTERIOR	489 SQ. FT.	45.43 SQ. MTS.
EXTERIOR	53 SQ. FT.	5 SQ. MTS.

## VICEROY BRICKELL THE RESIDENCES



Sales: Fortune Development Sales & Related Realty

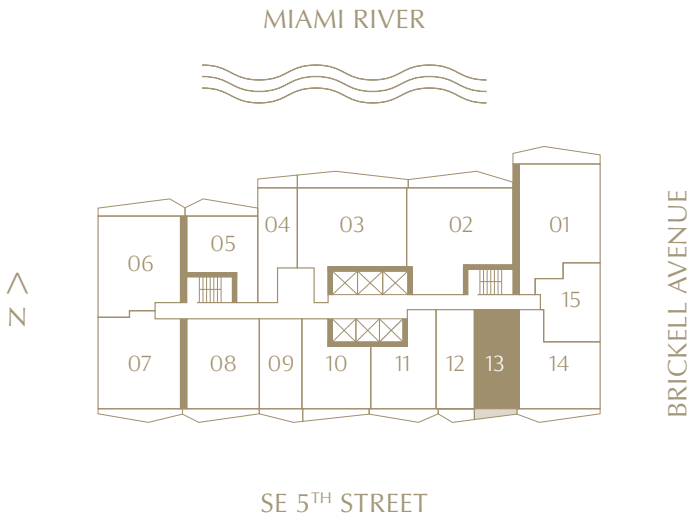
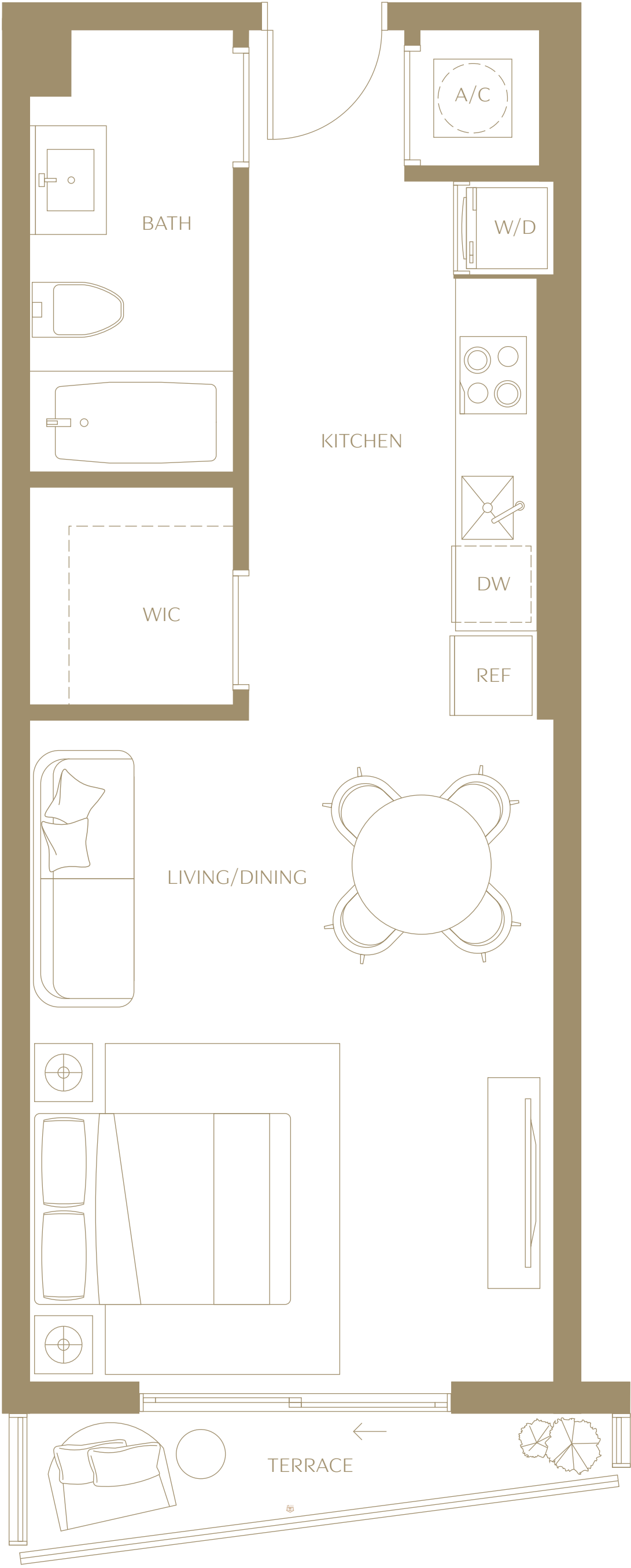
The dimensions stated for this floor plan are approximate because there are various recognized methods for calculating the square footage of a unit. The square footage stated here is calculated from the exterior boundaries of the exterior walls to the centerline of interior demising walls without deductions for cutouts, curves, or architectural features. This method typically results in quoted dimensions greater than the dimensions that would be determined by using other accepted methods. The definition of "Unit" and the calculation method to be relied upon is set forth by 444 BRICKELL TWO, LLC (the "Developer") in Developer's prospectus which method may result in a square footage calculation less than the result of the calculation method used here. VICEROY BRANDS, LLC owns the mark and name Viceroy®. The Developer is permitted to use the name and logo of The Related Group® and Viceroy® pursuant to license agreements which are valid unless terminated or expired; neither The Related Group nor Viceroy Brands, LLC are the Developer. Consult the Developer's prospectus to learn what is included with Unit purchase and to understand Unit dimensions. 2024 © 444 BRICKELL TWO, LLC with all rights reserved.

# Residence 13

VICEROY  
BRICKELL  
THE RESIDENCES

STUDIO | 1 BATHROOM | LEVELS 15 TO 42

INTERIOR	539 SQ. FT.	50.07 SQ. MTS.
EXTERIOR	45 SQ. FT.	4 SQ. MTS.



Sales: Fortune Development Sales & Related Realty

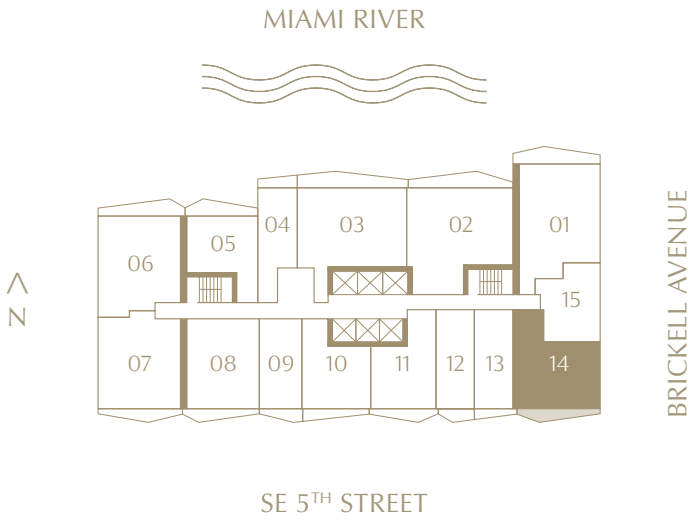
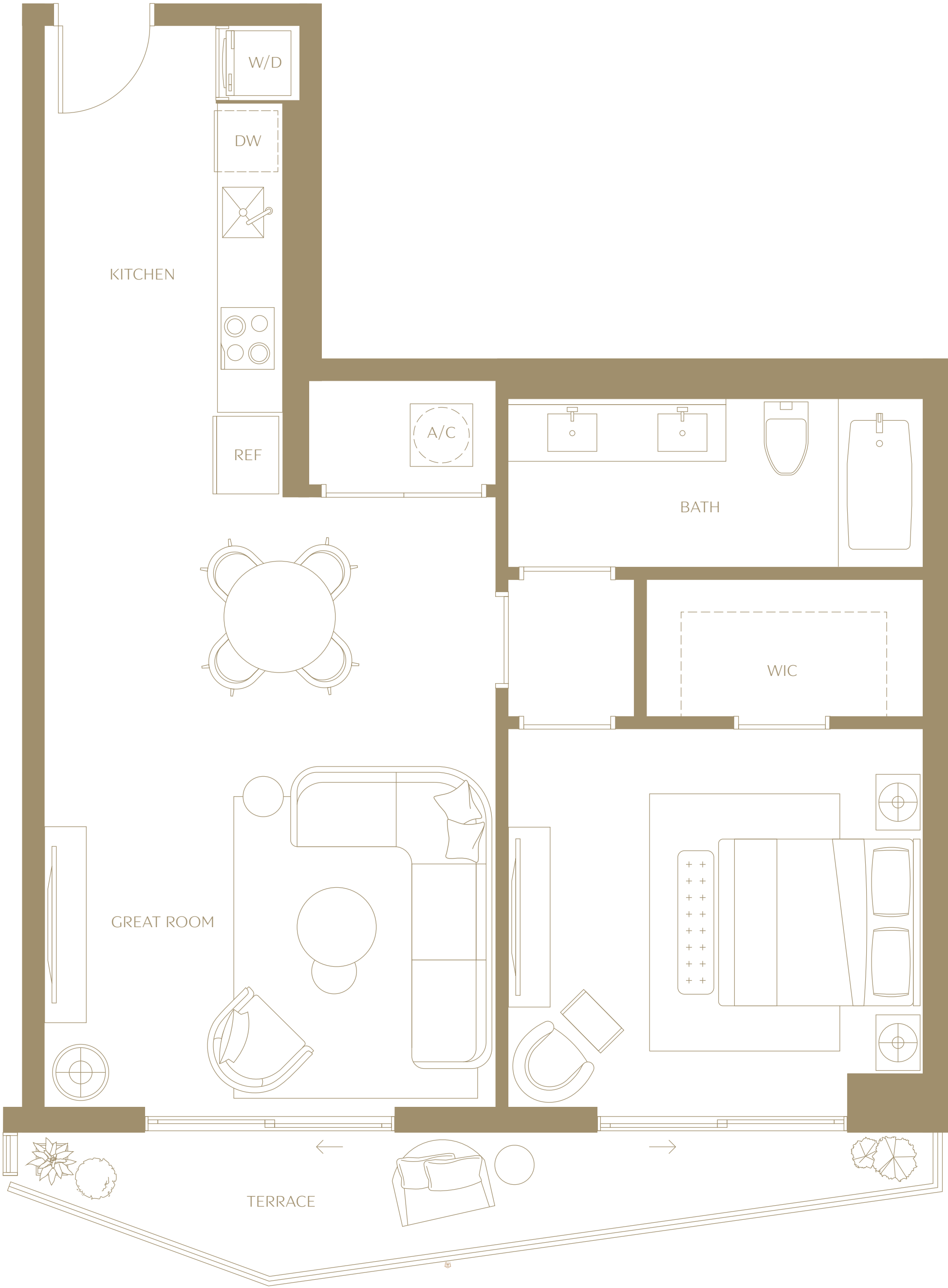
The dimensions stated for this floor plan are approximate because there are various recognized methods for calculating the square footage of a unit. The square footage stated here is calculated from the exterior boundaries of the exterior walls to the centerline of interior demising walls without deductions for cutouts, curves, or architectural features. This method typically results in quoted dimensions greater than the dimensions that would be determined by using other accepted methods. The definition of "Unit" and the calculation method to be relied upon is set forth by 444 BRICKELL TWO, LLC (the "Developer") in Developer's prospectus which method may result in a square footage calculation less than the result of the calculation method used here. VICEROY BRANDS, LLC owns the mark and name Viceroy®. The Developer is permitted to use the name and logo of The Related Group® and Viceroy® pursuant to license agreements which are valid unless terminated or expired; neither The Related Group nor Viceroy Brands, LLC are the Developer. Consult the Developer's prospectus to learn what is included with Unit purchase and to understand Unit dimensions. 2024 © 444 BRICKELL TWO, LLC with all rights reserved.

# Residence 14

VICEROY  
BRICKELL  
THE RESIDENCES

1 BEDROOM | 1 BATHROOM | LEVELS 15 TO 42

INTERIOR	833 SQ. FT.	77.39 SQ. MTS.
EXTERIOR	102 SQ. FT.	9 SQ. MTS.



Sales: Fortune Development Sales & Related Realty

The dimensions stated for this floor plan are approximate because there are various recognized methods for calculating the square footage of a unit. The square footage stated here is calculated from the exterior boundaries of the exterior walls to the centerline of interior demising walls without deductions for cutouts, curves, or architectural features. This method typically results in quoted dimensions greater than the dimensions that would be determined by using other accepted methods. The definition of "Unit" and the calculation method to be relied upon is set forth by 444 BRICKELL TWO, LLC (the "Developer") in Developer's prospectus which method may result in a square footage calculation less than the result of the calculation method used here. VICEROY BRANDS, LLC owns the mark and name Viceroy®. The Developer is permitted to use the name and logo of The Related Group® and Viceroy® pursuant to license agreements which are valid unless terminated or expired; neither The Related Group nor Viceroy Brands, LLC are the Developer. Consult the Developer's prospectus to learn what is included with Unit purchase and to understand Unit dimensions. 2024 © 444 BRICKELL TWO, LLC with all rights reserved.

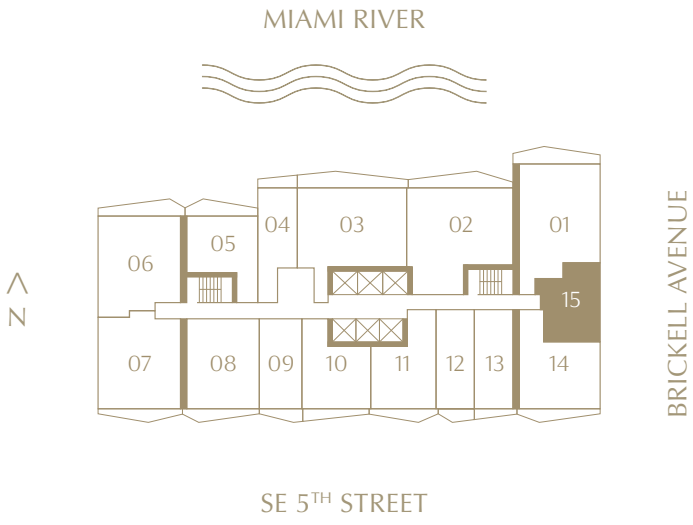
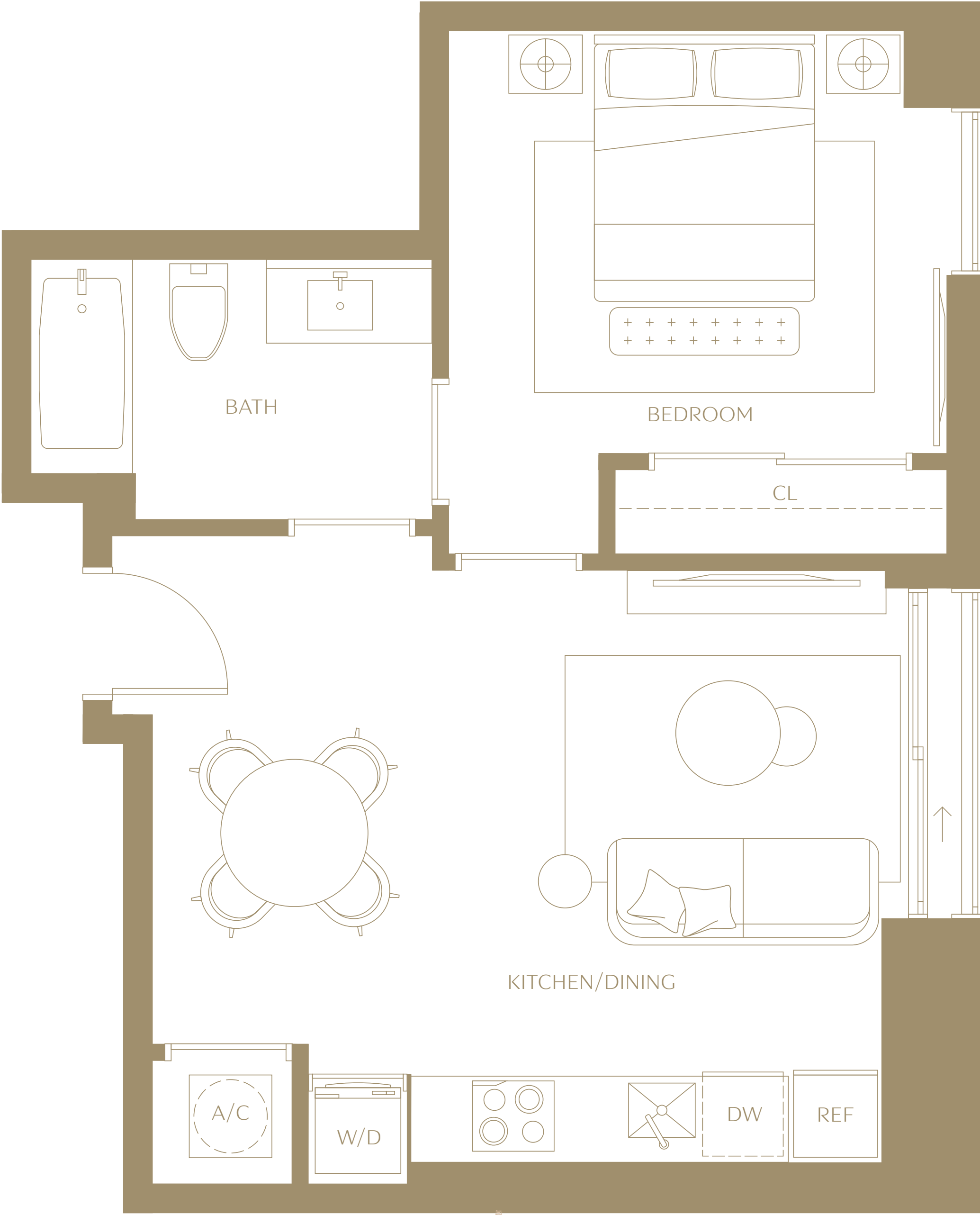


Residence 15

1 BEDROOM | 1 BATHROOM | LEVELS 15 TO 42

INTERIOR511 SQ. FT.51.19 SQ. MTS.

VICEROY  
BRICKELL  
THE RESIDENCES



Sales: Fortune Development Sales & Related Realty

The dimensions stated for this floor plan are approximate because there are various recognized methods for calculating the square footage of a unit. The square footage stated here is calculated from the exterior boundaries of the exterior walls to the centerline of interior demising walls without deductions for cutouts, curves, or architectural features. This method typically results in quoted dimensions greater than the dimensions that would be determined by using other accepted methods. The definition of "Unit" and the calculation method to be relied upon is set forth by 444 BRICKELL TWO, LLC (the "Developer") in Developer's prospectus which method may result in a square footage calculation less than the result of the calculation method used here. VICEROY BRANDS, LLC owns the mark and name Viceroy®. The Developer is permitted to use the name and logo of The Related Group® and Viceroy® pursuant to license agreements which are valid unless terminated or expired; neither The Related Group nor Viceroy Brands, LLC are the Developer. Consult the Developer's prospectus to learn what is included with Unit purchase and to understand Unit dimensions. 2024 © 444 BRICKELL TWO, LLC with all rights reserved.

# VICEROY BRICKELL

## THE RESIDENCES

PENTHOUSE FLOOR PLANS

Penthouse 01

VICEROY BRICKELL  
THE RESIDENCES

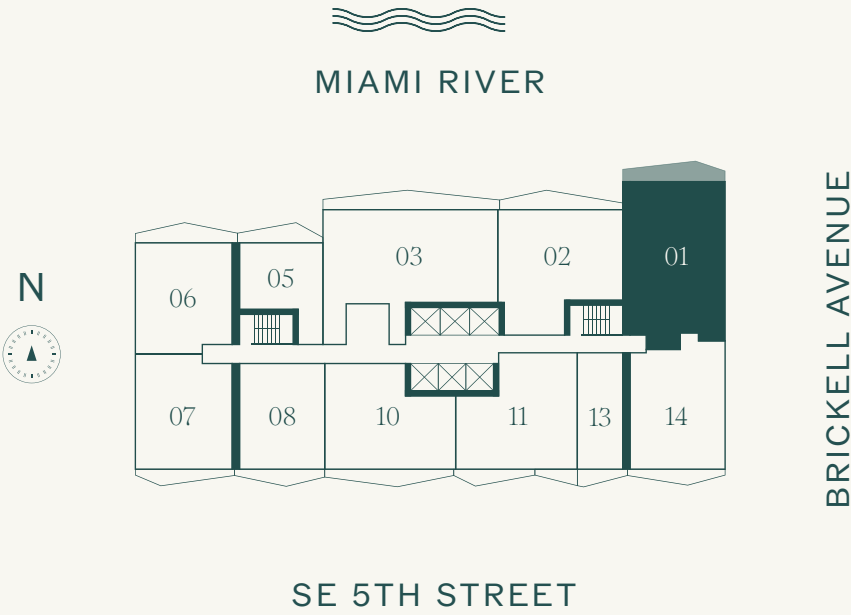
LEVEL 43  
NORTH EAST EXPOSURE

3 BEDROOMS  
3 BATHROOMS

INTERIOR  
1,481 SF | 137.59 M<sup>2</sup>

TERRACE  
141 SF | 13.09 M<sup>2</sup>

TOTAL  
1,622 SF | 150.68 M<sup>2</sup>



ⓘ The dimensions stated for this floor plan are approximate because there are various recognized methods for calculating the square footage of a unit. The square footage stated here is calculated from the exterior boundaries of the exterior walls to the centerline of interior demising walls without deductions for cutouts, curves, or architectural features. This method typically results in quoted dimensions greater than the dimensions that would be determined by using other accepted methods. The definition of "Unit" and the calculation method to be relied upon is set forth by 444 BRICKELL TWO, LLC (the "Developer") in Developer's prospectus which method may result in a square footage calculation less than the result of the calculation method used here. VICEROY BRANDS, LLC owns the mark and name Viceroy®. The Developer is permitted to use the name and logo of The Related Group® and Viceroy® pursuant to license agreements which are valid unless terminated or expired; neither The Related Group nor Viceroy Brands, LLC are the Developer. Consult the Developer's prospectus to learn what is included with Unit purchase and to understand Unit dimensions. 2025 © 444 BRICKELL TWO, LLC with all rights reserved.





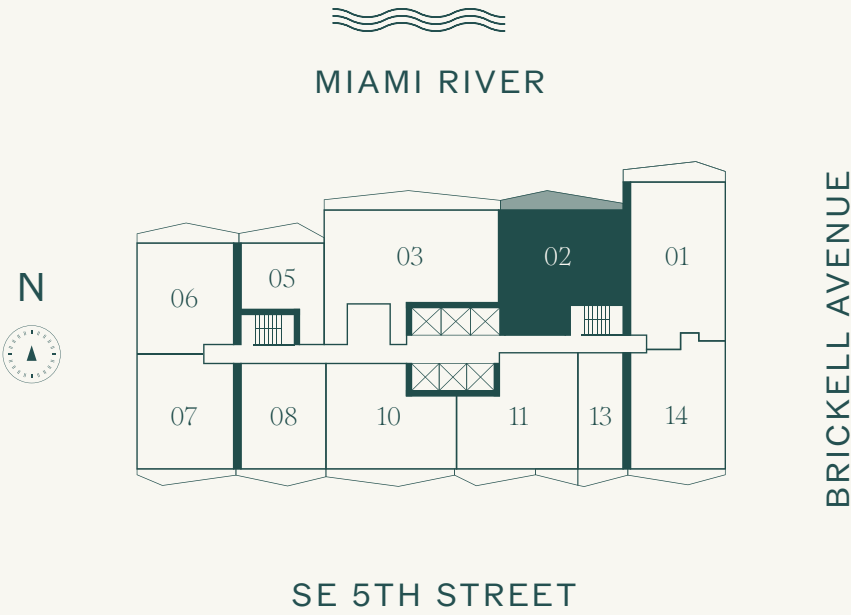
LEVEL 43  
NORTH EXPOSURE

2 BEDROOMS  
2 BATHROOMS

INTERIOR  
1,286 SF | 119.47 M<sup>2</sup>

TERRACE  
162 SF | 15.05 M<sup>2</sup>

TOTAL  
1,448 SF | 134.52 M<sup>2</sup>



ⓘ The dimensions stated for this floor plan are approximate because there are various recognized methods for calculating the square footage of a unit. The square footage stated here is calculated from the exterior boundaries of the exterior walls to the centerline of interior demising walls without deductions for cutouts, curves, or architectural features. This method typically results in quoted dimensions greater than the dimensions that would be determined by using other accepted methods. The definition of "Unit" and the calculation method to be relied upon is set forth by 444 BRICKELL TWO, LLC (the "Developer") in Developer's prospectus which method may result in a square footage calculation less than the result of the calculation method used here. VICEROY BRANDS, LLC owns the mark and name Viceroy®. The Developer is permitted to use the name and logo of The Related Group® and Viceroy® pursuant to license agreements which are valid unless terminated or expired; neither The Related Group nor Viceroy Brands, LLC are the Developer. Consult the Developer's prospectus to learn what is included with Unit purchase and to understand Unit dimensions. 2025 © 444 BRICKELL TWO, LLC with all rights reserved.



Penthouse 03

VICEROY BRICKELL  
THE RESIDENCES



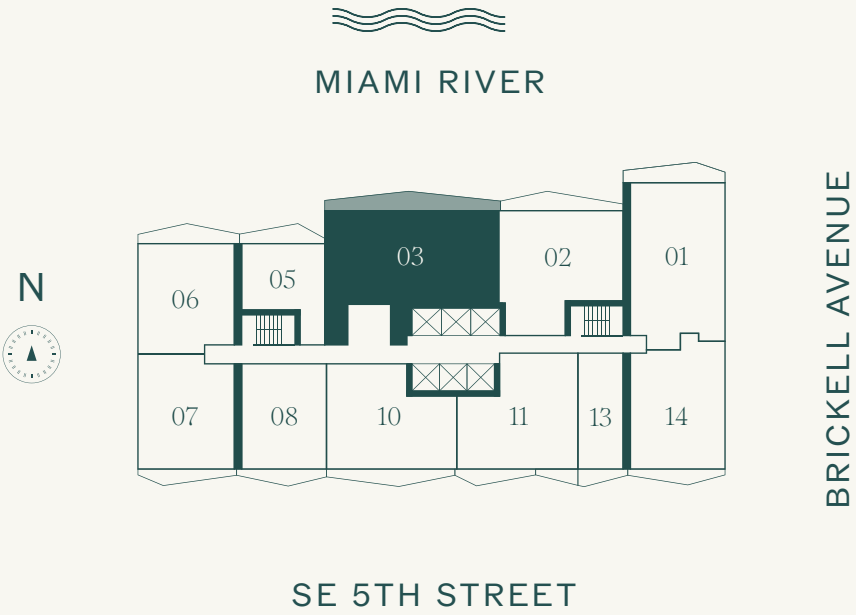
LEVEL 43  
NORTH EXPOSURE

3 BEDROOMS  
3 BATHROOMS

INTERIOR  
1,755 SF | 163.04 M<sup>2</sup>

TERRACE  
244 SF | 22.67 M<sup>2</sup>

TOTAL  
1,999 SF | 185.71 M<sup>2</sup>



ⓘ The dimensions stated for this floor plan are approximate because there are various recognized methods for calculating the square footage of a unit. The square footage stated here is calculated from the exterior boundaries of the exterior walls to the centerline of interior demising walls without deductions for cutouts, curves, or architectural features. This method typically results in quoted dimensions greater than the dimensions that would be determined by using other accepted methods. The definition of "Unit" and the calculation method to be relied upon is set forth by 444 BRICKELL TWO, LLC (the "Developer") in Developer's prospectus which method may result in a square footage calculation less than the result of the calculation method used here. VICEROY BRANDS, LLC owns the mark and name Viceroy®. The Developer is permitted to use the name and logo of The Related Group® and Viceroy® pursuant to license agreements which are valid unless terminated or expired; neither The Related Group nor Viceroy Brands, LLC are the Developer. Consult the Developer's prospectus to learn what is included with Unit purchase and to understand Unit dimensions. 2025 © 444 BRICKELL TWO, LLC with all rights reserved.



Penthouse 05

VICEROY BRICKELL  
THE RESIDENCES

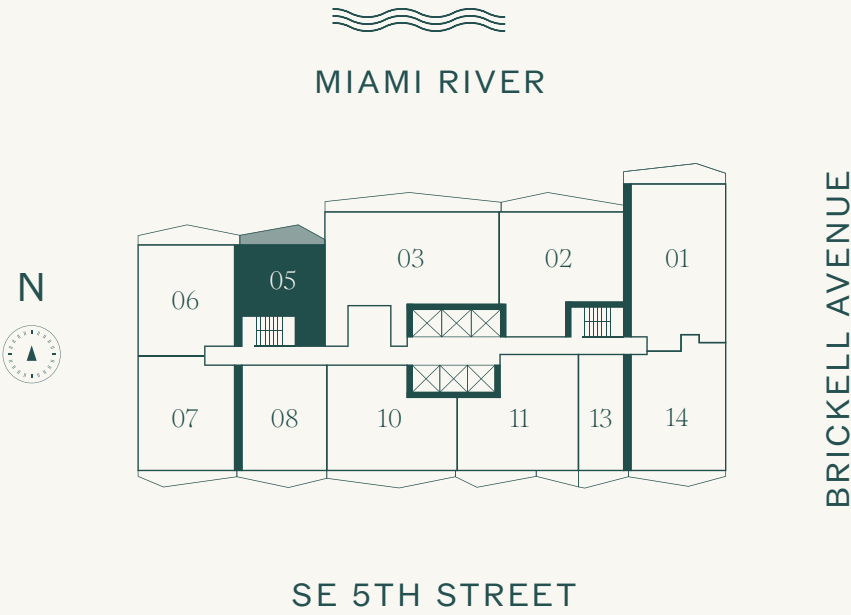
LEVEL 43  
NORTH EXPOSURE

1 BEDROOM  
1 BATHROOM

INTERIOR  
670 SF | 62.25 M<sup>2</sup>

TERRACE  
113 SF | 10.50 M<sup>2</sup>

TOTAL  
783 SF | 72.75 M<sup>2</sup>



ⓘ The dimensions stated for this floor plan are approximate because there are various recognized methods for calculating the square footage of a unit. The square footage stated here is calculated from the exterior boundaries of the exterior walls to the centerline of interior demising walls without deductions for cutouts, curves, or architectural features. This method typically results in quoted dimensions greater than the dimensions that would be determined by using other accepted methods. The definition of "Unit" and the calculation method to be relied upon is set forth by 444 BRICKELL TWO, LLC (the "Developer") in Developer's prospectus which method may result in a square footage calculation less than the result of the calculation method used here. VICEROY BRANDS, LLC owns the mark and name Viceroy®. The Developer is permitted to use the name and logo of The Related Group® and Viceroy® pursuant to license agreements which are valid unless terminated or expired; neither The Related Group nor Viceroy Brands, LLC are the Developer. Consult the Developer's prospectus to learn what is included with Unit purchase and to understand Unit dimensions. 2025 © 444 BRICKELL TWO, LLC with all rights reserved.



Penthouse 06

VICEROY BRICKELL  
THE RESIDENCES

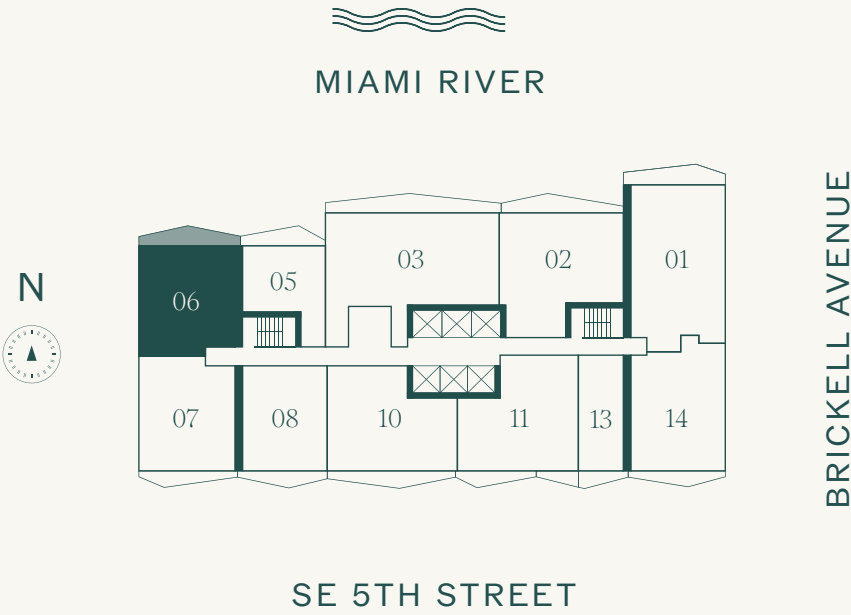
LEVEL 43  
NORTH WEST EXPOSURE

2 BEDROOMS  
2 BATHROOMS

INTERIOR  
1,041 SF | 96.71 M<sup>2</sup>

TERRACE  
137 SF | 12.73 M<sup>2</sup>

TOTAL  
1,178 SF | 109.44 M<sup>2</sup>



ⓘ The dimensions stated for this floor plan are approximate because there are various recognized methods for calculating the square footage of a unit. The square footage stated here is calculated from the exterior boundaries of the exterior walls to the centerline of interior demising walls without deductions for cutouts, curves, or architectural features. This method typically results in quoted dimensions greater than the dimensions that would be determined by using other accepted methods. The definition of "Unit" and the calculation method to be relied upon is set forth by 444 BRICKELL TWO, LLC (the "Developer") in Developer's prospectus which method may result in a square footage calculation less than the result of the calculation method used here. VICEROY BRANDS, LLC owns the mark and name Viceroy®. The Developer is permitted to use the name and logo of The Related Group® and Viceroy® pursuant to license agreements which are valid unless terminated or expired; neither The Related Group nor Viceroy Brands, LLC are the Developer. Consult the Developer's prospectus to learn what is included with Unit purchase and to understand Unit dimensions. 2025 © 444 BRICKELL TWO, LLC with all rights reserved.



Penthouse 07

VICEROY BRICKELL  
THE RESIDENCES

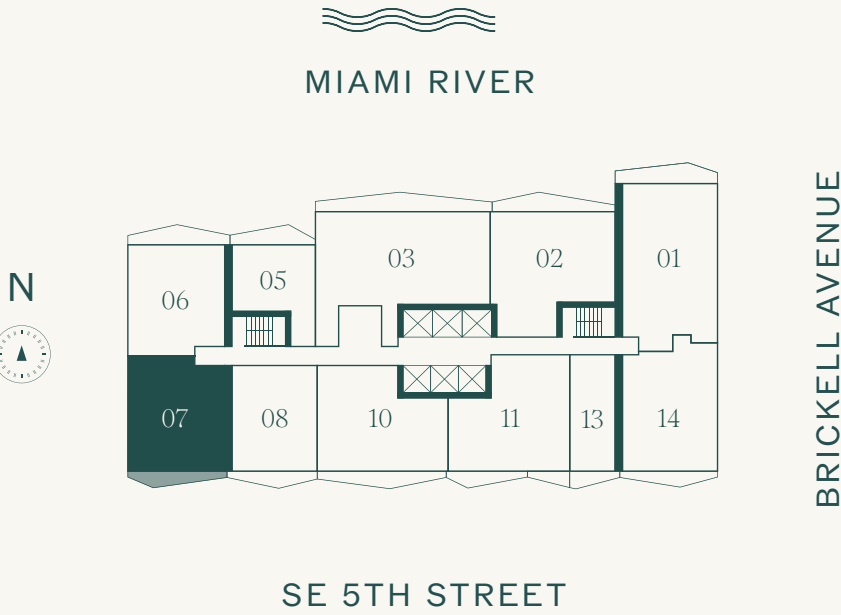
LEVEL 43  
SOUTH WEST EXPOSURE

2 BEDROOMS  
2 BATHROOMS

INTERIOR  
1,030 SF | 95.69 M<sup>2</sup>

TERRACE  
104 SF | 9.66 M<sup>2</sup>

TOTAL  
1,134 SF | 105.35 M<sup>2</sup>



ⓘ The dimensions stated for this floor plan are approximate because there are various recognized methods for calculating the square footage of a unit. The square footage stated here is calculated from the exterior boundaries of the exterior walls to the centerline of interior demising walls without deductions for cutouts, curves, or architectural features. This method typically results in quoted dimensions greater than the dimensions that would be determined by using other accepted methods. The definition of "Unit" and the calculation method to be relied upon is set forth by 444 BRICKELL TWO, LLC (the "Developer") in Developer's prospectus which method may result in a square footage calculation less than the result of the calculation method used here. VICEROY BRANDS, LLC owns the mark and name Viceroy®. The Developer is permitted to use the name and logo of The Related Group® and Viceroy® pursuant to license agreements which are valid unless terminated or expired; neither The Related Group nor Viceroy Brands, LLC are the Developer. Consult the Developer's prospectus to learn what is included with Unit purchase and to understand Unit dimensions. 2025 © 444 BRICKELL TWO, LLC with all rights reserved.



Penthouse 08

VICEROY BRICKELL  
THE RESIDENCES

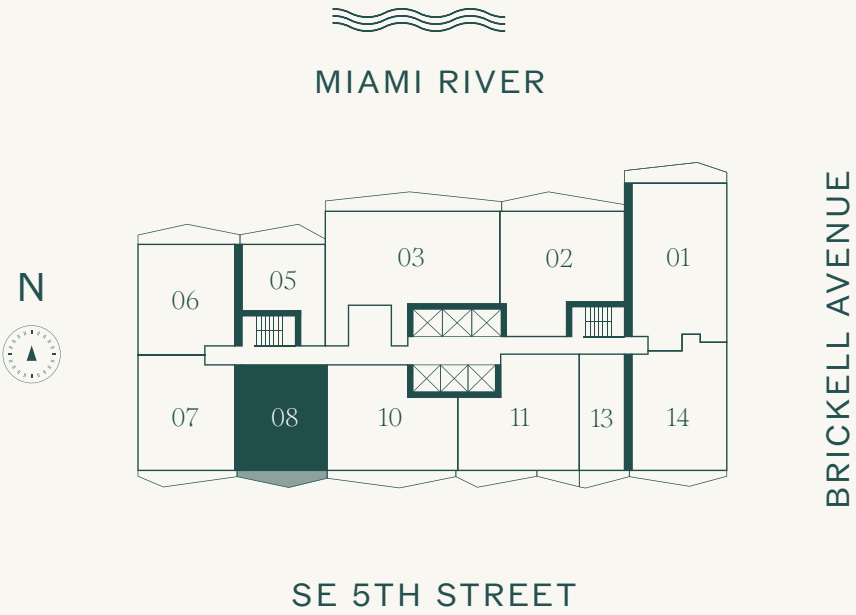
LEVEL 43  
SOUTH EXPOSURE

1 BEDROOM  
1 BATHROOM

INTERIOR  
862 SF | 80.08 M<sup>2</sup>

TERRACE  
96 SF | 8.92 M<sup>2</sup>

TOTAL  
958 SF | 89 M<sup>2</sup>



ⓘ The dimensions stated for this floor plan are approximate because there are various recognized methods for calculating the square footage of a unit. The square footage stated here is calculated from the exterior boundaries of the exterior walls to the centerline of interior demising walls without deductions for cutouts, curves, or architectural features. This method typically results in quoted dimensions greater than the dimensions that would be determined by using other accepted methods. The definition of "Unit" and the calculation method to be relied upon is set forth by 444 BRICKELL TWO, LLC (the "Developer") in Developer's prospectus which method may result in a square footage calculation less than the result of the calculation method used here. VICEROY BRANDS, LLC owns the mark and name Viceroy®. The Developer is permitted to use the name and logo of The Related Group® and Viceroy® pursuant to license agreements which are valid unless terminated or expired; neither The Related Group nor Viceroy Brands, LLC are the Developer. Consult the Developer's prospectus to learn what is included with Unit purchase and to understand Unit dimensions. 2025 © 444 BRICKELL TWO, LLC with all rights reserved.



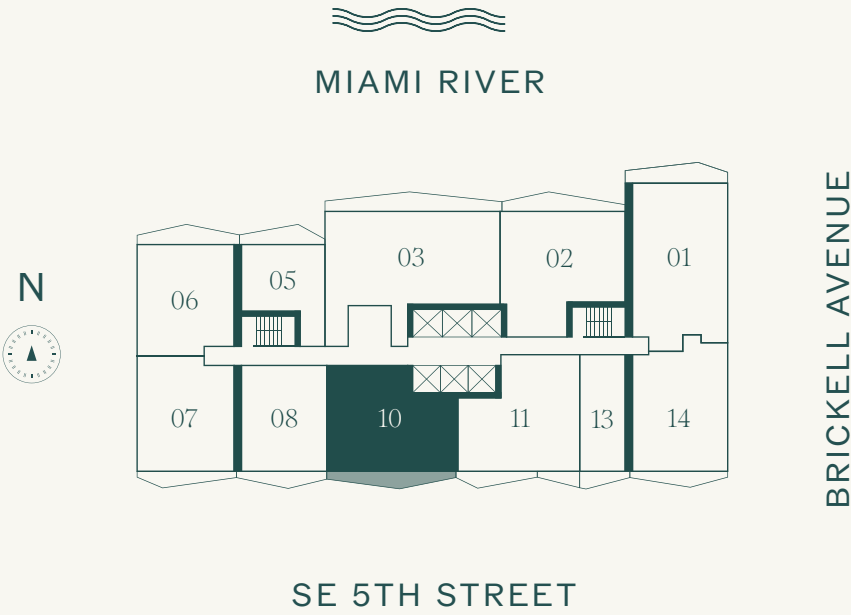
LEVEL 43  
SOUTH EXPOSURE

2 BEDROOMS  
2 BATHROOMS

INTERIOR  
1,172 SF | 108.88 M<sup>2</sup>

TERRACE  
135 SF | 12.54 M<sup>2</sup>

TOTAL  
1,307 SF | 121.42 M<sup>2</sup>



ⓘ The dimensions stated for this floor plan are approximate because there are various recognized methods for calculating the square footage of a unit. The square footage stated here is calculated from the exterior boundaries of the exterior walls to the centerline of interior demising walls without deductions for cutouts, curves, or architectural features. This method typically results in quoted dimensions greater than the dimensions that would be determined by using other accepted methods. The definition of "Unit" and the calculation method to be relied upon is set forth by 444 BRICKELL TWO, LLC (the "Developer") in Developer's prospectus which method may result in a square footage calculation less than the result of the calculation method used here. VICEROY BRANDS, LLC owns the mark and name Viceroy®. The Developer is permitted to use the name and logo of The Related Group® and Viceroy® pursuant to license agreements which are valid unless terminated or expired; neither The Related Group nor Viceroy Brands, LLC are the Developer. Consult the Developer's prospectus to learn what is included with Unit purchase and to understand Unit dimensions. 2025 © 444 BRICKELL TWO, LLC with all rights reserved.



Penthouse 11

VICEROY BRICKELL  
THE RESIDENCES

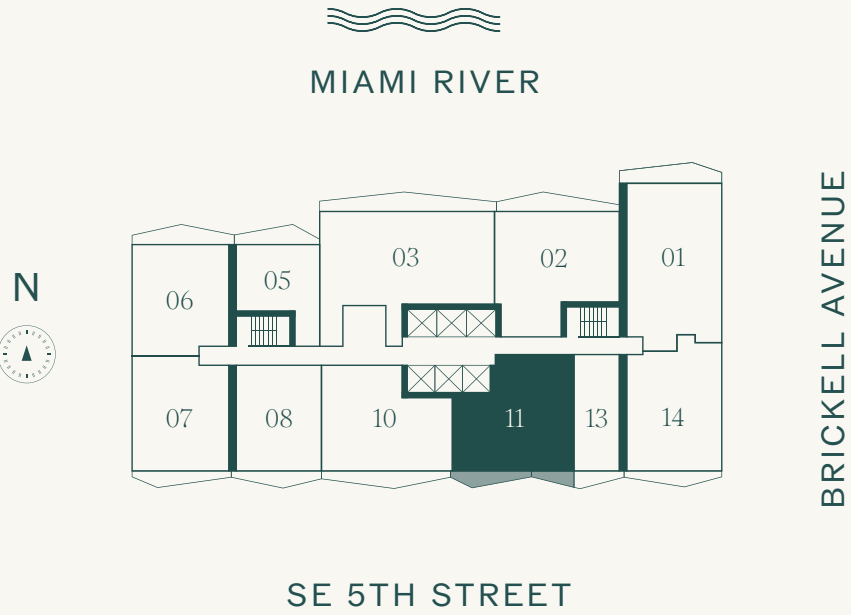
LEVEL 43  
SOUTH EXPOSURE

2 BEDROOMS  
2 BATHROOMS

INTERIOR  
1,188 SF | 110.37 M<sup>2</sup>

TERRACE  
127 SF | 11.80 M<sup>2</sup>

TOTAL  
1,315 SF | 122.17 M<sup>2</sup>



ⓘ The dimensions stated for this floor plan are approximate because there are various recognized methods for calculating the square footage of a unit. The square footage stated here is calculated from the exterior boundaries of the exterior walls to the centerline of interior demising walls without deductions for cutouts, curves, or architectural features. This method typically results in quoted dimensions greater than the dimensions that would be determined by using other accepted methods. The definition of "Unit" and the calculation method to be relied upon is set forth by 444 BRICKELL TWO, LLC (the "Developer") in Developer's prospectus which method may result in a square footage calculation less than the result of the calculation method used here. VICEROY BRANDS, LLC owns the mark and name Viceroy®. The Developer is permitted to use the name and logo of The Related Group® and Viceroy® pursuant to license agreements which are valid unless terminated or expired; neither The Related Group nor Viceroy Brands, LLC are the Developer. Consult the Developer's prospectus to learn what is included with Unit purchase and to understand Unit dimensions. 2025 © 444 BRICKELL TWO, LLC with all rights reserved.



Penthouse 13

VICEROY BRICKELL  
THE RESIDENCES

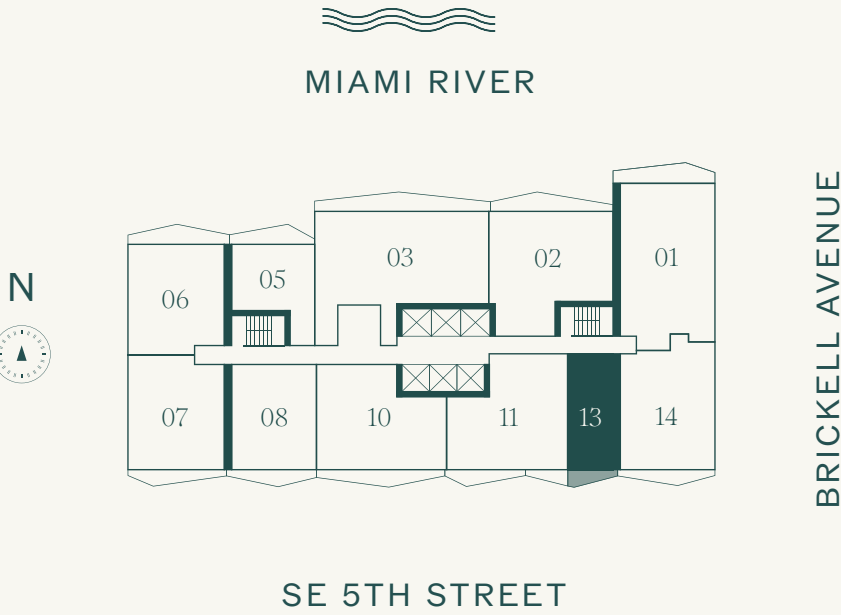
LEVEL 43  
SOUTH EXPOSURE

STUDIO  
1 BATHROOM

INTERIOR  
539 SF | 50.07 M²

TERRACE  
55 SF | 5.11 M²

TOTAL  
594 SF | 55.18 M²



ⓘ The dimensions stated for this floor plan are approximate because there are various recognized methods for calculating the square footage of a unit. The square footage stated here is calculated from the exterior boundaries of the exterior walls to the centerline of interior demising walls without deductions for cutouts, curves, or architectural features. This method typically results in quoted dimensions greater than the dimensions that would be determined by using other accepted methods. The definition of "Unit" and the calculation method to be relied upon is set forth by 444 BRICKELL TWO, LLC (the "Developer") in Developer's prospectus which method may result in a square footage calculation less than the result of the calculation method used here. VICEROY BRANDS, LLC owns the mark and name Viceroy®. The Developer is permitted to use the name and logo of The Related Group® and Viceroy® pursuant to license agreements which are valid unless terminated or expired; neither The Related Group nor Viceroy Brands, LLC are the Developer. Consult the Developer's prospectus to learn what is included with Unit purchase and to understand Unit dimensions. 2025 © 444 BRICKELL TWO, LLC with all rights reserved.



Penthouse 14

VICEROY BRICKELL  
THE RESIDENCES

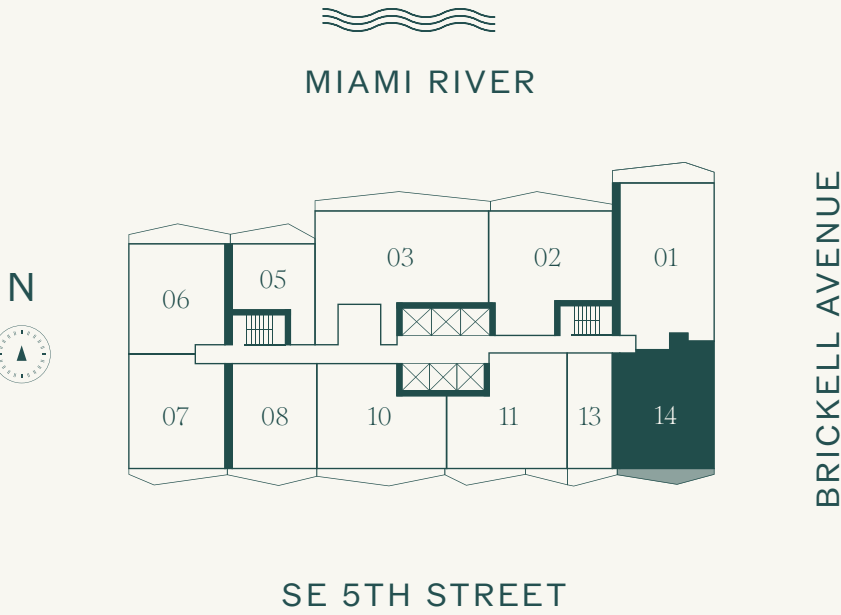
LEVEL 43  
SOUTH EAST EXPOSURE

2 BEDROOMS  
2 BATHROOMS

INTERIOR  
1,132 SF | 105.17 M<sup>2</sup>

TERRACE  
102 SF | 9.48 M<sup>2</sup>

TOTAL  
1,234 SF | 114.65 M<sup>2</sup>



ⓘ The dimensions stated for this floor plan are approximate because there are various recognized methods for calculating the square footage of a unit. The square footage stated here is calculated from the exterior boundaries of the exterior walls to the centerline of interior demising walls without deductions for cutouts, curves, or architectural features. This method typically results in quoted dimensions greater than the dimensions that would be determined by using other accepted methods. The definition of "Unit" and the calculation method to be relied upon is set forth by 444 BRICKELL TWO, LLC (the "Developer") in Developer's prospectus which method may result in a square footage calculation less than the result of the calculation method used here. VICEROY BRANDS, LLC owns the mark and name Viceroy®. The Developer is permitted to use the name and logo of The Related Group® and Viceroy® pursuant to license agreements which are valid unless terminated or expired; neither The Related Group nor Viceroy Brands, LLC are the Developer. Consult the Developer's prospectus to learn what is included with Unit purchase and to understand Unit dimensions. 2025 © 444 BRICKELL TWO, LLC with all rights reserved.

# VICEROY BRICKELL

## THE RESIDENCES

UPPER PENTHOUSE FLOOR PLANS



Upper Penthouse 01

VICEROY BRICKELL  
THE RESIDENCES



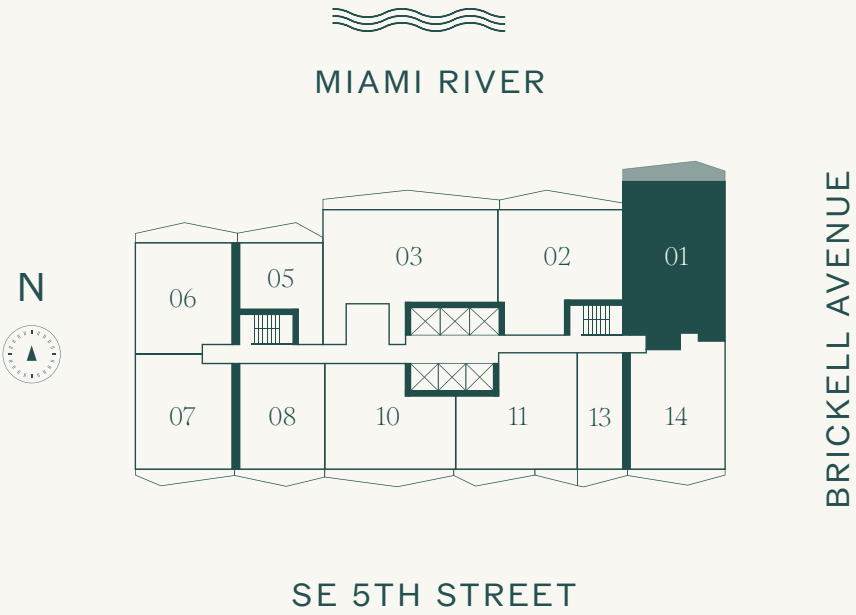
LEVEL 44  
NORTH EAST EXPOSURE

3 BEDROOMS  
3 BATHROOMS

INTERIOR  
1,481 SF | 137.59 M<sup>2</sup>

TERRACE  
141 SF | 13.09 M<sup>2</sup>

TOTAL  
1,622 SF | 150.68 M<sup>2</sup>



ⓘ The dimensions stated for this floor plan are approximate because there are various recognized methods for calculating the square footage of a unit. The square footage stated here is calculated from the exterior boundaries of the exterior walls to the centerline of interior demising walls without deductions for cutouts, curves, or architectural features. This method typically results in quoted dimensions greater than the dimensions that would be determined by using other accepted methods. The definition of "Unit" and the calculation method to be relied upon is set forth by 444 BRICKELL TWO, LLC (the "Developer") in Developer's prospectus which method may result in a square footage calculation less than the result of the calculation method used here. VICEROY BRANDS, LLC owns the mark and name Viceroy®. The Developer is permitted to use the name and logo of The Related Group® and Viceroy® pursuant to license agreements which are valid unless terminated or expired; neither The Related Group nor Viceroy Brands, LLC are the Developer. Consult the Developer's prospectus to learn what is included with Unit purchase and to understand Unit dimensions. 2025 © 444 BRICKELL TWO, LLC with all rights reserved.



Upper Penthouse 02

VICEROY BRICKELL  
THE RESIDENCES



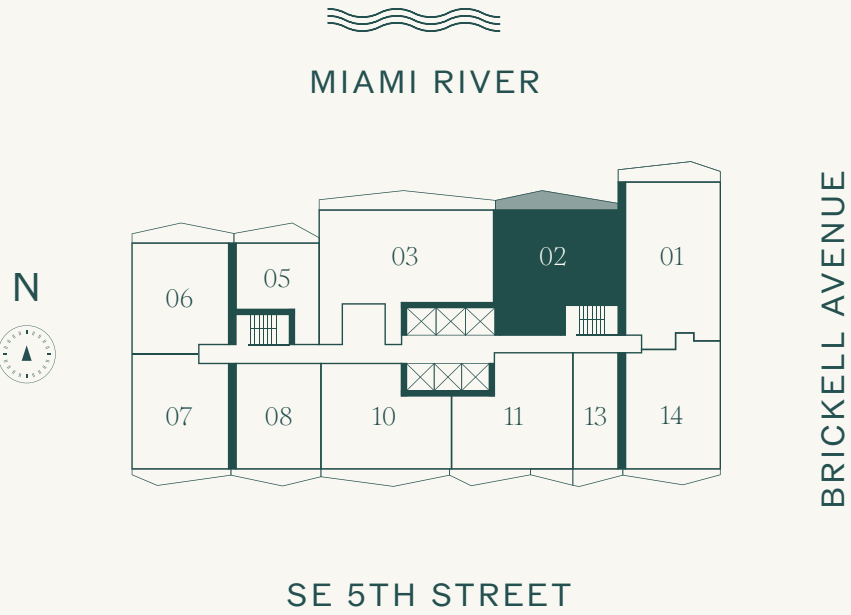
LEVEL 44  
NORTH EXPOSURE

2 BEDROOMS  
2 BATHROOMS

INTERIOR  
1,286 SF | 119.47 M<sup>2</sup>

TERRACE  
162 SF | 15.05 M<sup>2</sup>

TOTAL  
1,448 SF | 134.52 M<sup>2</sup>



ⓘ The dimensions stated for this floor plan are approximate because there are various recognized methods for calculating the square footage of a unit. The square footage stated here is calculated from the exterior boundaries of the exterior walls to the centerline of interior demising walls without deductions for cutouts, curves, or architectural features. This method typically results in quoted dimensions greater than the dimensions that would be determined by using other accepted methods. The definition of "Unit" and the calculation method to be relied upon is set forth by 444 BRICKELL TWO, LLC (the "Developer") in Developer's prospectus which method may result in a square footage calculation less than the result of the calculation method used here. VICEROY BRANDS, LLC owns the mark and name Viceroy®. The Developer is permitted to use the name and logo of The Related Group® and Viceroy® pursuant to license agreements which are valid unless terminated or expired; neither The Related Group nor Viceroy Brands, LLC are the Developer. Consult the Developer's prospectus to learn what is included with Unit purchase and to understand Unit dimensions. 2025 © 444 BRICKELL TWO, LLC with all rights reserved.



Upper Penthouse 03

VICEROY BRICKELL  
THE RESIDENCES



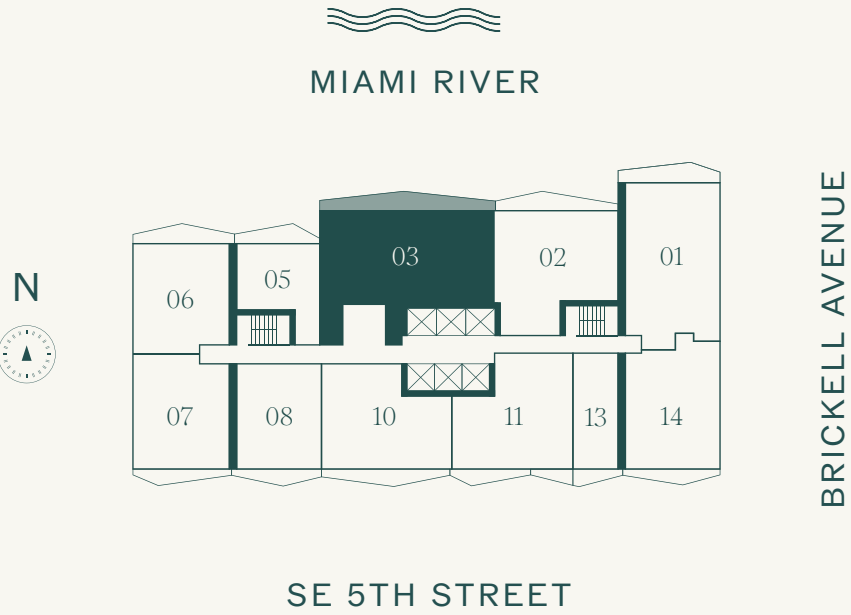
LEVEL 44  
NORTH EXPOSURE

3 BEDROOMS  
3 BATHROOMS

INTERIOR  
1,755 SF | 163.04 M<sup>2</sup>

TERRACE  
244 SF | 22.67 M<sup>2</sup>

TOTAL  
1,999 SF | 185.71 M<sup>2</sup>



ⓘ The dimensions stated for this floor plan are approximate because there are various recognized methods for calculating the square footage of a unit. The square footage stated here is calculated from the exterior boundaries of the exterior walls to the centerline of interior demising walls without deductions for cutouts, curves, or architectural features. This method typically results in quoted dimensions greater than the dimensions that would be determined by using other accepted methods. The definition of "Unit" and the calculation method to be relied upon is set forth by 444 BRICKELL TWO, LLC (the "Developer") in Developer's prospectus which method may result in a square footage calculation less than the result of the calculation method used here. VICEROY BRANDS, LLC owns the mark and name Viceroy®. The Developer is permitted to use the name and logo of The Related Group® and Viceroy® pursuant to license agreements which are valid unless terminated or expired; neither The Related Group nor Viceroy Brands, LLC are the Developer. Consult the Developer's prospectus to learn what is included with Unit purchase and to understand Unit dimensions. 2025 © 444 BRICKELL TWO, LLC with all rights reserved.



Upper Penthouse 05

VICEROY BRICKELL  
THE RESIDENCES

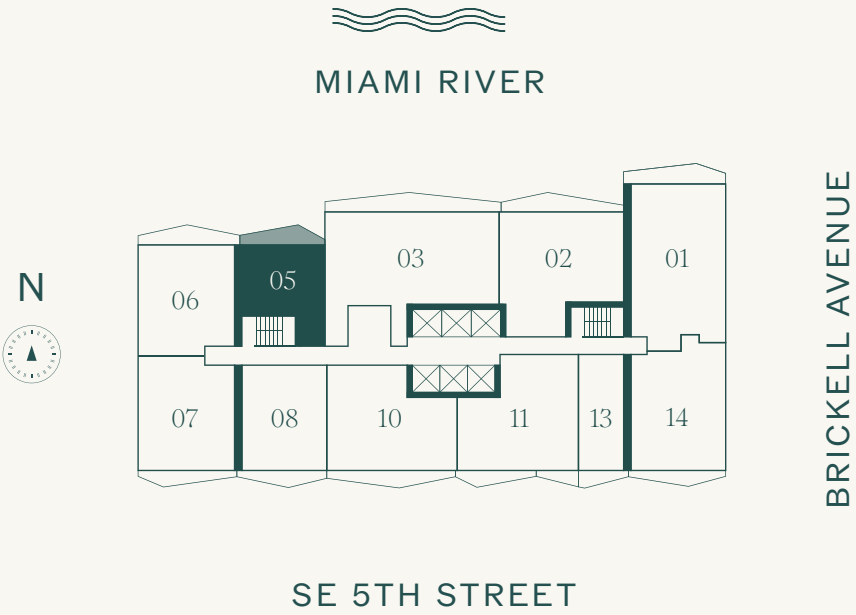
LEVEL 44  
NORTH EXPOSURE

1 BEDROOM  
1 BATHROOM

INTERIOR  
670 SF | 62.25 M<sup>2</sup>

TERRACE  
113 SF | 10.50 M<sup>2</sup>

TOTAL  
783 SF | 72.75 M<sup>2</sup>



ⓘ The dimensions stated for this floor plan are approximate because there are various recognized methods for calculating the square footage of a unit. The square footage stated here is calculated from the exterior boundaries of the exterior walls to the centerline of interior demising walls without deductions for cutouts, curves, or architectural features. This method typically results in quoted dimensions greater than the dimensions that would be determined by using other accepted methods. The definition of "Unit" and the calculation method to be relied upon is set forth by 444 BRICKELL TWO, LLC (the "Developer") in Developer's prospectus which method may result in a square footage calculation less than the result of the calculation method used here. VICEROY BRANDS, LLC owns the mark and name Viceroy®. The Developer is permitted to use the name and logo of The Related Group® and Viceroy® pursuant to license agreements which are valid unless terminated or expired; neither The Related Group nor Viceroy Brands, LLC are the Developer. Consult the Developer's prospectus to learn what is included with Unit purchase and to understand Unit dimensions. 2025 © 444 BRICKELL TWO, LLC with all rights reserved.



Upper Penthouse 06

VICEROY BRICKELL  
THE RESIDENCES

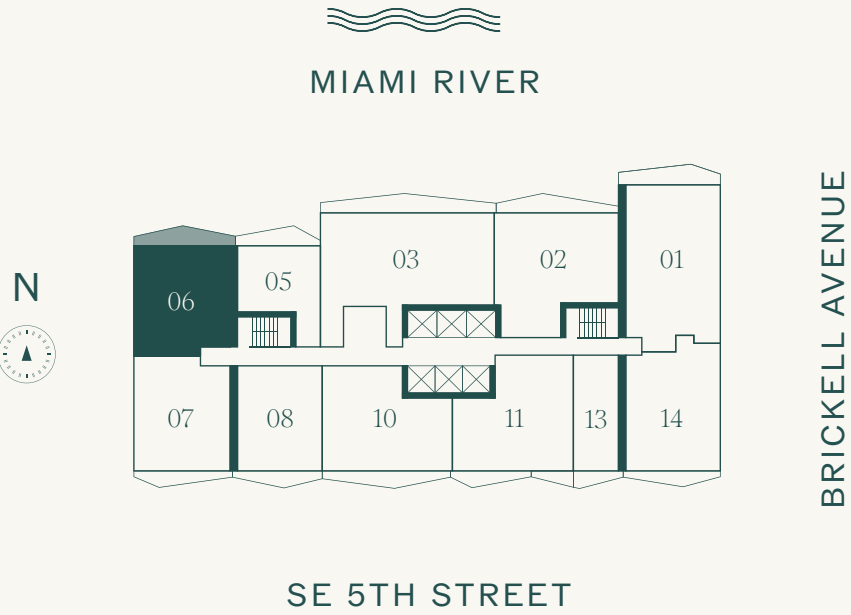
LEVEL 44  
NORTH WEST EXPOSURE

2 BEDROOMS  
2 BATHROOMS

INTERIOR  
1,041 SF | 96.71 M<sup>2</sup>

TERRACE  
137 SF | 12.73 M<sup>2</sup>

TOTAL  
1,178 SF | 109.44 M<sup>2</sup>



ⓘ The dimensions stated for this floor plan are approximate because there are various recognized methods for calculating the square footage of a unit. The square footage stated here is calculated from the exterior boundaries of the exterior walls to the centerline of interior demising walls without deductions for cutouts, curves, or architectural features. This method typically results in quoted dimensions greater than the dimensions that would be determined by using other accepted methods. The definition of "Unit" and the calculation method to be relied upon is set forth by 444 BRICKELL TWO, LLC (the "Developer") in Developer's prospectus which method may result in a square footage calculation less than the result of the calculation method used here. VICEROY BRANDS, LLC owns the mark and name Viceroy®. The Developer is permitted to use the name and logo of The Related Group® and Viceroy® pursuant to license agreements which are valid unless terminated or expired; neither The Related Group nor Viceroy Brands, LLC are the Developer. Consult the Developer's prospectus to learn what is included with Unit purchase and to understand Unit dimensions. 2025 © 444 BRICKELL TWO, LLC with all rights reserved.



Upper Penthouse 07

VICEROY BRICKELL  
THE RESIDENCES

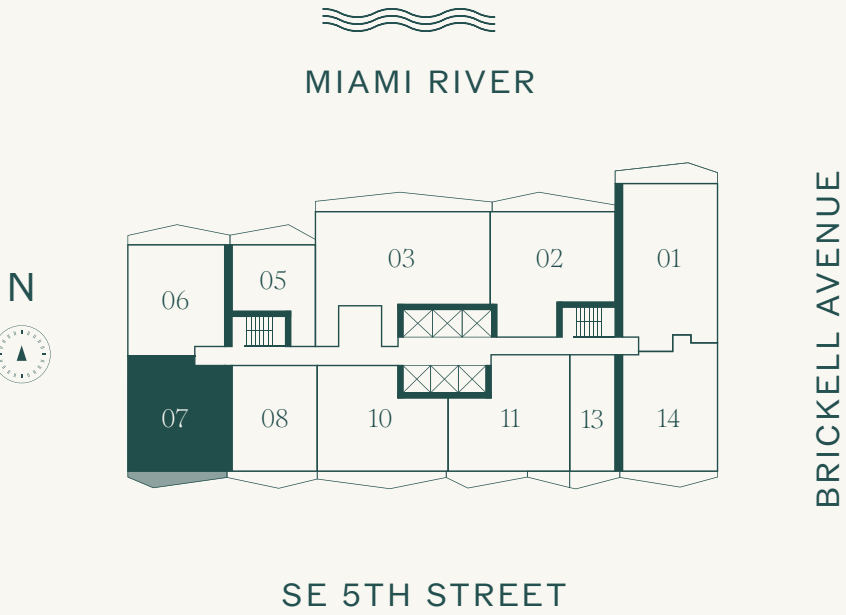
LEVEL 44  
SOUTH WEST EXPOSURE

2 BEDROOMS  
2 BATHROOMS

INTERIOR  
1,030 SF | 95.69 M<sup>2</sup>

TERRACE  
104 SF | 9.66 M<sup>2</sup>

TOTAL  
1,134 SF | 105.35 M<sup>2</sup>



ⓘ The dimensions stated for this floor plan are approximate because there are various recognized methods for calculating the square footage of a unit. The square footage stated here is calculated from the exterior boundaries of the exterior walls to the centerline of interior demising walls without deductions for cutouts, curves, or architectural features. This method typically results in quoted dimensions greater than the dimensions that would be determined by using other accepted methods. The definition of "Unit" and the calculation method to be relied upon is set forth by 444 BRICKELL TWO, LLC (the "Developer") in Developer's prospectus which method may result in a square footage calculation less than the result of the calculation method used here. VICEROY BRANDS, LLC owns the mark and name Viceroy®. The Developer is permitted to use the name and logo of The Related Group® and Viceroy® pursuant to license agreements which are valid unless terminated or expired; neither The Related Group nor Viceroy Brands, LLC are the Developer. Consult the Developer's prospectus to learn what is included with Unit purchase and to understand Unit dimensions. 2025 © 444 BRICKELL TWO, LLC with all rights reserved.



Upper Penthouse 08

VICEROY BRICKELL  
THE RESIDENCES

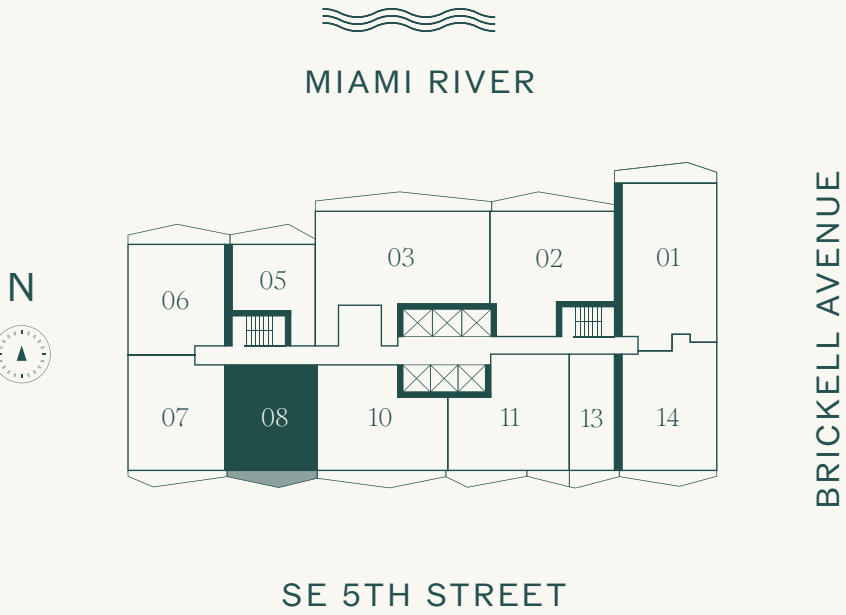
LEVEL 44  
SOUTH EXPOSURE

1 BEDROOM  
1 BATHROOM

INTERIOR  
862 SF | 80.08 M<sup>2</sup>

TERRACE  
96 SF | 8.92 M<sup>2</sup>

TOTAL  
958 SF | 89 M<sup>2</sup>



ⓘ The dimensions stated for this floor plan are approximate because there are various recognized methods for calculating the square footage of a unit. The square footage stated here is calculated from the exterior boundaries of the exterior walls to the centerline of interior demising walls without deductions for cutouts, curves, or architectural features. This method typically results in quoted dimensions greater than the dimensions that would be determined by using other accepted methods. The definition of "Unit" and the calculation method to be relied upon is set forth by 444 BRICKELL TWO, LLC (the "Developer") in Developer's prospectus which method may result in a square footage calculation less than the result of the calculation method used here. VICEROY BRANDS, LLC owns the mark and name Viceroy®. The Developer is permitted to use the name and logo of The Related Group® and Viceroy® pursuant to license agreements which are valid unless terminated or expired; neither The Related Group nor Viceroy Brands, LLC are the Developer. Consult the Developer's prospectus to learn what is included with Unit purchase and to understand Unit dimensions. 2025 © 444 BRICKELL TWO, LLC with all rights reserved.



Upper Penthouse 10

VICEROY BRICKELL  
THE RESIDENCES

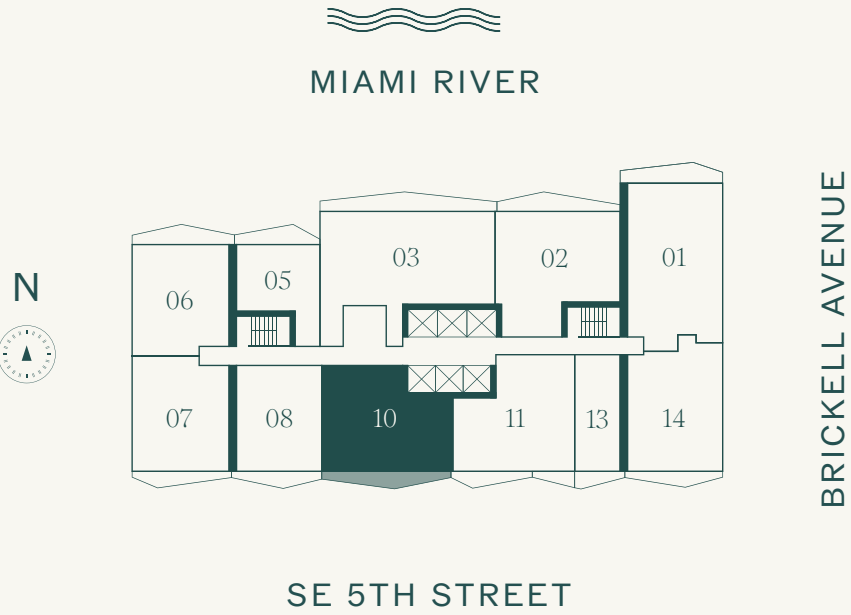
LEVEL 44  
SOUTH EXPOSURE

2 BEDROOMS  
2 BATHROOMS

INTERIOR  
1,172 SF | 108.88 M<sup>2</sup>

TERRACE  
135 SF | 12.54 M<sup>2</sup>

TOTAL  
1,307 SF | 121.42 M<sup>2</sup>



ⓘ The dimensions stated for this floor plan are approximate because there are various recognized methods for calculating the square footage of a unit. The square footage stated here is calculated from the exterior boundaries of the exterior walls to the centerline of interior demising walls without deductions for cutouts, curves, or architectural features. This method typically results in quoted dimensions greater than the dimensions that would be determined by using other accepted methods. The definition of "Unit" and the calculation method to be relied upon is set forth by 444 BRICKELL TWO, LLC (the "Developer") in Developer's prospectus which method may result in a square footage calculation less than the result of the calculation method used here. VICEROY BRANDS, LLC owns the mark and name Viceroy®. The Developer is permitted to use the name and logo of The Related Group® and Viceroy® pursuant to license agreements which are valid unless terminated or expired; neither The Related Group nor Viceroy Brands, LLC are the Developer. Consult the Developer's prospectus to learn what is included with Unit purchase and to understand Unit dimensions. 2025 © 444 BRICKELL TWO, LLC with all rights reserved.



Upper Penthouse 11

VICEROY BRICKELL  
THE RESIDENCES



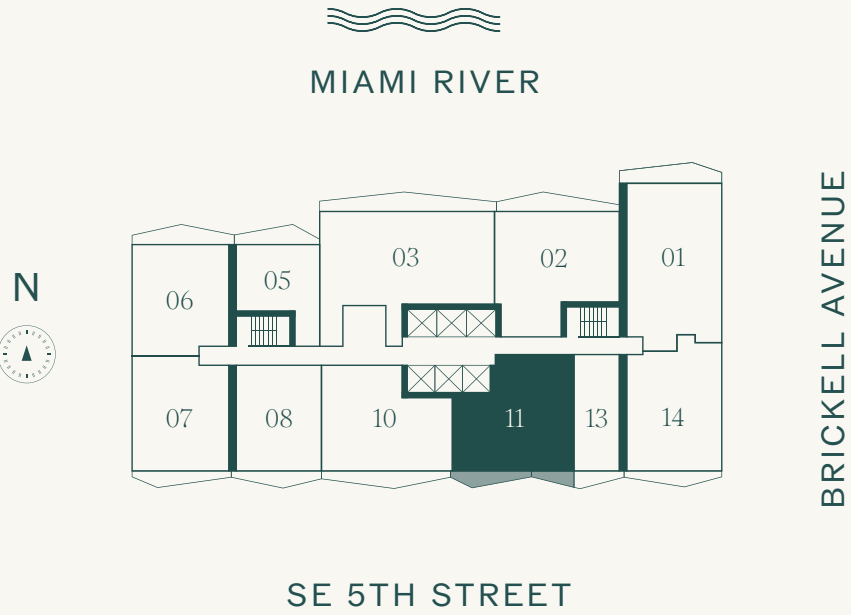
LEVEL 44  
SOUTH EXPOSURE

2 BEDROOMS  
2 BATHROOMS

INTERIOR  
1,188 SF | 110.37 M<sup>2</sup>

TERRACE  
127 SF | 11.80 M<sup>2</sup>

TOTAL  
1,315 SF | 122.17 M<sup>2</sup>



ⓘ The dimensions stated for this floor plan are approximate because there are various recognized methods for calculating the square footage of a unit. The square footage stated here is calculated from the exterior boundaries of the exterior walls to the centerline of interior demising walls without deductions for cutouts, curves, or architectural features. This method typically results in quoted dimensions greater than the dimensions that would be determined by using other accepted methods. The definition of "Unit" and the calculation method to be relied upon is set forth by 444 BRICKELL TWO, LLC (the "Developer") in Developer's prospectus which method may result in a square footage calculation less than the result of the calculation method used here. VICEROY BRANDS, LLC owns the mark and name Viceroy®. The Developer is permitted to use the name and logo of The Related Group® and Viceroy® pursuant to license agreements which are valid unless terminated or expired; neither The Related Group nor Viceroy Brands, LLC are the Developer. Consult the Developer's prospectus to learn what is included with Unit purchase and to understand Unit dimensions. 2025 © 444 BRICKELL TWO, LLC with all rights reserved.



Upper Penthouse 13

VICEROY BRICKELL  
THE RESIDENCES

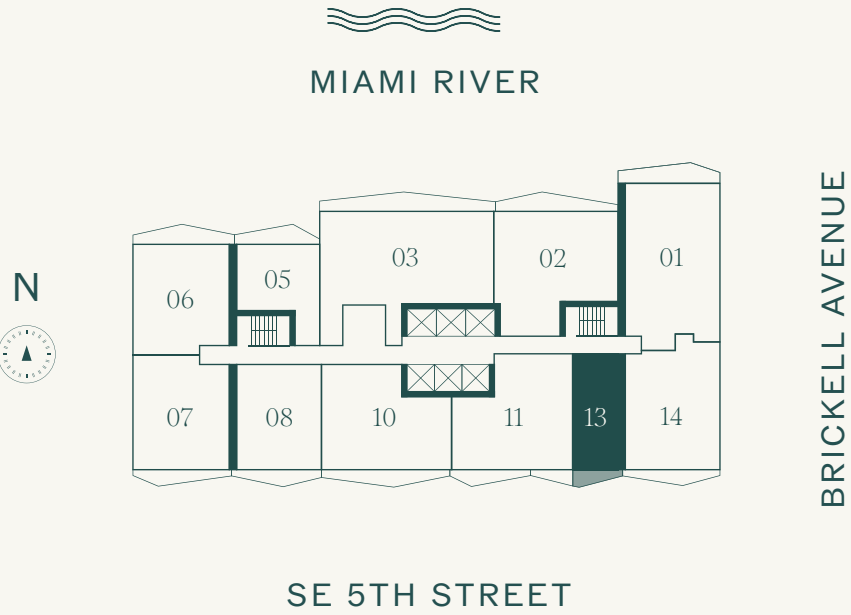
LEVEL 44  
SOUTH EXPOSURE

STUDIO  
1 BATHROOM

INTERIOR  
539 SF | 50.07 M²

TERRACE  
55 SF | 5.11 M²

TOTAL  
594 SF | 55.18 M²



ⓘ The dimensions stated for this floor plan are approximate because there are various recognized methods for calculating the square footage of a unit. The square footage stated here is calculated from the exterior boundaries of the exterior walls to the centerline of interior demising walls without deductions for cutouts, curves, or architectural features. This method typically results in quoted dimensions greater than the dimensions that would be determined by using other accepted methods. The definition of "Unit" and the calculation method to be relied upon is set forth by 444 BRICKELL TWO, LLC (the "Developer") in Developer's prospectus which method may result in a square footage calculation less than the result of the calculation method used here. VICEROY BRANDS, LLC owns the mark and name Viceroy®. The Developer is permitted to use the name and logo of The Related Group® and Viceroy® pursuant to license agreements which are valid unless terminated or expired; neither The Related Group nor Viceroy Brands, LLC are the Developer. Consult the Developer's prospectus to learn what is included with Unit purchase and to understand Unit dimensions. 2025 © 444 BRICKELL TWO, LLC with all rights reserved.



Upper Penthouse 14

VICEROY BRICKELL  
THE RESIDENCES

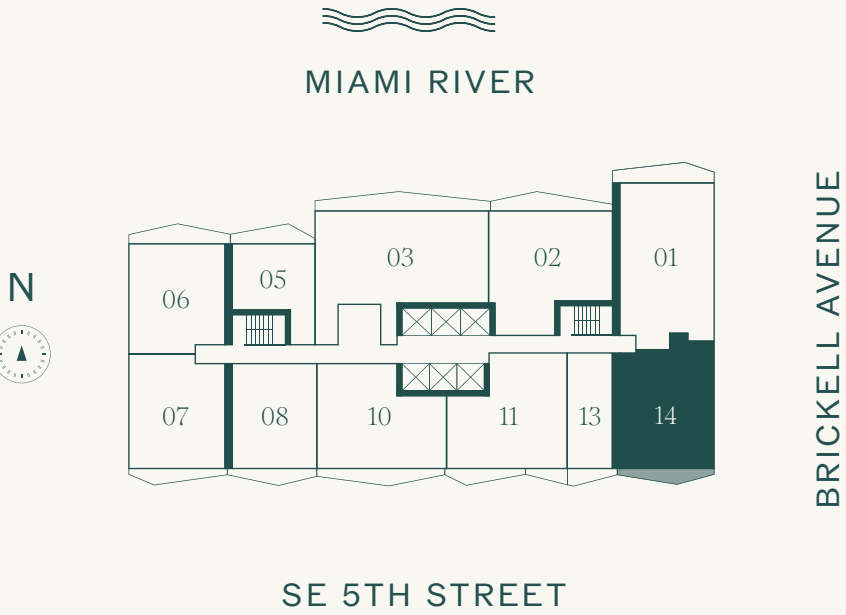
LEVEL 44  
SOUTH EAST EXPOSURE

2 BEDROOMS  
2 BATHROOMS

INTERIOR  
1,132 SF | 105.17 M²

TERRACE  
102 SF | 9.48 M²

TOTAL  
1,234 SF | 114.65 M²



ⓘ The dimensions stated for this floor plan are approximate because there are various recognized methods for calculating the square footage of a unit. The square footage stated here is calculated from the exterior boundaries of the exterior walls to the centerline of interior demising walls without deductions for cutouts, curves, or architectural features. This method typically results in quoted dimensions greater than the dimensions that would be determined by using other accepted methods. The definition of "Unit" and the calculation method to be relied upon is set forth by 444 BRICKELL TWO, LLC (the "Developer") in Developer's prospectus which method may result in a square footage calculation less than the result of the calculation method used here. VICEROY BRANDS, LLC owns the mark and name Viceroy®. The Developer is permitted to use the name and logo of The Related Group® and Viceroy® pursuant to license agreements which are valid unless terminated or expired; neither The Related Group nor Viceroy Brands, LLC are the Developer. Consult the Developer's prospectus to learn what is included with Unit purchase and to understand Unit dimensions. 2025 © 444 BRICKELL TWO, LLC with all rights reserved.





RELATED



GTIS PARTNERS

VICEROY

Ⓔ ORAL REPRESENTATIONS CANNOT BE RELIED UPON AS CORRECTLY STATING REPRESENTATIONS OF THE DEVELOPER. FOR CORRECT REPRESENTATIONS, MAKE REFERENCE TO THIS BROCHURE AND THE DOCUMENTS REQUIRED BY SECTION 718.503, FLORIDA STATUTES, TO BE FURNISHED BY A DEVELOPER TO A BUYER OR LESSEE. This condominium, marketed as Viceroy Brickell The Residences (the “Condominium”), is developed by 444 BRICKELL TWO, LLC (“Developer”) and this offering is made only by the Developer’s Prospectus for the Condominium. No statement should be relied upon if not made in the Developer’s Prospectus. VICEROY BRANDS, LLC owns the mark and name Viceroy®. Developer, pursuant to license agreements, has a right to use the trade names, marks, and logos of The Related Group and VICEROY BRANDS, LLC. The use of the names and marks of Viceroy® shall only continue for so long as the license agreement with VICEROY BRANDS, LLC is in effect. This is not intended to be an offer to sell, or solicitation of an offer to buy, condominium units in any other jurisdiction if prohibited by law unless the condominium is registered if required or exempt. Developer is not a resident of New York. Consult the Developer’s Prospectus for the proposed budget, all terms, conditions, specifications, Unit dimensions and to learn what is included with your Unit purchase and payment of regular assessments. Reproduction for private or commercial use is not authorized. 2025 © by 444 BRICKELL TWO, LLC with all rights reserved.