

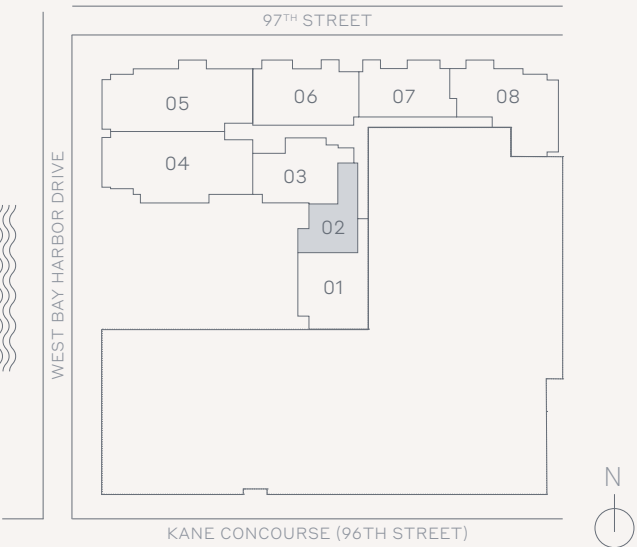
Residence 02

1 Bedroom / 1.5 Bathrooms

Specifications

Interior	1,150 SQ. FT.   107 M²
Exterior	*179 SQ. FT.   16 M²
Total	1,329 SQ. FT.   123M²

\*Balcony square footage subject to range between 151-179 Sq. Ft. depending on floor  
\*Dotted line indicates balcony area at levels 3, 5, and 7



This project is being developed by 1177 Bay Harbor Islands LLC, a Delaware limited liability company ("Developer"), which has a limited right to use the trademarked names and logos of Terra and THE WELL. Any and all statements, disclosures and/or representations shall be deemed made by Developer and not by Terra or THE WELL, and you agree to look solely to Developer (and not to Terra, THE WELL or any of their affiliates) with respect to any and all matters relating to the marketing and/or development of the project. The Terra and THE WELL groups of companies are each comprised of several separate companies that are legally distinct. Reference to Terra and THE WELL is merely for convenience and should not be relied upon for any other purposes. Oral representations cannot be relied upon as correctly stating the representations of the developer. For correct representations, make reference to this brochure and to the documents required by section 718.505, Florida statutes, to be furnished by a developer to a buyer or lessee. These materials are not intended to be an offer to sell, or solicitation to buy a unit in the condominium. Such an offering shall only be made pursuant to the prospectus (offering circular) for the condominium and no statements should be relied upon unless made in the prospectus or in the applicable purchase agreement. In no event shall any solicitation, offer or sale of a unit in the condominium be made in, or to residents of, any state or country in which such activity would be unlawful. Stated square footages and dimensions are measured to the exterior boundaries of the exterior walls and the centerline of interior demising walls and in fact vary from the square footage and dimensions that would be determined by using the description and definition of the "Unit" set forth in the Declaration (which generally only includes the interior airspace between the perimeter walls and excludes all interior structural components and other common elements). This method is generally used in sales materials and is provided to allow a prospective buyer to compare the Units with units in other condominium projects that utilize the same method. Measurements of rooms set forth on this floor plan are generally taken at the farthest points of each given room (as if the room were a perfect rectangle), without regard for any cutouts or variations. Accordingly, the area of the actual room will typically be smaller than the product obtained by multiplying the stated length and width. All dimensions are estimates which will vary with actual construction, and all floor plans, specifications and other development plans are subject to change and will not necessarily accurately reflect the final plans and specifications for the development. The project graphics, renderings and text provided herein are copyrighted works owned by the Developer. All rights reserved. Unauthorized reproduction, display or other dissemination of such materials is strictly prohibited and constitutes copyright infringement. No real estate broker is authorized to make any representations or other statements regarding the projects, and no agreements with, deposits paid to or other arrangements made with any real estate broker are or shall be binding on the Developer. Equal housing opportunity. ®



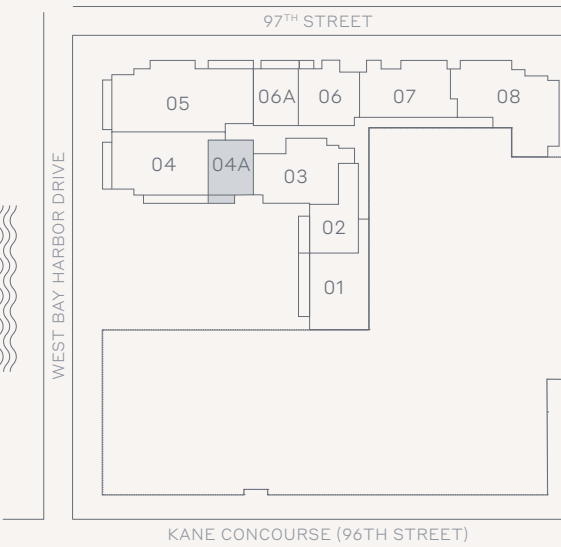
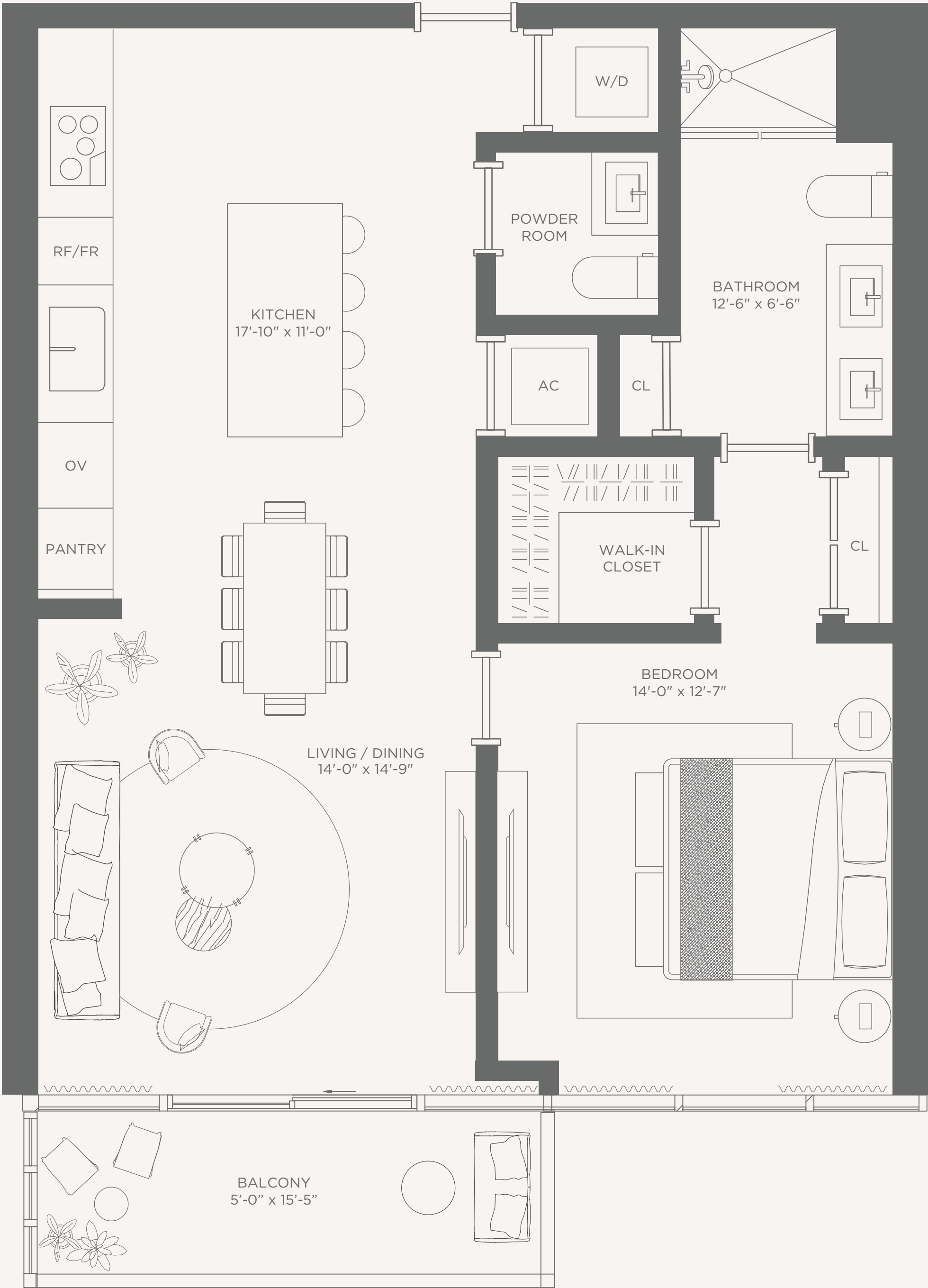
# Residence 04B

1 Bedrooms / 1.5 Bathrooms

### Specifications

Interior	941 SQ. FT.   87 M <sup>2</sup>
Exterior	*89 SQ. FT.   8 M <sup>2</sup>
Total	1,036 SQ. FT.   95 M <sup>2</sup>

*\*Balcony square footage subject to range between 89-111 Sq. Ft. depending on floor*  
*\*Dotted line indicates balcony area at levels 4, 6, and 8*



This project is being developed by 1177 Bay Harbor Islands LLC, a Delaware limited liability company ("Developer"), which has a limited right to use the trademarked names and logos of Terra and THE WELL. Any and all statements, disclosures and/or representations shall be deemed made by Developer and not by Terra or THE WELL, and you agree to look solely to Developer (and not to Terra, THE WELL or any of their affiliates) with respect to any and all matters relating to the marketing and/or development of the project. The Terra and THE WELL groups of companies are each comprised of several separate companies that are legally distinct. Reference to Terra and THE WELL is merely for convenience and should not be relied upon for any other purposes. Oral representations cannot be relied upon as correctly stating the representations of the developer. For correct representations, make reference to this brochure and to the documents required by section 718.505, Florida statutes, to be furnished by a developer to a buyer or lessee. These materials are not intended to be an offer to sell, or solicitation to buy a unit in the condominium. Such an offering shall only be made pursuant to the prospectus (offering circular) for the condominium and no statements should be relied upon unless made in the prospectus or in the applicable purchase agreement. In no event shall any solicitation, offer or sale of a unit in the condominium be made in, or to residents of, any state or country in which such activity would be unlawful. Stated square footages and dimensions are measured to the exterior boundaries of the exterior walls and the centerline of interior demising walls and in fact vary from the square footage and dimensions that would be determined by using the description and definition of the "Unit" set forth in the Declaration (which generally only includes the interior airspace between the perimeter walls and excludes all interior structural components and other common elements). This method is generally used in sales materials and is provided to allow a prospective buyer to compare the Units with units in other condominium projects that utilize the same method. Measurements of rooms set forth on this floor plan are generally taken at the farthest points of each given room (as if the room were a perfect rectangle), without regard for any cutouts or variations. Accordingly, the area of the actual room will typically be smaller than the product obtained by multiplying the stated length and width. All dimensions are estimates which will vary with actual construction, and all floor plans, specifications and other development plans are subject to change and will not necessarily accurately reflect the final plans and specifications for the development. The project graphics, renderings and text provided herein are copyrighted works owned by the Developer. All rights reserved. Unauthorized reproduction, display or other dissemination of such materials is strictly prohibited and constitutes copyright infringement. No real estate broker is authorized to make any representations or other statements regarding the projects, and no agreements with, deposits paid to or other arrangements made with any real estate broker are or shall be binding on the Developer. Equal housing opportunity. ♻️

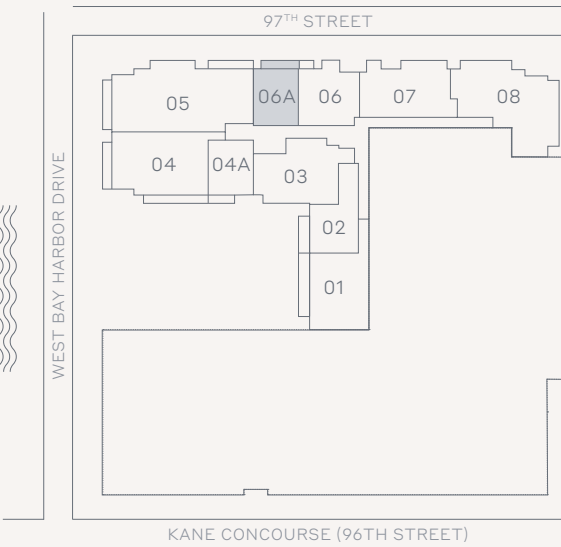
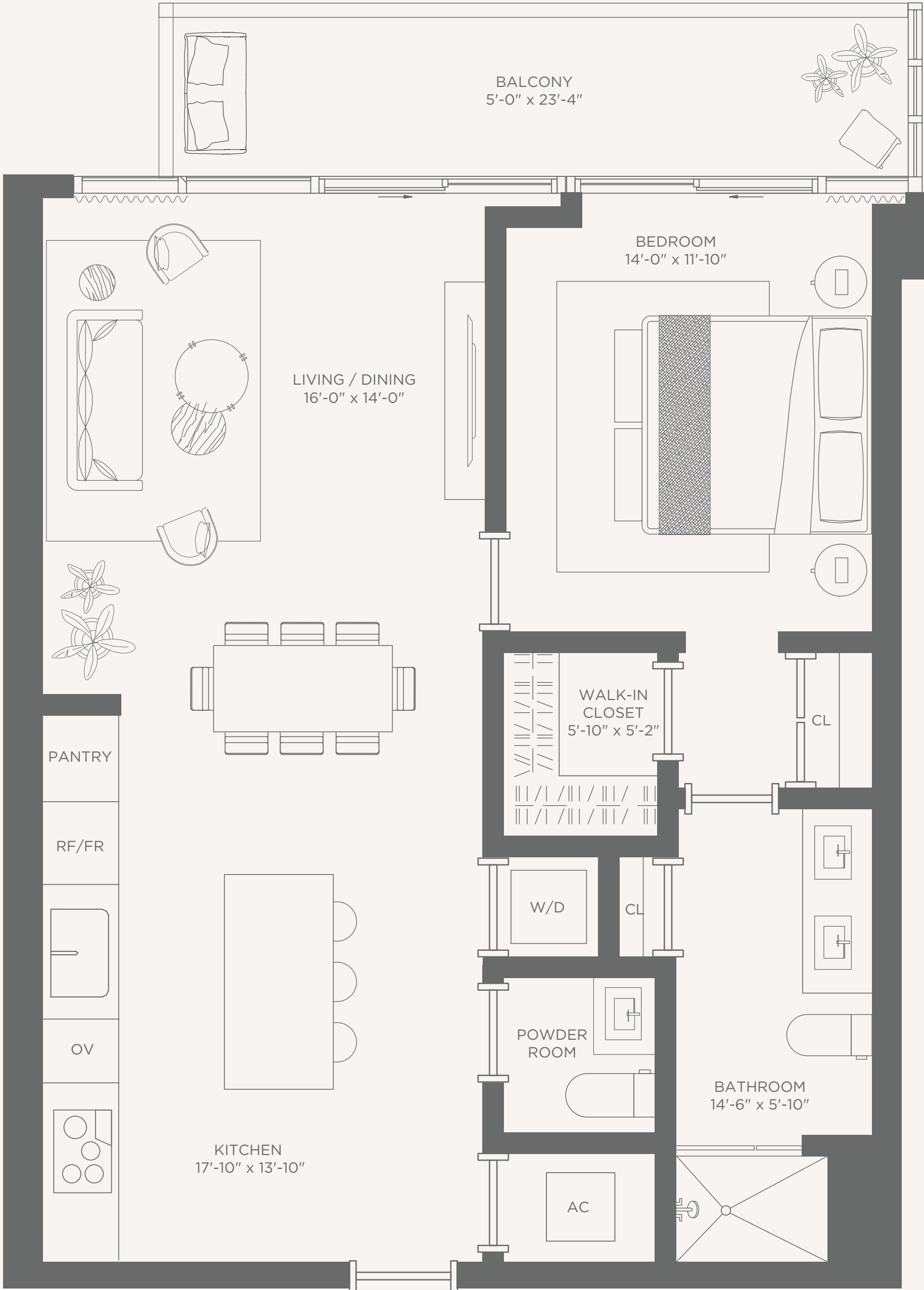
# Residence 06A

1 Bedrooms / 1.5 Bathrooms

### Specifications

Interior	946 SQ. FT.   88 M <sup>2</sup>
Exterior	133 SQ. FT.   12 M <sup>2</sup>
Total	1,079 SQ. FT.   100 M <sup>2</sup>

\*Balcony square footage subject to range between 282-303 Sq. Ft. depending on floor  
\*Dotted line indicates balcony area at levels 4, 6, and 8



This project is being developed by 1177 Bay Harbor Islands LLC, a Delaware limited liability company ("Developer"), which has a limited right to use the trademarked names and logos of Terra and THE WELL. Any and all statements, disclosures and/or representations shall be deemed made by Developer and not by Terra or THE WELL, and you agree to look solely to Developer (and not to Terra, THE WELL or any of their affiliates) with respect to any and all matters relating to the marketing and/or development of the project. The Terra and THE WELL groups of companies are each comprised of several separate companies that are legally distinct. Reference to Terra and THE WELL is merely for convenience and should not be relied upon for any other purposes. Oral representations cannot be relied upon as correctly stating the representations of the developer. For correct representations, make reference to this brochure and to the documents required by section 718.505, Florida statutes, to be furnished by a developer to a buyer or lessee. These materials are not intended to be an offer to sell, or solicitation to buy a unit in the condominium. Such an offering shall only be made pursuant to the prospectus (offering circular) for the condominium and no statements should be relied upon unless made in the prospectus or in the applicable purchase agreement. In no event shall any solicitation, offer or sale of a unit in the condominium be made in, or to residents of, any state or country in which such activity would be unlawful. Stated square footages and dimensions are measured to the exterior boundaries of the exterior walls and the centerline of interior demising walls and in fact vary from the square footage and dimensions that would be determined by using the description and definition of the "Unit" set forth in the Declaration (which generally only includes the interior airspace between the perimeter walls and excludes all interior structural components and other common elements). This method is generally used in sales materials and is provided to allow a prospective buyer to compare the Units with units in other condominium projects that utilize the same method. Measurements of rooms set forth on this floor plan are generally taken at the farthest points of each given room (as if the room were a perfect rectangle), without regard for any cutouts or variations. Accordingly, the area of the actual room will typically be smaller than the product obtained by multiplying the stated length and width. All dimensions are estimates which will vary with actual construction, and all floor plans, specifications and other development plans are subject to change and will not necessarily accurately reflect the final plans and specifications for the development. The project graphics, renderings and text provided herein are copyrighted works owned by the Developer. All rights reserved. Unauthorized reproduction, display or other dissemination of such materials is strictly prohibited and constitutes copyright infringement. No real estate broker is authorized to make any representations or other statements regarding the projects, and no agreements with, deposits paid to or other arrangements made with any real estate broker are or shall be binding on the Developer. Equal housing opportunity. ®



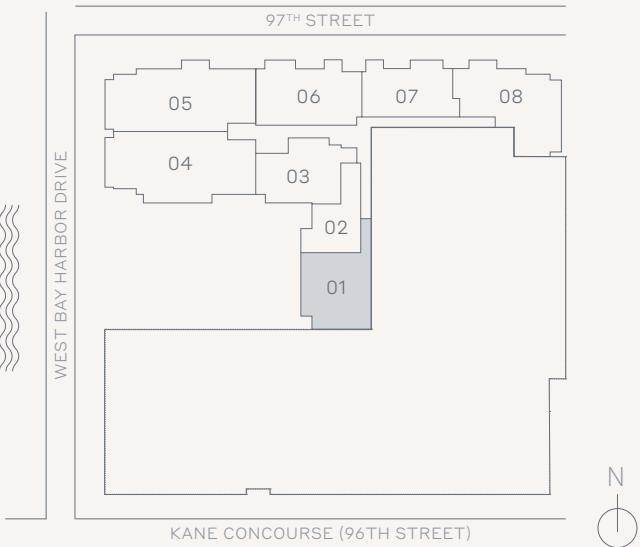
Residence 01

2 Bedrooms / 2.5 Bathrooms

Specifications

Interior	1,849 SQ. FT.   171 M <sup>2</sup>
Exterior	*303 SQ. FT.   28 M <sup>2</sup>
Total	2,152 SQ. FT.   199 M <sup>2</sup>

*\*Balcony square footage subject to range between 282-303 Sq. Ft. depending on floor*  
*\*Dotted line indicates balcony area at levels 3, 5, and 7*



This project is being developed by 1177 Bay Harbor Islands LLC, a Delaware limited liability company ("Developer"), which has a limited right to use the trademarked names and logos of Terra and THE WELL. Any and all statements, disclosures and/or representations shall be deemed made by Developer and not by Terra or THE WELL, and you agree to look solely to Developer (and not to Terra, THE WELL or any of their affiliates) with respect to any and all matters relating to the marketing and/or development of the project. The Terra and THE WELL groups of companies are each comprised of several separate companies that are legally distinct. Reference to Terra and THE WELL is merely for convenience and should not be relied upon for any other purposes. Oral representations cannot be relied upon as correctly stating the representations of the developer. For correct representations, make reference to this brochure and to the documents required by section 718.505, Florida statutes, to be furnished by a developer to a buyer or lessee. These materials are not intended to be an offer to sell, or solicitation to buy a unit in the condominium. Such an offering shall only be made pursuant to the prospectus (offering circular) for the condominium and no statements should be relied upon unless made in the prospectus or in the applicable purchase agreement. In no event shall any solicitation, offer or sale of a unit in the condominium be made in, or to residents of, any state or country in which such activity would be unlawful. Stated square footages and dimensions are measured to the exterior boundaries of the exterior walls and the centerline of interior demising walls and in fact vary from the square footage and dimensions that would be determined by using the description and definition of the "Unit" set forth in the Declaration (which generally only includes the interior airspace between the perimeter walls and excludes all interior structural components and other common elements). This method is generally used in sales materials and is provided to allow a prospective buyer to compare the Units with units in other condominium projects that utilize the same method. Measurements of rooms set forth on this floor plan are generally taken at the farthest points of each given room (as if the room were a perfect rectangle), without regard for any cutouts or variations. Accordingly, the area of the actual room will typically be smaller than the product obtained by multiplying the stated length and width. All dimensions are estimates which will vary with actual construction, and all floor plans, specifications and other development plans are subject to change and will not necessarily accurately reflect the final plans and specifications for the development. The project graphics, renderings and text provided herein are copyrighted works owned by the Developer. All rights reserved. Unauthorized reproduction, display or other dissemination of such materials is strictly prohibited and constitutes copyright infringement. No real estate broker is authorized to make any representations or other statements regarding the projects, and no agreements with, deposits paid to or other arrangements made with any real estate broker are or shall be binding on the Developer. Equal housing opportunity. ♻️



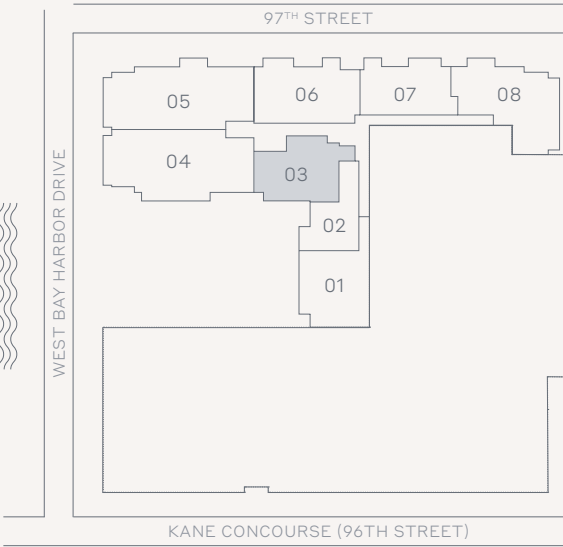
# Residence 03

2 Bedrooms / 2.5 Bathrooms

### Specifications

Interior	1,756 SQ. FT.   163 M²
Exterior	*172 SQ. FT.   16 M²
Total	1,928 SQ. FT.   179 M²

*\*Balcony square footage subject to range between 149-172 Sq. Ft. depending on floor*  
*\*Dotted line indicates balcony area at Levels 4, 6, and 8*



This condominium is being developed by 1177 Bay Harbor Islands, LLC, a Delaware limited liability company ("Developer"). Any and all statements, disclosures and/or representations shall be deemed made by Developer and you agree to look solely to Developer with respect to any and all matters relating to the marketing and/or development of the Condominium and with respect to the sales of units in the Condominium. Oral representations cannot be relied upon as correctly stating the representations of the developer. For correct representations, make reference to this brochure and to the documents required by section 718.503, Florida statutes, to be furnished by a developer to a buyer or lessee. These materials are not intended to be an offer to sell, or solicitation to buy a unit in the condominium. Such an offering shall only be made pursuant to the prospectus (offering circular) for the condominium and no statements should be relied upon unless made in the prospectus or in the applicable purchase agreement. In no event shall any solicitation, offer or sale of a unit in the condominium be made in, or to residents of, any state or country in which such activity would be unlawful. Stated square footages and dimensions are measured to the exterior boundaries of the exterior walls and the centerline of interior demising walls and in fact vary from the square footage and dimensions that would be determined by using the description and definition of the "Unit" set forth in the Declaration (which generally only includes the interior airspace between the perimeter walls and excludes all interior structural components and other common elements). This method is generally used in sales materials and is provided to allow a prospective buyer to compare the Units with units in other condominium projects that utilize the same method. Measurements of rooms set forth on this floor plan are generally taken at the farthest points of each given room (as if the room were a perfect rectangle), without regard for any cutouts or variations. Accordingly, the area of the actual room will typically be smaller than the product obtained by multiplying the stated length and width. All dimensions are estimates which will vary with actual construction, and all floor plans, specifications and other development plans are subject to change and will not necessarily accurately reflect the final plans and specifications for the development. The project graphics, renderings and text provided herein are copyrighted works owned by the Developer. All rights reserved. Unauthorized reproduction, display or other dissemination of such materials is strictly prohibited and constitutes copyright infringement. No real estate broker is authorized to make any representations or other statements regarding the project, and no agreements with, deposits paid to or other arrangements made with any real estate broker are or shall be binding on the Developer. Equal housing opportunity.

# Residence 06

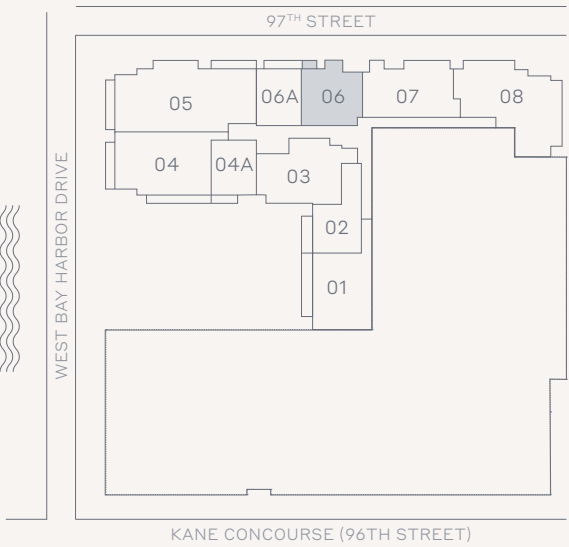
2 Bedrooms / 2.5 Bathrooms



### Specifications

Interior	1,267 SQ. FT.   118 M <sup>2</sup>
Exterior	*118 SQ. FT.   11 M <sup>2</sup>
Total	1,385 SQ. FT.   129 M <sup>2</sup>

*\*Balcony square footage subject to range between 118-139 Sq. Ft. depending on floor*  
*\*Dotted line indicates balcony area at levels 4, 6, and 8*



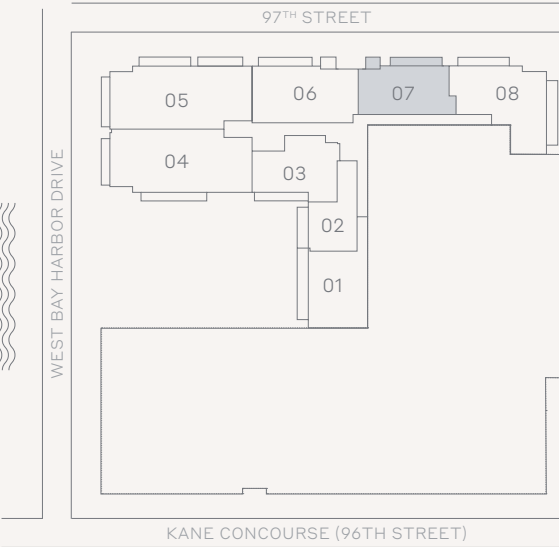
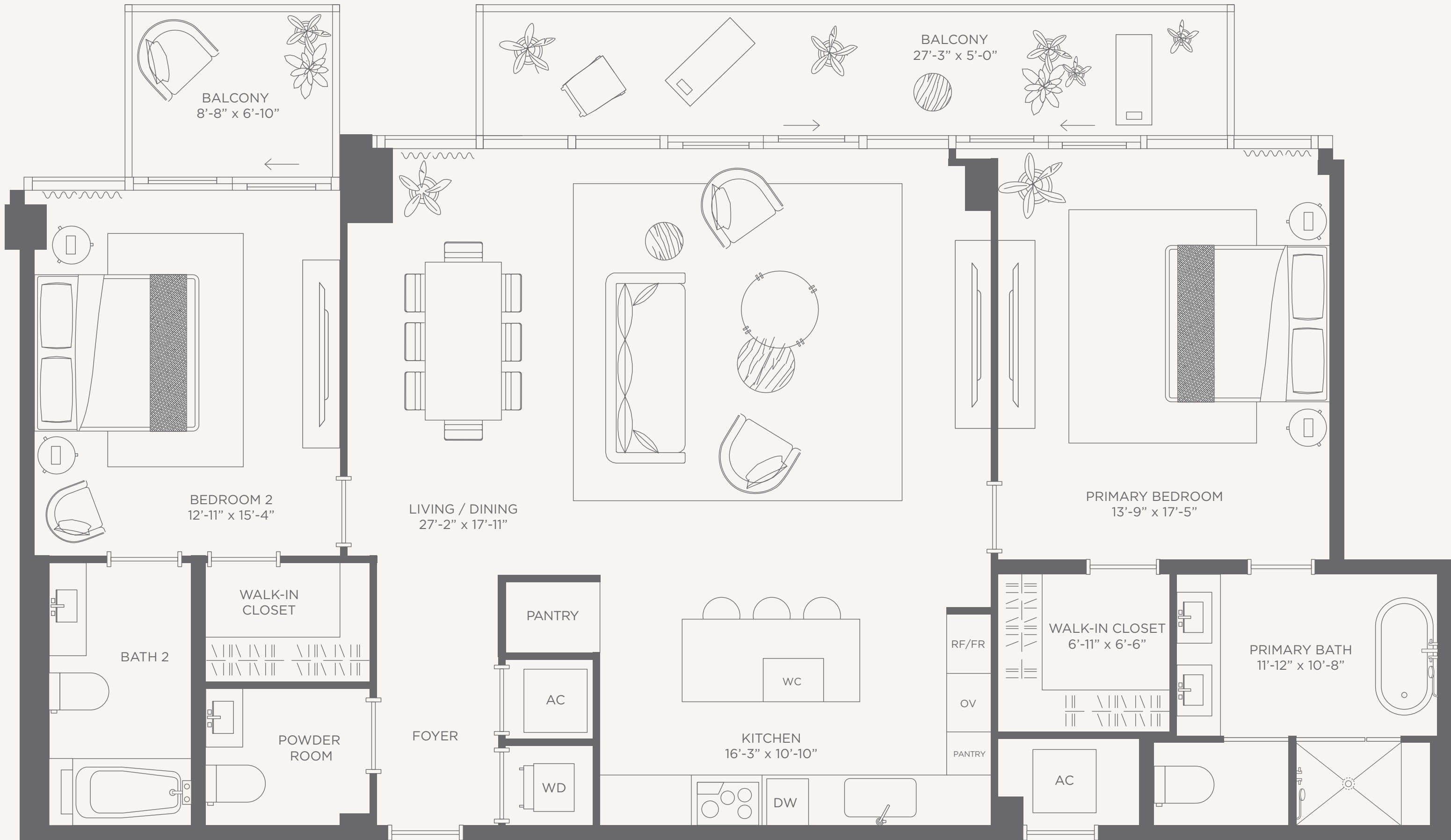
This project is being developed by 1177 Bay Harbor Islands LLC, a Delaware limited liability company ("Developer"), which has a limited right to use the trademarked names and logos of Terra and THE WELL. Any and all statements, disclosures and/or representations shall be deemed made by Developer and not by Terra or THE WELL, and you agree to look solely to Developer (and not to Terra, THE WELL or any of their affiliates) with respect to any and all matters relating to the marketing and/or development of the project. The Terra and THE WELL groups of companies are each comprised of several separate companies that are legally distinct. Reference to Terra and THE WELL is merely for convenience and should not be relied upon for any other purposes. Oral representations cannot be relied upon as correctly stating the representations of the developer. For correct representations, make reference to this brochure and to the documents required by section 718.503, Florida statutes, to be furnished by a developer to a buyer or lessee. These materials are not intended to be an offer to sell, or solicitation to buy a unit in the condominium. Such an offering shall only be made pursuant to the prospectus (offering circular) for the condominium and no statements should be relied upon unless made in the prospectus or in the applicable purchase agreement. In no event shall any solicitation, offer or sale of a unit in the condominium be made in, or to residents of, any state or country in which such activity would be unlawful. Stated square footages and dimensions are measured to the exterior boundaries of the exterior walls and the centerline of interior demising walls and in fact vary from the square footage and dimensions that would be determined by using the description and definition of the "Unit" set forth in the Declaration (which generally only includes the interior airspace between the perimeter walls and excludes all interior structural components and other common elements). This method is generally used in sales materials and is provided to allow a prospective buyer to compare the Units with units in other condominium projects that utilize the same method. Measurements of rooms set forth on this floor plan are generally taken at the farthest points of each given room (as if the room were a perfect rectangle), without regard for any cutouts or variations. Accordingly, the area of the actual room will typically be smaller than the product obtained by multiplying the stated length and width. All dimensions are estimates which will vary with actual construction, and all floor plans, specifications and other development plans are subject to change and will not necessarily accurately reflect the final plans and specifications for the development. The project graphics, renderings and text provided herein are copyrighted works owned by the Developer. All rights reserved. Unauthorized reproduction, display or other dissemination of such materials is strictly prohibited and constitutes copyright infringement. No real estate broker is authorized to make any representations or other statements regarding the projects, and no agreements with, deposits paid to or other arrangements made with any real estate broker are or shall be binding on the Developer. Equal housing opportunity. ♻️

# Residence 07

2 Bedrooms / 2.5 Bathrooms

Specifications

Interior	1,701 SQ. FT.   158 M²
Exterior	182 SF.   17 SM.
Total	1,853 SF.   172 SM.



This condominium is being developed by 1177 Bay Harbor Islands, LLC, a Delaware limited liability company ("Developer"). Any and all statements, disclosures and/or representations shall be deemed made by Developer and you agree to look solely to Developer with respect to any and all matters relating to the marketing and/or development of the Condominium and with respect to the sales of units in the Condominium. Oral representations cannot be relied upon as correctly stating the representations of the developer. For correct representations, make reference to this brochure and to the documents required by section 718.503, Florida statutes, to be furnished by a developer to a buyer or lessee. These materials are not intended to be an offer to sell, or solicitation to buy a unit in the condominium. Such an offering shall only be made pursuant to the prospectus (offering circular) for the condominium and no statements should be relied upon unless made in the prospectus or in the applicable purchase agreement. In no event shall any solicitation, offer or sale of a unit in the condominium be made in, or to residents of, any state or country in which such activity would be unlawful. Stated square footages and dimensions are measured to the exterior boundaries of the exterior walls and the centerline of interior demising walls and in fact vary from the square footage and dimensions that would be determined by using the description and definition of the "Unit" set forth in the Declaration (which generally only includes the interior airspace between the perimeter walls and excludes all interior structural components and other common elements). This method is generally used in sales materials and is provided to allow a prospective buyer to compare the Units with units in other condominium projects that utilize the same method. Measurements of rooms set forth on this floor plan are generally taken at the farthest points of each given room (as if the room were a perfect rectangle), without regard for any cutouts or variations. Accordingly, the area of the actual room will typically be smaller than the product obtained by multiplying the stated length and width. All dimensions are estimates which will vary with actual construction, and all floor plans, specifications and other development plans are subject to change and will not necessarily accurately reflect the final plans and specifications for the development. The project graphics, renderings and text provided herein are copyrighted works owned by the Developer. All rights reserved. Unauthorized reproduction, display or other dissemination of such materials is strictly prohibited and constitutes copyright infringement. No real estate broker is authorized to make any representations or other statements regarding the projects, and no agreements with, deposits paid to or other arrangements made with any real estate broker are or shall be binding on the Developer. Equal housing opportunity.

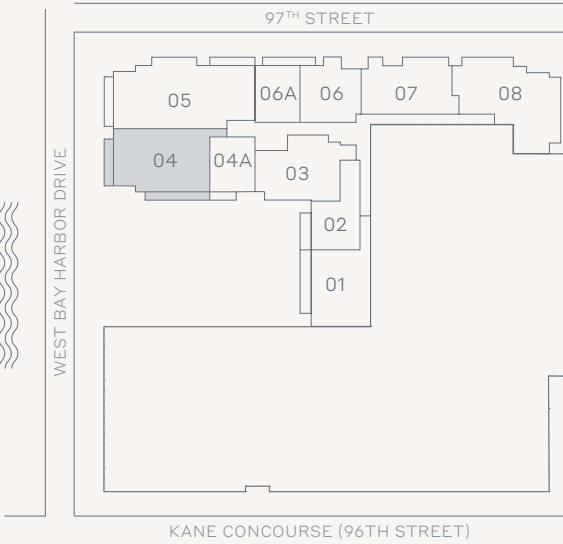
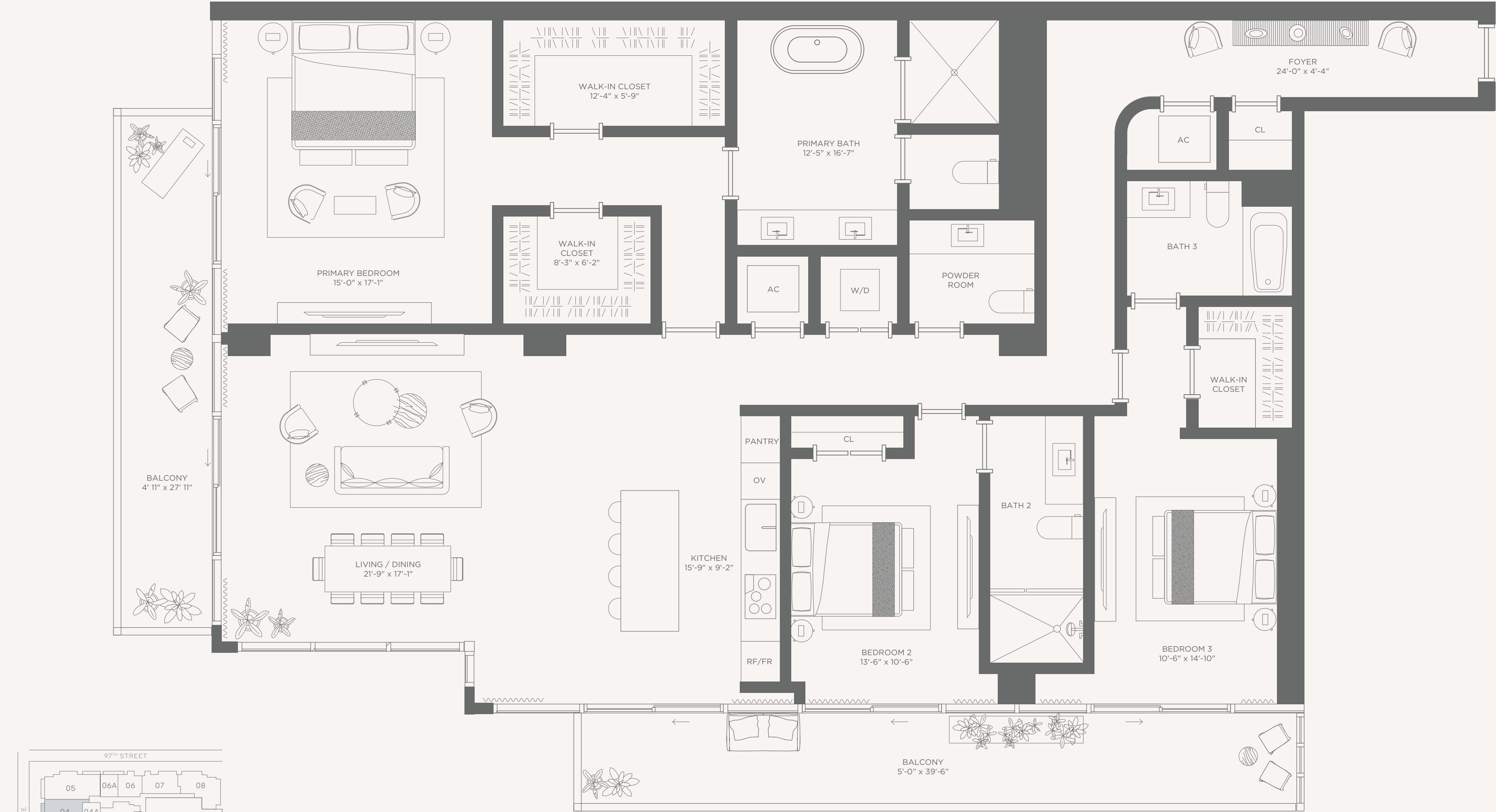
# Residence 04

3 Bedrooms / 3.5 Bathrooms

### Specifications

Interior	2,326 SQ. FT.   216 M²
Exterior	382 SQ. FT.   35 M²
Total	2,708 SQ. FT.   251 M²

*\*Balcony square footage subject to range between 149-172 Sq. Ft. depending on floor*  
*\*Dotted line indicates balcony area at Levels 3, 5, and 7*



This condominium is being developed by 1177 Bay Harbor Islands, LLC, a Delaware limited liability company ("Developer"). Any and all statements, disclosures and/or representations shall be deemed made by Developer and you agree to look solely to Developer with respect to any and all matters relating to the marketing and/or development of the Condominium and with respect to the sales of units in the Condominium. Oral representations cannot be relied upon as correctly stating the representations of the developer. For correct representations, make reference to this brochure and to the documents required by section 718.503, Florida statutes, to be furnished by a developer to a buyer or lessee. These materials are not intended to be an offer to sell, or solicitation to buy a unit in the condominium. Such an offering shall only be made pursuant to the prospectus (offering circular) for the condominium and no statements should be relied upon unless made in the prospectus or in the applicable purchase agreement. In no event shall any solicitation, offer or sale of a unit in the condominium be made in, or to residents of, any state or country in which such activity would be unlawful. Stated square footages and dimensions are measured to the exterior boundaries of the exterior walls and the centerline of interior demising walls and in fact vary from the square footage and dimensions that would be determined by using the description and definition of the "Unit" set forth in the Declaration (which generally only includes the interior airspace between the perimeter walls and excludes all interior structural components and other common elements). This method is generally used in sales materials and is provided to allow a prospective buyer to compare the Units with units in other condominium projects that utilize the same method. Measurements of rooms set forth on this floor plan are generally taken at the farthest points of each given room (as if the room were a perfect rectangle), without regard for any cutouts or variations. Accordingly, the area of the actual room will typically be smaller than the product obtained by multiplying the stated length and width. All dimensions are estimates which will vary with actual construction, and all floor plans, specifications and other development plans are subject to change and will not necessarily accurately reflect the final plans and specifications for the development. The project graphics, renderings and text provided herein are copyrighted works owned by the Developer. All rights reserved. Unauthorized reproduction, display or other dissemination of such materials is strictly prohibited and constitutes copyright infringement. No real estate broker is authorized to make any representations or other statements regarding the projects, and no agreements with, deposits paid to or other arrangements made with any real estate broker are or shall be binding on the Developer. Equal housing opportunity. ®



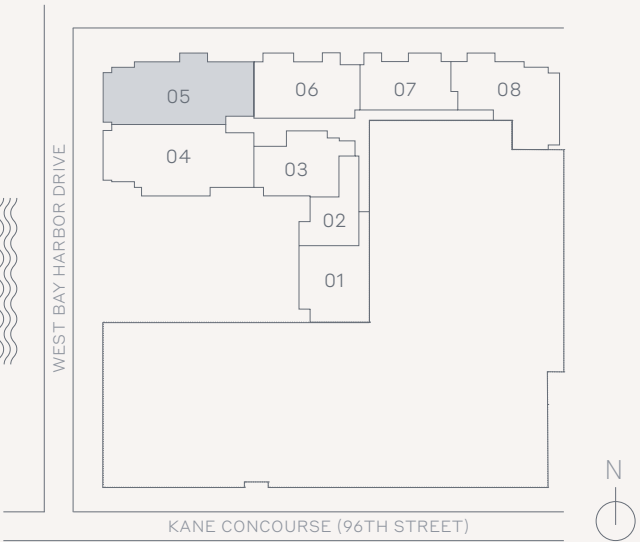
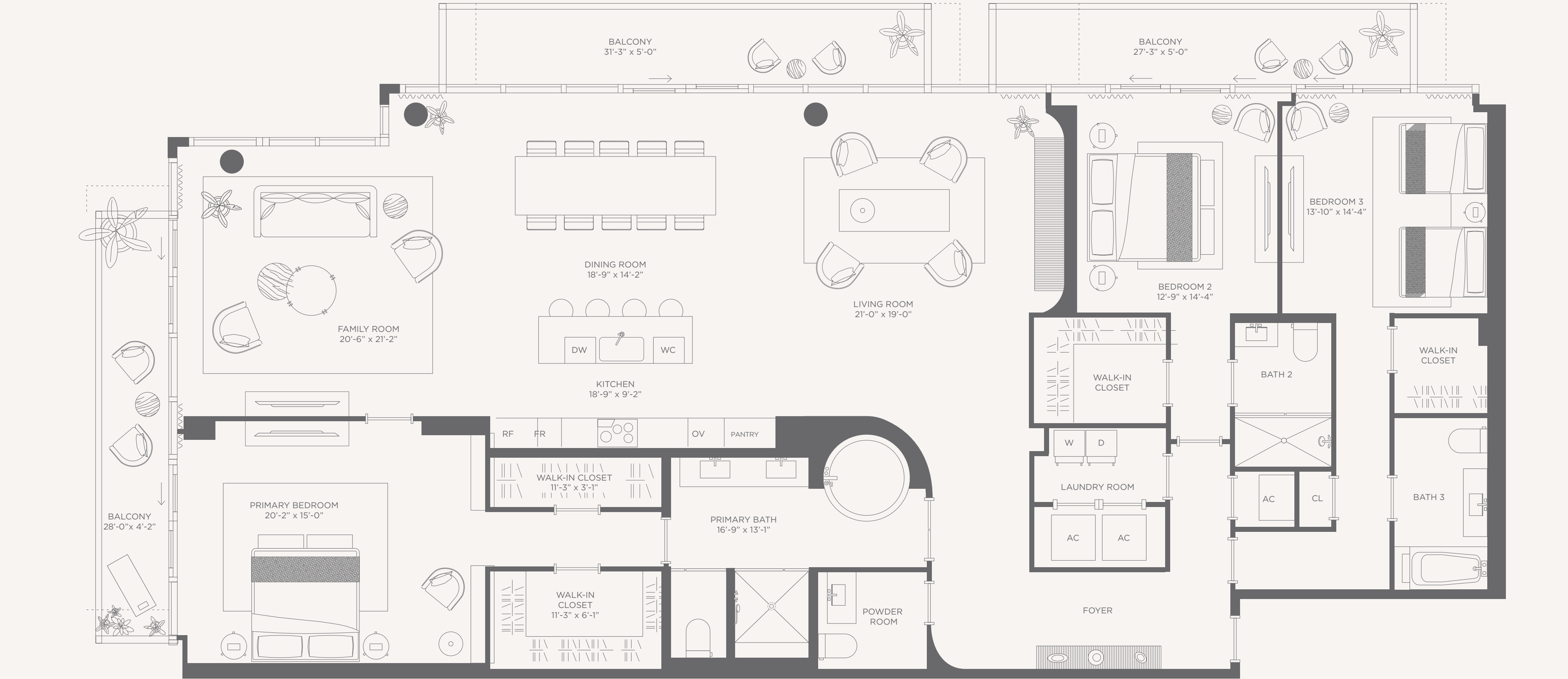
# Residence 05

3 Bedrooms / 3.5 Bathrooms



### Specifications

Interior	3,262 SQ. FT.   303 M²
Exterior	409 SQ. FT.   38 M²
Total	3,671 SQ. FT.   341 M²



This condominium is being developed by 1177 Bay Harbor Islands, LLC, a Delaware limited liability company ("Developer"). Any and all statements, disclosures and/or representations shall be deemed made by Developer and you agree to look solely to Developer with respect to any and all matters relating to the marketing and/or development of the Condominium and with respect to the sales of units in the Condominium. Oral representations cannot be relied upon as correctly stating the representations of the developer. For correct representations, make reference to this brochure and to the documents required by section 718.503, Florida statutes, to be furnished by a developer to a buyer or lessee. These materials are not intended to be an offer to sell, or solicitation to buy a unit in the condominium. Such an offering shall only be made pursuant to the prospectus (offering circular) for the condominium and no statements should be relied upon unless made in the prospectus or in the applicable purchase agreement. In no event shall any solicitation, offer or sale of a unit in the condominium be made in, or to residents of, any state or country in which such activity would be unlawful. Stated square footages and dimensions are measured to the exterior boundaries of the exterior walls and the centerline of interior demising walls and in fact vary from the square footage and dimensions that would be determined by using the description and definition of the "Unit" set forth in the Declaration (which generally only includes the interior airspace between the perimeter walls and excludes all interior structural components and other common elements). This method is generally used in sales materials and is provided to allow a prospective buyer to compare the Units with units in other condominium projects that utilize the same method. Measurements of rooms set forth on this floor plan are generally taken at the farthest points of each given room (as if the room were a perfect rectangle), without regard for any cutouts or variations. Accordingly, the area of the actual room will typically be smaller than the product obtained by multiplying the stated length and width. All dimensions are estimates which will vary with actual construction, and all floor plans, specifications and other development plans are subject to change and will not necessarily accurately reflect the final plans and specifications for the development. The project graphics, renderings and text provided herein are copyrighted works owned by the Developer. All rights reserved. Unauthorized reproduction, display or other dissemination of such materials is strictly prohibited and constitutes copyright infringement. No real estate broker is authorized to make any representations or other statements regarding the projects, and no agreements with, deposits paid to or other arrangements made with any real estate broker are or shall be binding on the Developer. Equal housing opportunity.

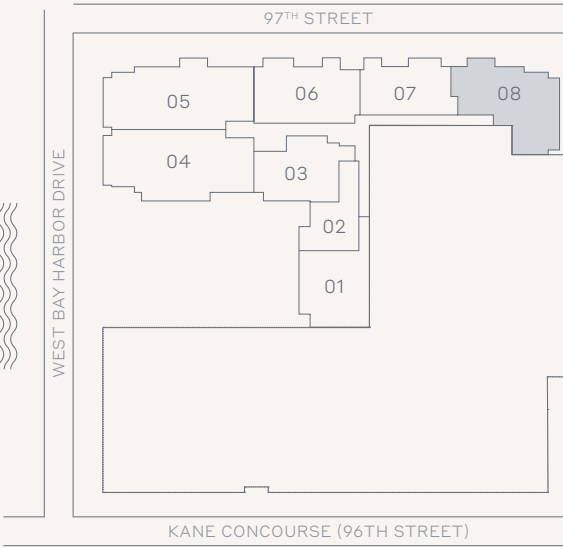
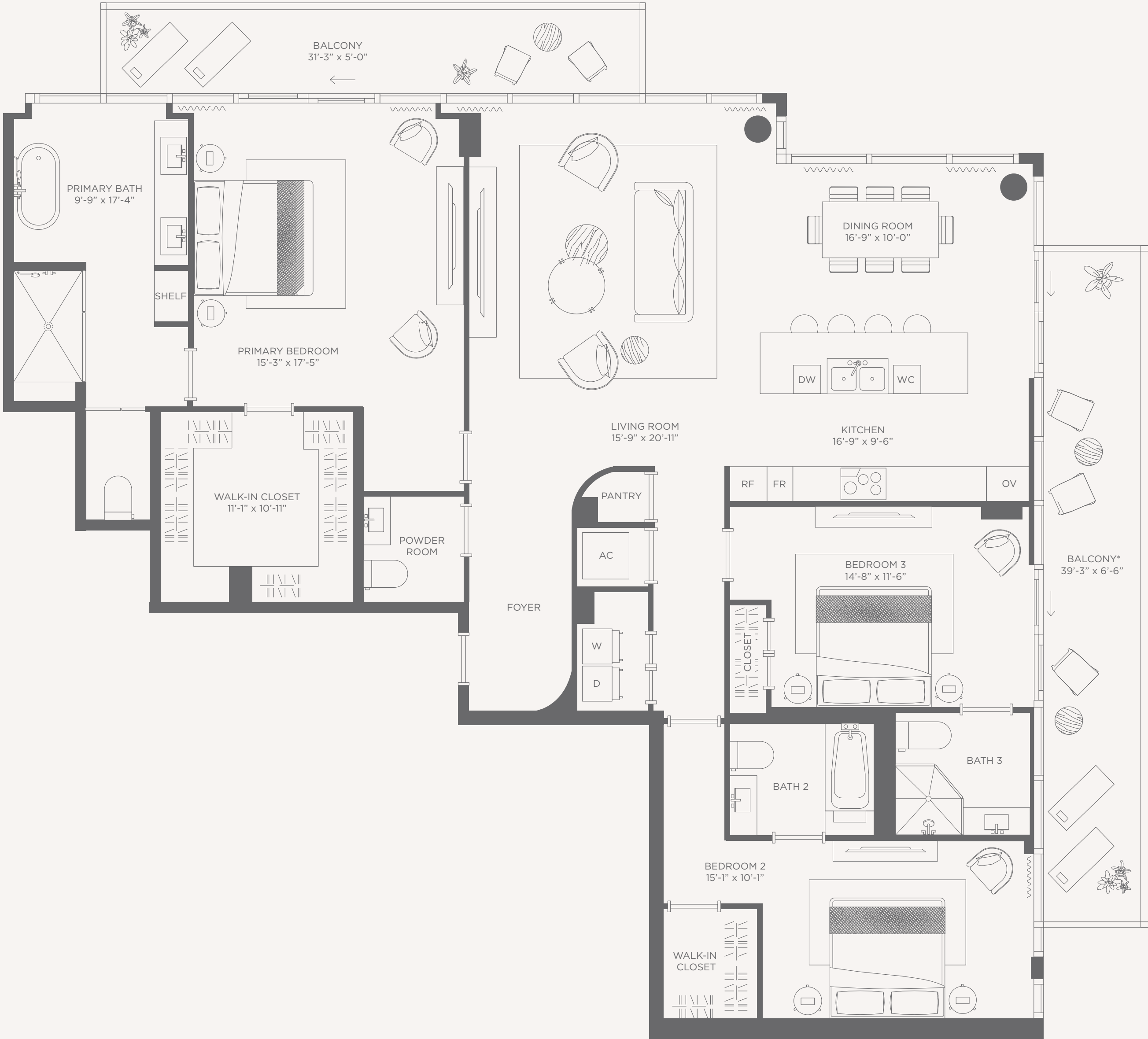
# Residence 08

3 Bedroom / 3.5 Bathrooms

### Specifications

Interior	2,293 SQ. FT.   213 M²
Exterior	*412 SQ. FT.   38 M²
Total	2,705 SQ. FT.   251 M²

*\*Balcony square footage subject to range between 349-599 Sq. Ft. depending on floor*  
*\*Dotted line indicates balcony area at Levels 5 and 7*



This condominium is being developed by 1177 Bay Harbor Islands, LLC, a Delaware limited liability company ("Developer"). Any and all statements, disclosures and/or representations shall be deemed made by Developer and you agree to look solely to Developer with respect to any and all matters relating to the marketing and/or development of the Condominium and with respect to the sales of units in the Condominium. Oral representations cannot be relied upon as correctly stating the representations of the developer. For correct representations, make reference to this brochure and to the documents required by section 718.503, Florida statutes, to be furnished by a developer to a buyer or lessee. These materials are not intended to be an offer to sell, or solicitation to buy a unit in the condominium. Such an offering shall only be made pursuant to the prospectus (offering circular) for the condominium and no statements should be relied upon unless made in the prospectus or in the applicable purchase agreement. In no event shall any solicitation, offer or sale of a unit in the condominium be made in, or to residents of, any state or country in which such activity would be unlawful. Stated square footages and dimensions are measured to the exterior boundaries of the exterior walls and the centerline of interior demising walls and in fact vary from the square footage and dimensions that would be determined by using the description and definition of the "Unit" set forth in the Declaration (which generally only includes the interior airspace between the perimeter walls and excludes all interior structural components and other common elements). This method is generally used in sales materials and is provided to allow a prospective buyer to compare the Units with units in other condominium projects that utilize the same method. Measurements of rooms set forth on this floor plan are generally taken at the farthest points of each given room (as if the room were a perfect rectangle), without regard for any cutouts or variations. Accordingly, the area of the actual room will typically be smaller than the product obtained by multiplying the stated length and width. All dimensions are estimates which will vary with actual construction, and all floor plans, specifications and other development plans are subject to change and will not necessarily accurately reflect the final plans and specifications for the development. The project graphics, renderings and text provided herein are copyrighted works owned by the Developer. All rights reserved. Unauthorized reproduction, display or other dissemination of such materials is strictly prohibited and constitutes copyright infringement. No real estate broker is authorized to make any representations or other statements regarding the project, and no agreements with, deposits paid to or other arrangements made with any real estate broker are or shall be binding on the Developer. Equal housing opportunity.