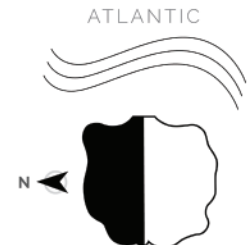
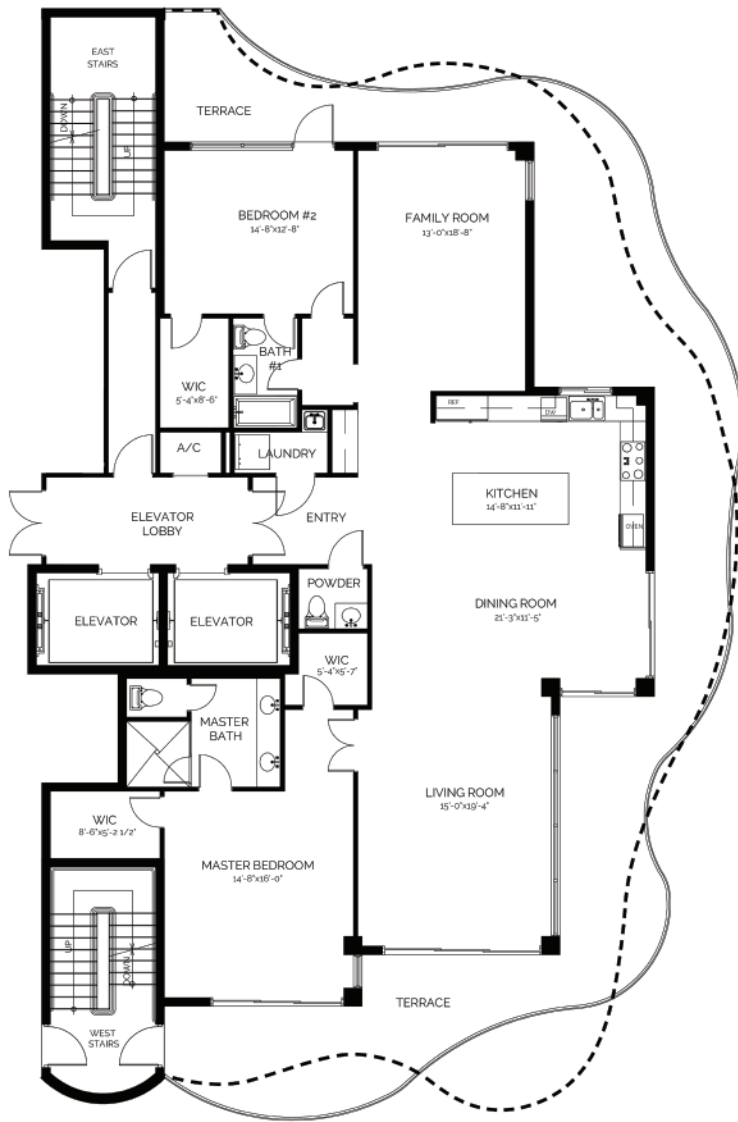


301	501	701	NORTH RESIDENCES	401	601	801
-----	-----	-----	------------------	-----	-----	-----

Unit Area	1,664 square feet
Terrace	842 square feet
<hr/>	
Total	2,506 square feet
2 Bedrooms + Den	
2 Bathrooms	

Unit Area	1,664 square feet
Terrace	843 square feet
<hr/>	
Total	2,507 square feet
2 Bedrooms + Den	
2 Bathrooms	

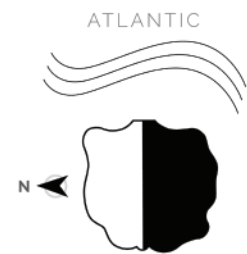


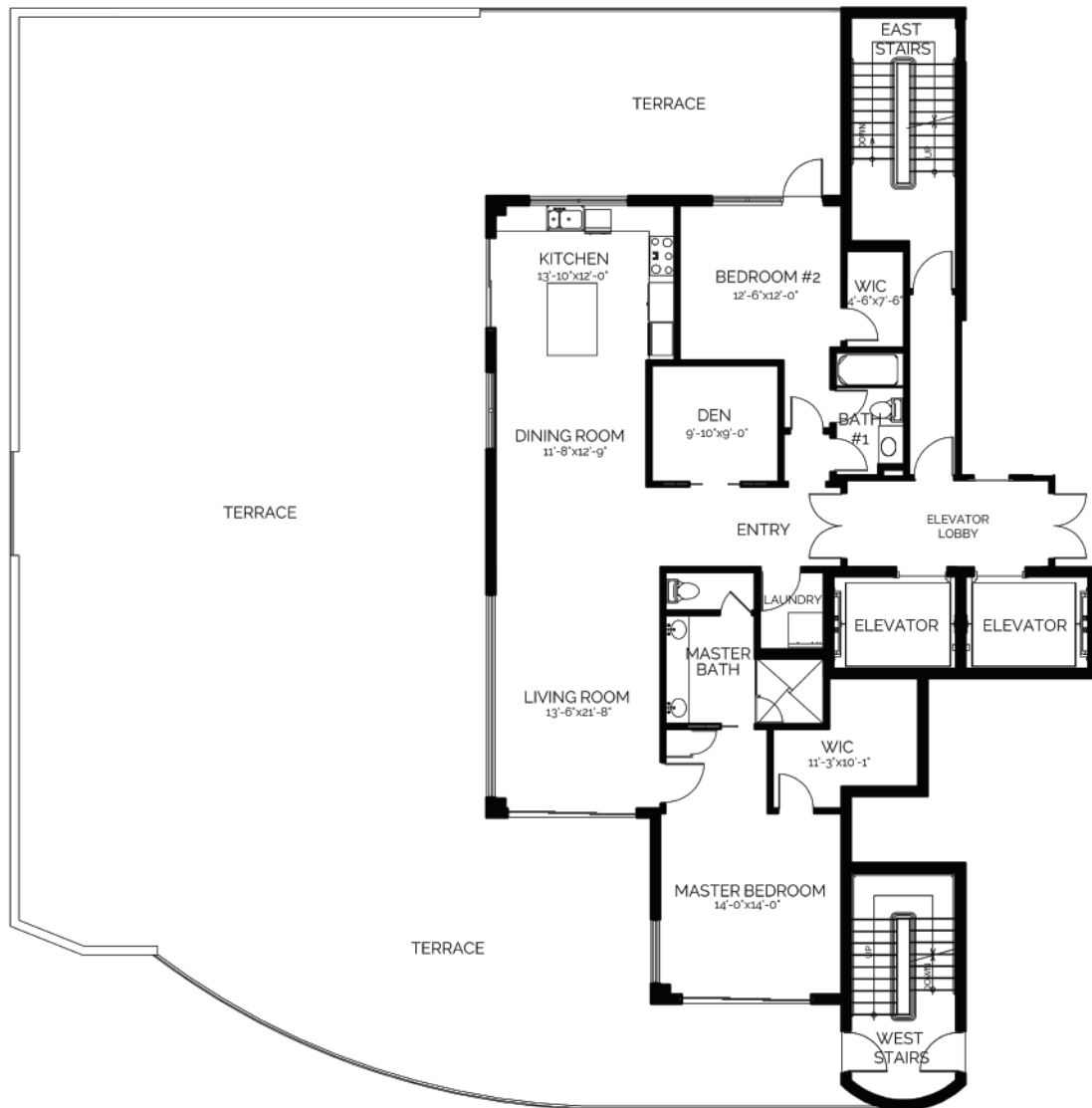


302 502 702 SOUTH RESIDENCES 402 602 802

Unit Area	2,104 square feet
Terrace	909 square feet
<hr/>	
Total	3,013 square feet
3 Bedrooms	
2.5 Bathrooms	

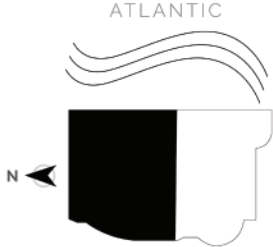
Unit Area	2,104 square feet
Terrace	1,001 square feet
<hr/>	
Total	3,105 square feet
3 Bedrooms	
2.5 Bathrooms	

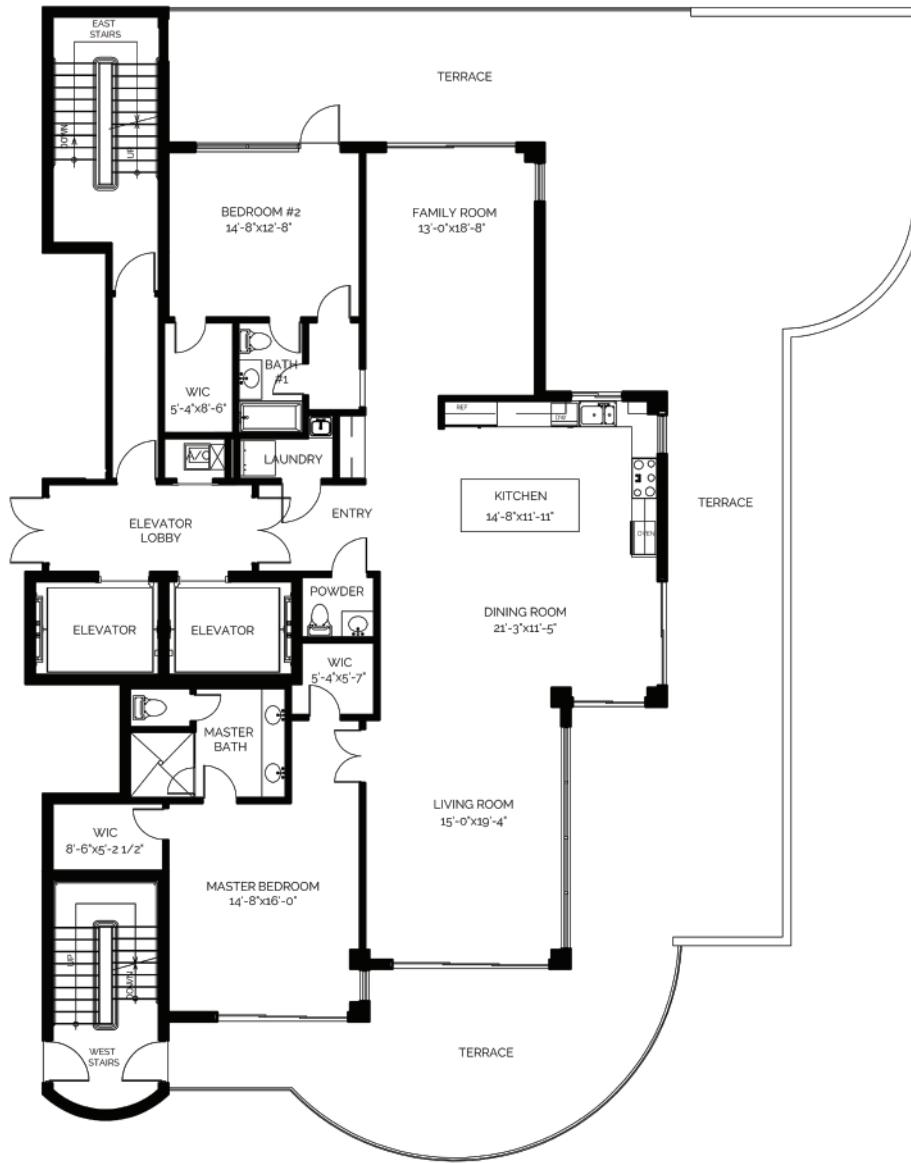




**SECOND FLOOR RESIDENCE** **201**

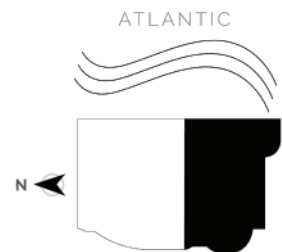
Unit Area	1,664 square feet
Terrace	3,664 square feet
<hr/>	
Total	5,328 square feet
2 Bedrooms + Den	
2 Bathrooms	

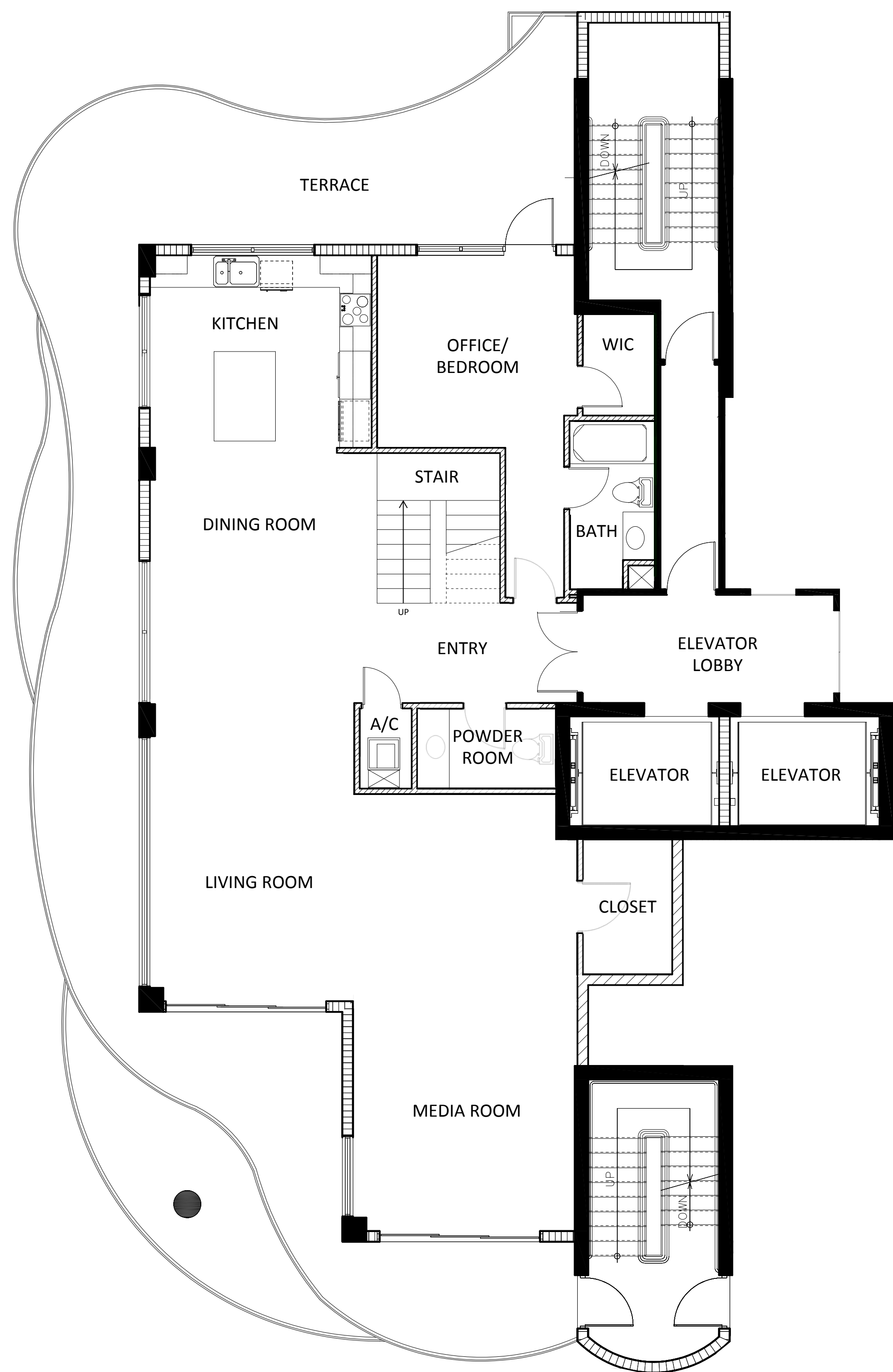




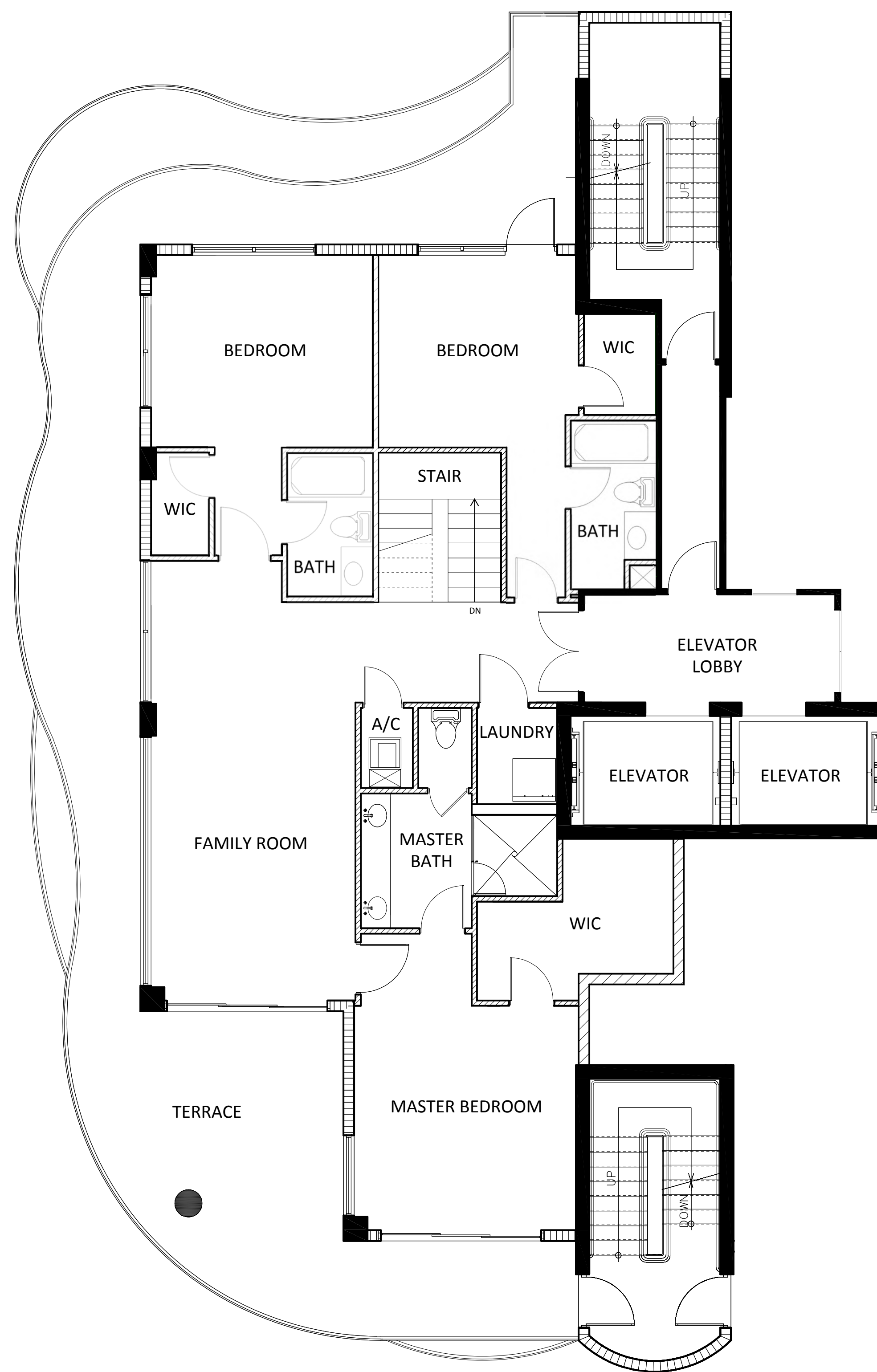
**SECOND FLOOR RESIDENCE** **202**

Unit Area	2,104 square feet
Terrace	2,004 square feet
<hr/>	
Total	4,108 square feet
3 Bedrooms	
2.5 Bathrooms	

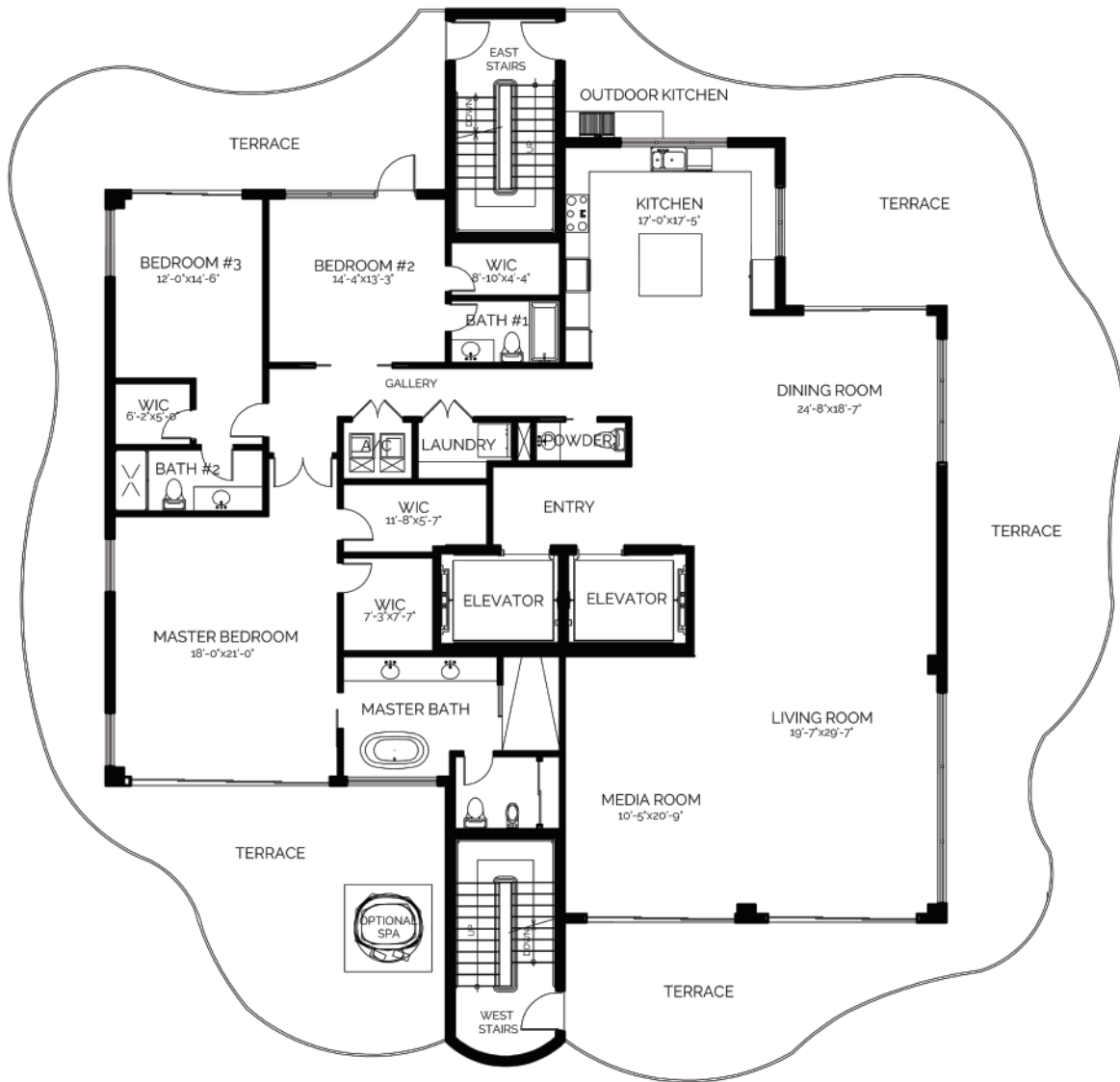




6TH FLOOR

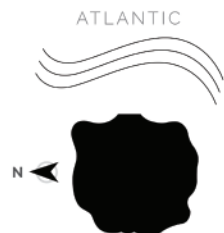


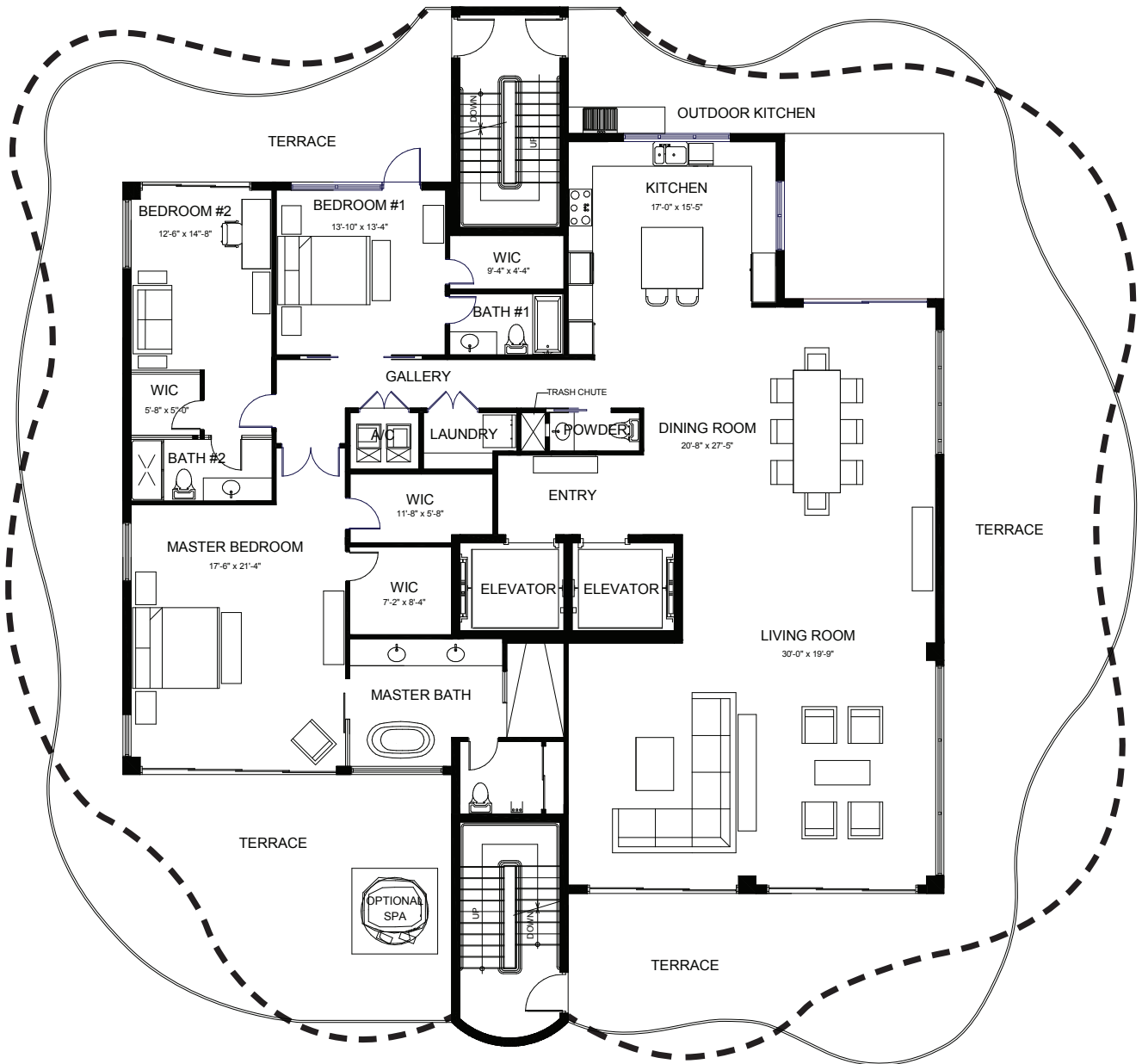
7TH FLOOR



PENTHOUSE 9

Unit Area	3,323 square feet
Terrace	2,336 square feet
<hr/>	
Total	5,659 square feet
3 Bedrooms	
3.5 Bathrooms	





**PENTHOUSE 10**

Unit Area	3,343 square feet
Terrace	2,466 square feet
<b>Total</b>	<b>5,809 square feet</b>
3 Bedrooms	
3.5 Baths	

**PENTHOUSE 11**

Unit Area	3,343 square feet
Terrace	2,368 square feet
<b>Total</b>	<b>5,711 square feet</b>
3 Bedrooms	
3.5 Baths	

