



PARAMOUNT

A WORLD OF LUXURY RESIDENCES AT

MIAMI WORLD CENTER



# MIAMI

*america's city of the future*

1. London
2. New York
3. Singapore
4. Hong Kong
5. Geneva
6. Shanghai
7. Miami
8. Dubai
9. Beijing
10. Paris

## The Knight Frank Global Cities Survey

keeps track of which cities are of most importance to the world's wealthiest people today.

It ranks cities based on four factors: Economic Activity, Quality of Life, Knowledge & Influence and Political Power, as well as taking into account the number of these wealthiest individuals who call each city home.

Knight Frank's The Wealth Report 2014: Global City Survey

13.9<sup>M</sup>  
VISITORS  
A YEAR

39<sup>M</sup>  
FLY THRU  
MIA

4<sup>M</sup>  
CRUISE  
FROM MIA

1000+  
CORPORATE  
HEADQUARTERS

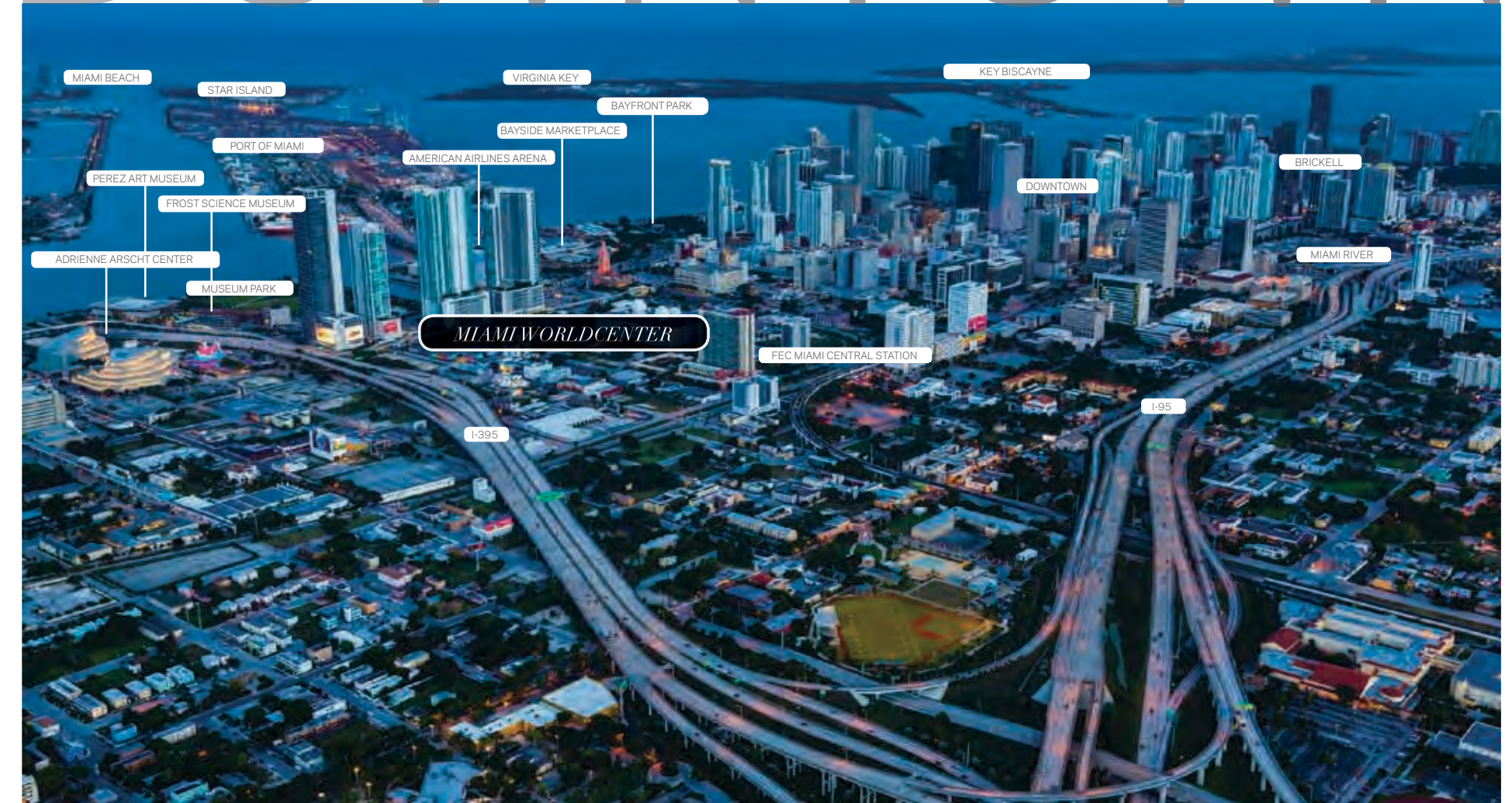
73  
FOREIGN  
CONSULATES

21  
FOREIGN  
TRADE OFFICES

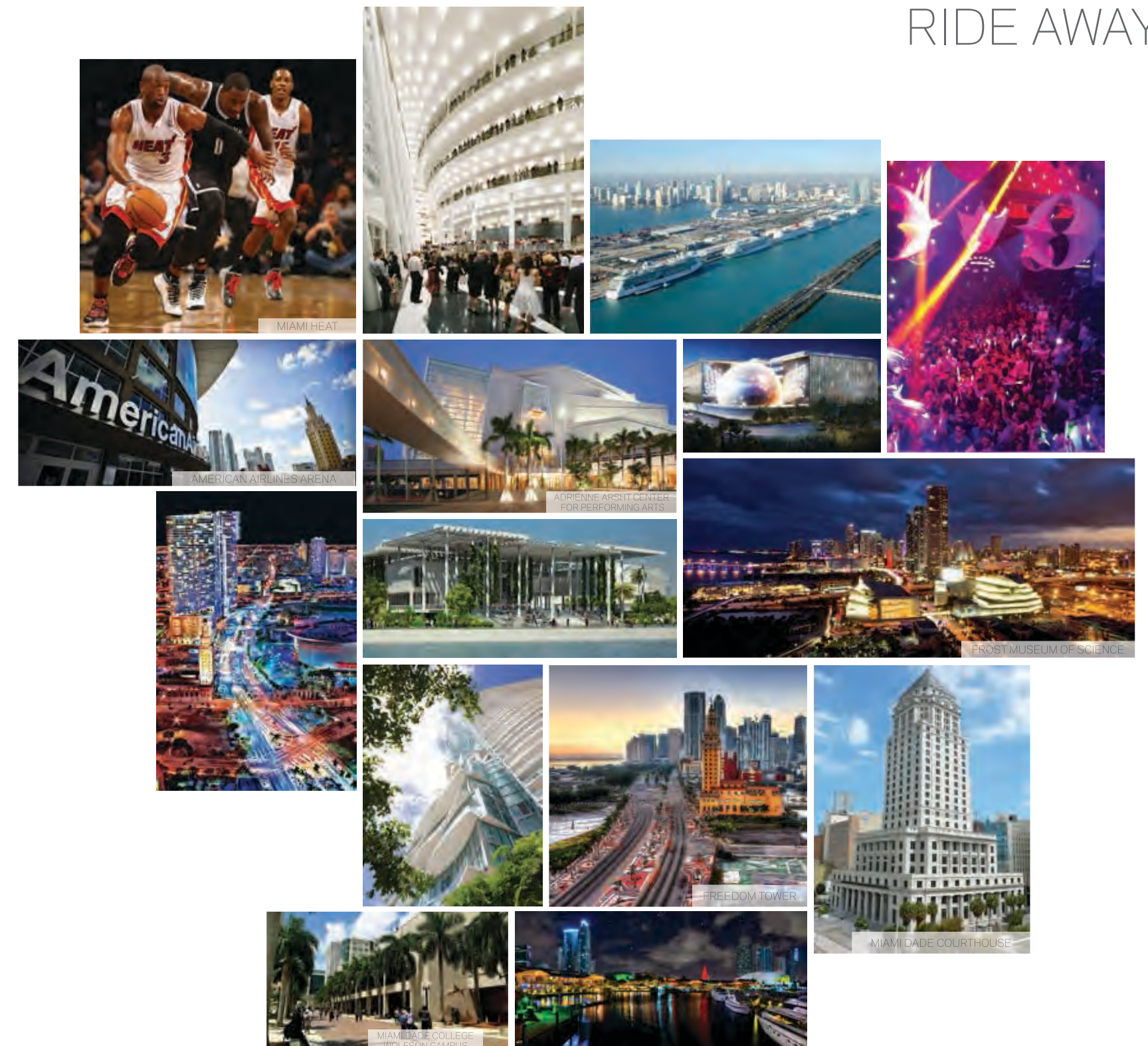
32%<sup>↑</sup>  
FINANCE &  
INSURANCE  
INDUSTRY

## A CITY WITHIN A CITY

# DOWNTOWN



## AN ELEVATOR RIDE AWAY



ARTIST CONCEPTUAL RENDERING. DEVELOPER MAY CHANGE WITHOUT NOTICE.

See Legal Disclaimers on Final Page



A MASTER PLANNED COMMUNITY

# MIAMI WORLD CENTER



**Miami Worldcenter,**  
2nd Largest Development in the U.S.  
30 acres surrounded by over  
\$3 billion of new public and private  
projects including:

mass transit  
museums  
parks  
sports venues  
entertainment

600,000 sq. ft. of convention space  
The Mall at Miami Worldcenter anchored  
by Bloomingdale's and Macy's.

&

**A SIGNATURE RESIDENTIAL TOWER**

Exclusive location and right to create the  
premiere luxury residential experience at  
Miami Worldcenter.

## THE CITY'S NEWEST HOTSPOT





# THE MALL AT MIAMI WORLD CENTER

The Forbes Company & Taubman Properties

750,000 sq. ft. mall  
anchored by Bloomingdale's & Macy's



DESIGNED TO BE THE CENTERPIECE OF MIAMI'S URBAN LANDSCAPE





# PARAMOUNT

A SIGNATURE RESIDENTIAL TOWER



**PARAMOUNT Miami Worldcenter**, will stand 700-feet above the phenomenon destined to be the new epicenter of Miami.

Featuring over 470 of the most luxurious and unique residences in Miami, PARAMOUNT will change urban living. Residents will thrive in the heart of the magic city, with every desire just an elevator ride away.





# Features

Each Residence includes:  
Private Elevator  
Private Foyer  
10-Foot Ceilings  
Outdoor Living Rooms  
Full Laundry Room  
Convertible Den



## URBAN LIVING REINVENTED



## *Outdoor Living Rooms*



# Amenities

## SKYVIEW ROOFTOP DECK

- Skyview Lounge
- Sunrise Pool
- Firepit
- Infinity Pool
- Sundeck
- Yoga Deck



## 9TH FLOOR AMENITIES

- |                   |                                  |
|-------------------|----------------------------------|
| Entertainment     | Spa/Salon                        |
| Conservatory      | Treatment Rooms                  |
| Recreation Lounge | Nail/Hair Bar                    |
| Outdoor Lounge    | Outdoor Bath Gardens             |
| Sports Center     | Play Center                      |
| Fitness Center    | Kids Play Room                   |
| Boxing Studio     | Social Lounge (Pool Table, Etc.) |
| Aerobics Area     | Jam Room with Recording Studio   |



*Countless Possibilities  
for the Ultimate  
Lifestyle*

## ROOFDECK AMENITIES

- |                  |                      |
|------------------|----------------------|
| Resort Pool      | Floating Lounge Pods |
| Walking Paths    | Sports Center        |
| Picnic/BBQ Areas |                      |



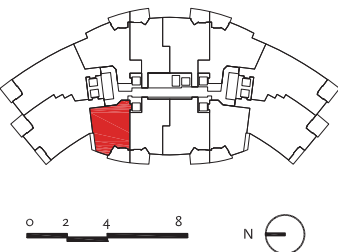


# 1 Bedroom + Den Residences

Residence A1

1 Bedroom + Den | 2 Bath

Total: 1,491 sq. ft. | 138 m<sup>2</sup>  
Interior: 1,294 sq. ft. | 120 m<sup>2</sup>  
Outdoor: 197 sq. ft. | 18 m<sup>2</sup>

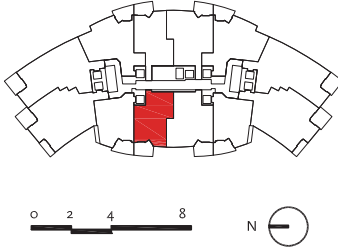
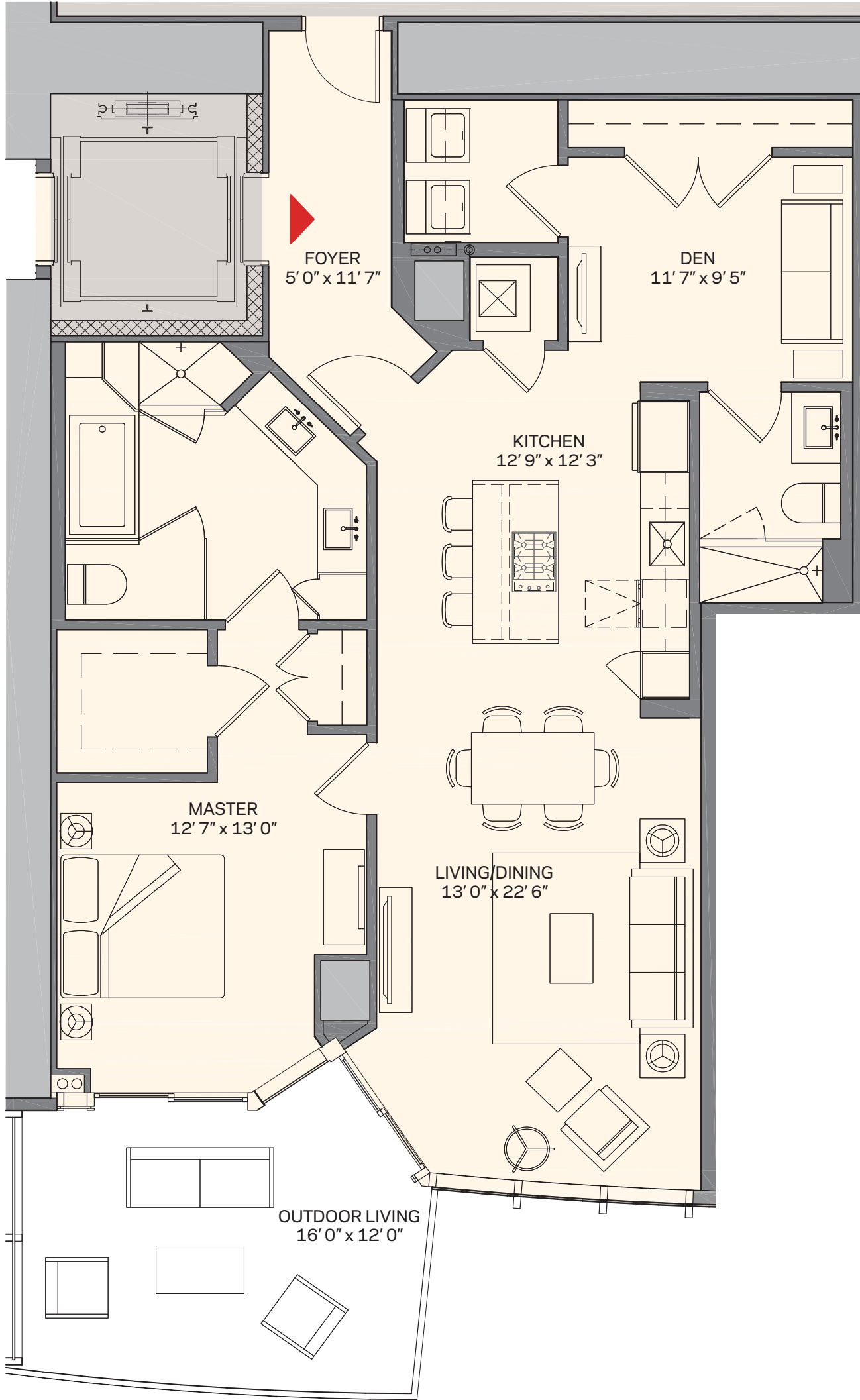


These drawings are conceptual only and are for the convenience of reference. They should not be relied upon as representations, express or implied, of the final detail of the residences. Units shown are examples of unit types and may not depict actual units. Stated square footages are ranges for a particular unit type and are measured to the exterior boundaries of the exterior walls and the centerline of interior demising walls and in fact vary from the area that would be determined by using the description and definition of the "Unit" set forth in the Declaration (which generally only includes the interior airspace between the perimeter walls and excludes interior structural components). Note that measurements of rooms set forth on this floor plan are generally taken at the greatest points of each given room (as if the room were a perfect rectangle), without regard for any cutouts. Accordingly, the area of the actual room will typically be smaller than the product obtained by multiplying the stated length times width. All dimensions are approximate and may vary with actual construction, and all floor plans and development plans are subject to change.

Residence B1

1 Bedroom + Den | 2 Bath

Total: 1,521 sq. ft. | 141 m<sup>2</sup>  
Interior: 1,318 sq. ft. | 122 m<sup>2</sup>  
Outdoor: 205 sq. ft. | 19 m<sup>2</sup>



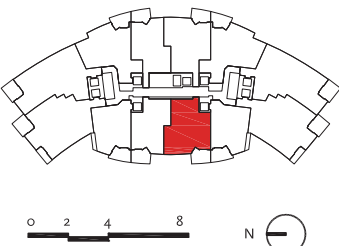
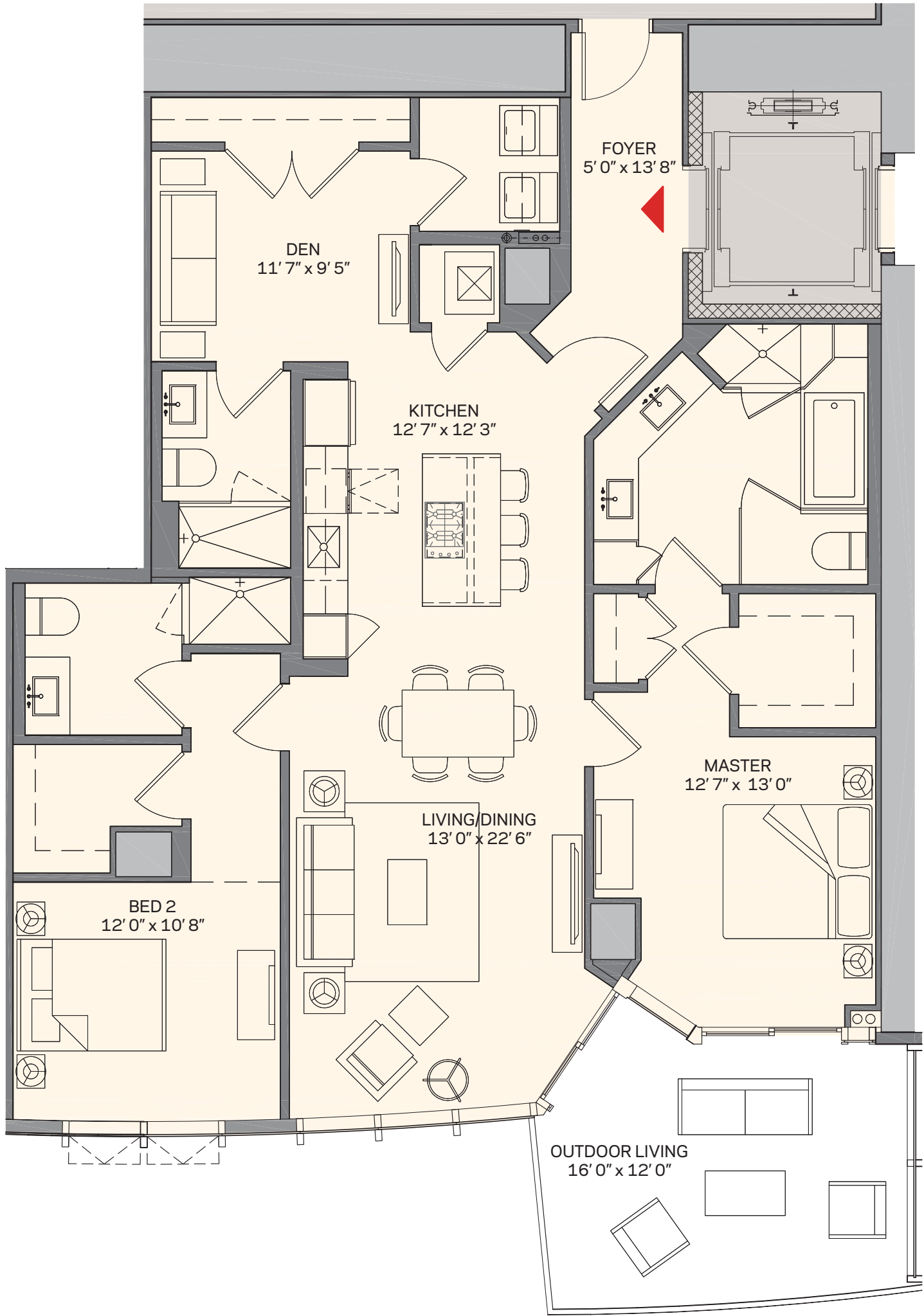
These drawings are conceptual only and are for the convenience of reference. They should not be relied upon as representations, express or implied, of the final detail of the residences. Units shown are examples of unit types and may not depict actual units. Stated square footages are ranges for a particular unit type and are measured to the exterior boundaries of the exterior walls and the centerline of interior demising walls and in fact vary from the area that would be determined by using the description and definition of the "Unit" set forth in the Declaration (which generally only includes the interior airspace between the perimeter walls and excludes interior structural components). Note that measurements of rooms set forth on this floor plan are generally taken at the greatest points of each given room (as if the room were a perfect rectangle), without regard for any cutouts. Accordingly, the area of the actual room will typically be smaller than the product obtained by multiplying the stated length times width. All dimensions are approximate and may vary with actual construction, and all floor plans and development plans are subject to change.



# 2 Bedroom + Den Residences

Residence C1

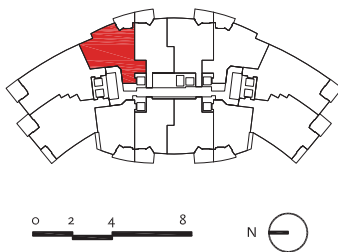
2 Bedroom + Den | 3 Bath  
Total: 1,835 sq. ft. | 170 m<sup>2</sup>  
Interior: 1,630 sq. ft. | 151 m<sup>2</sup>  
Outdoor: 205 sq. ft. | 19 m<sup>2</sup>



These drawings are conceptual only and are for the convenience of reference. They should not be relied upon as representations, express or implied, of the final detail of the residences. Units shown are examples of unit types and may not depict actual units. Stated square footages are ranges for a particular unit type and are measured to the exterior boundaries of the exterior walls and the centerline of interior demising walls and in fact vary from the area that would be determined by using the description and definition of the "Unit" set forth in the Declaration (which generally only includes the interior airspace between the perimeter walls and excludes interior structural components). Note that measurements of rooms set forth on this floor plan are generally taken at the greatest points of each given room (as if the room were a perfect rectangle), without regard for any cutouts. Accordingly, the area of the actual room will typically be smaller than the product obtained by multiplying the stated length times width. All dimensions are approximate and may vary with actual construction, and all floor plans and development plans are subject to change.

Residence D1

2 Bedroom + Den | 3 Bath  
Total: 1,952 sq. ft. | 181 m<sup>2</sup>  
Interior: 1,753 sq. ft. | 163 m<sup>2</sup>  
Outdoor: 199 sq. ft. | 18 m<sup>2</sup>



These drawings are conceptual only and are for the convenience of reference. They should not be relied upon as representations, express or implied, of the final detail of the residences. Units shown are examples of unit types and may not depict actual units. Stated square footages are ranges for a particular unit type and are measured to the exterior boundaries of the exterior walls and the centerline of interior demising walls and in fact vary from the area that would be determined by using the description and definition of the "Unit" set forth in the Declaration (which generally only includes the interior airspace between the perimeter walls and excludes interior structural components). Note that measurements of rooms set forth on this floor plan are generally taken at the greatest points of each given room (as if the room were a perfect rectangle), without regard for any cutouts. Accordingly, the area of the actual room will typically be smaller than the product obtained by multiplying the stated length times width. All dimensions are approximate and may vary with actual construction, and all floor plans and development plans are subject to change.



# 3 Bedroom + Den Residences

Residence E1

3 Bedroom + Den | 4 Bath

Total:	2,611 sq. ft.		243 m <sup>2</sup>
Interior:	2,320 sq. ft.		216 m <sup>2</sup>
Outdoor:	291 sq. ft.		27 m <sup>2</sup>



These drawings are conceptual only and are for the convenience of reference. They should not be relied upon as representations, express or implied, of the final detail of the residences. Units shown are examples of unit types and may not depict actual units. Stated square footages are ranges for a particular unit type and are measured to the exterior boundaries of the exterior walls and the centerline of interior demising walls and in fact vary from the area that would be determined by using the description and definition of the "Unit" set forth in the Declaration (which generally only includes the interior airspace between the perimeter walls and excludes interior structural components). Note that measurements of rooms set forth on this floor plan are generally taken at the greatest points of each given room (as if the room were a perfect rectangle), without regard for any cutouts. Accordingly, the area of the actual room will typically be smaller than the product obtained by multiplying the stated length times width. All dimensions are approximate and may vary with actual construction, and all floor plans and development plans are subject to change.

Residence F1

3 Bedroom + Den | 4 Bath

Total:	2,578 sq. ft.		240 m <sup>2</sup>
Interior:	2,376 sq. ft.		221m <sup>2</sup>
Outdoor:	202 sq. ft.		19 m <sup>2</sup>



These drawings are conceptual only and are for the convenience of reference. They should not be relied upon as representations, express or implied, of the final detail of the residences. Units shown are examples of unit types and may not depict actual units. Stated square footages are ranges for a particular unit type and are measured to the exterior boundaries of the exterior walls and the centerline of interior demising walls and in fact vary from the area that would be determined by using the description and definition of the "Unit" set forth in the Declaration (which generally only includes the interior airspace between the perimeter walls and excludes interior structural components). Note that measurements of rooms set forth on this floor plan are generally taken at the greatest points of each given room (as if the room were a perfect rectangle), without regard for any cutouts. Accordingly, the area of the actual room will typically be smaller than the product obtained by multiplying the stated length times width. All dimensions are approximate and may vary with actual construction, and all floor plans and development plans are subject to change.