

01NW

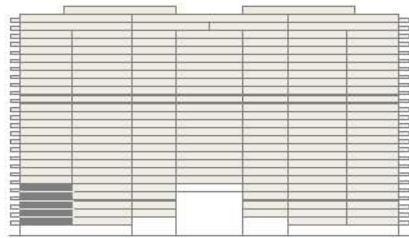
2nd-6th Floor

2 BEDROOMS - 2 BATHROOMS

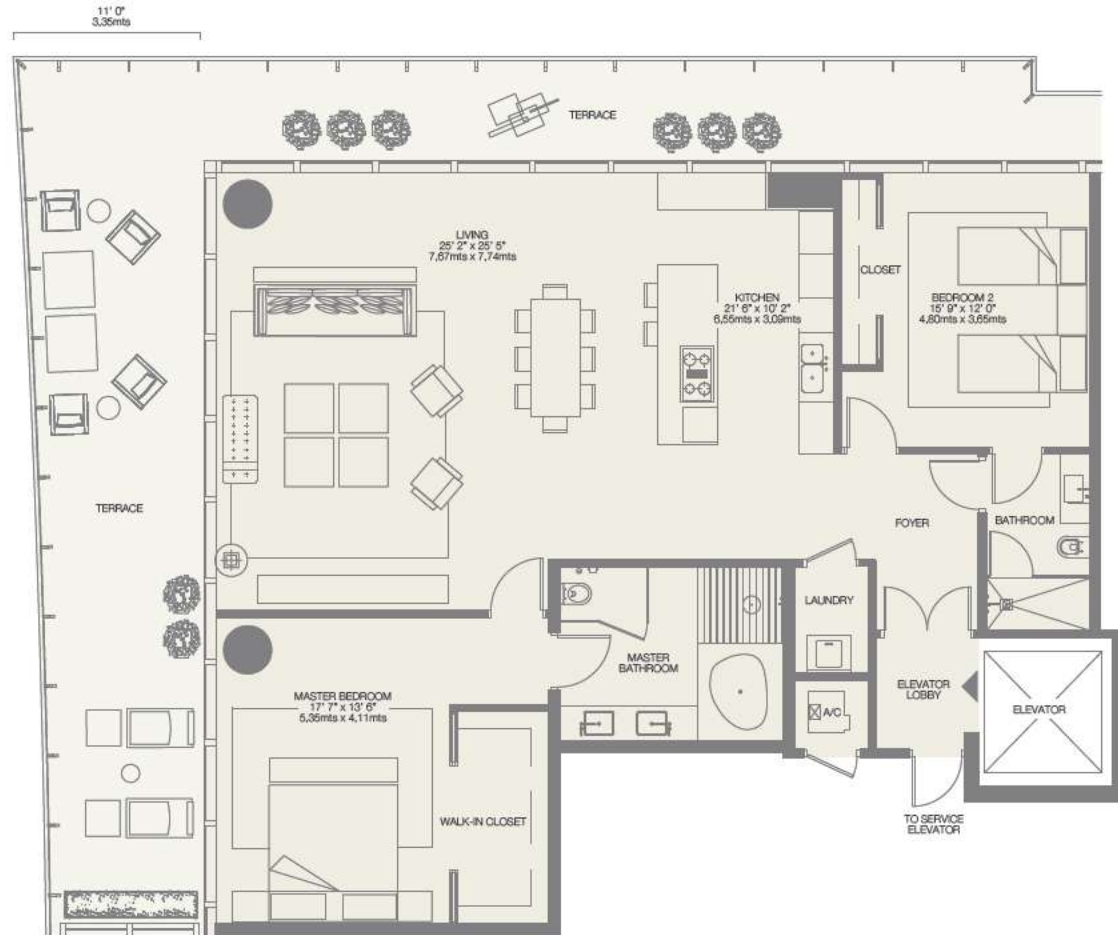
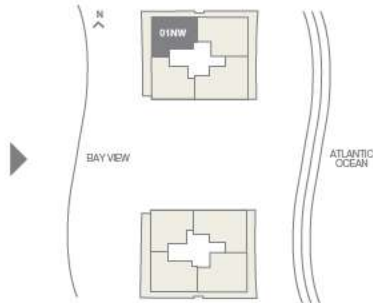
RESIDENCE 1,917 sq. ft. 178 sq. mt.

TERRACE 795 sq. ft. 74 sq. mt.

Total 2,712 sq. ft. 252 sq. mt.



WEST VIEW



Stated dimensions are measured to the exterior boundaries of the exterior walls and the centerline of interior demising walls and in fact vary from the dimensions that would be determined by using the description and definition of the "Unit" set forth in the Declaration (which generally only includes the interior airspace between the perimeter walls and excludes interior structural components). For the square footage of the "Unit" calculated in the manner set forth in the Declaration, see Exhibit "3" to the Declaration. Additionally, measurements of rooms set forth on any floor plan are generally taken at the greatest points of each given room (as if the room were a perfect rectangle), without regard for any cutouts. Accordingly, the area of the actual room will typically be smaller than the product obtained by multiplying the stated length times width. All dimensions are approximate, and all floor plans and development plans are subject to change.

01SW

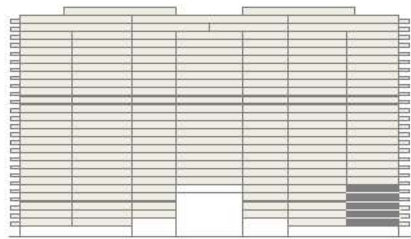
2nd-6th Floor

2 BEDROOMS - 2 BATHROOMS

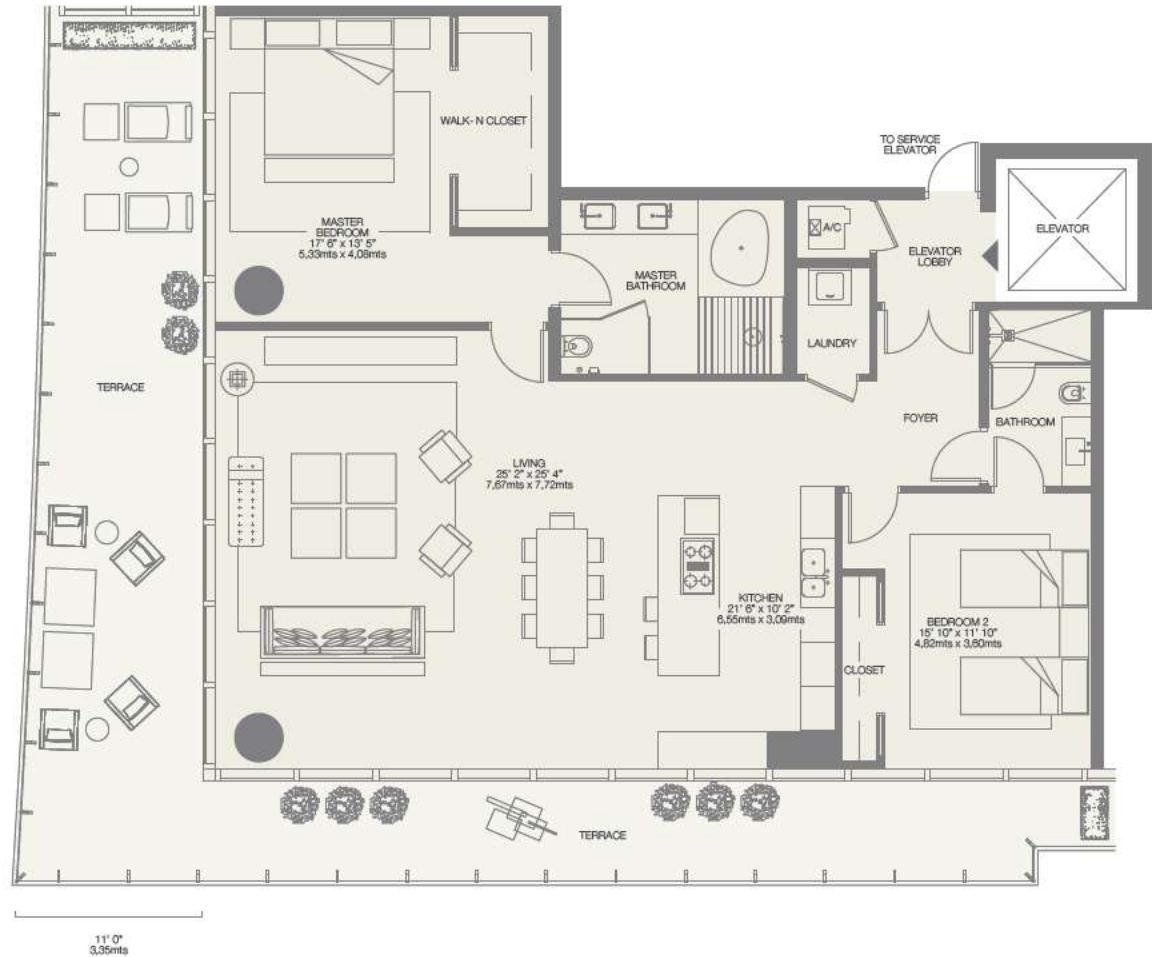
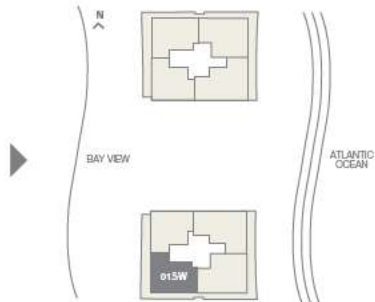
RESIDENCE 1,917 sq. ft. 178 sq. mt.

TERRACE 795 sq. ft. 74 sq. mt.

Total 2,712 sq. ft. 252 sq. mt.



WEST VIEW



Stated dimensions are measured to the exterior boundaries of the exterior walls and the centerline of interior demising walls and in fact vary from the dimensions that would be determined by using the description and definition of the "Unit" set forth in the Declaration (which generally only includes the interior airspace between the perimeter walls and excludes interior structural components). For the square footage of the "Unit" calculated in the manner set forth in the Declaration, see Exhibit "3" to the Declaration. Additionally, measurements of rooms set forth on any floor plan are generally taken at the greatest points of each given room (as if the room were a perfect rectangle), without regard for any cutouts. Accordingly, the area of the actual room will typically be smaller than the product obtained by multiplying the stated length times width. All dimensions are approximate, and all floor plans and development plans are subject to change.

O1NE

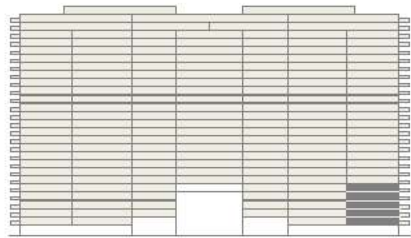
2nd-6th Floor

2 BEDROOMS - 2 1/2 BATHROOMS

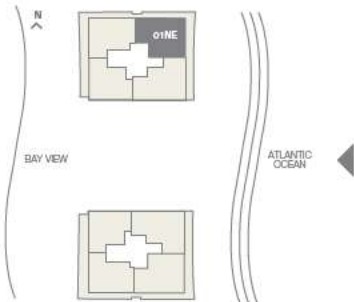
RESIDENCE 2,268 sq. ft. 210 sq. mt.

TERRACE 800 sq. ft. 74 sq. mt.

Total 3,068 sq. ft. 284 sq. mt.



EAST VIEW



Stated dimensions are measured to the exterior boundaries of the exterior walls and the centerline of interior demising walls and in fact vary from the dimensions that would be determined by using the description and definition of the "Unit" set forth in the Declaration (which generally only includes the interior airspace between the perimeter walls and excludes interior structural components). For the square footage of the "Unit" calculated in the manner set forth in the Declaration, see Exhibit "3" to the Declaration. Additionally, measurements of rooms set forth on any floor plan are generally taken at the greatest points of each given room (as if the room were a perfect rectangle), without regard for any cutouts. Accordingly, the area of the actual room will typically be smaller than the product obtained by multiplying the stated length times width. All dimensions are approximate, and all floor plans and development plans are subject to change.

O1SE

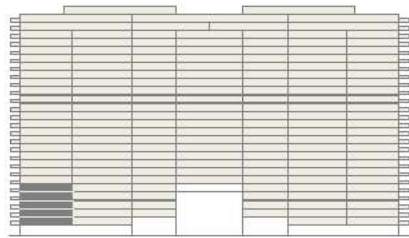
2nd-6th Floor

2 BEDROOMS - 2 1/2 BATHROOMS

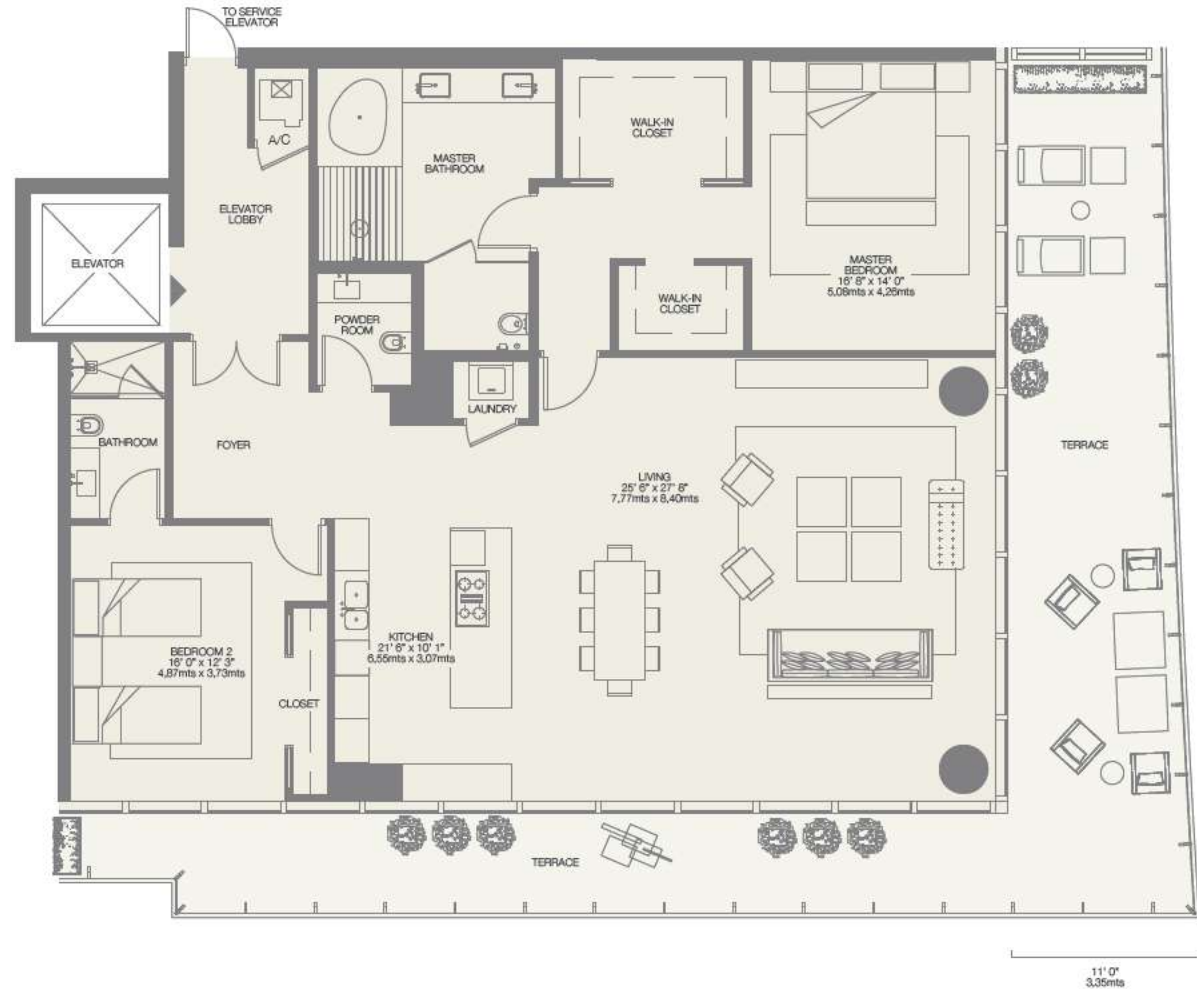
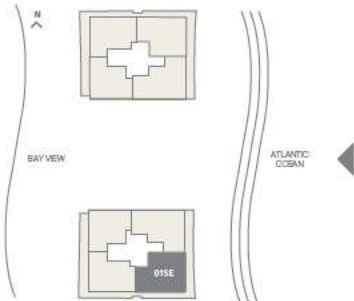
RESIDENCE 2,268 sq.ft. 210 sq.mt.

TERRACE 800 sq.ft. 74 sq.mt.

Total 3,068 sq.ft. 284 sq.mt.



EAST VIEW



Stated dimensions are measured to the exterior boundaries of the exterior walls and the centerline of interior demising walls and in fact vary from the dimensions that would be determined by using the description and definition of the "Unit" set forth in the Declaration (which generally only includes the interior airspace between the perimeter walls and excludes interior structural components). For the square footage of the "Unit" calculated in the manner set forth in the Declaration, see Exhibit "3" to the Declaration. Additionally, measurements of rooms set forth on any floor plan are generally taken at the greatest points of each given room (as if the room were a perfect rectangle), without regard for any cutouts. Accordingly, the area of the actual room will typically be smaller than the product obtained by multiplying the stated length times width. All dimensions are approximate, and all floor plans and development plans are subject to change.

O2NE

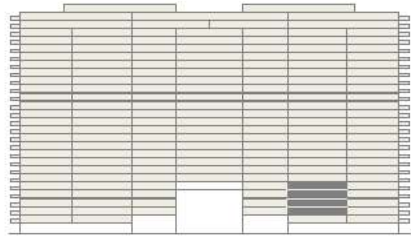
3rd-6th Floor

2 BEDROOMS - 3 BATHROOMS - DEN

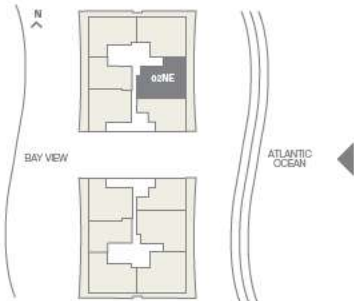
RESIDENCE 2,130 sq. ft. 198 sq. mt.

TERRACE 425 sq. ft. 40 sq. mt.

Total 2,555 sq. ft. 238 sq. mt.



EAST VIEW



Stated dimensions are measured to the exterior boundaries of the exterior walls and the centerline of interior demising walls and in fact vary from the dimensions that would be determined by using the description and definition of the "Unit" set forth in the Declaration (which generally only includes the interior airspace between the perimeter walls and excludes interior structural components). For the square footage of the "Unit" calculated in the manner set forth in the Declaration, see Exhibit "3" to the Declaration. Additionally, measurements of rooms set forth on any floor plan are generally taken at the greatest points of each given room (as if the room were a perfect rectangle), without regard for any cutouts. Accordingly, the area of the actual room will typically be smaller than the product obtained by multiplying the stated length times width. All dimensions are approximate, and all floor plans and development plans are subject to change.

O2SE

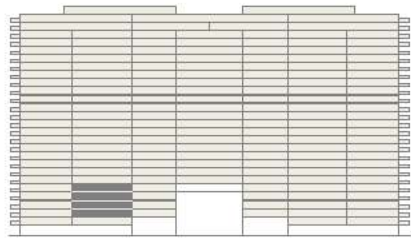
3rd-6th Floor

2 BEDROOMS - 3 BATHROOMS - DEN

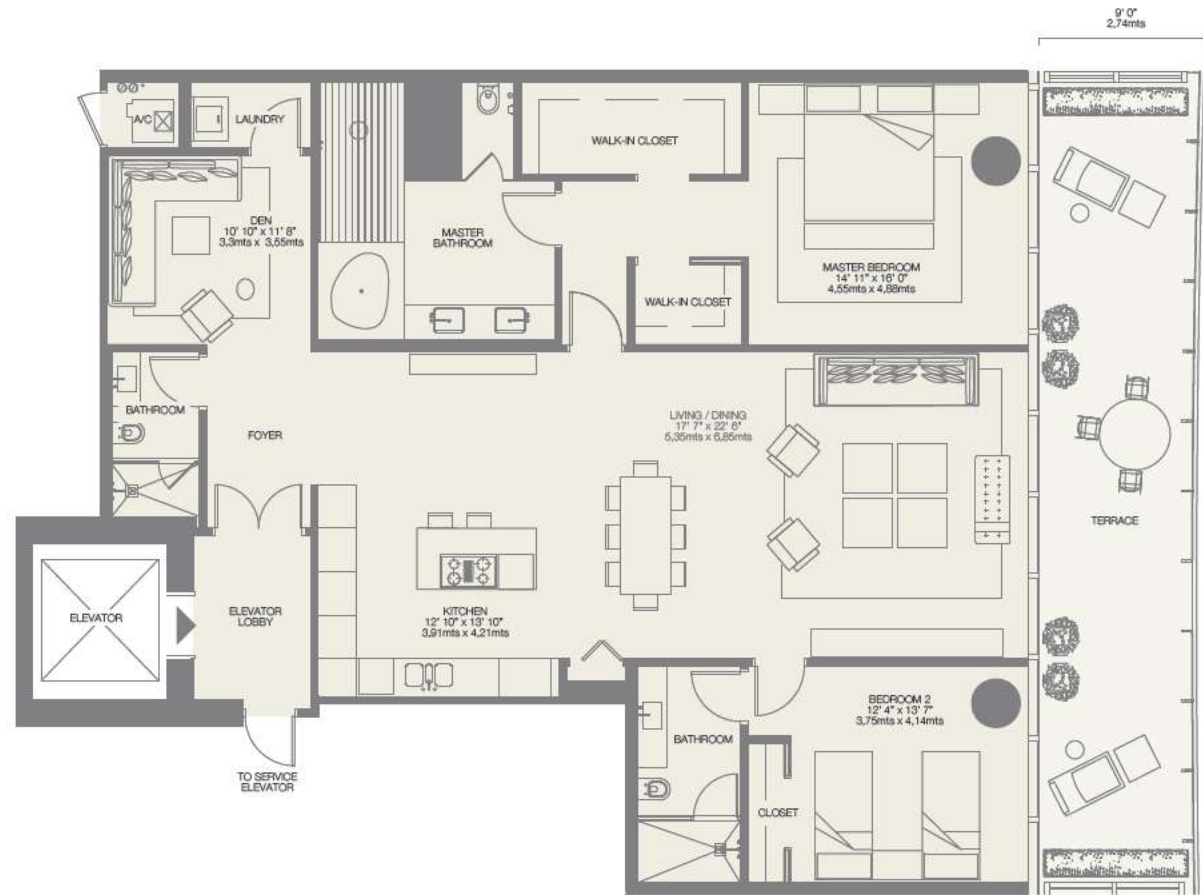
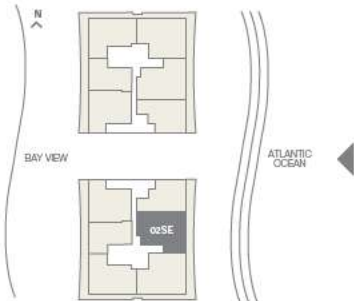
RESIDENCE 2,130 sq.ft. 198 sq.mt.

TERRACE 425 sq.ft. 40 sq.mt.

Total 2,555 sq.ft. 238 sq.mt.



EAST VIEW



Stated dimensions are measured to the exterior boundaries of the exterior walls and the centerline of interior demising walls and in fact vary from the dimensions that would be determined by using the description and definition of the "Unit" set forth in the Declaration (which generally only includes the interior airspace between the perimeter walls and excludes interior structural components). For the square footage of the "Unit" calculated in the manner set forth in the Declaration, see Exhibit "3" to the Declaration. Additionally, measurements of rooms set forth on any floor plan are generally taken at the greatest points of each given room (as if the room were a perfect rectangle), without regard for any cutouts. Accordingly, the area of the actual room will typically be smaller than the product obtained by multiplying the stated length times width. All dimensions are approximate, and all floor plans and development plans are subject to change.

03NE

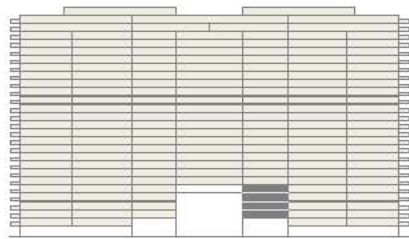
3rd-6th Floor

1 BEDROOMS - 2 BATHROOMS - DEN

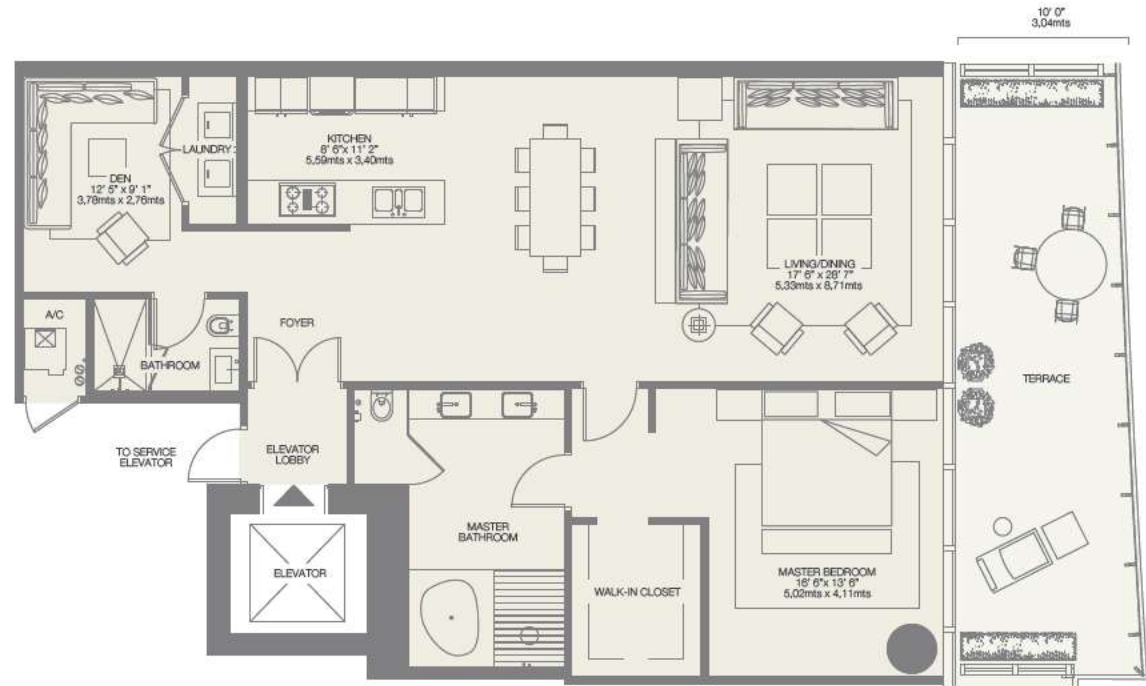
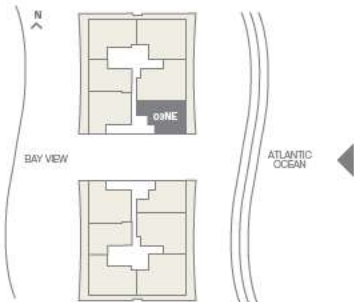
RESIDENCE 1,603 sq. ft. 149 sq. mt.

TERRACE 355 sq. ft. 33 sq. mt.

Total 1,958 sq. ft. 182 sq. mt.



EAST VIEW



Stated dimensions are measured to the exterior boundaries of the exterior walls and the centerline of interior demising walls and in fact vary from the dimensions that would be determined by using the description and definition of the "Unit" set forth in the Declaration (which generally only includes the interior airspace between the perimeter walls and excludes interior structural components). For the square footage of the "Unit" calculated in the manner set forth in the Declaration, see Exhibit "3" to the Declaration. Additionally, measurements of rooms set forth on any floor plan are generally taken at the greatest points of each given room (as if the room were a perfect rectangle), without regard for any cutouts. Accordingly, the area of the actual room will typically be smaller than the product obtained by multiplying the stated length times width. All dimensions are approximate, and all floor plans and development plans are subject to change.

03SE

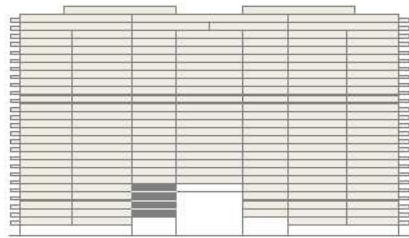
3rd-6th Floor

1 BEDROOMS - 2 BATHROOMS - DEN

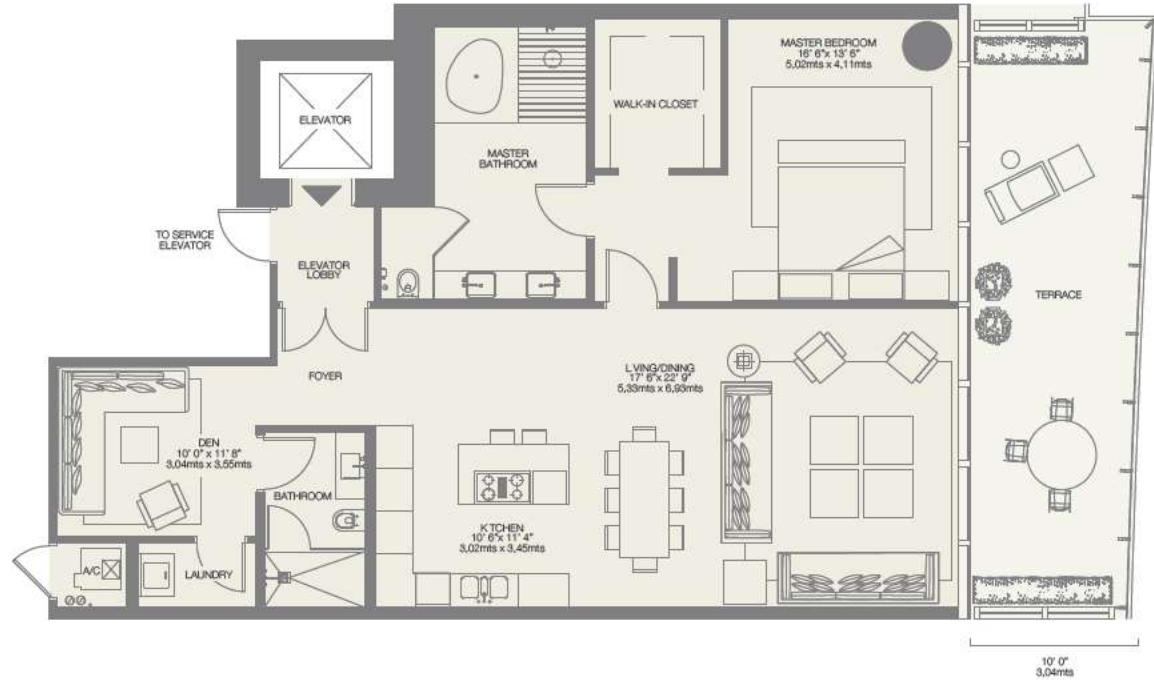
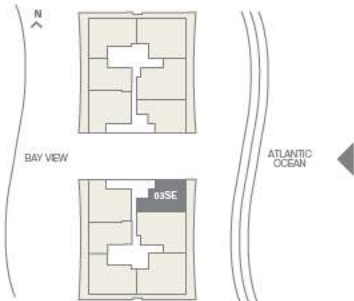
RESIDENCE 1,549 sq.ft. 144 sq. mt.

TERRACE 355 sq.ft. 33 sq. mt.

Total 1,904 sq.ft. 177 sq. mt.



EAST VIEW



Stated dimensions are measured to the exterior boundaries of the exterior walls and the centerline of interior demising walls and in fact vary from the dimensions that would be determined by using the description and definition of the "Unit" set forth in the Declaration (which generally only includes the interior airspace between the perimeter walls and excludes interior structural components). For the square footage of the "Unit" calculated in the manner set forth in the Declaration, see Exhibit "3" to the Declaration. Additionally, measurements of rooms set forth on any floor plan are generally taken at the greatest points of each given room (as if the room were a perfect rectangle), without regard for any cutouts. Accordingly, the area of the actual room will typically be smaller than the product obtained by multiplying the stated length times width. All dimensions are approximate, and all floor plans and development plans are subject to change.

04NW

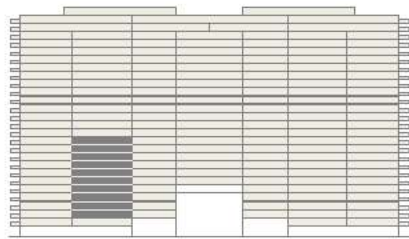
3rd-12th Floor

1 BEDROOM - 1 ½ BATHROOMS

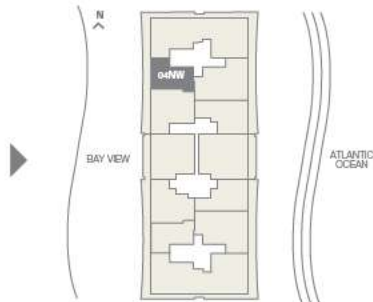
RESIDENCE 1,323 sq. ft. 123 sq. mt.


TERRACE 305 sq. ft. 28 sq. mt.

Total 1,628 sq. ft. 151 sq. mt.



WEST VIEW



 Stated dimensions are measured to the exterior boundaries of the exterior walls and the centerline of interior demising walls and in fact vary from the dimensions that would be determined by using the description and definition of the "Unit" set forth in the Declaration (which generally only includes the interior airspace between the perimeter walls and excludes interior structural components). For the square footage of the "Unit" calculated in the manner set forth in the Declaration, see Exhibit "3" to the Declaration. Additionally, measurements of rooms set forth on any floor plan are generally taken at the greatest points of each given room (as if the room were a perfect rectangle), without regard for any cutouts. Accordingly, the area of the actual room will typically be smaller than the product obtained by multiplying the stated length times width. All dimensions are approximate, and all floor plans and development plans are subject to change.

04SW

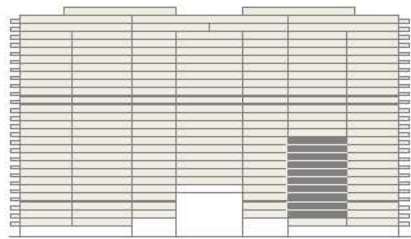
3rd-12th Floor

1 BEDROOM - 1 1/2 BATHROOMS

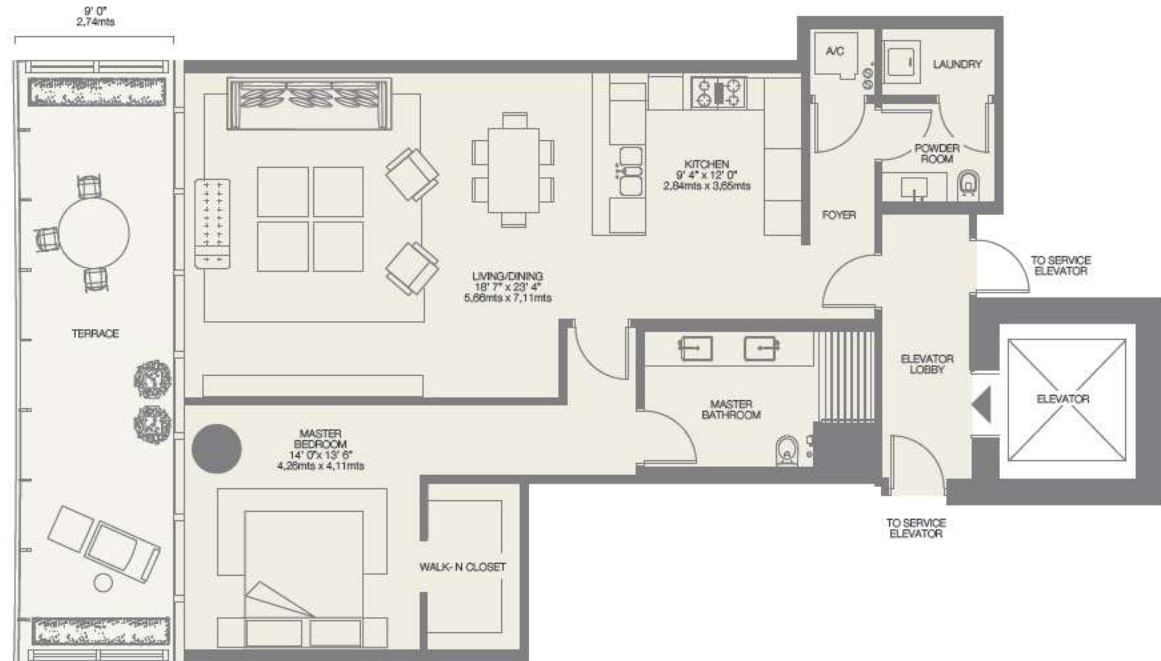
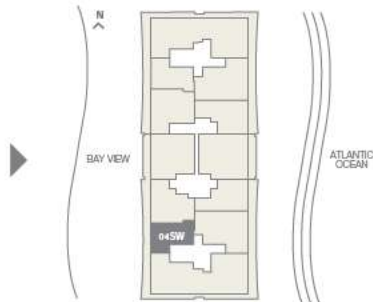
RESIDENCE 1,323 sq. ft. 123 sq. mt.

TERRACE 305 sq. ft. 28 sq. mt.

Total 1,628 sq. ft. 151 sq. mt.



WEST VIEW



Stated dimensions are measured to the exterior boundaries of the exterior walls and the centerline of interior demising walls and in fact vary from the dimensions that would be determined by using the description and definition of the "Unit" set forth in the Declaration (which generally only includes the interior airspace between the perimeter walls and excludes interior structural components). For the square footage of the "Unit" calculated in the manner set forth in the Declaration, see Exhibit "3" to the Declaration. Additionally, measurements of rooms set forth on any floor plan are generally taken at the greatest points of each given room (as if the room were a perfect rectangle), without regard for any cutouts. Accordingly, the area of the actual room will typically be smaller than the product obtained by multiplying the stated length times width. All dimensions are approximate, and all floor plans and development plans are subject to change.

05NW

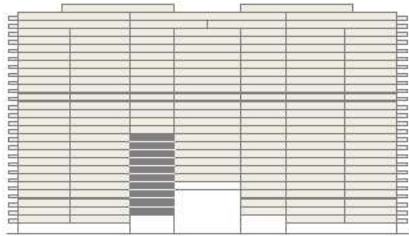
3rd-12th Floor

2 BEDROOMS - 2 ½ BATHROOMS

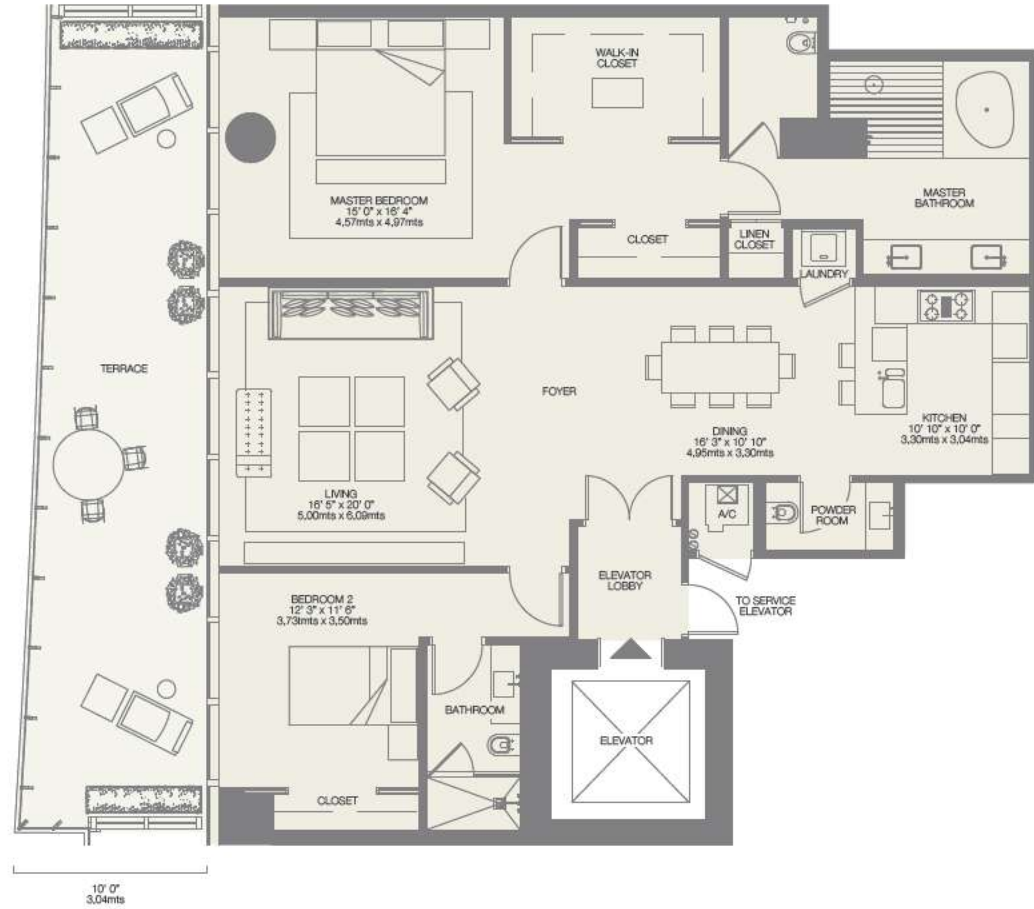
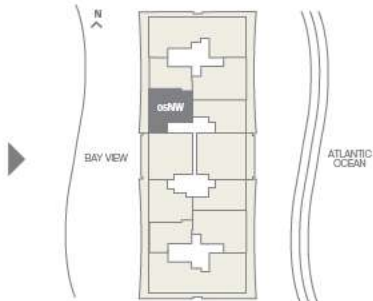
RESIDENCE 1,778 sq. ft. 165 sq. mt.

TERRACE 465 sq. ft. 43 sq. mt.

Total 2,243 sq. ft. 208 sq. mt.



WEST VIEW



Stated dimensions are measured to the exterior boundaries of the exterior walls and the centerline of interior demising walls and in fact vary from the dimensions that would be determined by using the description and definition of the "Unit" set forth in the Declaration (which generally only includes the interior airspace between the perimeter walls and excludes interior structural components). For the square footage of the "Unit" calculated in the manner set forth in the Declaration, see Exhibit "3" to the Declaration. Additionally, measurements of rooms set forth on any floor plan are generally taken at the greatest points of each given room (as if the room were a perfect rectangle), without regard for any cutouts. Accordingly, the area of the actual room will typically be smaller than the product obtained by multiplying the stated length times width. All dimensions are approximate, and all floor plans and development plans are subject to change.

05SW

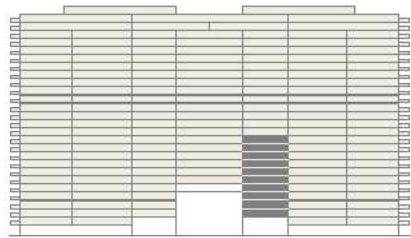
3rd-12th Floor

2 BEDROOMS - 2 1/2 BATHROOMS

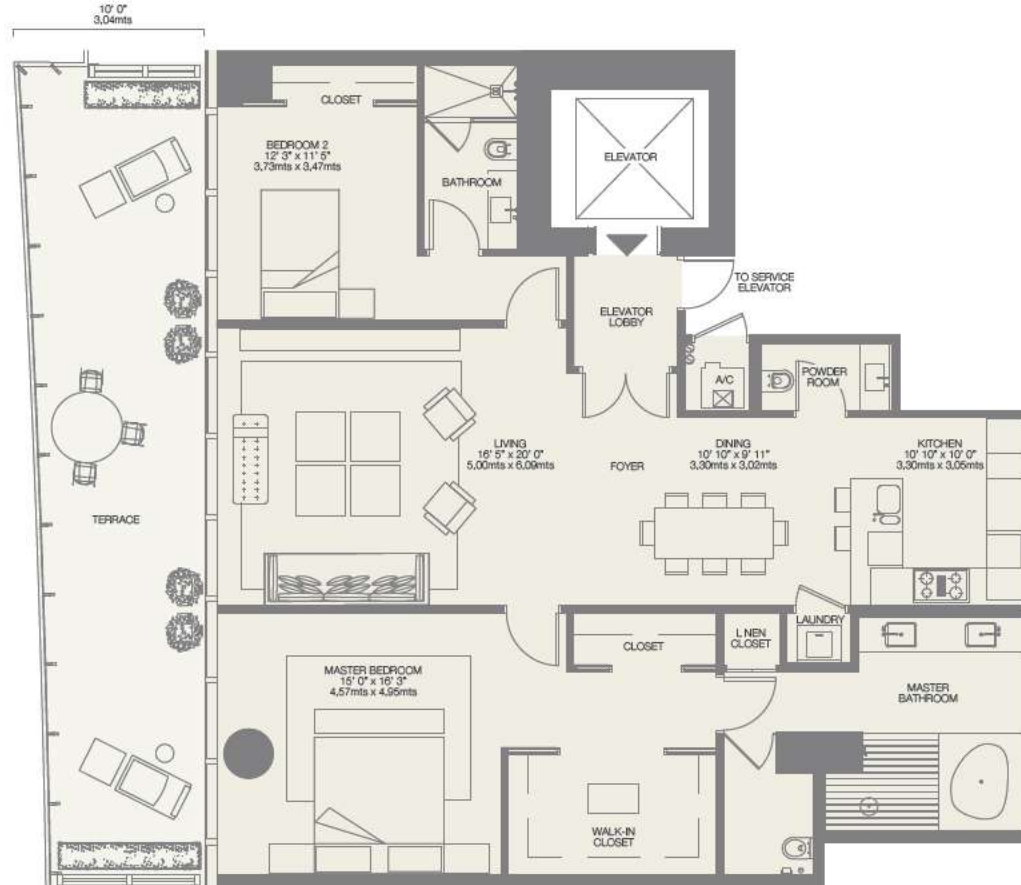
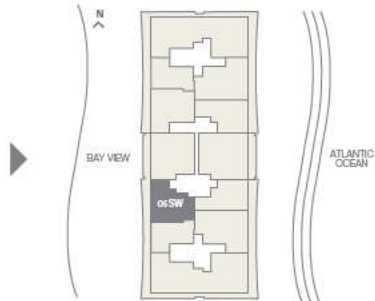
RESIDENCE 1,778 sq. ft. 165 sq. mt.


TERRACE 465 sq. ft. 43 sq. mt.

Total 2,243 sq. ft. 208 sq. mt.



WEST VIEW



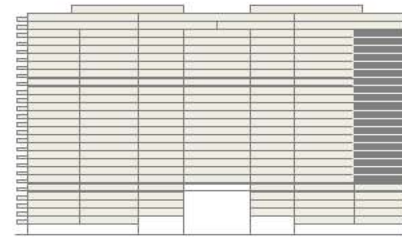
 Stated dimensions are measured to the exterior boundaries of the exterior walls and the centerline of interior demising walls and in fact vary from the dimensions that would be determined by using the description and definition of the "Unit" set forth in the Declaration (which generally only includes the interior airspace between the perimeter walls and excludes interior structural components). For the square footage of the "Unit" calculated in the manner set forth in the Declaration, see Exhibit "3" to the Declaration. Additionally, measurements of rooms set forth on any floor plan are generally taken at the greatest points of each given room (as if the room were a perfect rectangle), without regard for any cutouts. Accordingly, the area of the actual room will typically be smaller than the product obtained by multiplying the stated length times width. All dimensions are approximate, and all floor plans and development plans are subject to change.

01N

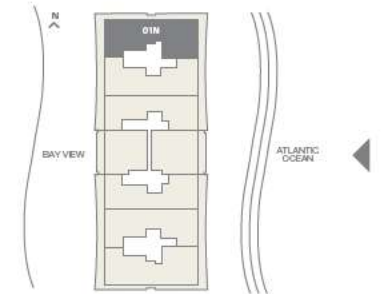
7th-26th Floor

3 BEDROOMS - 4 1/2 BATHROOMS - DEN - FAMILY

RESIDENCE	4,185 sq.ft.	388 sq. mt.
TERRACE	1,595 sq.ft.	148 sq. mt.
Total	5,780 sq.ft.	536 sq. mt.



EAST VIEW



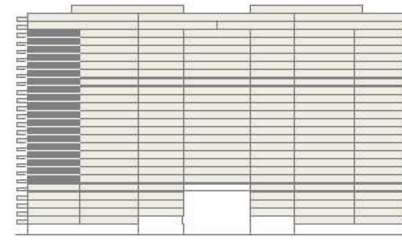
Stated dimensions are measured to the exterior boundaries of the exterior walls and the centerline of interior demising walls and in fact vary from the dimensions that would be determined by using the description and definition of the "Unit" set forth in the Declaration (which generally only includes the interior airspace between the perimeter walls and excludes interior structural components). For the square footage of the "Unit" calculated in the manner set forth in the Declaration, see Exhibit "3" to the Declaration. Additionally, measurements of rooms set forth on any floor plan are generally taken at the greatest points of each given room (as if the room were a perfect rectangle), without regard for any cutouts. Accordingly, the area of the actual room will typically be smaller than the product obtained by multiplying the stated length times width. All dimensions are approximate, and all floor plans and development plans are subject to change.

01S

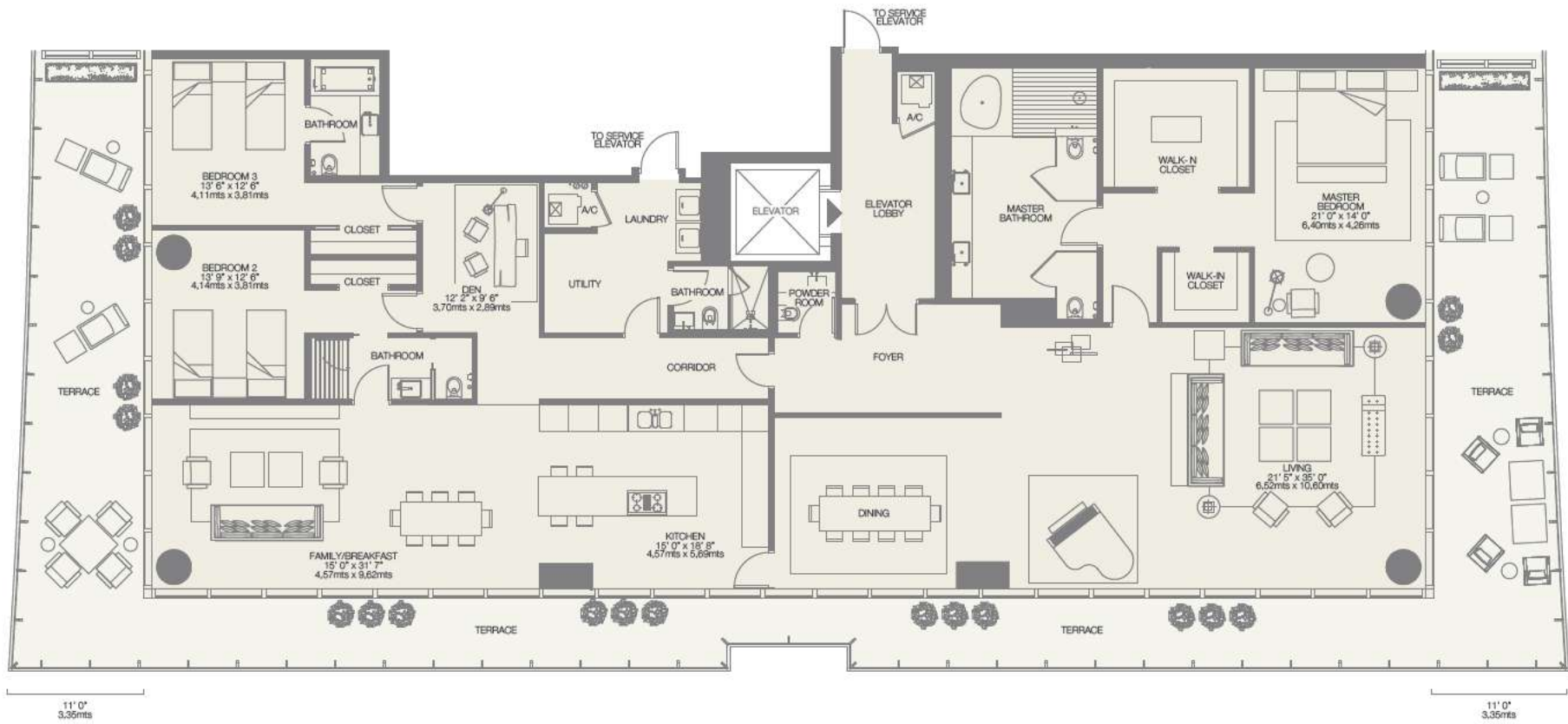
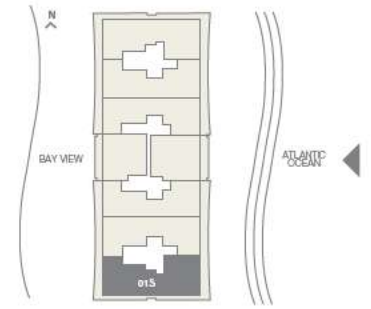
7th-26th Floor


3 BEDROOMS - 4 1/2 BATHROOMS - DEN - FAMILY

RESIDENCE	4,185 sq.ft. 388 sq. mt.
TERRACE	1,595 sq.ft. 148 sq. mt.
Total	5,780 sq.ft. 536 sq. mt.



EAST VIEW



 Stated dimensions are measured to the exterior boundaries of the exterior walls and the centerline of interior demising walls and in fact vary from the dimensions that would be determined by using the description and definition of the "Unit" set forth in the Declaration (which generally only includes the interior airspace between the perimeter walls and excludes interior structural components). For the square footage of the "Unit" calculated in the manner set forth in the Declaration, see Exhibit "3" to the Declaration. Additionally, measurements of rooms set forth on any floor plan are generally taken at the greatest points of each given room (as if the room were a perfect rectangle), without regard for any cutouts. Accordingly, the area of the actual room will typically be smaller than the product obtained by multiplying the stated length times width. All dimensions are approximate, and all floor plans and development plans are subject to change.

O2SE-M

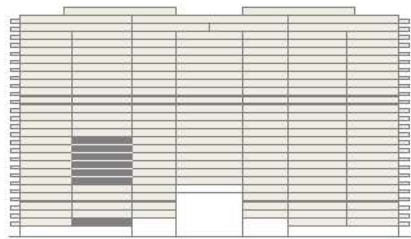
2nd, 7th-12th Floor

2 BEDROOMS - 3 BATHROOMS - DEN

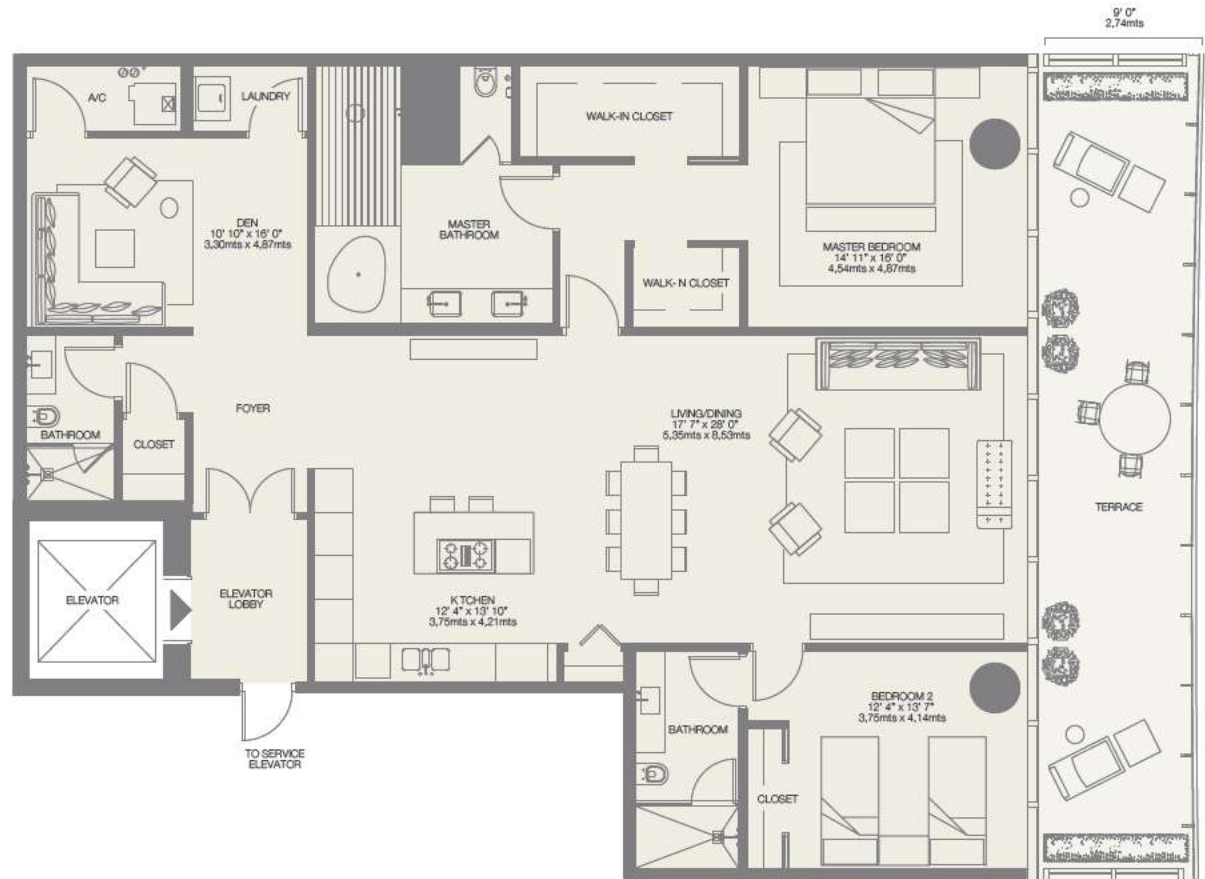
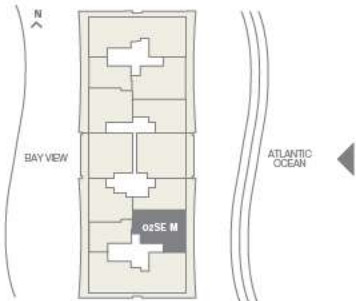
RESIDENCE 2,233 sq.ft. 207 sq.mt.

TERRACE 425 sq.ft. 40 sq.mt.

Total 2,658 sq.ft. 247 sq.mt.



EAST VIEW



Stated dimensions are measured to the exterior boundaries of the exterior walls and the centerline of interior demising walls and in fact vary from the dimensions that would be determined by using the description and definition of the "Unit" set forth in the Declaration (which generally only includes the interior airspace between the perimeter walls and excludes interior structural components). For the square footage of the "Unit" calculated in the manner set forth in the Declaration, see Exhibit "3" to the Declaration. Additionally, measurements of rooms set forth on any floor plan are generally taken at the greatest points of each given room (as if the room were a perfect rectangle), without regard for any cutouts. Accordingly, the area of the actual room will typically be smaller than the product obtained by multiplying the stated length times width. All dimensions are approximate, and all floor plans and development plans are subject to change.

O2NE-M

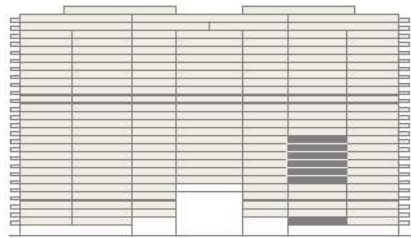
2nd, 7th-12th Floor

2 BEDROOMS - 3 BATHROOMS - DEN

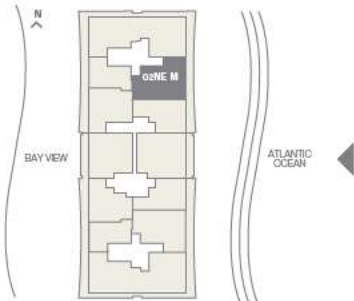
RESIDENCE 2,233 sq.ft. 207 sq.mt.


TERRACE 425 sq.ft. 40 sq.mt.

Total 2,658 sq.ft. 247 sq.mt.



EAST VIEW



 Stated dimensions are measured to the exterior boundaries of the exterior walls and the centerline of interior demising walls and in fact vary from the dimensions that would be determined by using the description and definition of the "Unit" set forth in the Declaration (which generally only includes the interior airspace between the perimeter walls and excludes interior structural components). For the square footage of the "Unit" calculated in the manner set forth in the Declaration, see Exhibit "3" to the Declaration. Additionally, measurements of rooms set forth on any floor plan are generally taken at the greatest points of each given room (as if the room were a perfect rectangle), without regard for any cutouts. Accordingly, the area of the actual room will typically be smaller than the product obtained by multiplying the stated length times width. All dimensions are approximate, and all floor plans and development plans are subject to change.

03SE-M

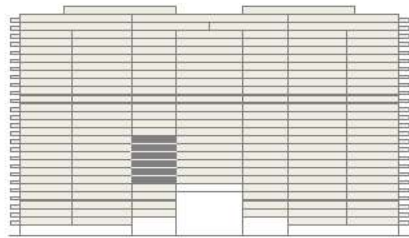
7th-12th Floor

1 BEDROOM - 2 BATHROOMS - DEN

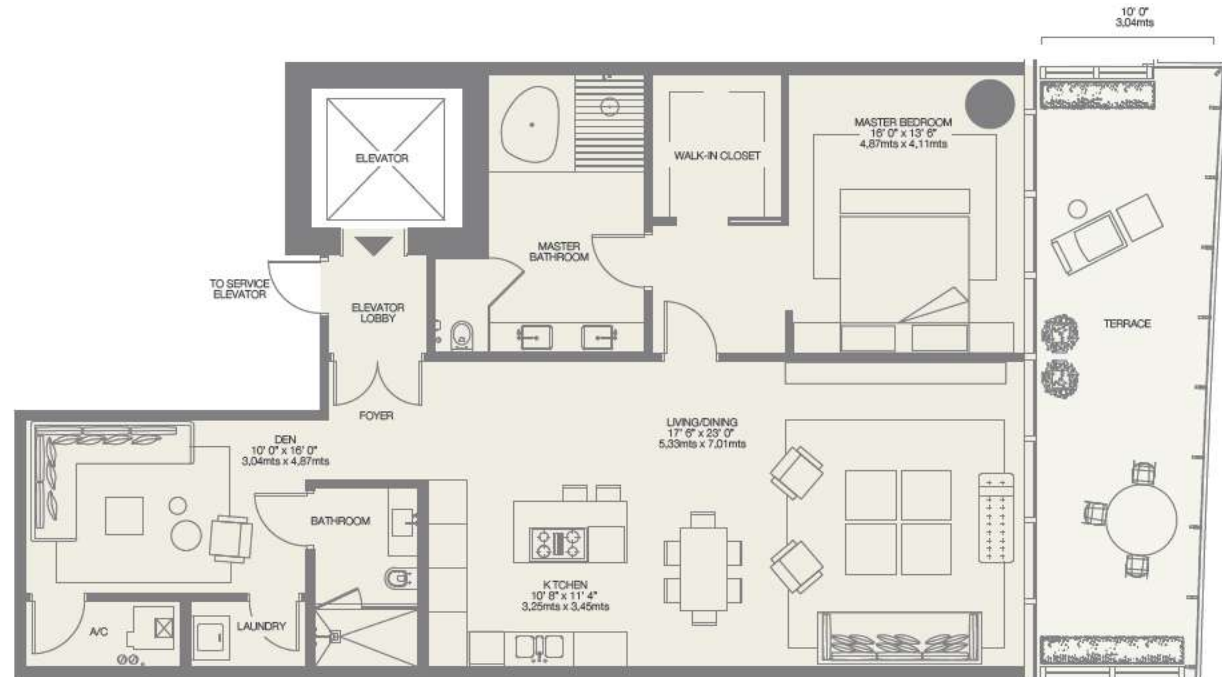
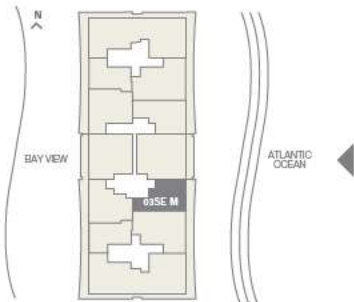
RESIDENCE 1,581 sq.ft. 147 sq.mt.

TERRACE 355 sq.ft. 33 sq.mt.

Total 1,936 sq.ft. 180 sq.mt.



EAST VIEW



Stated dimensions are measured to the exterior boundaries of the exterior walls and the centerline of interior demising walls and in fact vary from the dimensions that would be determined by using the description and definition of the "Unit" set forth in the Declaration (which generally only includes the interior airspace between the perimeter walls and excludes interior structural components). For the square footage of the "Unit" calculated in the manner set forth in the Declaration, see Exhibit "3" to the Declaration. Additionally, measurements of rooms set forth on any floor plan are generally taken at the greatest points of each given room (as if the room were a perfect rectangle), without regard for any cutouts. Accordingly, the area of the actual room will typically be smaller than the product obtained by multiplying the stated length times width. All dimensions are approximate, and all floor plans and development plans are subject to change.

03NE-M

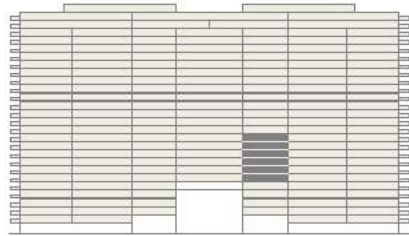
7th-12th Floor

1 BEDROOM - 2 BATHROOMS - DEN

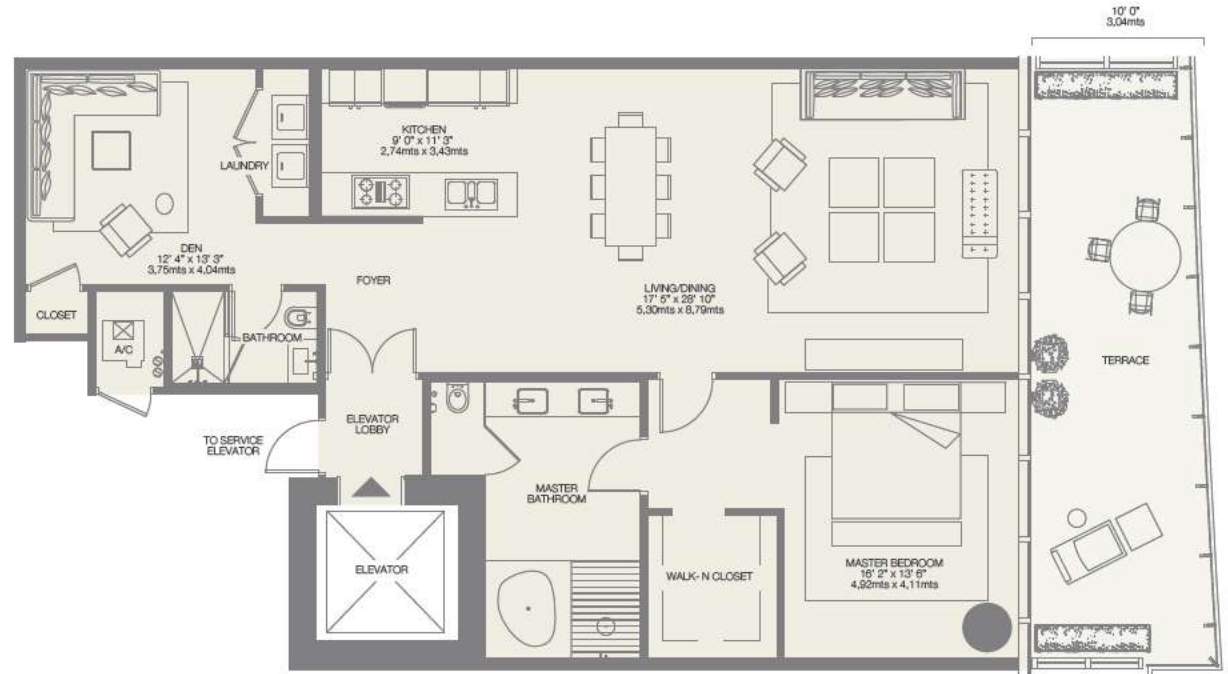
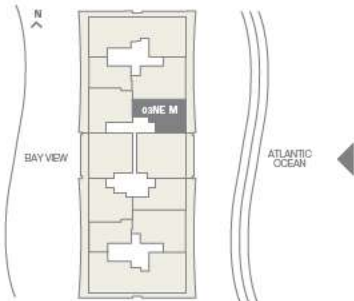
RESIDENCE 1,632 sq. ft. 152 sq. mt.

TERRACE 355 sq. ft. 33 sq. mt.

Total 1,987 sq. ft. 185 sq. mt.



EAST VIEW



Stated dimensions are measured to the exterior boundaries of the exterior walls and the centerline of interior demising walls and in fact vary from the dimensions that would be determined by using the description and definition of the "Unit" set forth in the Declaration (which generally only includes the interior airspace between the perimeter walls and excludes interior structural components). For the square footage of the "Unit" calculated in the manner set forth in the Declaration, see Exhibit "3" to the Declaration. Additionally, measurements of rooms set forth on any floor plan are generally taken at the greatest points of each given room (as if the room were a perfect rectangle), without regard for any cutouts. Accordingly, the area of the actual room will typically be smaller than the product obtained by multiplying the stated length times width. All dimensions are approximate, and all floor plans and development plans are subject to change.

06E

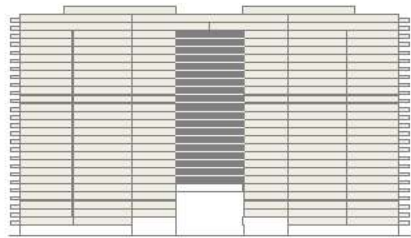
7th-26th Floor

2 BEDROOMS - 3 1/2 BATHROOMS - DEN

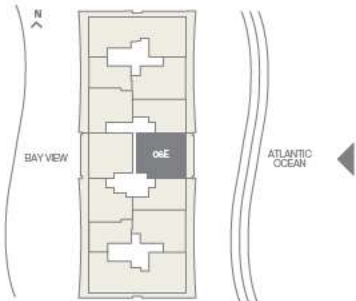
RESIDENCE 2,625 sq.ft. 243 sq.mt.

TERRACE 445 sq.ft. 41 sq.mt.

Total 3,070 sq.ft. 284 sq.mt.



EAST VIEW



Stated dimensions are measured to the exterior boundaries of the exterior walls and the centerline of interior demising walls and in fact vary from the dimensions that would be determined by using the description and definition of the "Unit" set forth in the Declaration (which generally only includes the interior airspace between the perimeter walls and excludes interior structural components). For the square footage of the "Unit" calculated in the manner set forth in the Declaration, see Exhibit "3" to the Declaration. Additionally, measurements of rooms set forth on any floor plan are generally taken at the greatest points of each given room (as if the room were a perfect rectangle), without regard for any cutouts. Accordingly, the area of the actual room will typically be smaller than the product obtained by multiplying the stated length times width. All dimensions are approximate, and all floor plans and development plans are subject to change.

07W

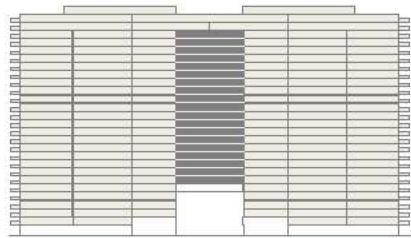
7th-26th Floor

2 BEDROOMS - 3 BATHROOMS - DEN

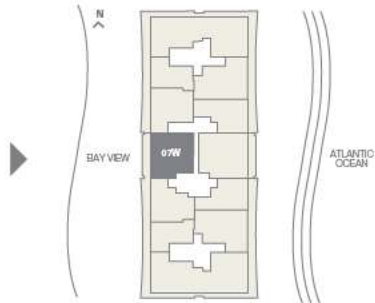
RESIDENCE 2,296 sq. ft. 214 sq. mt.


TERRACE 445 sq. ft. 41 sq. mt.

Total 2,741 sq. ft. 255 sq. mt.



WEST VIEW



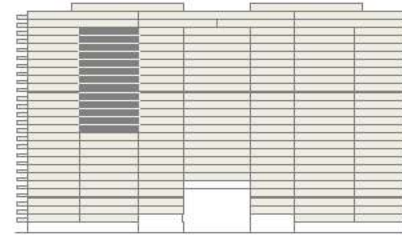
 Stated dimensions are measured to the exterior boundaries of the exterior walls and the centerline of interior demising walls and in fact vary from the dimensions that would be determined by using the description and definition of the "Unit" set forth in the Declaration (which generally only includes the interior airspace between the perimeter walls and excludes interior structural components). For the square footage of the "Unit" calculated in the manner set forth in the Declaration, see Exhibit "3" to the Declaration. Additionally, measurements of rooms set forth on any floor plan are generally taken at the greatest points of each given room (as if the room were a perfect rectangle), without regard for any cutouts. Accordingly, the area of the actual room will typically be smaller than the product obtained by multiplying the stated length times width. All dimensions are approximate, and all floor plans and development plans are subject to change.

O2S

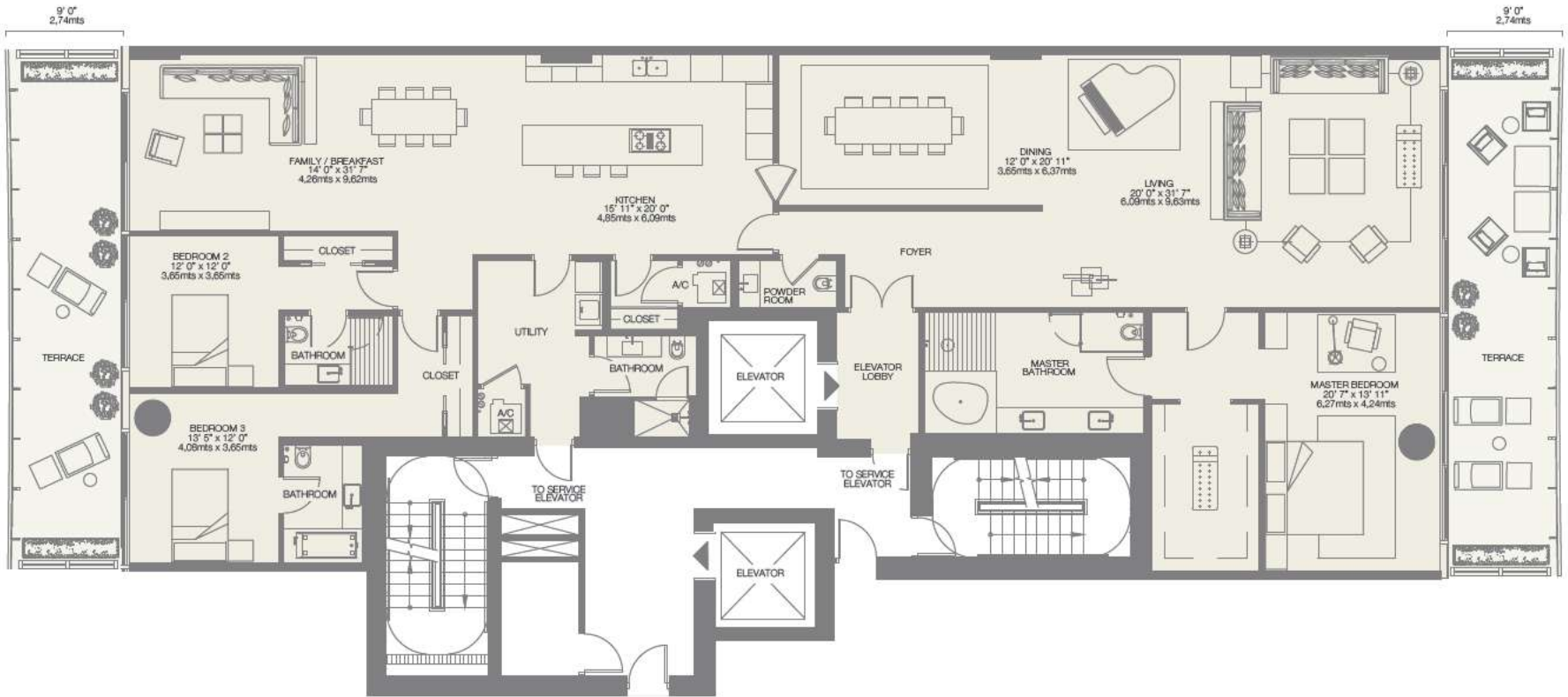
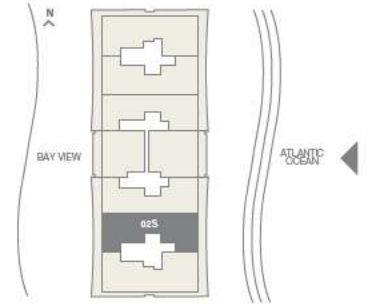
14th-26th Floor

3 BEDROOMS - 4 1/2 BATHROOMS - FAMILY

RESIDENCE	3,592 sq.ft. 334 sq. mt.
TERRACE	745 sq.ft. 69 sq. mt.
Total	4,337 sq.ft. 403 sq. mt.



EAST VIEW



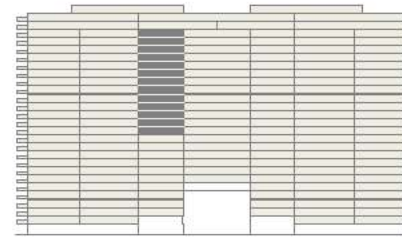
Stated dimensions are measured to the exterior boundaries of the exterior walls and the centerline of interior demising walls and in fact vary from the dimensions that would be determined by using the description and definition of the "Unit" set forth in the Declaration (which generally only includes the interior airspace between the perimeter walls and excludes interior structural components). For the square footage of the "Unit" calculated in the manner set forth in the Declaration, see Exhibit "3" to the Declaration. Additionally, measurements of rooms set forth on any floor plan are generally taken at the greatest points of each given room (as if the room were a perfect rectangle), without regard for any cutouts. Accordingly, the area of the actual room will typically be smaller than the product obtained by multiplying the stated length times width. All dimensions are approximate, and all floor plans and development plans are subject to change.

O3S

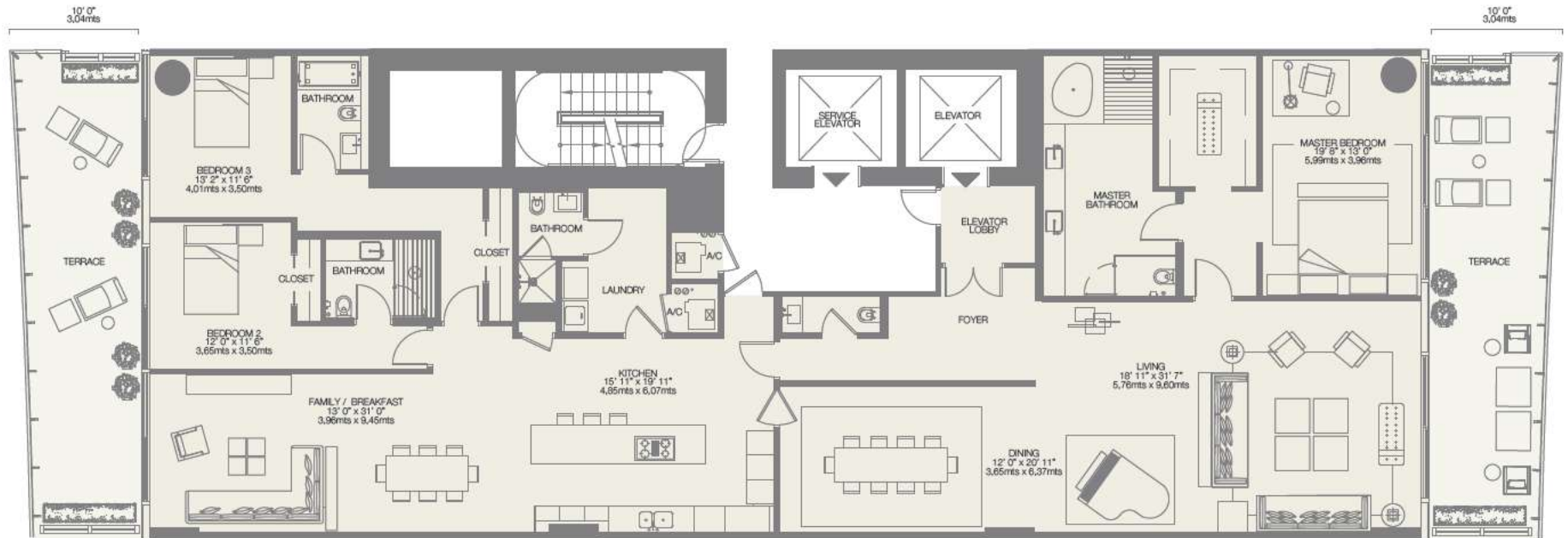
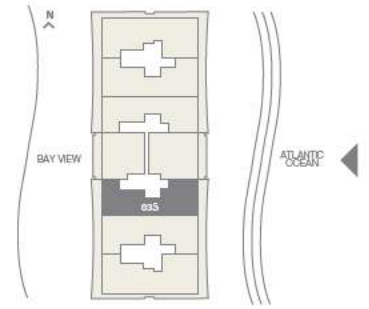
14th-26th Floor

3 BEDROOMS - 4 1/2 BATHROOMS - FAMILY

RESIDENCE	3,408 sq.ft. 316 sq. mt.
TERRACE	790 sq.ft. 73 sq. mt.
Total	4,198 sq.ft. 389 sq. mt.



EAST VIEW



Stated dimensions are measured to the exterior boundaries of the exterior walls and the centerline of interior demising walls and in fact vary from the dimensions that would be determined by using the description and definition of the "Unit" set forth in the Declaration (which generally only includes the interior airspace between the perimeter walls and excludes interior structural components). For the square footage of the "Unit" calculated in the manner set forth in the Declaration, see Exhibit "3" to the Declaration. Additionally, measurements of rooms set forth on any floor plan are generally taken at the greatest points of each given room (as if the room were a perfect rectangle), without regard for any cutouts. Accordingly, the area of the actual room will typically be smaller than the product obtained by multiplying the stated length times width. All dimensions are approximate, and all floor plans and development plans are subject to change.

03N

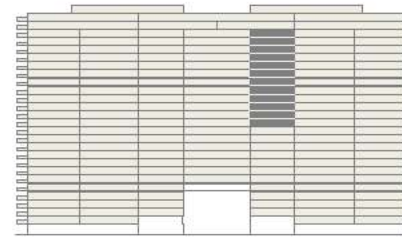
15th-26th Floor

3 BEDROOMS - 4 ½ BATHROOMS - FAMILY

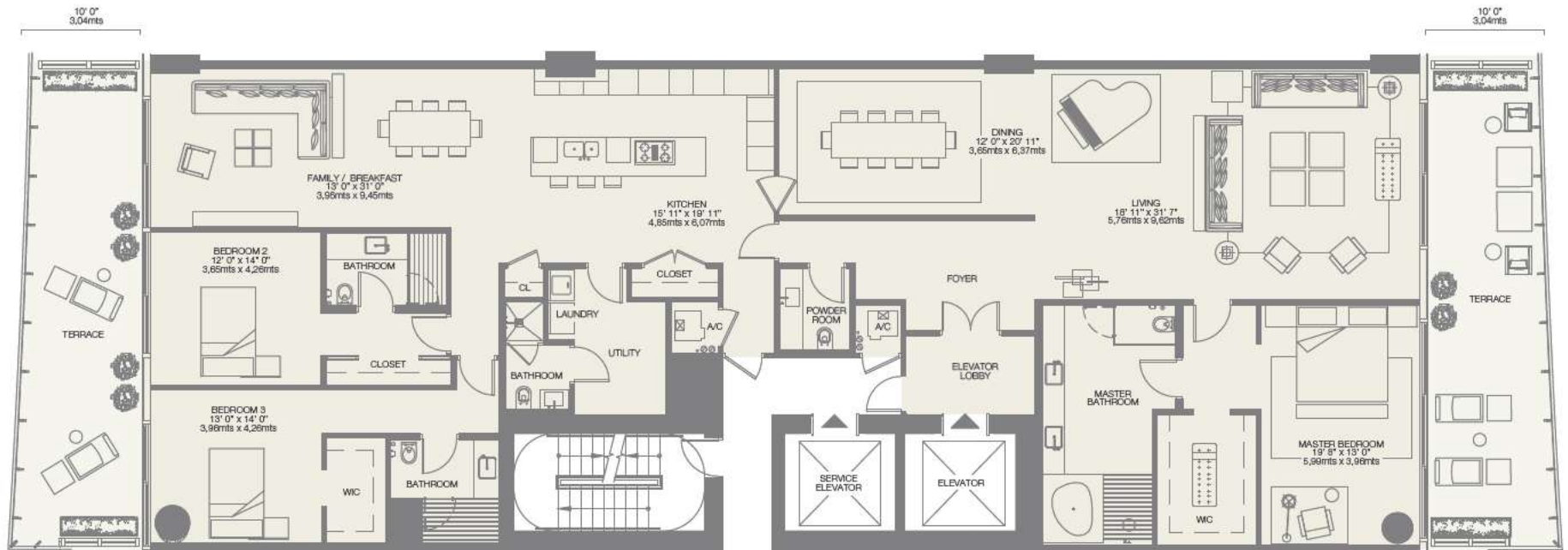
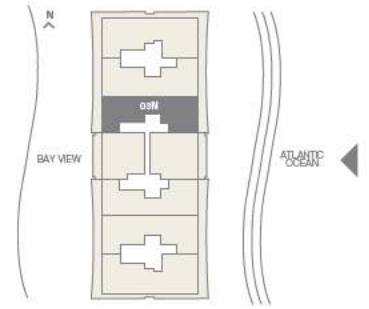
RESIDENCE 3,607 sq.ft. 335 sq. mt.

TERRACE 790 sq.ft. 73 sq. mt.

Total 4,397 sq.ft. 408 sq. mt.



EAST VIEW



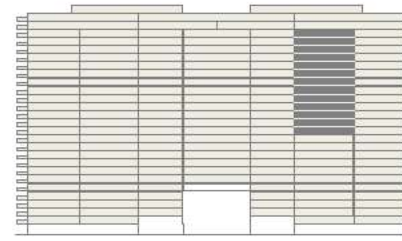
Stated dimensions are measured to the exterior boundaries of the exterior walls and the centerline of interior demising walls and in fact vary from the dimensions that would be determined by using the description and definition of the "Unit" set forth in the Declaration (which generally only includes the interior airspace between the perimeter walls and excludes interior structural components). For the square footage of the "Unit" calculated in the manner set forth in the Declaration, see Exhibit "3" to the Declaration. Additionally, measurements of rooms set forth on any floor plan are generally taken at the greatest points of each given room (as if the room were a perfect rectangle), without regard for any cutouts. Accordingly, the area of the actual room will typically be smaller than the product obtained by multiplying the stated length times width. All dimensions are approximate, and all floor plans and development plans are subject to change.

02N

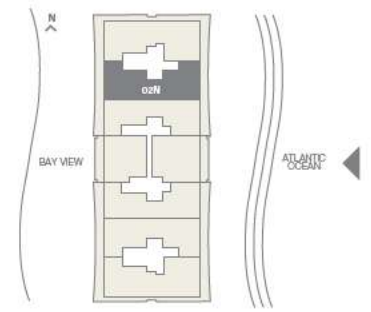
14th-26th Floor

3 BEDROOMS - 4 1/2 BATHROOMS - FAMILY

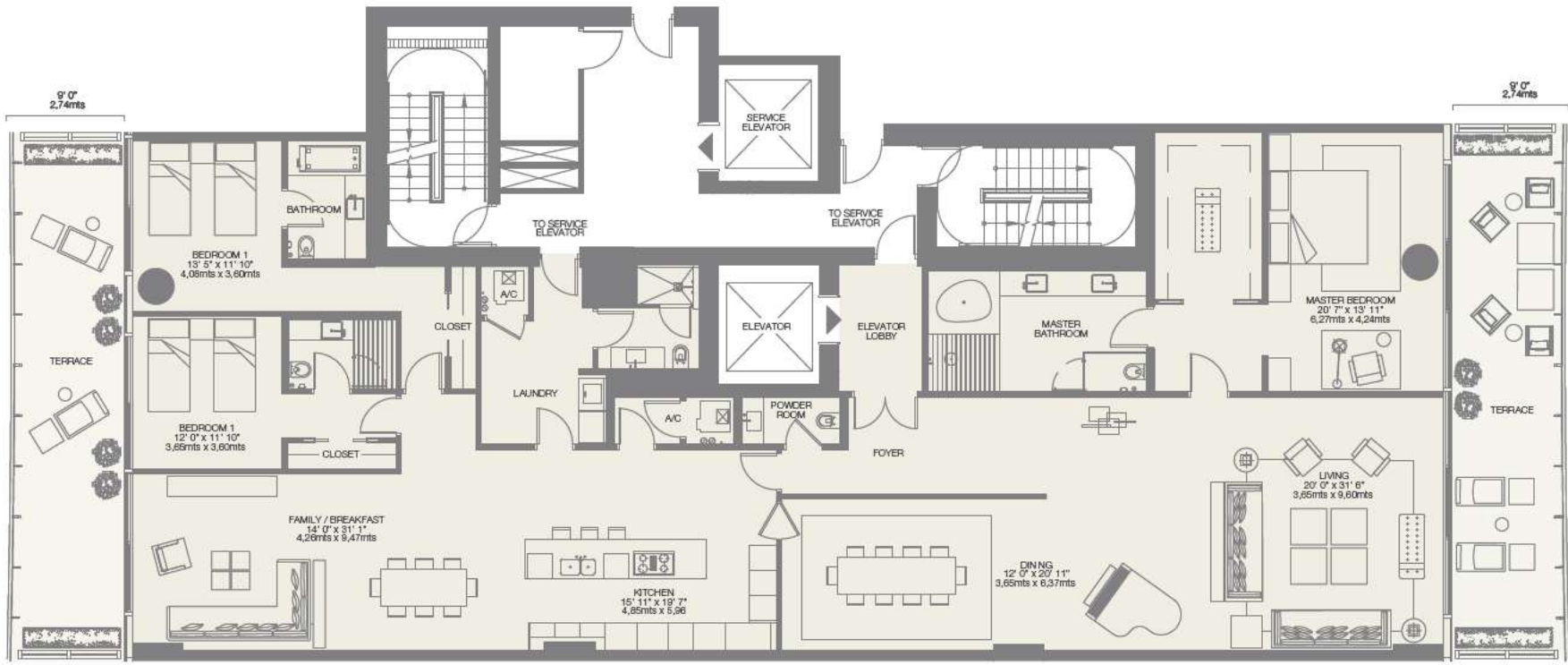
RESIDENCE	3,592 sq.ft. 334 sq. mt.
TERRACE	745 sq.ft. 69 sq. mt.
Total	4,337 sq.ft. 403 sq. mt.



EAST VIEW



BAY VIEW



Stated dimensions are measured to the exterior boundaries of the exterior walls and the centerline of interior demising walls and in fact vary from the dimensions that would be determined by using the description and definition of the "Unit" set forth in the Declaration (which generally only includes the interior airspace between the perimeter walls and excludes interior structural components). For the square footage of the "Unit" calculated in the manner set forth in the Declaration, see Exhibit "3" to the Declaration. Additionally, measurements of rooms set forth on any floor plan are generally taken at the greatest points of each given room (as if the room were a perfect rectangle), without regard for any cutouts. Accordingly, the area of the actual room will typically be smaller than the product obtained by multiplying the stated length times width. All dimensions are approximate, and all floor plans and development plans are subject to change.

PH-01N

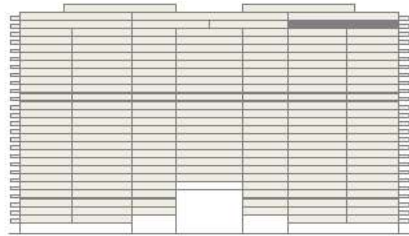
27th Floor

4 BEDROOMS - 6 1/2 BATHROOMS - FAMILY - DEN

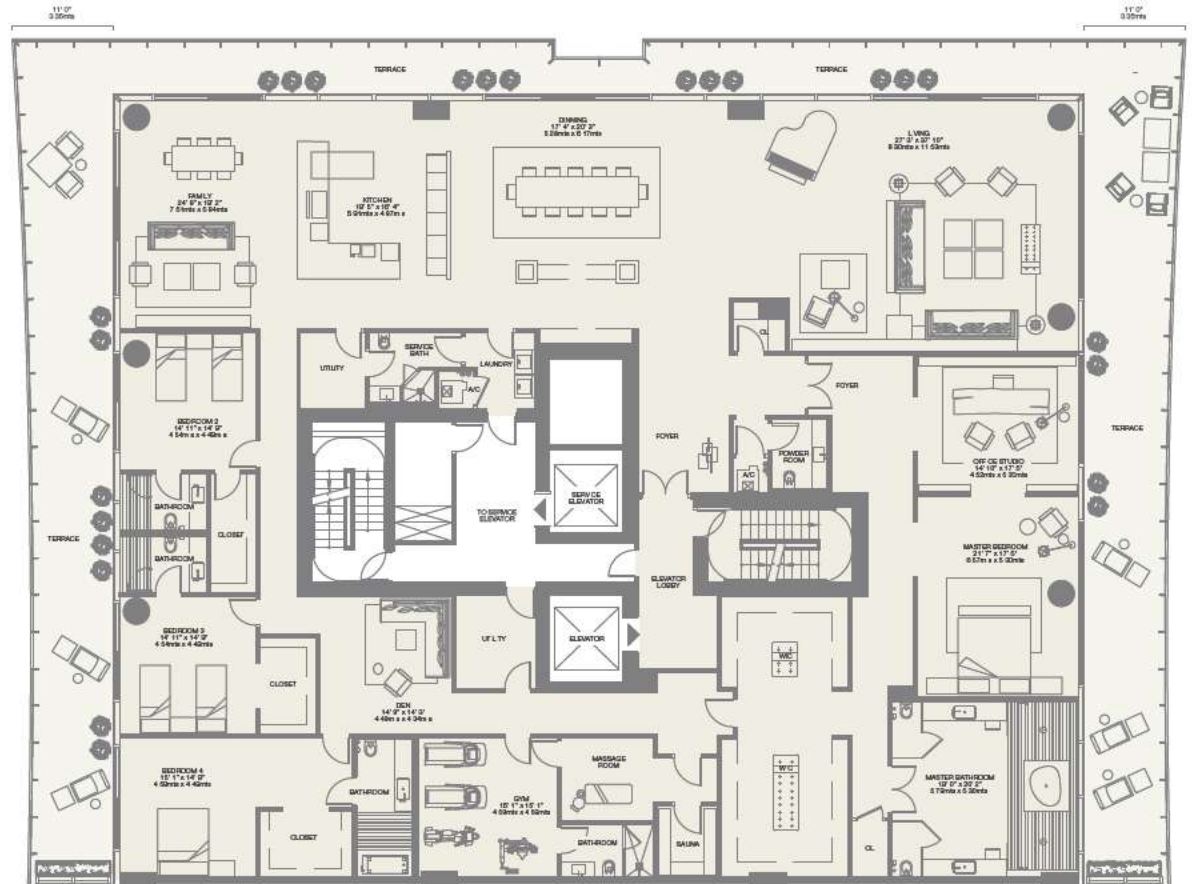
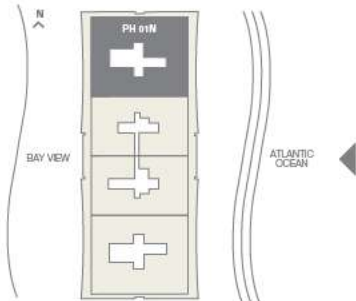
RESIDENCE 7,774 sq.ft. 722 sq.mt.

TERRACE 2,335 sq.ft. 217 sq.mt.

Total 10,109 sq.ft. 939 sq.mt.



EAST VIEW



Stated dimensions are measured to the exterior boundaries of the exterior walls and the centerline of interior demising walls and in fact vary from the dimensions that would be determined by using the description and definition of the "Unit" set forth in the Declaration (which generally only includes the interior airspace between the perimeter walls and excludes interior structural components). For the square footage of the "Unit" calculated in the manner set forth in the Declaration, see Exhibit "3" to the Declaration. Additionally, measurements of rooms set forth on any floor plan are generally taken at the greatest points of each given room (as if the room were a perfect rectangle), without regard for any cutouts. Accordingly, the area of the actual room will typically be smaller than the product obtained by multiplying the stated length times width. All dimensions are approximate, and all floor plans and development plans are subject to change.

PH-02N

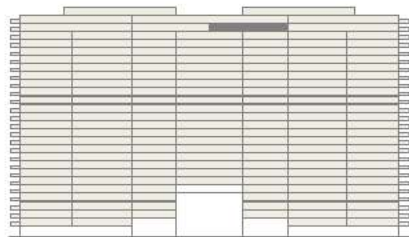
27th Floor

4 BEDROOMS - 5 1/2 BATHROOMS - FAMILY - DEN

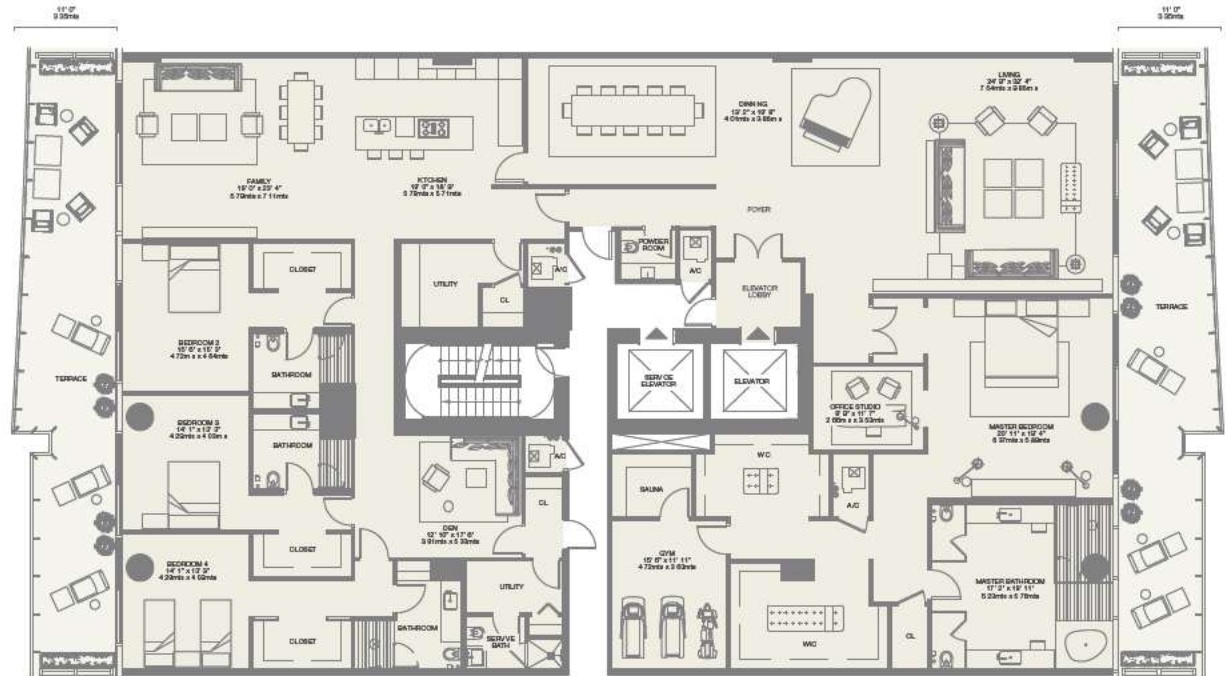
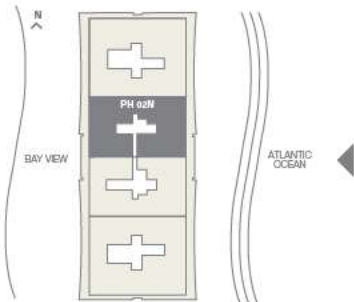
RESIDENCE 6,111 sq. ft. 567 sq. mt.


TERRACE 1,240 sq. ft. 115 sq. mt.

Total 7,351 sq. ft. 682 sq. mt.



EAST VIEW



 Stated dimensions are measured to the exterior boundaries of the exterior walls and the centerline of interior demising walls and in fact vary from the dimensions that would be determined by using the description and definition of the "Unit" set forth in the Declaration (which generally only includes the interior airspace between the perimeter walls and excludes interior structural components). For the square footage of the "Unit" calculated in the manner set forth in the Declaration, see Exhibit "3" to the Declaration. Additionally, measurements of rooms set forth on any floor plan are generally taken at the greatest points of each given room (as if the room were a perfect rectangle), without regard for any cutouts. Accordingly, the area of the actual room will typically be smaller than the product obtained by multiplying the stated length times width. All dimensions are approximate, and all floor plans and development plans are subject to change.

PH-02S

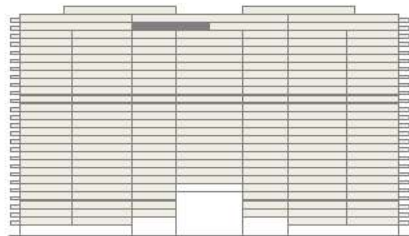
27th Floor

4 BEDROOMS - 5 1/2 BATHROOMS - FAMILY - DEN

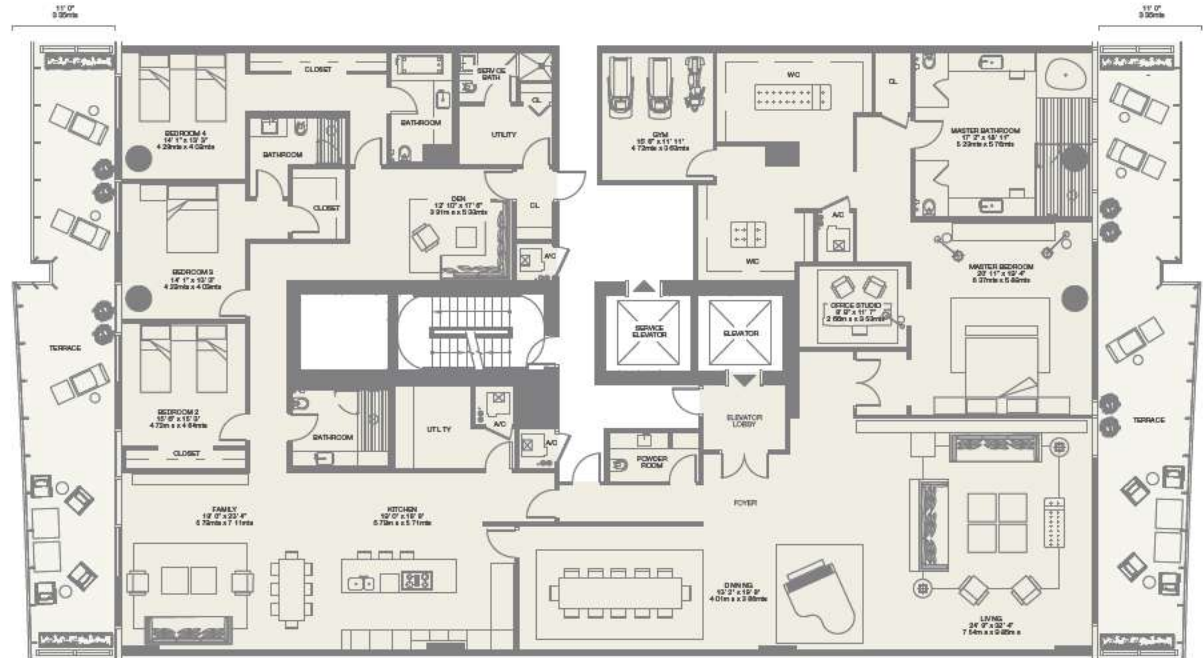
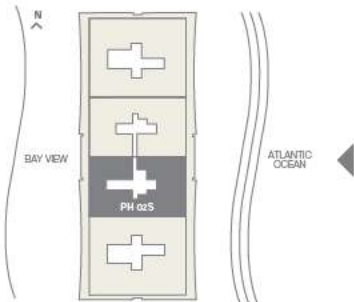
RESIDENCE 5,904 sq.ft. 549 sq. mt.

TERRACE 1,240 sq.ft. 115 sq. mt.

Total 7,144 sq.ft. 664 sq. mt.



EAST VIEW



Stated dimensions are measured to the exterior boundaries of the exterior walls and the centerline of interior demising walls and in fact vary from the dimensions that would be determined by using the description and definition of the "Unit" set forth in the Declaration (which generally only includes the interior airspace between the perimeter walls and excludes interior structural components). For the square footage of the "Unit" calculated in the manner set forth in the Declaration, see Exhibit "3" to the Declaration. Additionally, measurements of rooms set forth on any floor plan are generally taken at the greatest points of each given room (as if the room were a perfect rectangle), without regard for any cutouts. Accordingly, the area of the actual room will typically be smaller than the product obtained by multiplying the stated length times width. All dimensions are approximate, and all floor plans and development plans are subject to change.

PH-01S

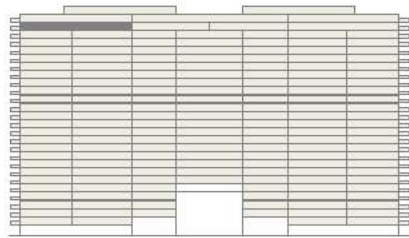
27th Floor

4 BEDROOMS - 6 1/2 BATHROOMS - FAMILY - DEN

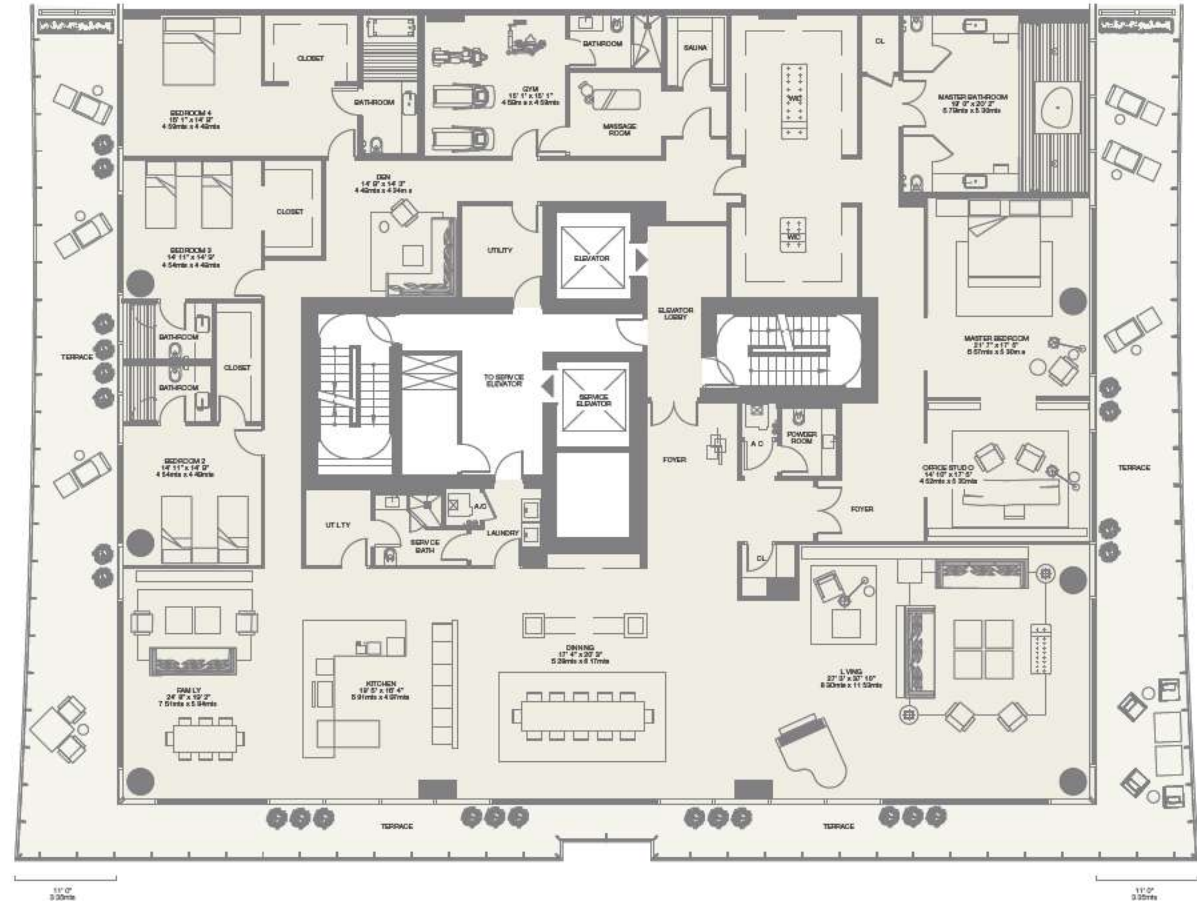
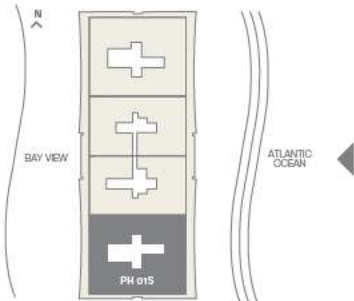
RESIDENCE 7,774 sq.ft. 722 sq.mt.

TERRACE 2,335 sq.ft. 217 sq.mt.

Total 10,109 sq.ft. 939 sq.mt.



EAST VIEW



Stated dimensions are measured to the exterior boundaries of the exterior walls and the centerline of interior demising walls and in fact vary from the dimensions that would be determined by using the description and definition of the "Unit" set forth in the Declaration (which generally only includes the interior airspace between the perimeter walls and excludes interior structural components). For the square footage of the "Unit" calculated in the manner set forth in the Declaration, see Exhibit "3" to the Declaration. Additionally, measurements of rooms set forth on any floor plan are generally taken at the greatest points of each given room (as if the room were a perfect rectangle), without regard for any cutouts. Accordingly, the area of the actual room will typically be smaller than the product obtained by multiplying the stated length times width. All dimensions are approximate, and all floor plans and development plans are subject to change.

UPH01S

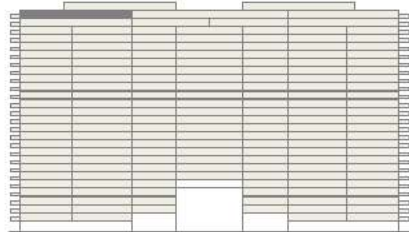
28th Floor

4 BEDROOMS - 7 1/2 BATHROOMS - FAMILY - DEN

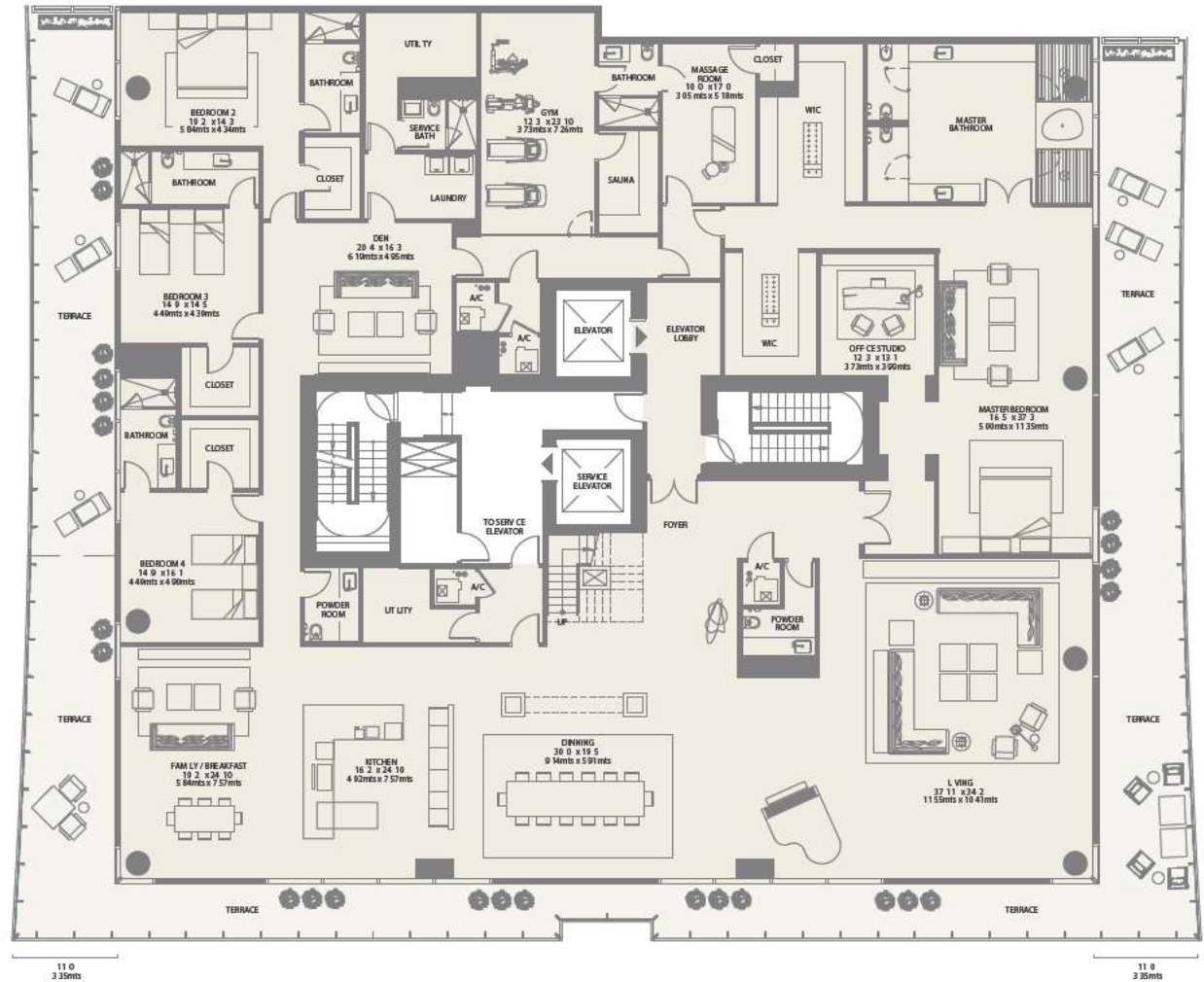
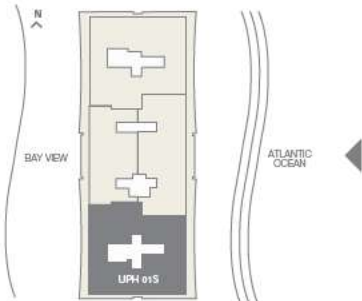
RESIDENCE 9,371 sq. ft. 870 sq. mt.

TERRACE 9,950 sq. ft. 924 sq. mt.

Total 19,321 sq. ft. 1,794 sq. mt.



EAST VIEW



Stated dimensions are measured to the exterior boundaries of the exterior walls and the centerline of interior demising walls and in fact vary from the dimensions that would be determined by using the description and definition of the "Unit" set forth in the Declaration (which generally only includes the interior airspace between the perimeter walls and excludes interior structural components). For the square footage of the "Unit" calculated in the manner set forth in the Declaration, see Exhibit "3" to the Declaration. Additionally, measurements of rooms set forth on any floor plan are generally taken at the greatest points of each given room (as if the room were a perfect rectangle), without regard for any cutouts. Accordingly, the area of the actual room will typically be smaller than the product obtained by multiplying the stated length times width. All dimensions are approximate, and all floor plans and development plans are subject to change.

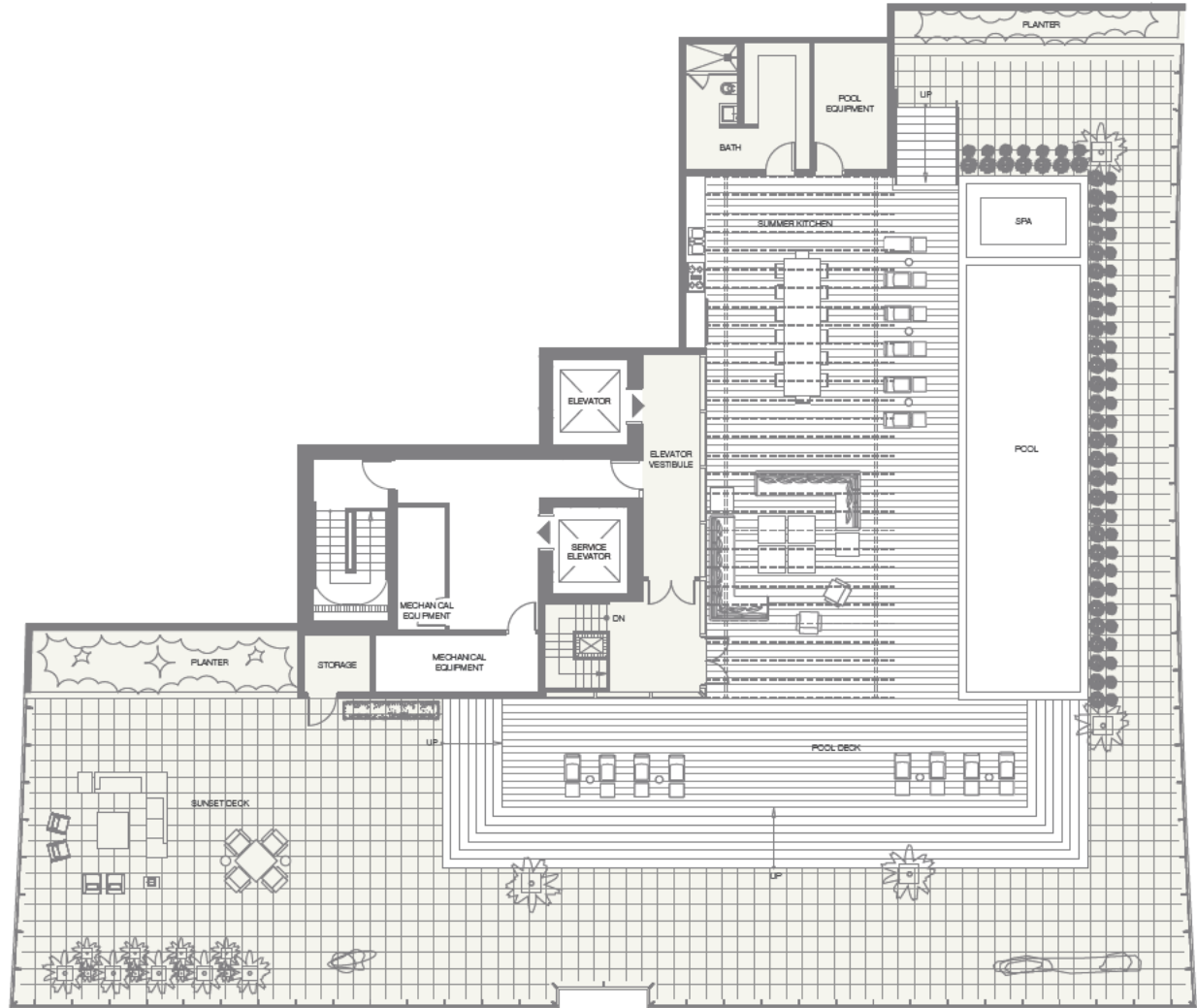
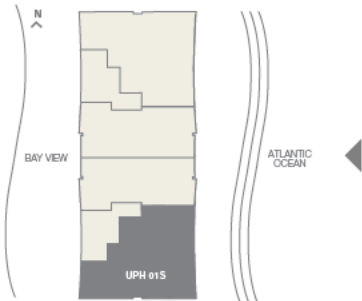
UPH01S

28th Floor - Terrace

RESIDENCE	9,371 sq. ft. 870 sq. mt.
TERRACE	9,950 sq. ft. 924 sq. mt.
Total	19,321 sq. ft. 1.794 sq. mt.



EAST VIEW



Stated dimensions are measured to the exterior boundaries of the exterior walls and the centerline of interior demising walls and in fact vary from the dimensions that would be determined by using the description and definition of the "Unit" set forth in the Declaration (which generally only includes the interior airspace between the perimeter walls and excludes interior structural components). For the square footage of the "Unit" calculated in the manner set forth in the Declaration, see Exhibit "3" to the Declaration. Additionally, measurements of rooms set forth on any floor plan are generally taken at the greatest points of each given room (as if the room were a perfect rectangle), without regard for any cutouts. Accordingly, the area of the actual room will typically be smaller than the product obtained by multiplying the stated length times width. All dimensions are approximate, and all floor plans and development plans are subject to change.

UPH01N

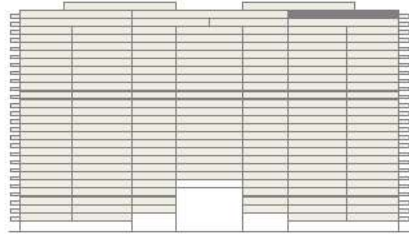
28th Floor

4 BEDROOMS - 7 1/2 BATHROOMS - FAMILY - DEN

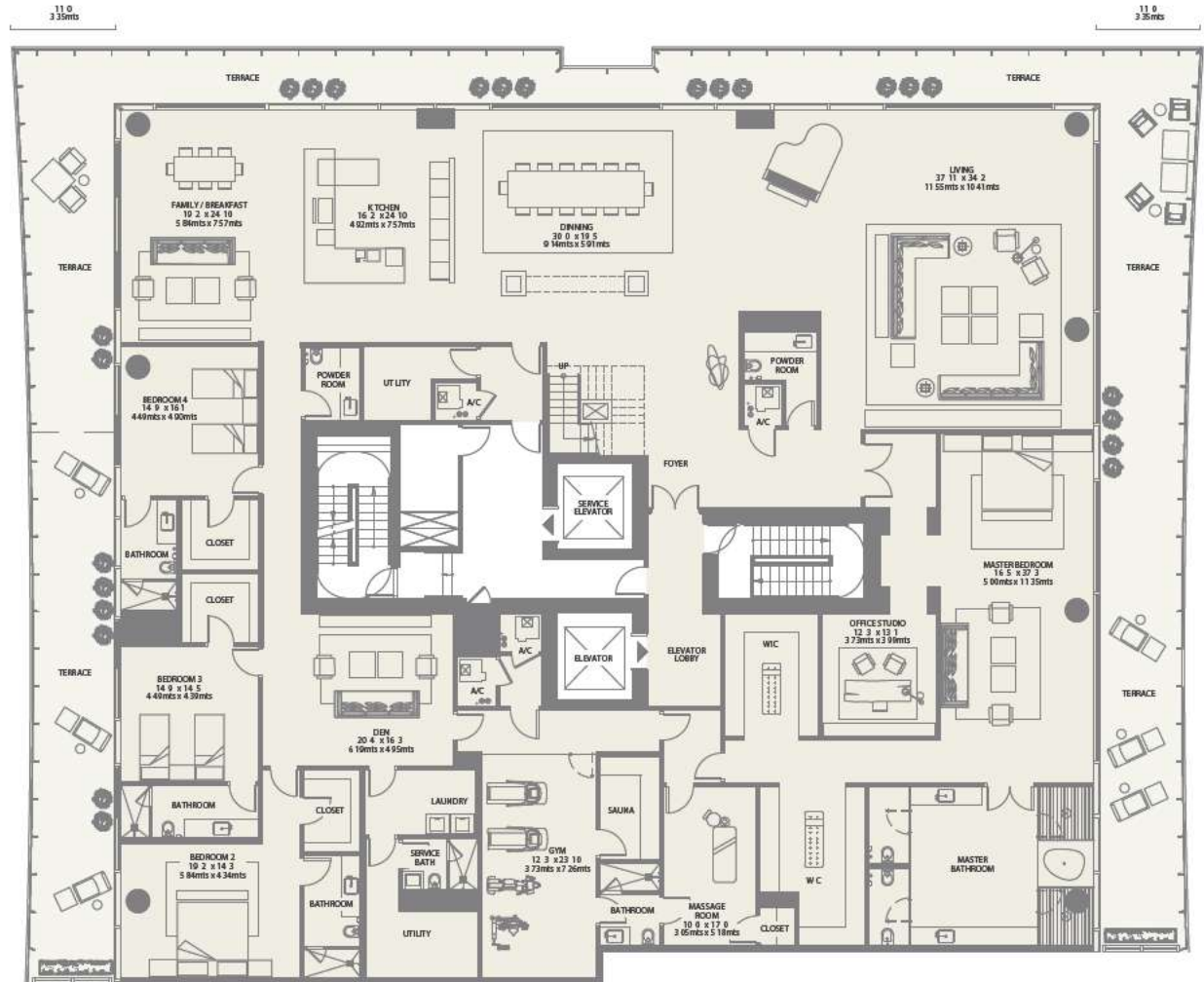
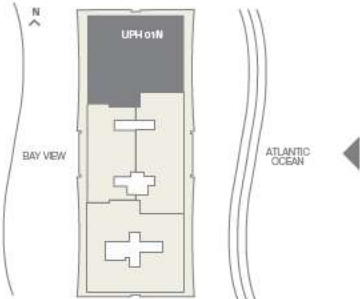
RESIDENCE 9,371 sq. ft. 870 sq. mt.

TERRACE 9,950 sq. ft. 924 sq. mt.

Total 19,321 sq. ft. 1,794 sq. mt.



EAST VIEW

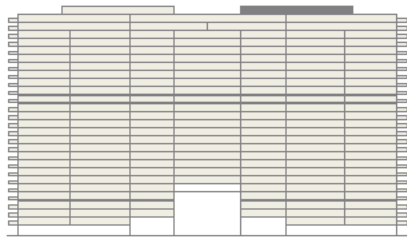


Stated dimensions are measured to the exterior boundaries of the exterior walls and the centerline of interior demising walls and in fact vary from the dimensions that would be determined by using the description and definition of the "Unit" set forth in the Declaration (which generally only includes the interior airspace between the perimeter walls and excludes interior structural components). For the square footage of the "Unit" calculated in the manner set forth in the Declaration, see Exhibit "3" to the Declaration. Additionally, measurements of rooms set forth on any floor plan are generally taken at the greatest points of each given room (as if the room were a perfect rectangle), without regard for any cutouts. Accordingly, the area of the actual room will typically be smaller than the product obtained by multiplying the stated length times width. All dimensions are approximate, and all floor plans and development plans are subject to change.

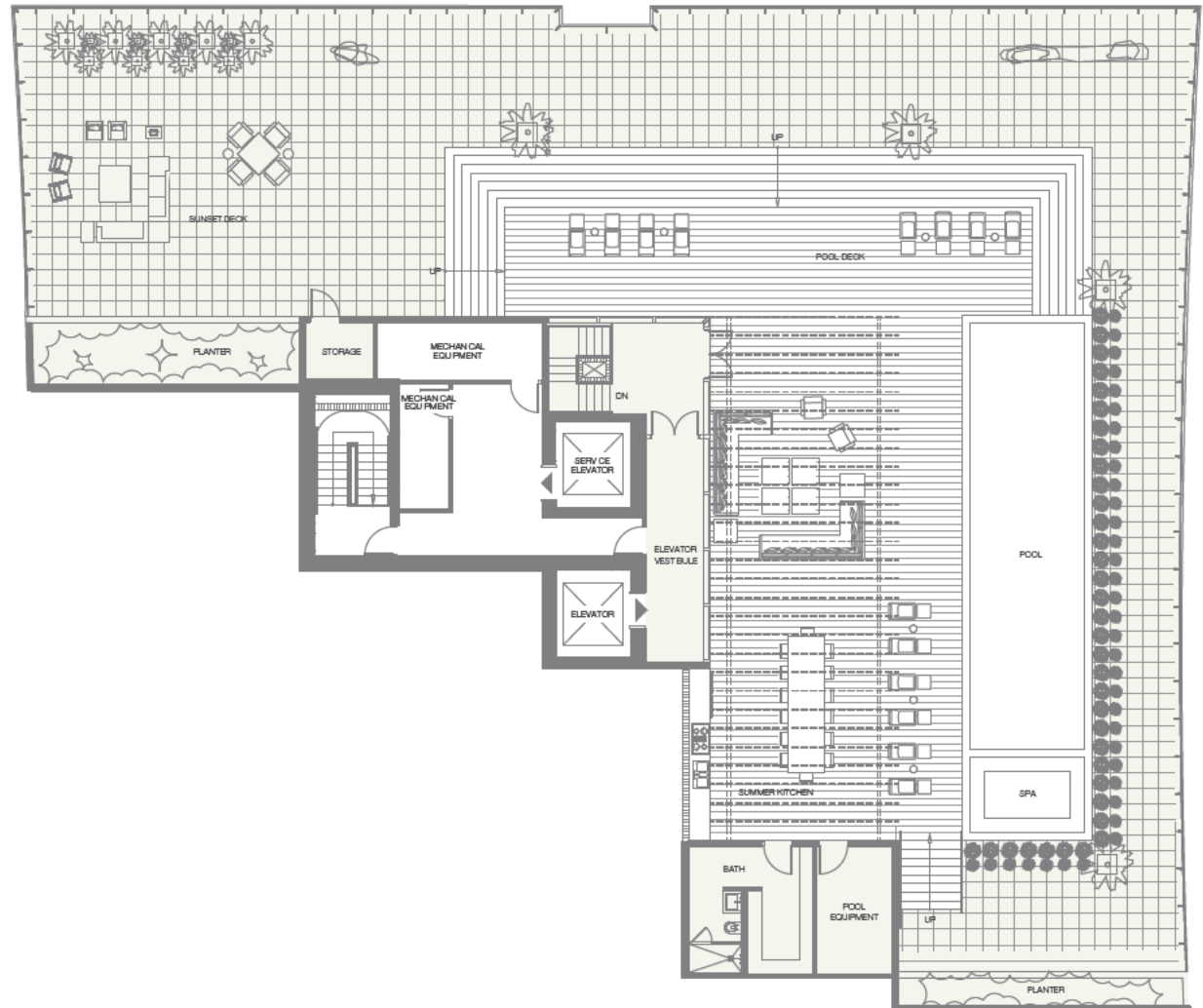
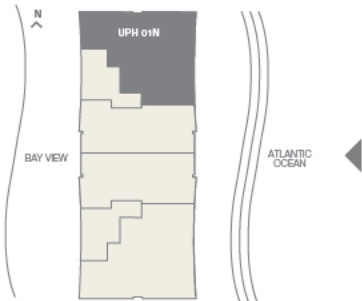
UPH01N


28th Floor - Terrace

RESIDENCE	9,371 sq. ft. 870 sq. mt.
TERRACE	9,950 sq. ft. 924 sq. mt.
Total	19,321 sq. ft. 1.794 sq. mt.



EAST VIEW



 Stated dimensions are measured to the exterior boundaries of the exterior walls and the centerline of interior demising walls and in fact vary from the dimensions that would be determined by using the description and definition of the "Unit" set forth in the Declaration (which generally only includes the interior airspace between the perimeter walls and excludes interior structural components). For the square footage of the "Unit" calculated in the manner set forth in the Declaration, see Exhibit "3" to the Declaration. Additionally, measurements of rooms set forth on any floor plan are generally taken at the greatest points of each given room (as if the room were a perfect rectangle), without regard for any cutouts. Accordingly, the area of the actual room will typically be smaller than the product obtained by multiplying the stated length times width. All dimensions are approximate, and all floor plans and development plans are subject to change.

UPH02W

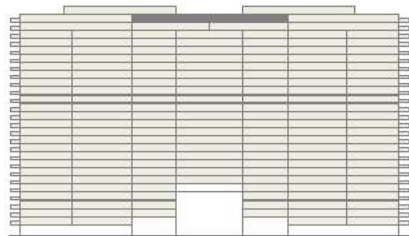
28th Floor

3 BEDROOMS - 5 1/2 BATHROOMS - FAMILY - DEN

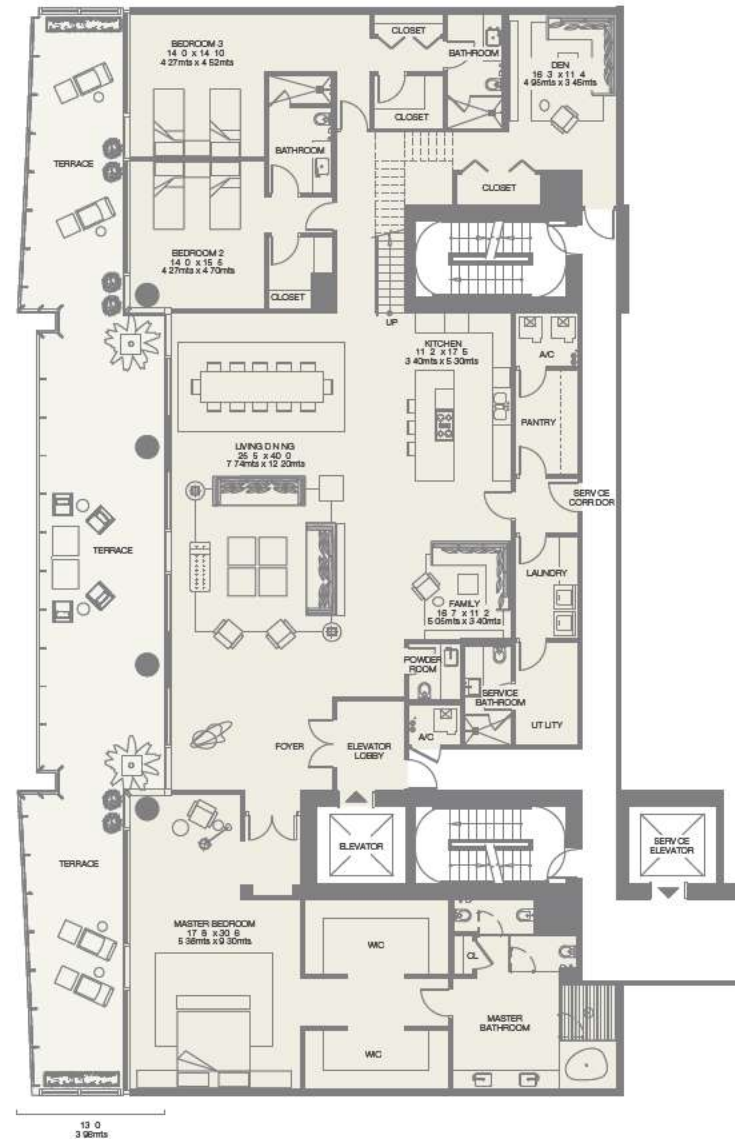
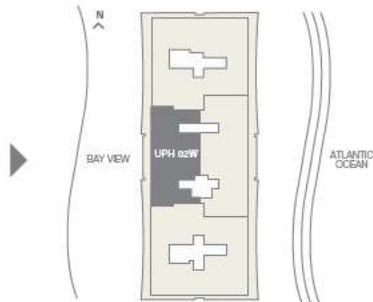
RESIDENCE 5,183 sq. ft. 481 sq. mt.

TERRACE 5,193 sq. ft. 482 sq. mt.

Total 10,376 sq. ft. 963 sq. mt.



WEST VIEW

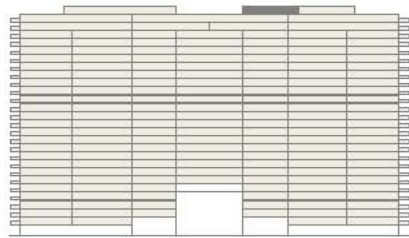


Stated dimensions are measured to the exterior boundaries of the exterior walls and the centerline of interior demising walls and in fact vary from the dimensions that would be determined by using the description and definition of the "Unit" set forth in the Declaration (which generally only includes the interior airspace between the perimeter walls and excludes interior structural components). For the square footage of the "Unit" calculated in the manner set forth in the Declaration, see Exhibit "3" to the Declaration. Additionally, measurements of rooms set forth on any floor plan are generally taken at the greatest points of each given room (as if the room were a perfect rectangle), without regard for any cutouts. Accordingly, the area of the actual room will typically be smaller than the product obtained by multiplying the stated length times width. All dimensions are approximate, and all floor plans and development plans are subject to change.

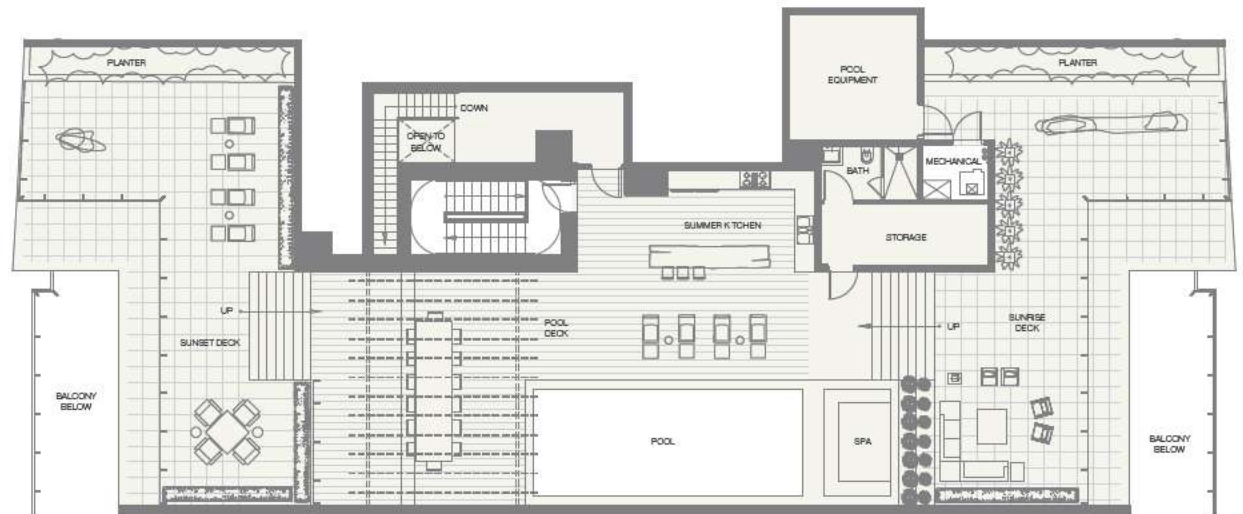
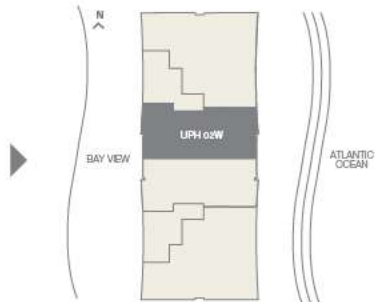
UPH02W


28th Floor - Terrace

RESIDENCE	5,183 sq. ft. 481 sq. mt.
TERRACE	5,193 sq. ft. 482 sq. mt.
Total	10,376 sq. ft. 963 sq. mt.



WEST VIEW



 Stated dimensions are measured to the exterior boundaries of the exterior walls and the centerline of interior demising walls and in fact vary from the dimensions that would be determined by using the description and definition of the "Unit" set forth in the Declaration (which generally only includes the interior airspace between the perimeter walls and excludes interior structural components). For the square footage of the "Unit" calculated in the manner set forth in the Declaration, see Exhibit "3" to the Declaration. Additionally, measurements of rooms set forth on any floor plan are generally taken at the greatest points of each given room (as if the room were a perfect rectangle), without regard for any cutouts. Accordingly, the area of the actual room will typically be smaller than the product obtained by multiplying the stated length times width. All dimensions are approximate, and all floor plans and development plans are subject to change.

UPH02E

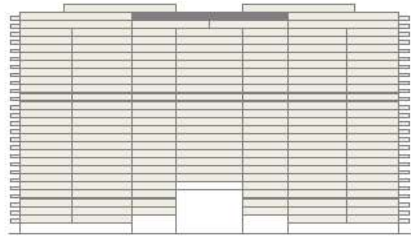
28th Floor

3 BEDROOMS - 6 1/2 BATHROOMS - FAMILY - DEN

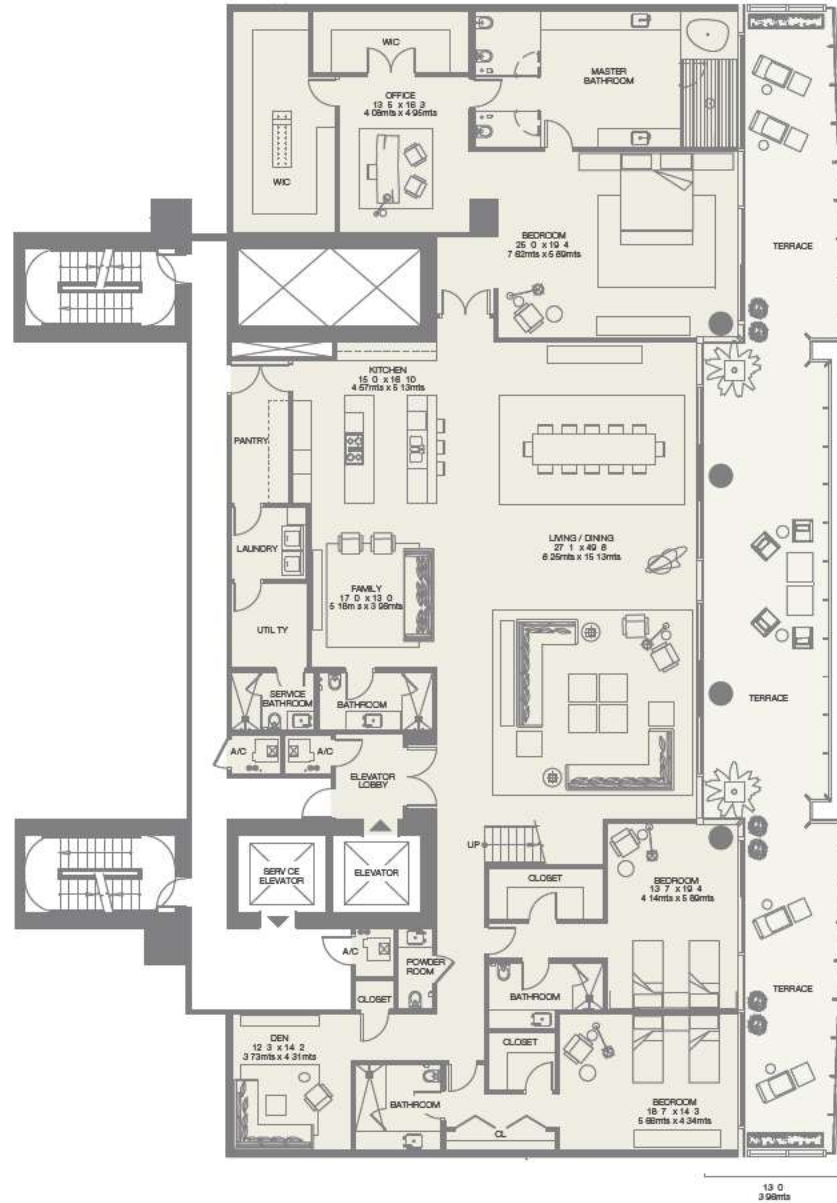
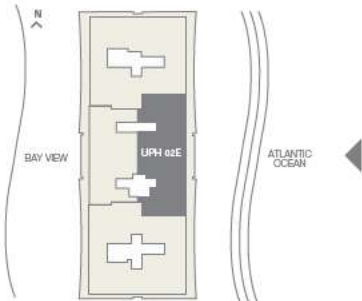
RESIDENCE 6,145 sq. ft. 570 sq. mt.

TERRACE 4,957 sq. ft. 460 sq. mt.

Total 11,102 sq. ft. 1,030 sq. mt.



EAST VIEW



Stated dimensions are measured to the exterior boundaries of the exterior walls and the centerline of interior demising walls and in fact vary from the dimensions that would be determined by using the description and definition of the "Unit" set forth in the Declaration (which generally only includes the interior airspace between the perimeter walls and excludes interior structural components). For the square footage of the "Unit" calculated in the manner set forth in the Declaration, see Exhibit "3" to the Declaration. Additionally, measurements of rooms set forth on any floor plan are generally taken at the greatest points of each given room (as if the room were a perfect rectangle), without regard for any cutouts. Accordingly, the area of the actual room will typically be smaller than the product obtained by multiplying the stated length times width. All dimensions are approximate, and all floor plans and development plans are subject to change.

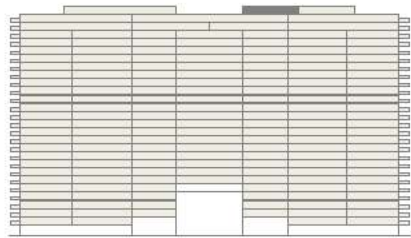
UPH02E

28th Floor - Terrace

RESIDENCE 6,145 sq. ft. 570 sq. mt.

TERRACE 4,957 sq. ft. 460 sq. mt.

Total 11,102 sq. ft. 1,030 sq. mt.



EAST VIEW

