

HIGHLIGHTS

**4 Bedrooms**  
**3 Bathrooms**  
**Powder Room**

INDOOR AREA

**2655 ft<sup>2</sup>**  
**247 m<sup>2</sup>**

OUTDOOR LIVING

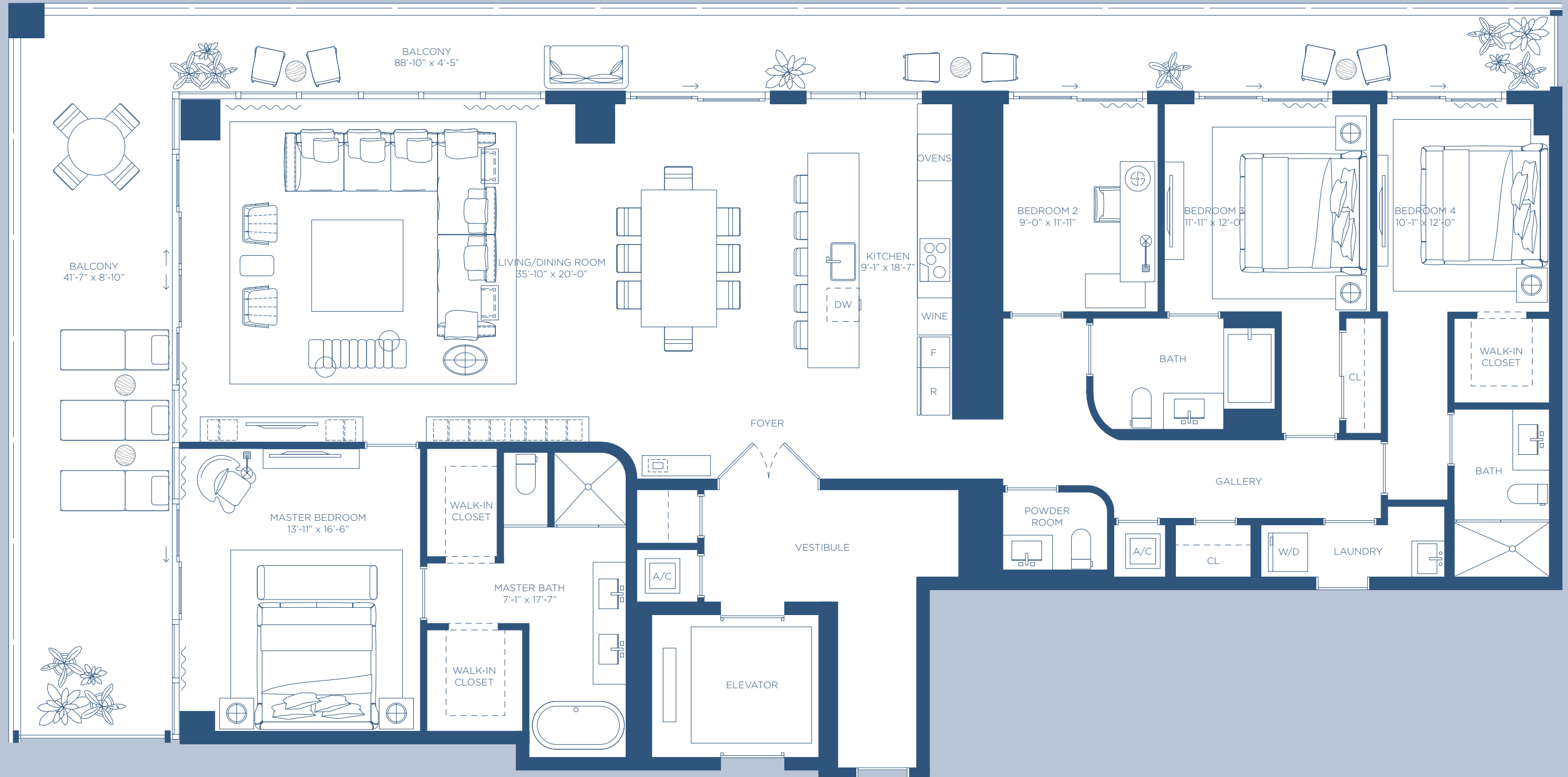
**815 ft<sup>2</sup>**  
**76 m<sup>2</sup>**

TOTAL AREA

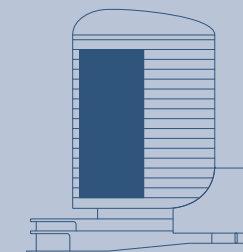
**3470 ft<sup>2</sup>**  
**322 m<sup>2</sup>**

RESIDENCE

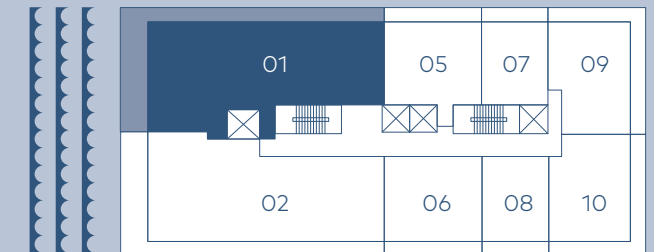
**01**



Stated square footages and dimensions are measured to the exterior boundaries of the exterior walls and the centerline of interior demising walls and in fact vary from the square footage and dimensions that would be determined by using the description and definition of the "Unit" set forth in the Declaration (which generally only includes the interior airspace between the perimeter walls and excludes all interior structural components and other common elements). This method is generally used in sales materials and is provided to allow a prospective buyer to compare the Units with units in other condominium projects that utilize the same method. Measurements of rooms set forth on this floor plan are generally taken at the farthest points of each given room (as if the room were a perfect rectangle), without regard for any cutouts or variations. Accordingly, the area of the actual room will typically be smaller than the product obtained by multiplying the stated length and width. All dimensions are estimates which will vary with actual construction, and all floor plans, specifications and other development plans are subject to change and will not necessarily accurately reflect the final plans and specifications for the development. ■



Bay





HIGHLIGHTS

**3 Bedrooms**  
**4 Bathrooms**  
**Powder Room**

INDOOR AREA

**2623 ft<sup>2</sup>**  
**244 m<sup>2</sup>**

OUTDOOR LIVING

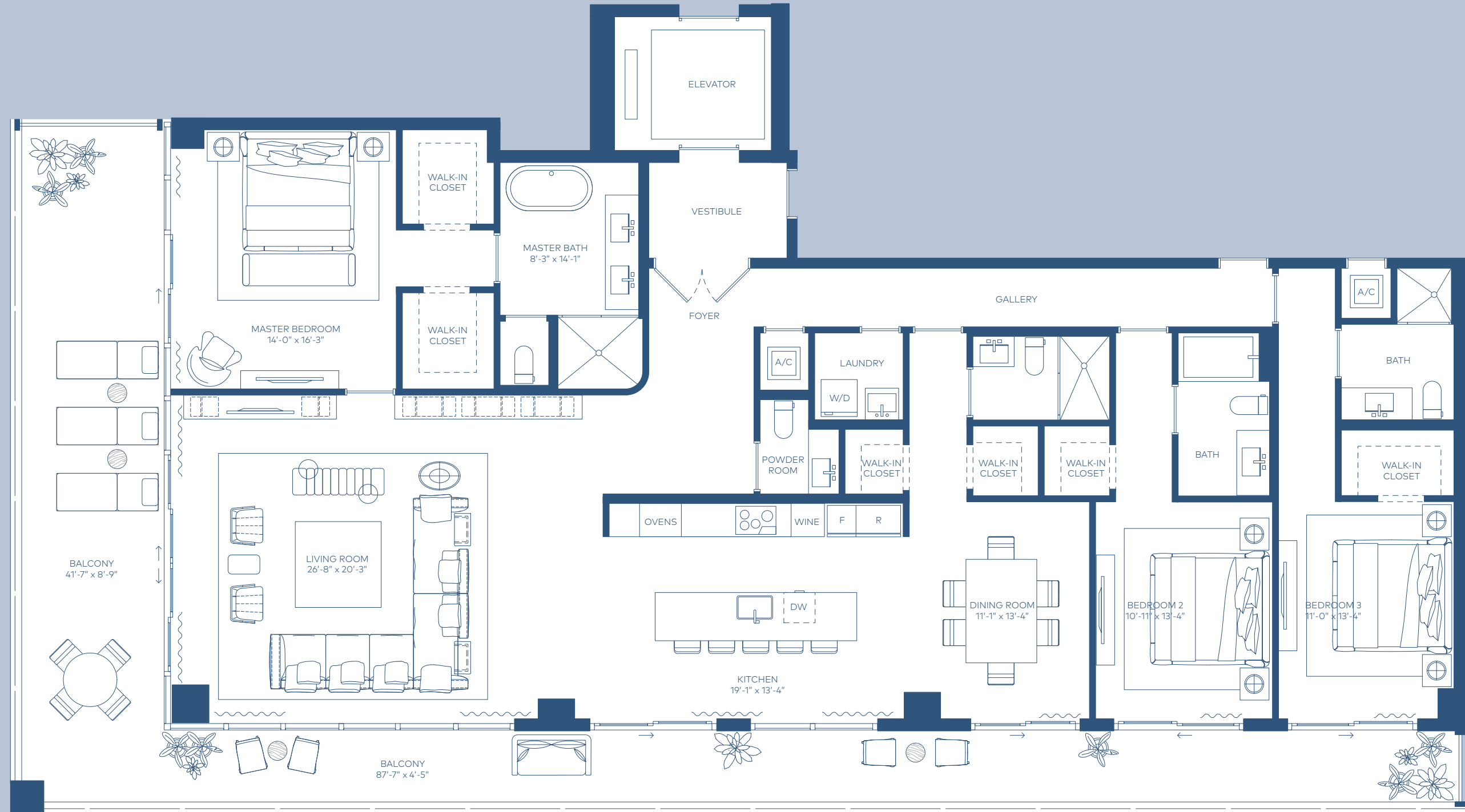
**815 ft<sup>2</sup>**  
**76 m<sup>2</sup>**

TOTAL AREA

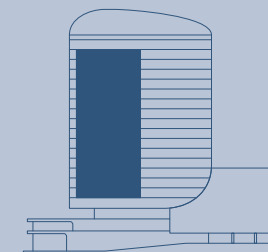
**3438 ft<sup>2</sup>**  
**319 m<sup>2</sup>**

RESIDENCE

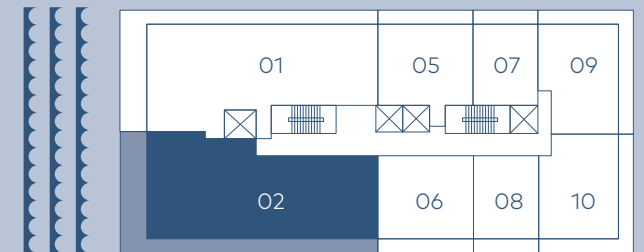
**02**

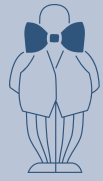


Stated square footages and dimensions are measured to the exterior boundaries of the exterior walls and the centerline of interior demising walls and in fact vary from the square footage and dimensions that would be determined by using the description and definition of the "Unit" set forth in the Declaration (which generally only includes the interior airspace between the perimeter walls and excludes all interior structural components and other common elements). This method is generally used in sales materials and is provided to allow a prospective buyer to compare the Units with units in other condominium projects that utilize the same method. Measurements of rooms set forth on this floor plan are generally taken at the farthest points of each given room (as if the room were a perfect rectangle), without regard for any cutouts or variations. Accordingly, the area of the actual room will typically be smaller than the product obtained by multiplying the stated length and width. All dimensions are estimates which will vary with actual construction, and all floor plans, specifications and other development plans are subject to change and will not necessarily accurately reflect the final plans and specifications for the development. ■



Bay





# RESIDENCE 05



### HIGHLIGHTS

**2 Bedrooms**  
**2 Bathrooms**

### INDOOR AREA

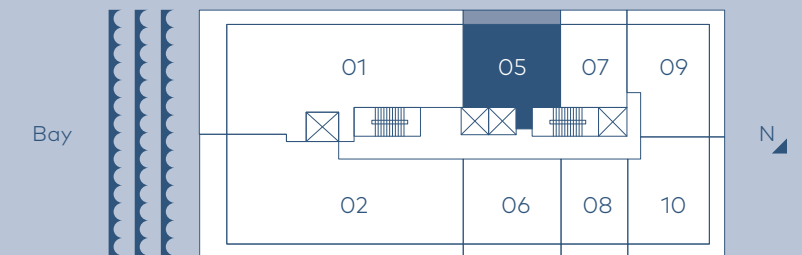
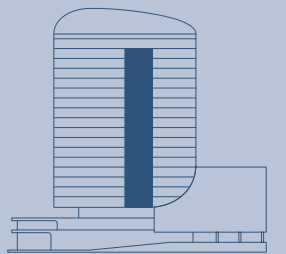
**1016 ft<sup>2</sup>**  
**94 m<sup>2</sup>**

### OUTDOOR LIVING

**170 ft<sup>2</sup>**  
**16 m<sup>2</sup>**

### TOTAL AREA

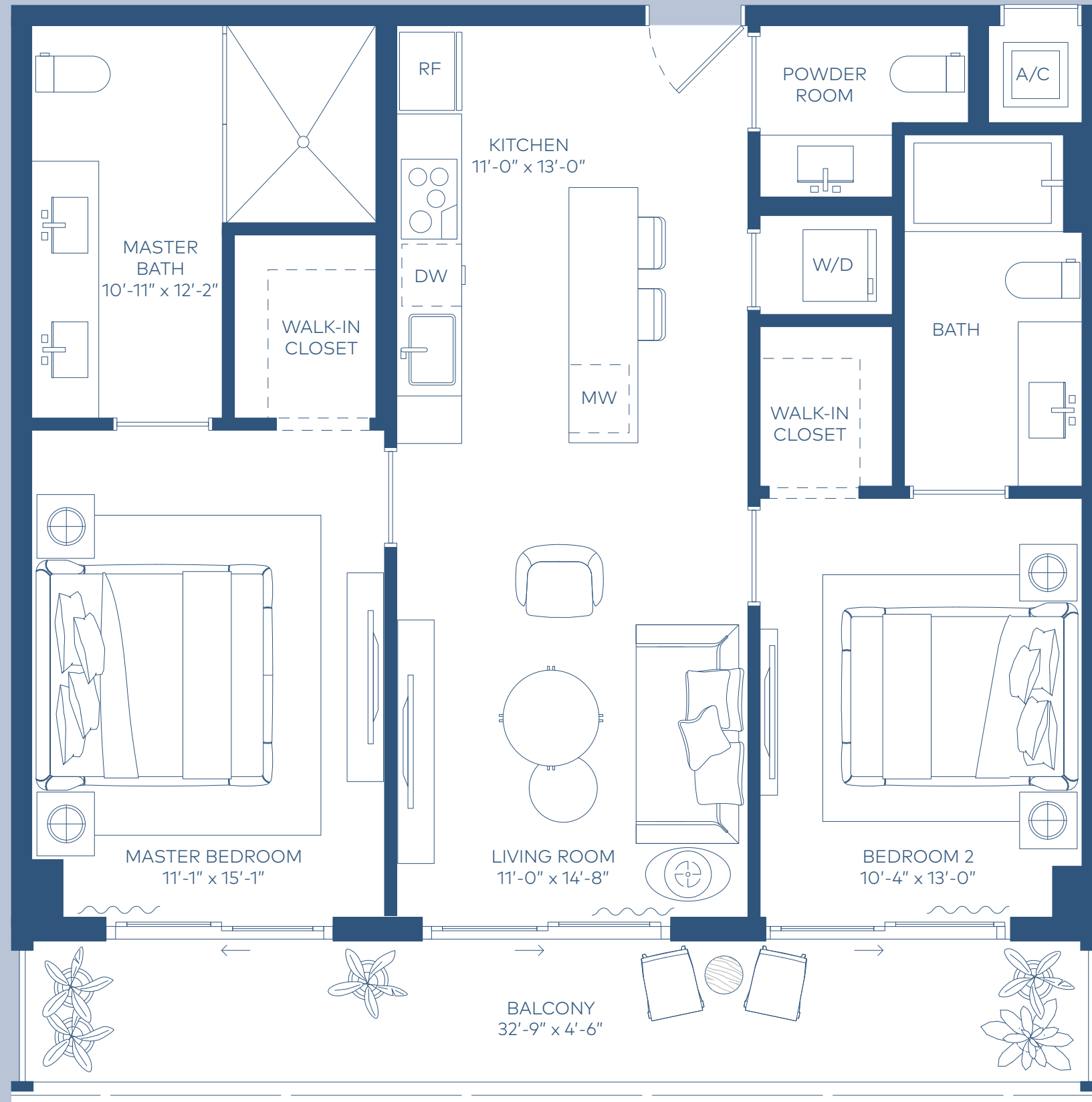
**1186 ft<sup>2</sup>**  
**110 m<sup>2</sup>**



Stated square footages and dimensions are measured to the exterior boundaries of the exterior walls and the centerline of interior demising walls and in fact vary from the square footage and dimensions that would be determined by using the description and definition of the "Unit" set forth in the Declaration (which generally only includes the interior airspace between the perimeter walls and excludes all interior structural components and other common elements). This method is generally used in sales materials and is provided to allow a prospective buyer to compare the Units with units in other condominium projects that utilize the same method. Measurements of rooms set forth on this floor plan are generally taken at the farthest points of each given room (as if the room were a perfect rectangle), without regard for any cutouts or variations. Accordingly, the area of the actual room will typically be smaller than the product obtained by multiplying the stated length and width. All dimensions are estimates which will vary with actual construction, and all floor plans, specifications and other development plans are subject to change and will not necessarily accurately reflect the final plans and specifications for the development. ■



# RESIDENCE 06



### HIGHLIGHTS

**2 Bedrooms**  
**2 Bathrooms**  
**Powder Room**

### INDOOR AREA

**964 ft<sup>2</sup>**  
**90 m<sup>2</sup>**

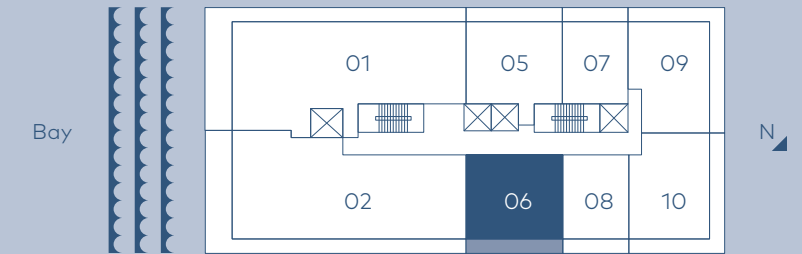
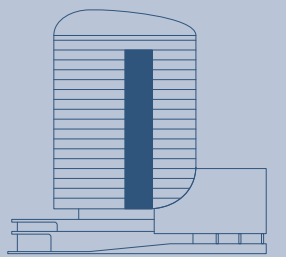
### OUTDOOR LIVING

**170 ft<sup>2</sup>**  
**16 m<sup>2</sup>**

### TOTAL AREA

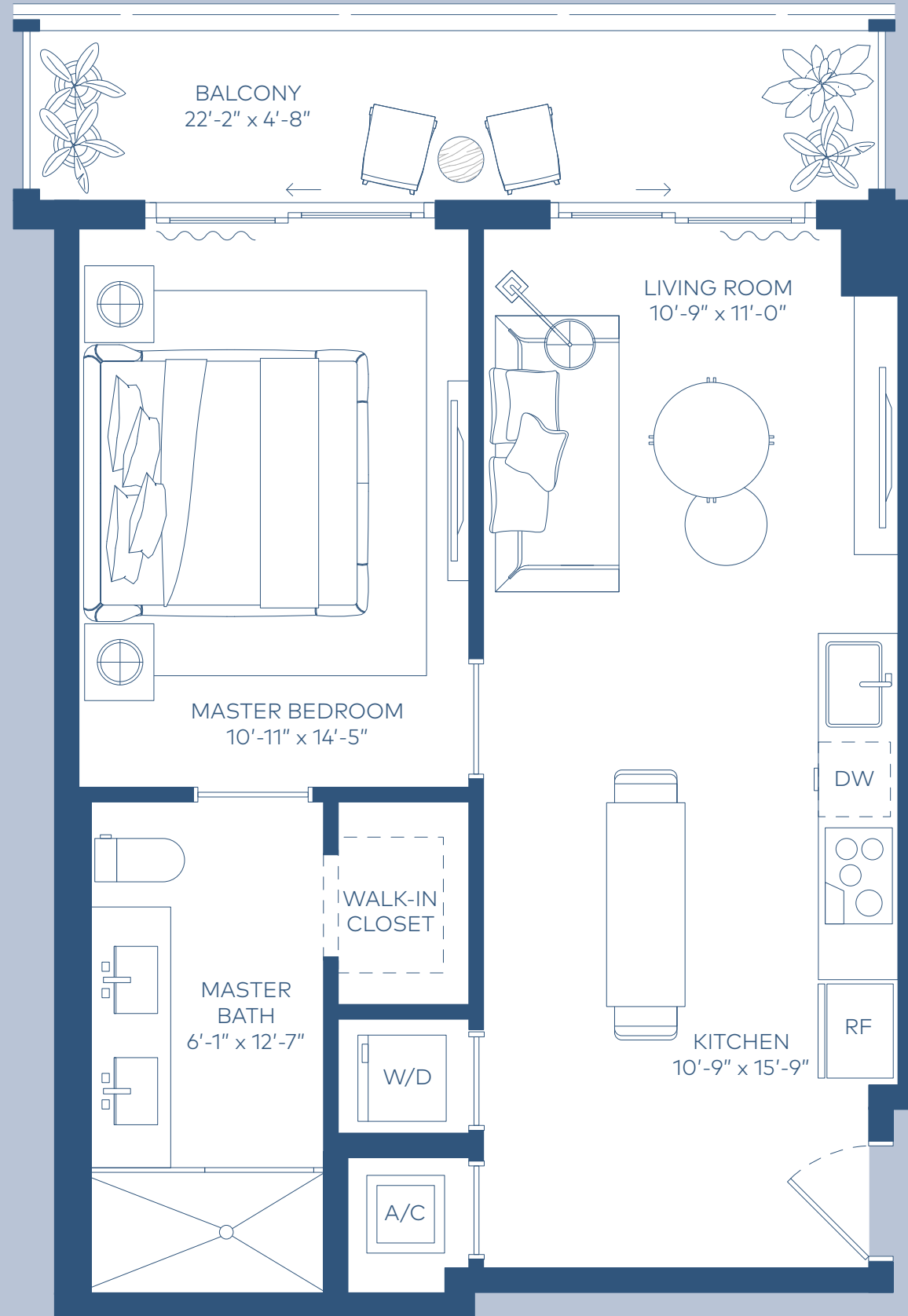
**1134 ft<sup>2</sup>**  
**105 m<sup>2</sup>**

Stated square footages and dimensions are measured to the exterior boundaries of the exterior walls and the centerline of interior demising walls and in fact vary from the square footage and dimensions that would be determined by using the description and definition of the "Unit" set forth in the Declaration (which generally only includes the interior airspace between the perimeter walls and excludes all interior structural components and other common elements). This method is generally used in sales materials and is provided to allow a prospective buyer to compare the Units with units in other condominium projects that utilize the same method. Measurements of rooms set forth on this floor plan are generally taken at the farthest points of each given room (as if the room were a perfect rectangle), without regard for any cutouts or variations. Accordingly, the area of the actual room will typically be smaller than the product obtained by multiplying the stated length and width. All dimensions are estimates which will vary with actual construction, and all floor plans, specifications and other development plans are subject to change and will not necessarily accurately reflect the final plans and specifications for the development. ■





# RESIDENCE 07



### HIGHLIGHTS

**1 Bedroom**  
**1 Bathroom**

### INDOOR AREA

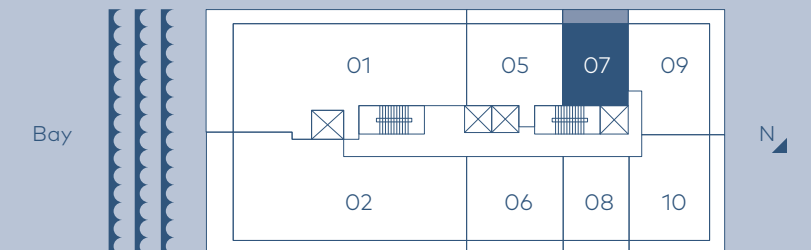
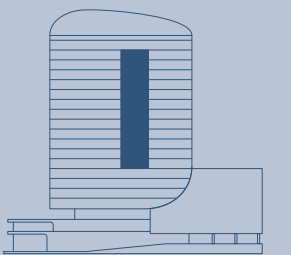
**650 ft<sup>2</sup>**  
**60 m<sup>2</sup>**

### OUTDOOR LIVING

**114 ft<sup>2</sup>**  
**11 m<sup>2</sup>**

### TOTAL AREA

**764 ft<sup>2</sup>**  
**71 m<sup>2</sup>**



Stated square footages and dimensions are measured to the exterior boundaries of the exterior walls and the centerline of interior demising walls and in fact vary from the square footage and dimensions that would be determined by using the description and definition of the "Unit" set forth in the Declaration (which generally only includes the interior airspace between the perimeter walls and excludes all interior structural components and other common elements). This method is generally used in sales materials and is provided to allow a prospective buyer to compare the Units with units in other condominium projects that utilize the same method. Measurements of rooms set forth on this floor plan are generally taken at the farthest points of each given room (as if the room were a perfect rectangle), without regard for any cutouts or variations. Accordingly, the area of the actual room will typically be smaller than the product obtained by multiplying the stated length and width. All dimensions are estimates which will vary with actual construction, and all floor plans, specifications and other development plans are subject to change and will not necessarily accurately reflect the final plans and specifications for the development. ■



# RESIDENCE 08

### HIGHLIGHTS

**1 Bedroom**  
**1 Bathroom**

### INDOOR AREA

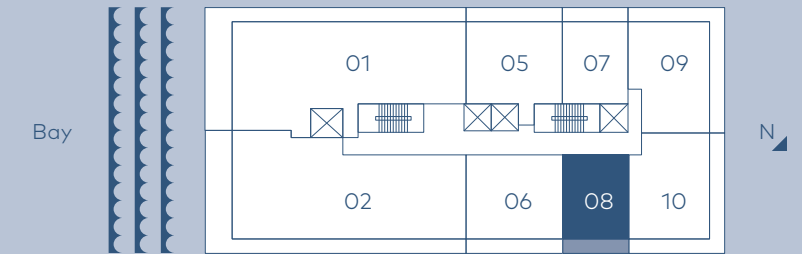
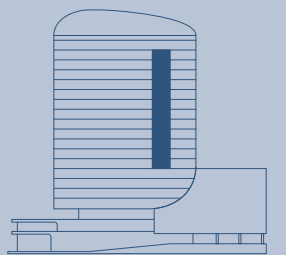
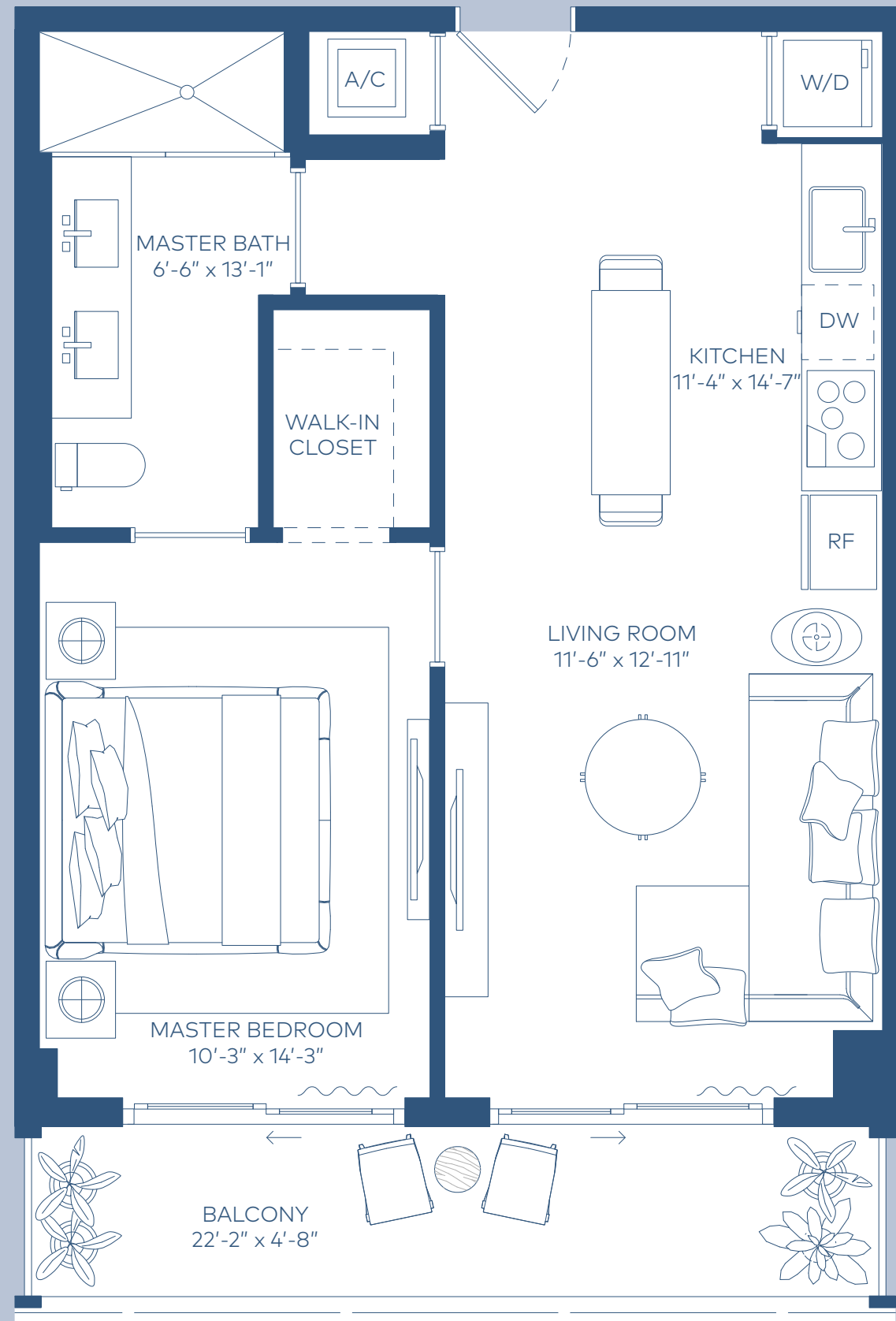
**651 ft<sup>2</sup>**  
**60 m<sup>2</sup>**

### OUTDOOR LIVING

**112 ft<sup>2</sup>**  
**10 m<sup>2</sup>**

### TOTAL AREA

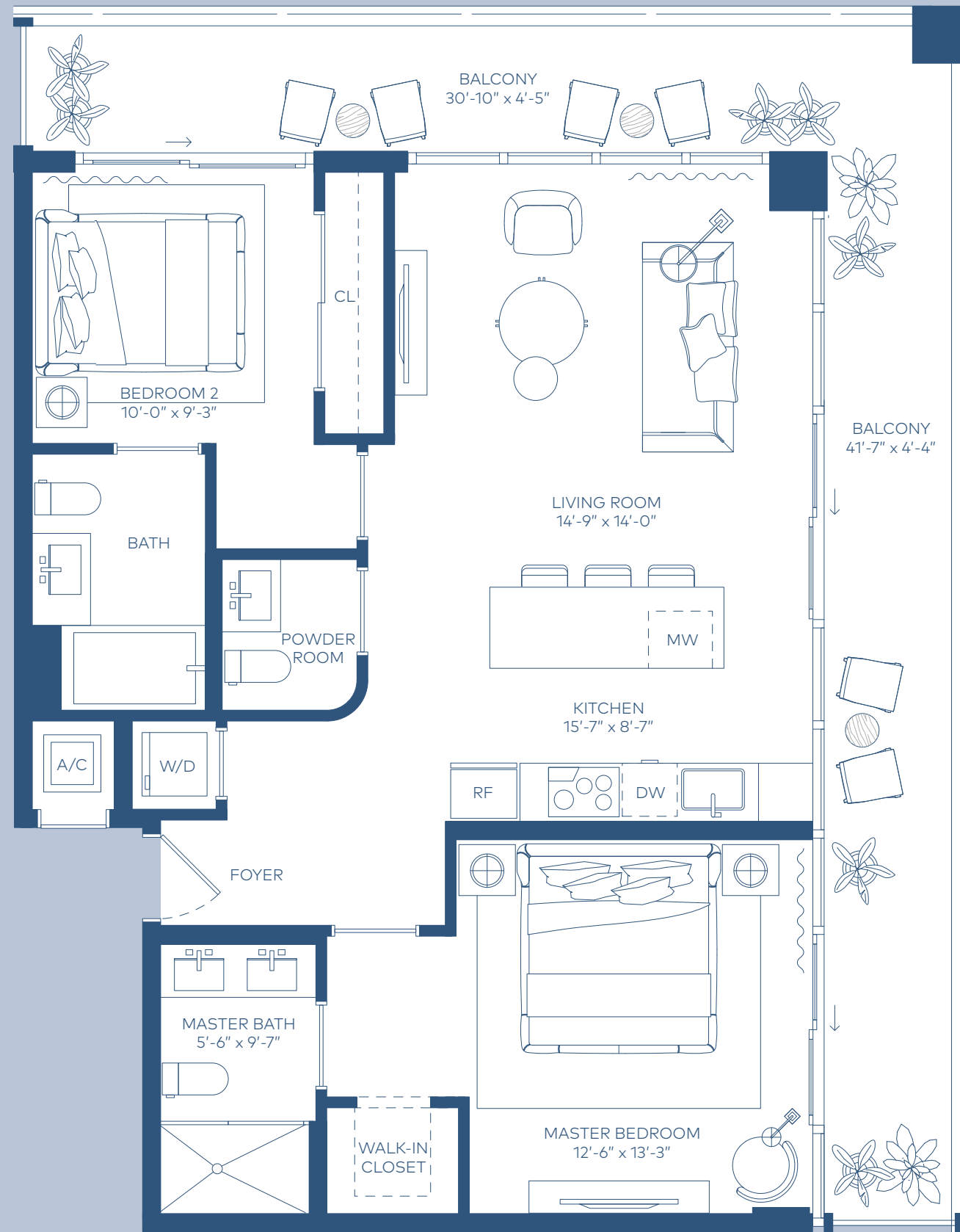
**763 ft<sup>2</sup>**  
**71 m<sup>2</sup>**



Stated square footages and dimensions are measured to the exterior boundaries of the exterior walls and the centerline of interior demising walls and in fact vary from the square footage and dimensions that would be determined by using the description and definition of the "Unit" set forth in the Declaration (which generally only includes the interior airspace between the perimeter walls and excludes all interior structural components and other common elements). This method is generally used in sales materials and is provided to allow a prospective buyer to compare the Units with units in other condominium projects that utilize the same method. Measurements of rooms set forth on this floor plan are generally taken at the farthest points of each given room (as if the room were a perfect rectangle), without regard for any cutouts or variations. Accordingly, the area of the actual room will typically be smaller than the product obtained by multiplying the stated length and width. All dimensions are estimates which will vary with actual construction, and all floor plans, specifications and other development plans are subject to change and will not necessarily accurately reflect the final plans and specifications for the development. ■



# RESIDENCE 09



### HIGHLIGHTS

**2 Bedrooms**  
**2 Bathrooms**  
**Powder Room**

### INDOOR AREA

**995 ft<sup>2</sup>**  
**92 m<sup>2</sup>**

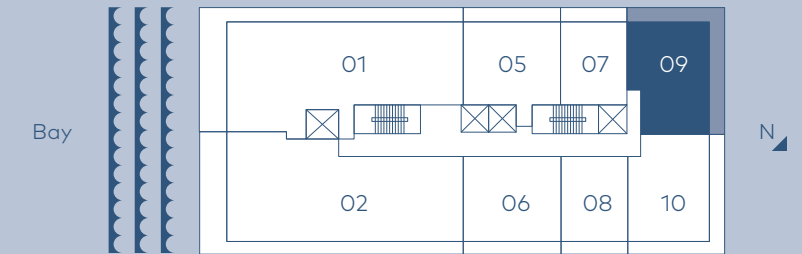
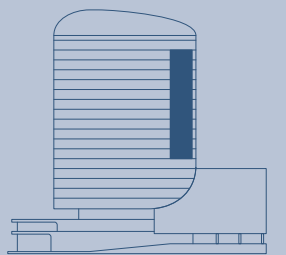
### OUTDOOR LIVING

**360ft<sup>2</sup>**  
**33 m<sup>2</sup>**

### TOTAL AREA

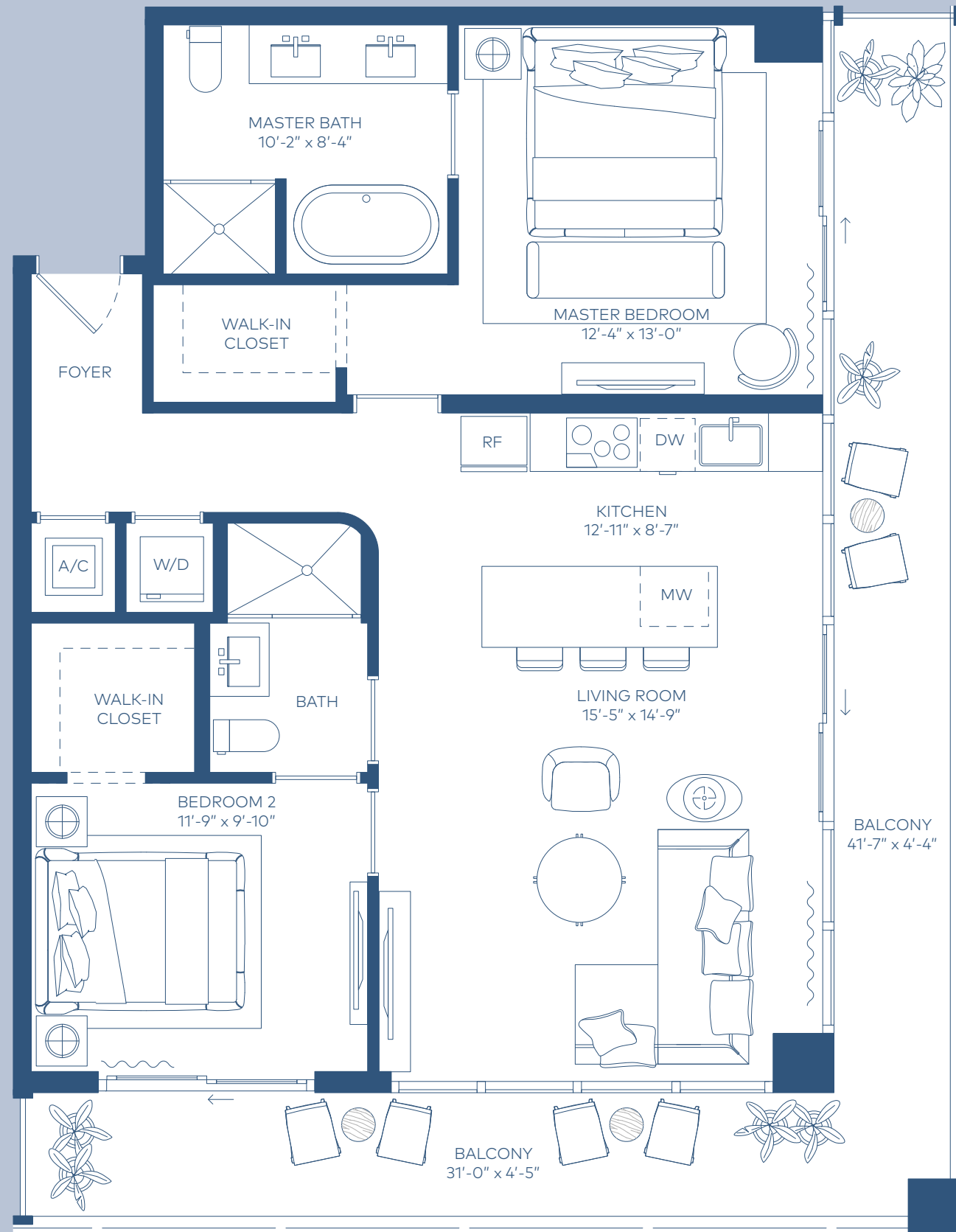
**1355 ft<sup>2</sup>**  
**126 m<sup>2</sup>**

Stated square footages and dimensions are measured to the exterior boundaries of the exterior walls and the centerline of interior demising walls and in fact vary from the square footage and dimensions that would be determined by using the description and definition of the "Unit" set forth in the Declaration (which generally only includes the interior airspace between the perimeter walls and excludes all interior structural components and other common elements). This method is generally used in sales materials and is provided to allow a prospective buyer to compare the Units with units in other condominium projects that utilize the same method. Measurements of rooms set forth on this floor plan are generally taken at the farthest points of each given room (as if the room were a perfect rectangle), without regard for any cutouts or variations. Accordingly, the area of the actual room will typically be smaller than the product obtained by multiplying the stated length and width. All dimensions are estimates which will vary with actual construction, and all floor plans, specifications and other development plans are subject to change and will not necessarily accurately reflect the final plans and specifications for the development. ■





# RESIDENCE 10



### HIGHLIGHTS

**2 Bedrooms**  
**2 Bathrooms**

### INDOOR AREA

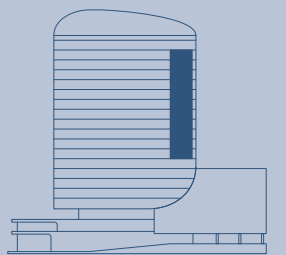
**1023 ft<sup>2</sup>**  
**95 m<sup>2</sup>**

### OUTDOOR LIVING

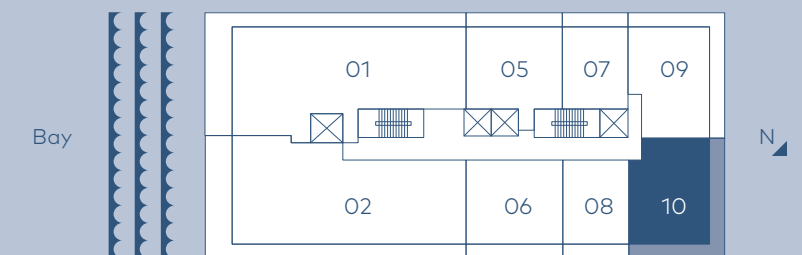
**360ft<sup>2</sup>**  
**33 m<sup>2</sup>**

### TOTAL AREA

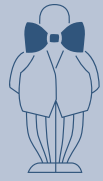
**1383 ft<sup>2</sup>**  
**128 m<sup>2</sup>**



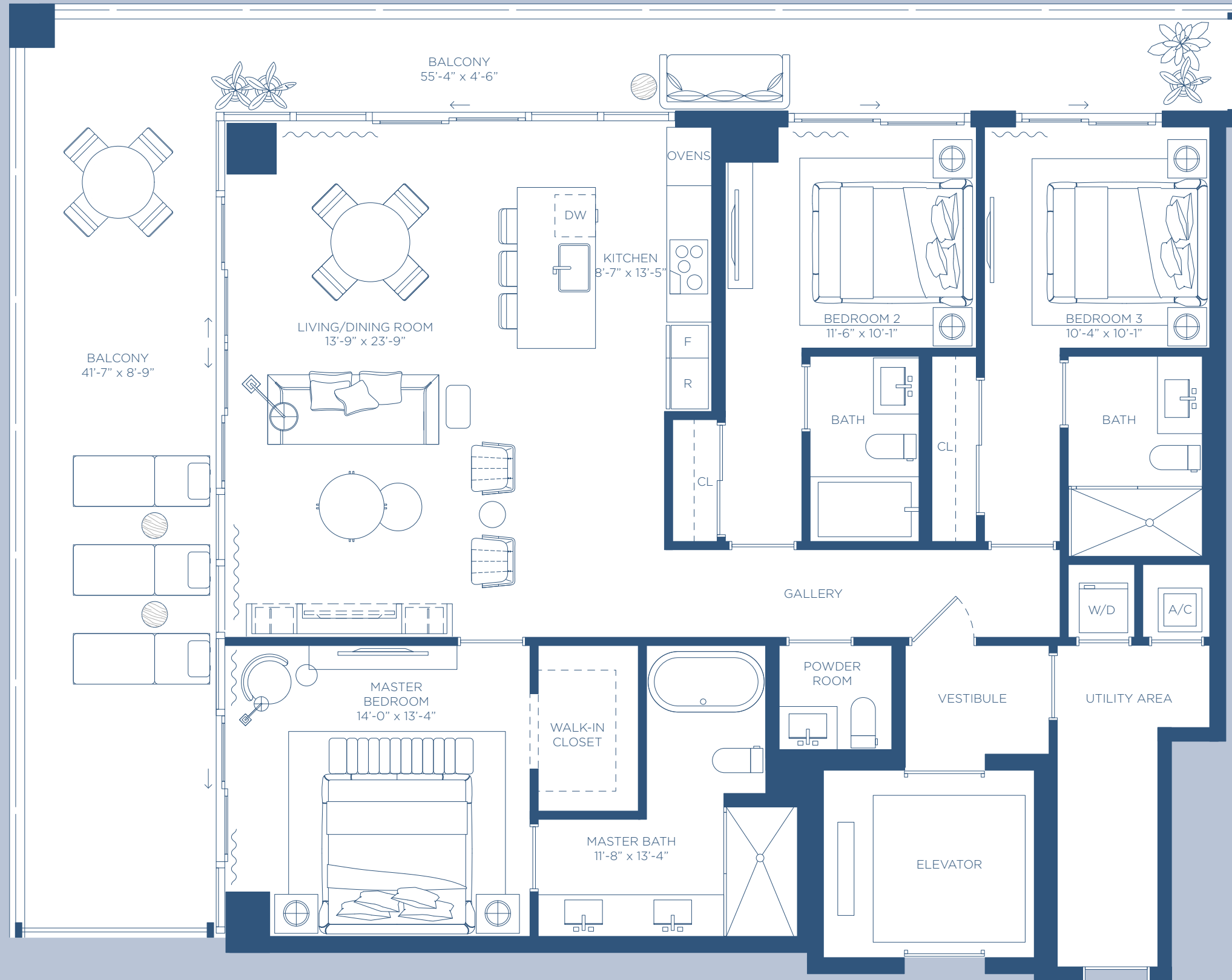
Stated square footages and dimensions are measured to the exterior boundaries of the exterior walls and the centerline of interior demising walls and in fact vary from the square footage and dimensions that would be determined by using the description and definition of the "Unit" set forth in the Declaration (which generally only includes the interior airspace between the perimeter walls and excludes all interior structural components and other common elements). This method is generally used in sales materials and is provided to allow a prospective buyer to compare the Units with units in other condominium projects that utilize the same method. Measurements of rooms set forth on this floor plan are generally taken at the farthest points of each given room (as if the room were a perfect rectangle), without regard for any cutouts or variations. Accordingly, the area of the actual room will typically be smaller than the product obtained by multiplying the stated length and width. All dimensions are estimates which will vary with actual construction, and all floor plans, specifications and other development plans are subject to change and will not necessarily accurately reflect the final plans and specifications for the development. ■







# RESIDENCE 401



### HIGHLIGHTS

**3 Bedrooms**  
**3 Bathrooms**  
**Powder Room**

### INDOOR AREA

**1699 ft<sup>2</sup>**  
**158 m<sup>2</sup>**

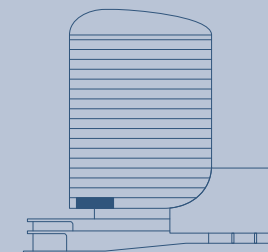
### OUTDOOR LIVING

**640ft<sup>2</sup>**  
**59 m<sup>2</sup>**

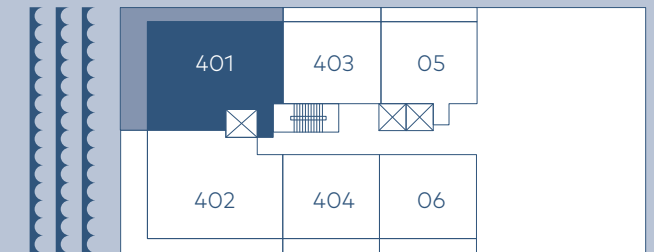
### TOTAL AREA

**2339 ft<sup>2</sup>**  
**217 m<sup>2</sup>**

Stated square footages and dimensions are measured to the exterior boundaries of the exterior walls and the centerline of interior demising walls and in fact vary from the square footage and dimensions that would be determined by using the description and definition of the "Unit" set forth in the Declaration (which generally only includes the interior airspace between the perimeter walls and excludes all interior structural components and other common elements). This method is generally used in sales materials and is provided to allow a prospective buyer to compare the Units with units in other condominium projects that utilize the same method. Measurements of rooms set forth on this floor plan are generally taken at the farthest points of each given room (as if the room were a perfect rectangle), without regard for any cutouts or variations. Accordingly, the area of the actual room will typically be smaller than the product obtained by multiplying the stated length and width. All dimensions are estimates which will vary with actual construction, and all floor plans, specifications and other development plans are subject to change and will not necessarily accurately reflect the final plans and specifications for the development. ■

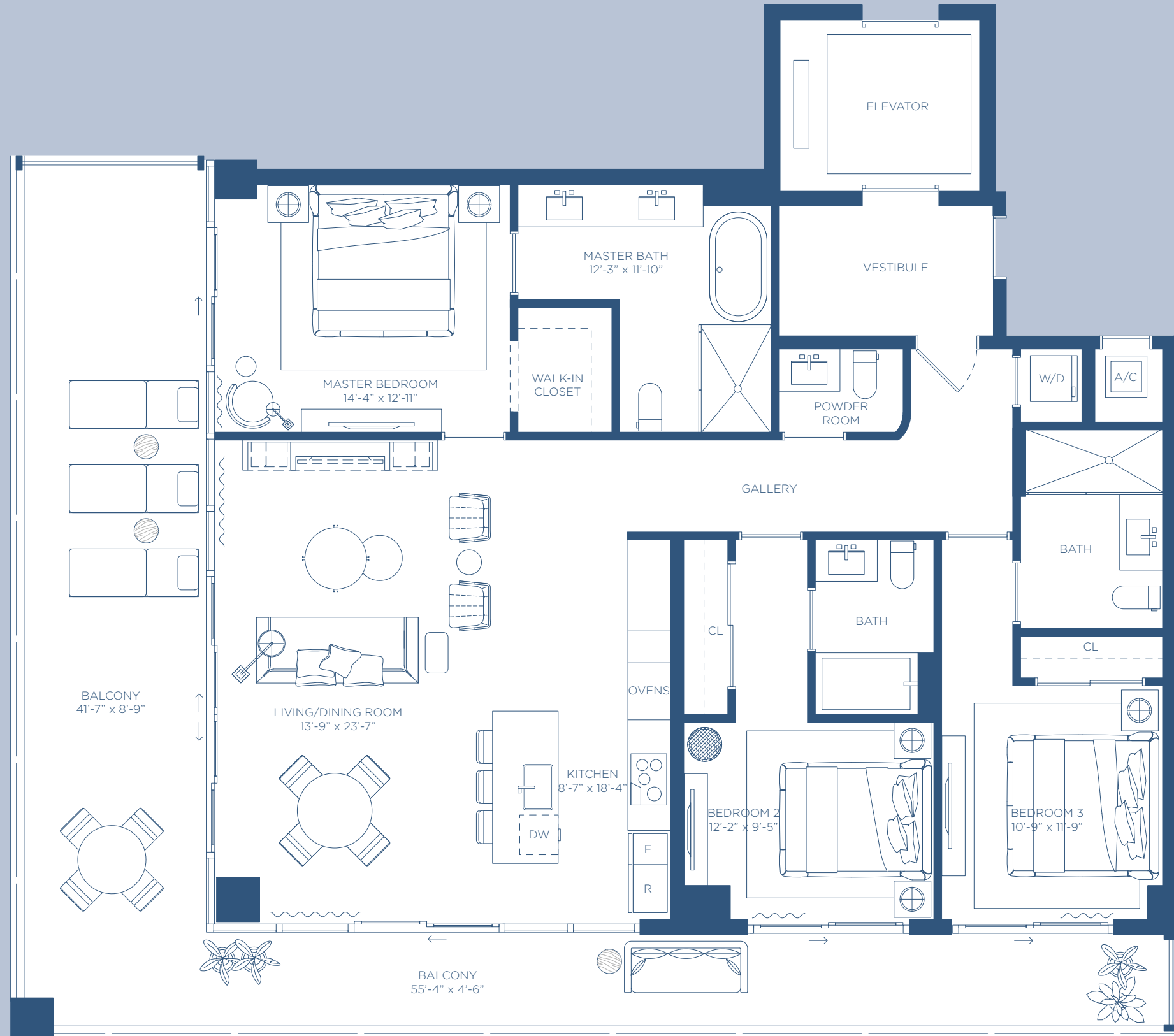


Bay





# RESIDENCE 402



### HIGHLIGHTS

**3 Bedrooms**  
**3 Bathrooms**  
**Powder Room**

### INDOOR AREA

**1649 ft<sup>2</sup>**  
**153 m<sup>2</sup>**

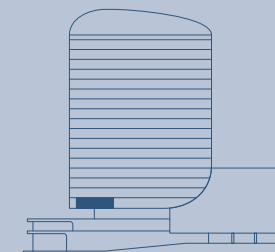
### OUTDOOR LIVING

**645 ft<sup>2</sup>**  
**60 m<sup>2</sup>**

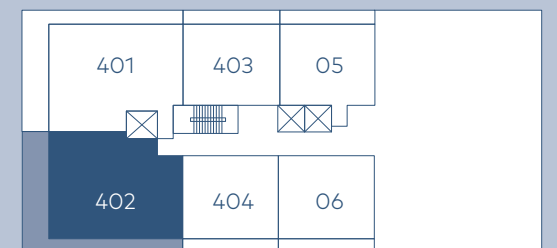
### TOTAL AREA

**2294 ft<sup>2</sup>**  
**213 m<sup>2</sup>**

Stated square footages and dimensions are measured to the exterior boundaries of the exterior walls and the centerline of interior demising walls and in fact vary from the square footage and dimensions that would be determined by using the description and definition of the "Unit" set forth in the Declaration (which generally only includes the interior airspace between the perimeter walls and excludes all interior structural components and other common elements). This method is generally used in sales materials and is provided to allow a prospective buyer to compare the Units with units in other condominium projects that utilize the same method. Measurements of rooms set forth on this floor plan are generally taken at the farthest points of each given room (as if the room were a perfect rectangle), without regard for any cutouts or variations. Accordingly, the area of the actual room will typically be smaller than the product obtained by multiplying the stated length and width. All dimensions are estimates which will vary with actual construction, and all floor plans, specifications and other development plans are subject to change and will not necessarily accurately reflect the final plans and specifications for the development. ■

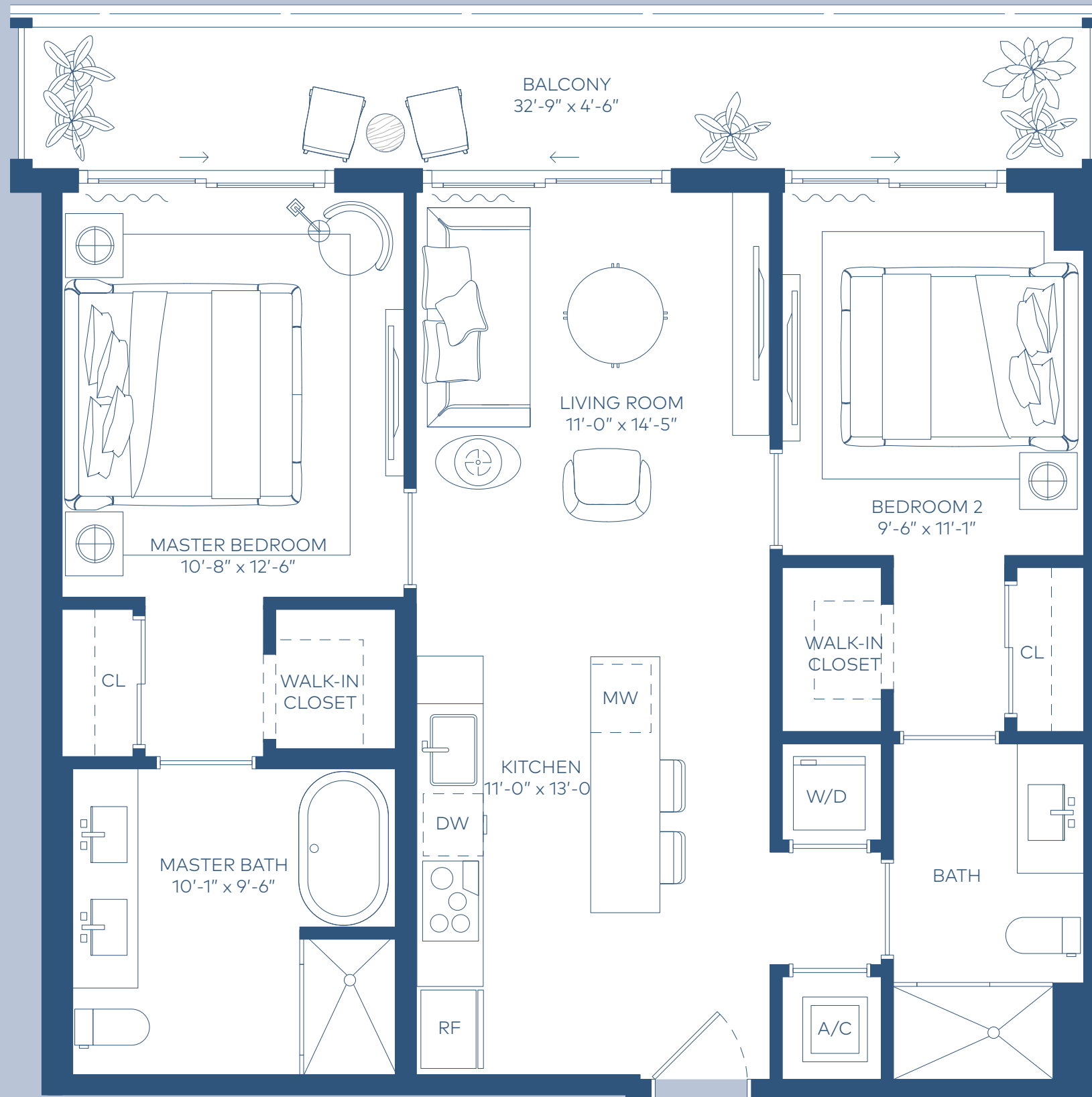


Bay





# RESIDENCE 403



### HIGHLIGHTS

**2 Bedrooms**  
**2 Bathrooms**

### INDOOR AREA

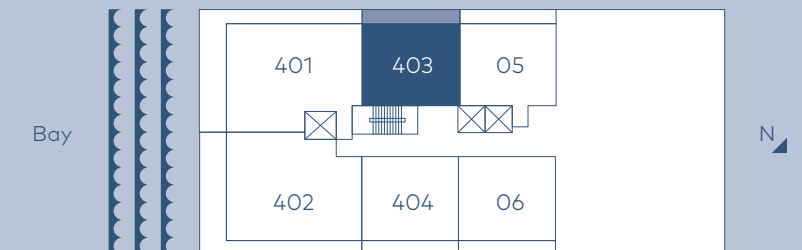
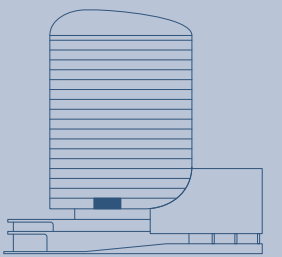
**965 ft<sup>2</sup>**  
**90 m<sup>2</sup>**

### OUTDOOR LIVING

**170 ft<sup>2</sup>**  
**16 m<sup>2</sup>**

### TOTAL AREA

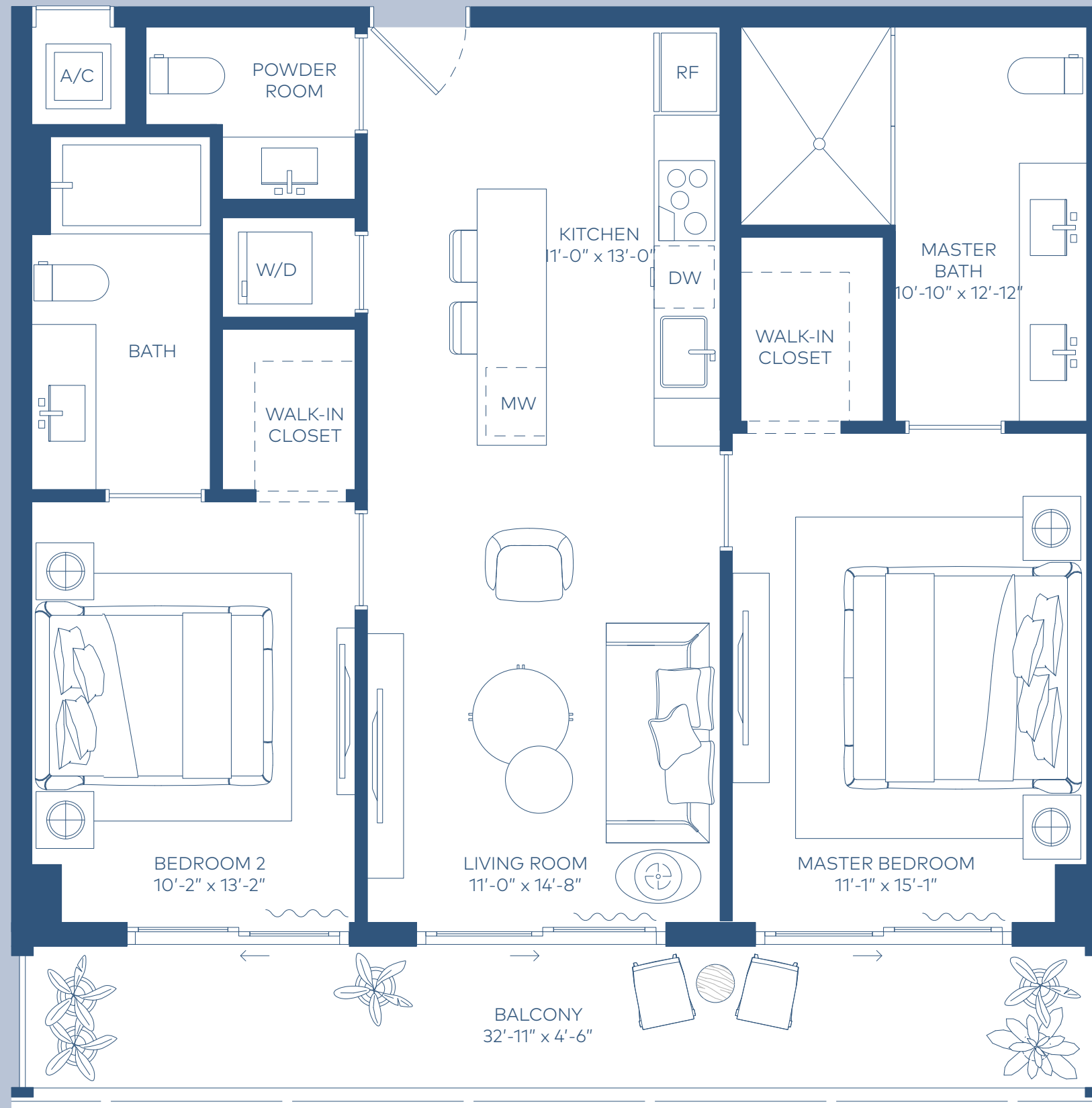
**1135 ft<sup>2</sup>**  
**105 m<sup>2</sup>**



Stated square footages and dimensions are measured to the exterior boundaries of the exterior walls and the centerline of interior demising walls and in fact vary from the square footage and dimensions that would be determined by using the description and definition of the "Unit" set forth in the Declaration (which generally only includes the interior airspace between the perimeter walls and excludes all interior structural components and other common elements). This method is generally used in sales materials and is provided to allow a prospective buyer to compare the Units with units in other condominium projects that utilize the same method. Measurements of rooms set forth on this floor plan are generally taken at the farthest points of each given room (as if the room were a perfect rectangle), without regard for any cutouts or variations. Accordingly, the area of the actual room will typically be smaller than the product obtained by multiplying the stated length and width. All dimensions are estimates which will vary with actual construction, and all floor plans, specifications and other development plans are subject to change and will not necessarily accurately reflect the final plans and specifications for the development. ■



# RESIDENCE 404



### HIGHLIGHTS

**2 Bedrooms**  
**2 Bathrooms**  
**Powder Room**

### INDOOR AREA

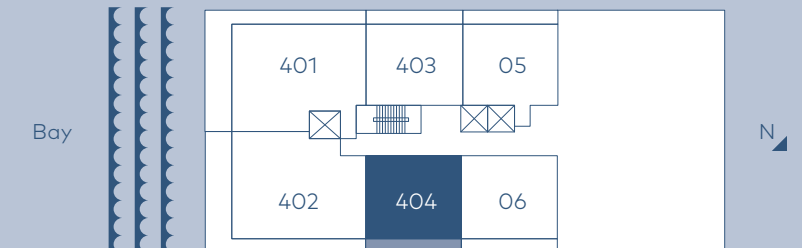
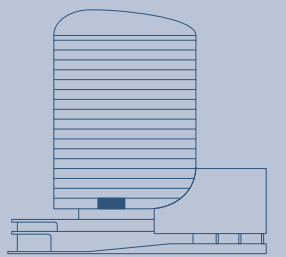
**966 ft<sup>2</sup>**  
**90 m<sup>2</sup>**

### OUTDOOR LIVING

**170ft<sup>2</sup>**  
**16 m<sup>2</sup>**

### TOTAL AREA

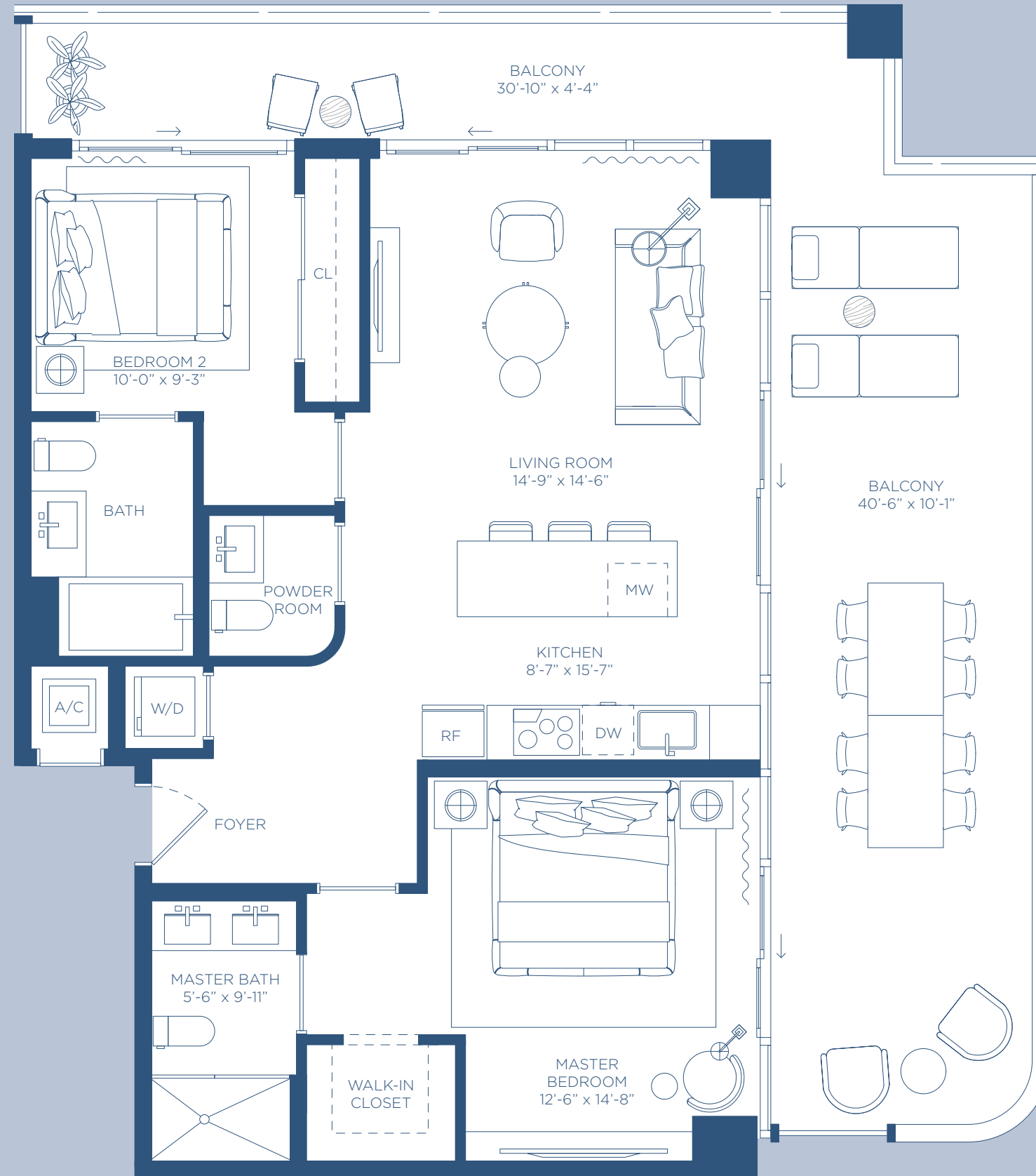
**1136 ft<sup>2</sup>**  
**106 m<sup>2</sup>**



Stated square footages and dimensions are measured to the exterior boundaries of the exterior walls and the centerline of interior demising walls and in fact vary from the square footage and dimensions that would be determined by using the description and definition of the "Unit" set forth in the Declaration (which generally only includes the interior airspace between the perimeter walls and excludes all interior structural components and other common elements). This method is generally used in sales materials and is provided to allow a prospective buyer to compare the Units with units in other condominium projects that utilize the same method. Measurements of rooms set forth on this floor plan are generally taken at the farthest points of each given room (as if the room were a perfect rectangle), without regard for any cutouts or variations. Accordingly, the area of the actual room will typically be smaller than the product obtained by multiplying the stated length and width. All dimensions are estimates which will vary with actual construction, and all floor plans, specifications and other development plans are subject to change and will not necessarily accurately reflect the final plans and specifications for the development. ■



RESIDENCE  
**09 LANAI**



**HIGHLIGHTS**

**2 Bedrooms**  
**2 Bathrooms**  
**Powder Room**

**INDOOR AREA**

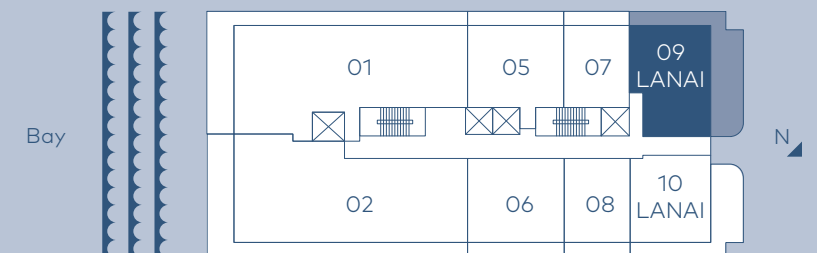
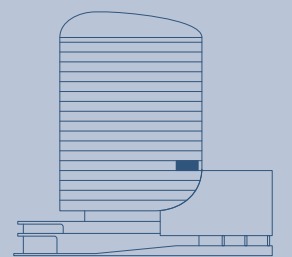
**1030 ft<sup>2</sup>**  
**96 m<sup>2</sup>**

**OUTDOOR LIVING**

**568 ft<sup>2</sup>**  
**53 m<sup>2</sup>**

**TOTAL AREA**

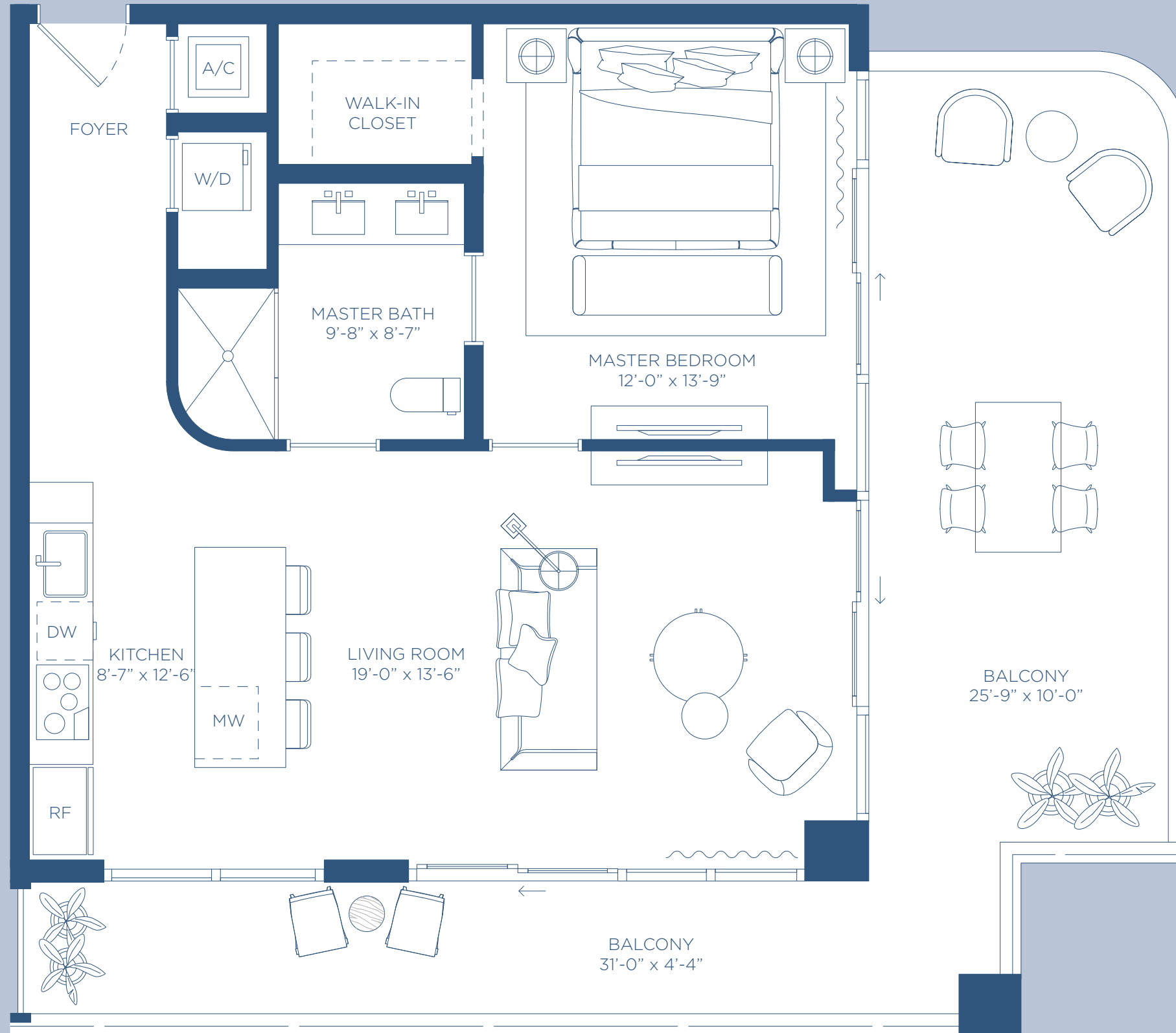
**1598 ft<sup>2</sup>**  
**148 m<sup>2</sup>**



Stated square footages and dimensions are measured to the exterior boundaries of the exterior walls and the centerline of interior demising walls and in fact vary from the square footage and dimensions that would be determined by using the description and definition of the "Unit" set forth in the Declaration (which generally only includes the interior airspace between the perimeter walls and excludes all interior structural components and other common elements). This method is generally used in sales materials and is provided to allow a prospective buyer to compare the Units with units in other condominium projects that utilize the same method. Measurements of rooms set forth on this floor plan are generally taken at the farthest points of each given room (as if the room were a perfect rectangle), without regard for any cutouts or variations. Accordingly, the area of the actual room will typically be smaller than the product obtained by multiplying the stated length and width. All dimensions are estimates which will vary with actual construction, and all floor plans, specifications and other development plans are subject to change and will not necessarily accurately reflect the final plans and specifications for the development. ■



# 10 LANAI



HIGHLIGHTS

**1 Bedroom**  
**1 Bathroom**

INDOOR AREA

**815 ft<sup>2</sup>**  
**76 m<sup>2</sup>**

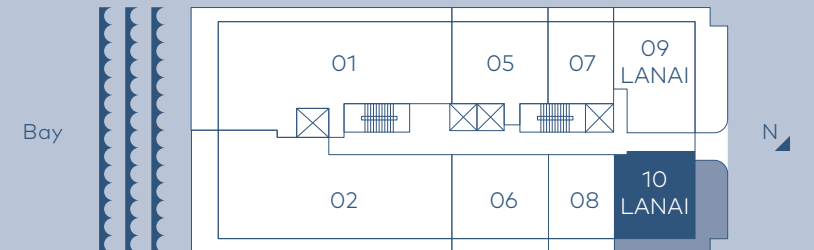
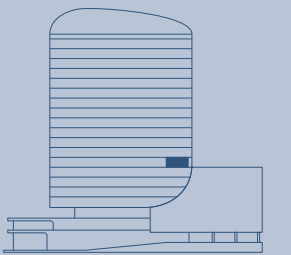
OUTDOOR LIVING

**460ft<sup>2</sup>**  
**43 m<sup>2</sup>**

TOTAL AREA

**1275 ft<sup>2</sup>**  
**118 m<sup>2</sup>**

Stated square footages and dimensions are measured to the exterior boundaries of the exterior walls and the centerline of interior demising walls and in fact vary from the square footage and dimensions that would be determined by using the description and definition of the "Unit" set forth in the Declaration (which generally only includes the interior airspace between the perimeter walls and excludes all interior structural components and other common elements). This method is generally used in sales materials and is provided to allow a prospective buyer to compare the Units with units in other condominium projects that utilize the same method. Measurements of rooms set forth on this floor plan are generally taken at the farthest points of each given room (as if the room were a perfect rectangle), without regard for any cutouts or variations. Accordingly, the area of the actual room will typically be smaller than the product obtained by multiplying the stated length and width. All dimensions are estimates which will vary with actual construction, and all floor plans, specifications and other development plans are subject to change and will not necessarily accurately reflect the final plans and specifications for the development. ■





HIGHLIGHTS

**5 Bedrooms**  
**4 Bathrooms**  
**Powder Room**

INDOOR AREA

**3645 ft<sup>2</sup>**  
**339 m<sup>2</sup>**

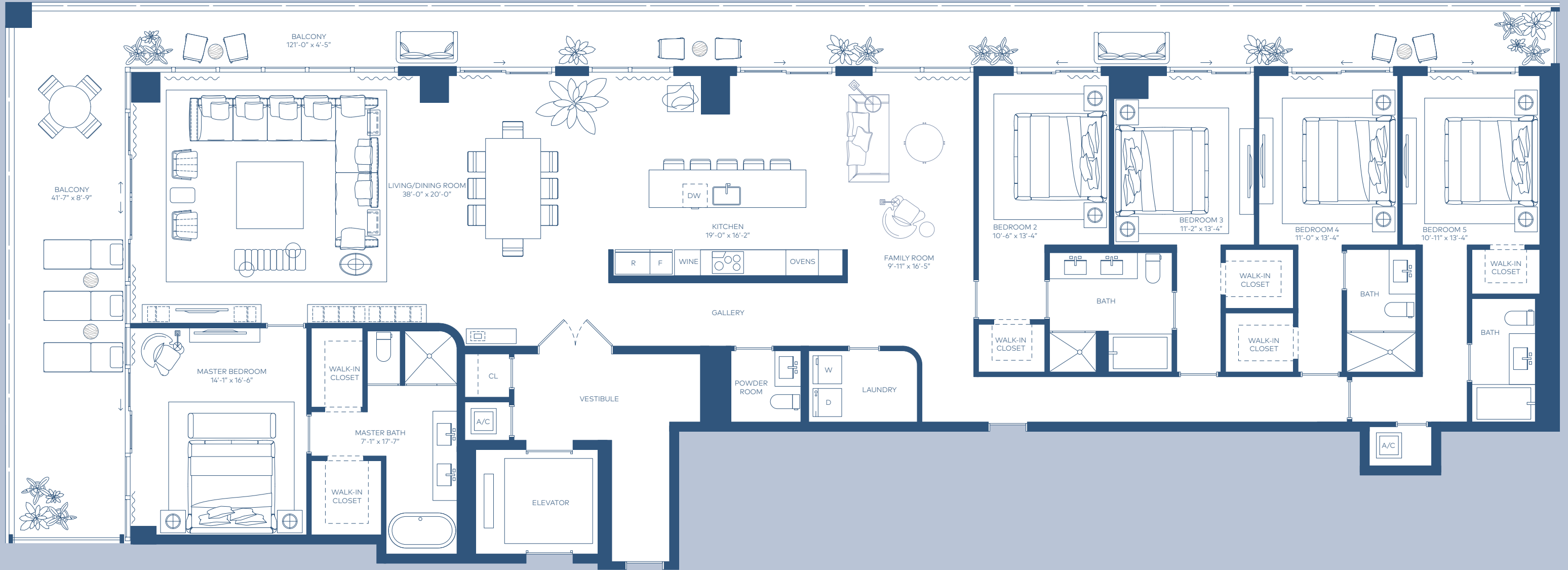
OUTDOOR LIVING


**985 ft<sup>2</sup>**  
**92 m<sup>2</sup>**

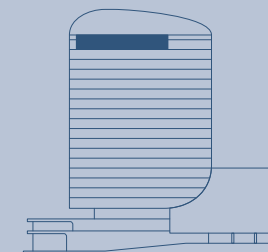
TOTAL AREA

**4630 ft<sup>2</sup>**  
**430 m<sup>2</sup>**

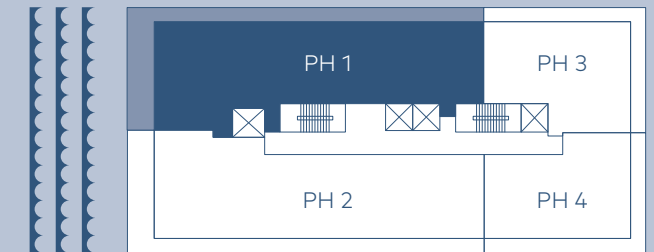
RESIDENCE  
**PH 1**



Stated square footages and dimensions are measured to the exterior boundaries of the exterior walls and the centerline of interior demising walls and in fact vary from the square footage and dimensions that would be determined by using the description and definition of the "Unit" set forth in the Declaration (which generally only includes the interior airspace between the perimeter walls and excludes all interior structural components and other common elements). This method is generally used in sales materials and is provided to allow a prospective buyer to compare the Units with units in other condominium projects that utilize the same method. Measurements of rooms set forth on this floor plan are generally taken at the farthest points of each given room (as if the room were a perfect rectangle), without regard for any cutouts or variations. Accordingly, the area of the actual room will typically be smaller than the product obtained by multiplying the stated length and width. All dimensions are estimates which will vary with actual construction, and all floor plans, specifications and other development plans are subject to change and will not necessarily accurately reflect the final plans and specifications for the development. 



Bay





HIGHLIGHTS

**5 Bedrooms**  
**4 Bathrooms**  
**Powder Room**

INDOOR AREA

**3590 ft<sup>2</sup>**  
**334 m<sup>2</sup>**

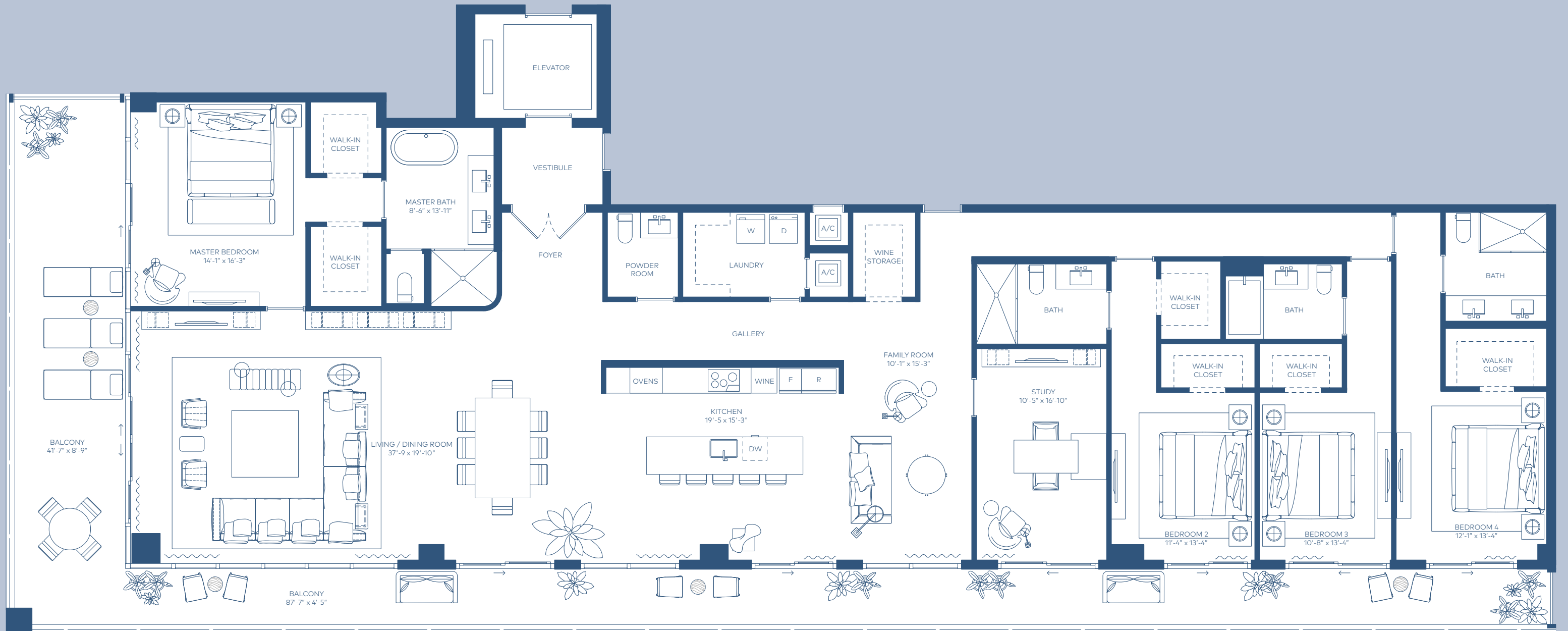
OUTDOOR LIVING


**985 ft<sup>2</sup>**  
**92 m<sup>2</sup>**

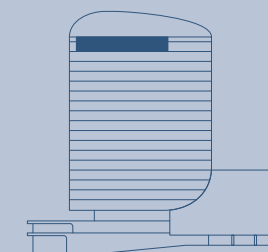
TOTAL AREA

**4575 ft<sup>2</sup>**  
**425 m<sup>2</sup>**

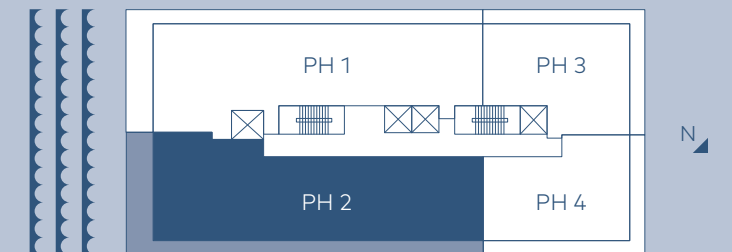
RESIDENCE  
**PH 2**



Stated square footages and dimensions are measured to the exterior boundaries of the exterior walls and the centerline of interior demising walls and in fact vary from the square footage and dimensions that would be determined by using the description and definition of the "Unit" set forth in the Declaration (which generally only includes the interior airspace between the perimeter walls and excludes all interior structural components and other common elements). This method is generally used in sales materials and is provided to allow a prospective buyer to compare the Units with units in other condominium projects that utilize the same method. Measurements of rooms set forth on this floor plan are generally taken at the farthest points of each given room (as if the room were a perfect rectangle), without regard for any cutouts or variations. Accordingly, the area of the actual room will typically be smaller than the product obtained by multiplying the stated length and width. All dimensions are estimates which will vary with actual construction, and all floor plans, specifications and other development plans are subject to change and will not necessarily accurately reflect the final plans and specifications for the development. 



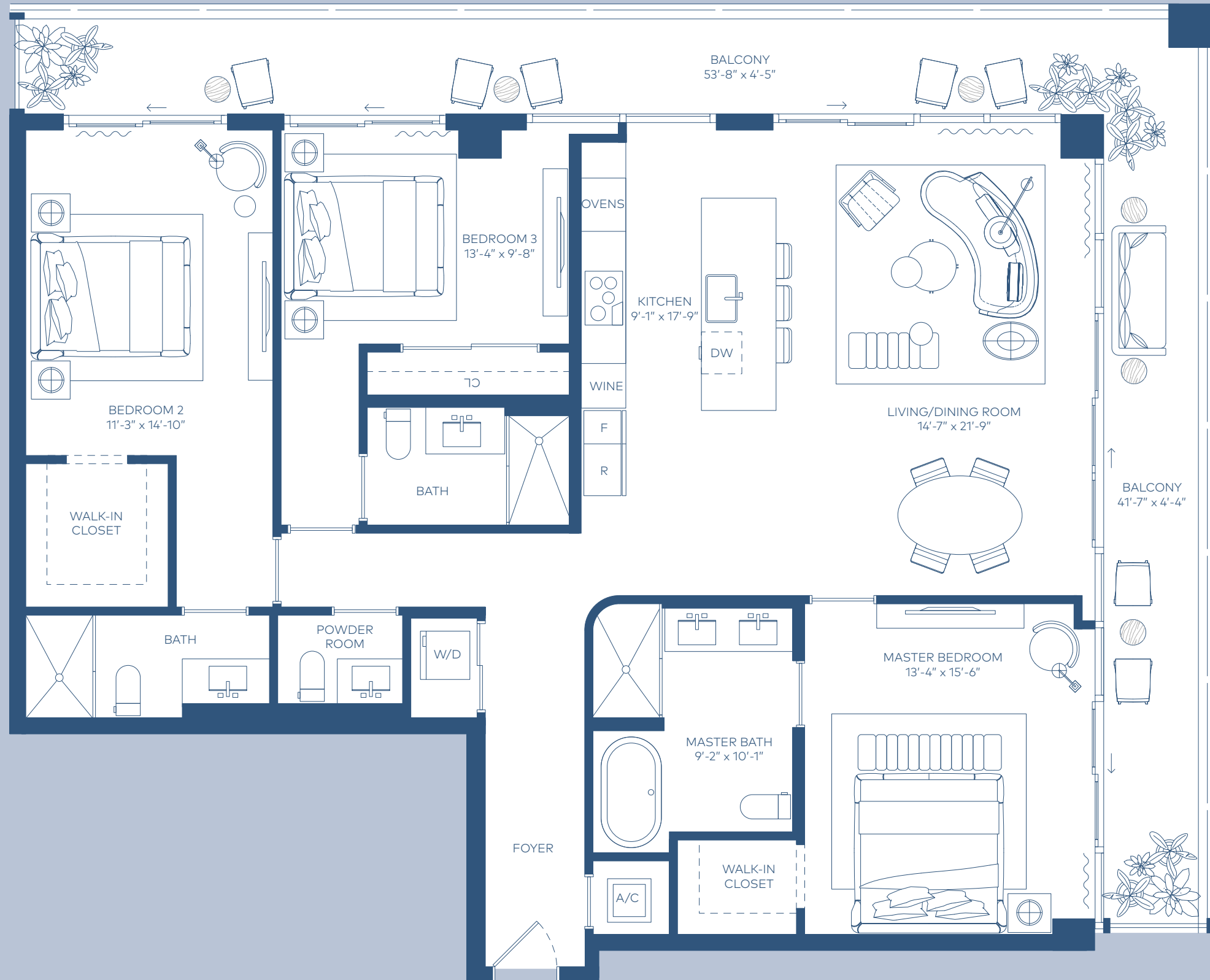
Bay







# RESIDENCE PH 3



### HIGHLIGHTS

**3 Bedrooms**  
**3 Bathrooms**  
**Powder Room**

### INDOOR AREA

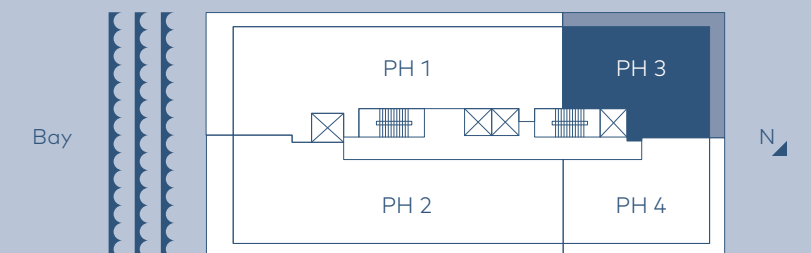
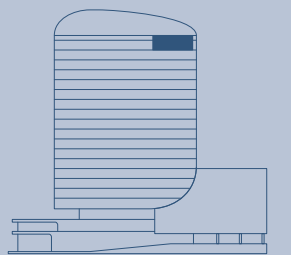
**1746 ft<sup>2</sup>**  
**162 m<sup>2</sup>**

### OUTDOOR LIVING

**475 ft<sup>2</sup>**  
**44 m<sup>2</sup>**

### TOTAL AREA

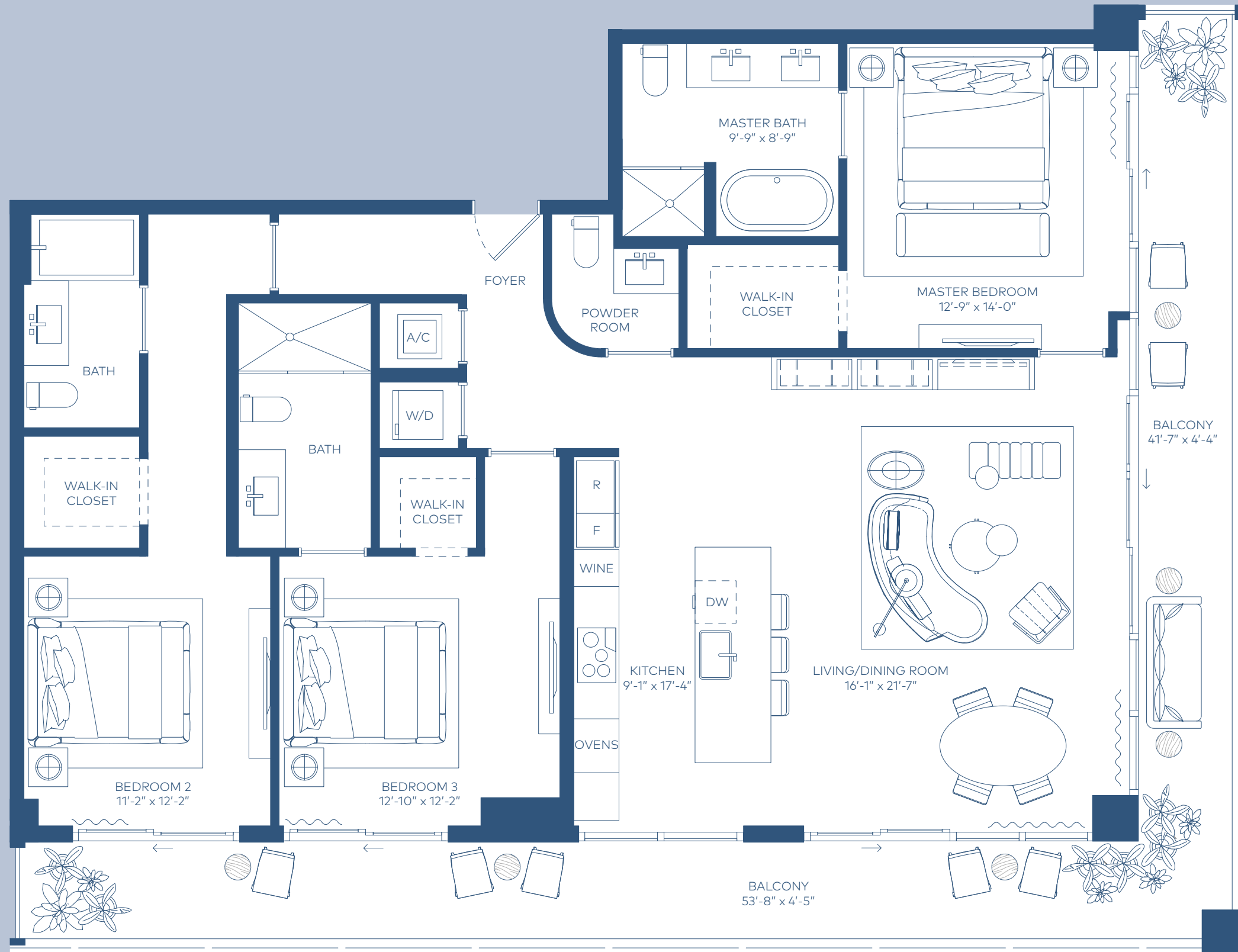
**2221 ft<sup>2</sup>**  
**206 m<sup>2</sup>**



Stated square footages and dimensions are measured to the exterior boundaries of the exterior walls and the centerline of interior demising walls and in fact vary from the square footage and dimensions that would be determined by using the description and definition of the "Unit" set forth in the Declaration (which generally only includes the interior airspace between the perimeter walls and excludes all interior structural components and other common elements). This method is generally used in sales materials and is provided to allow a prospective buyer to compare the Units with units in other condominium projects that utilize the same method. Measurements of rooms set forth on this floor plan are generally taken at the farthest points of each given room (as if the room were a perfect rectangle), without regard for any cutouts or variations. Accordingly, the area of the actual room will typically be smaller than the product obtained by multiplying the stated length and width. All dimensions are estimates which will vary with actual construction, and all floor plans, specifications and other development plans are subject to change and will not necessarily accurately reflect the final plans and specifications for the development.



# RESIDENCE PH 4



**HIGHLIGHTS**

**3 Bedrooms**  
**3 Bathrooms**  
**Powder Room**

**INDOOR AREA**

**1662 ft<sup>2</sup>**  
**154 m<sup>2</sup>**

**OUTDOOR LIVING**

**470 ft<sup>2</sup>**  
**44 m<sup>2</sup>**

**TOTAL AREA**

**2132 ft<sup>2</sup>**  
**198 m<sup>2</sup>**

Stated square footages and dimensions are measured to the exterior boundaries of the exterior walls and the centerline of interior demising walls and in fact vary from the square footage and dimensions that would be determined by using the description and definition of the "Unit" set forth in the Declaration (which generally only includes the interior airspace between the perimeter walls and excludes all interior structural components and other common elements). This method is generally used in sales materials and is provided to allow a prospective buyer to compare the Units with units in other condominium projects that utilize the same method. Measurements of rooms set forth on this floor plan are generally taken at the farthest points of each given room (as if the room were a perfect rectangle), without regard for any cutouts or variations. Accordingly, the area of the actual room will typically be smaller than the product obtained by multiplying the stated length and width. All dimensions are estimates which will vary with actual construction, and all floor plans, specifications and other development plans are subject to change and will not necessarily accurately reflect the final plans and specifications for the development. ■

