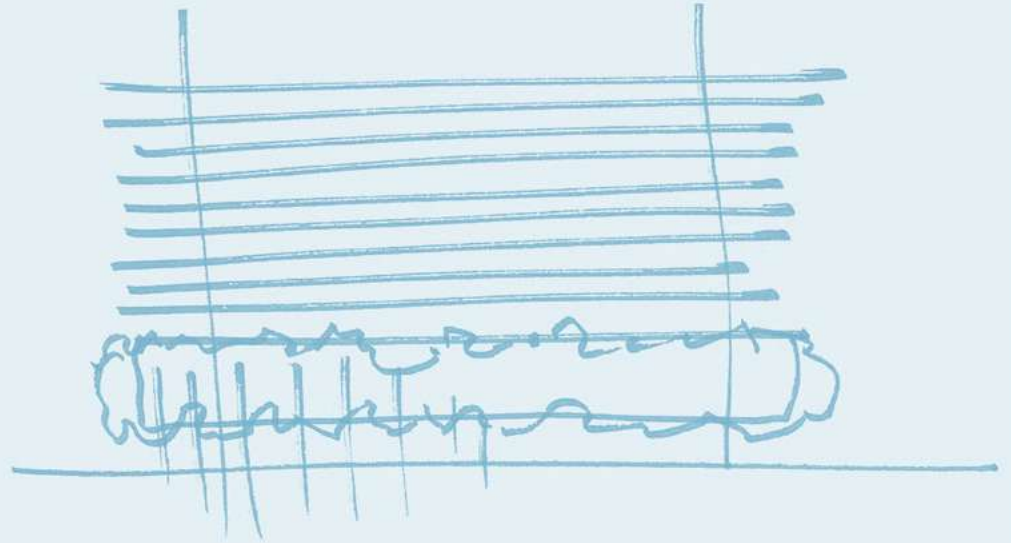


P = N T H O U S E

Eighty Seven Park
by Renzo Piano Building Workshop

The Vision

An idea floated; a thought made real. A place bound by land and sea, but rising free of both. Located on the edge of parkland and Atlantic Ocean, Eighty Seven Park creates a fresh dialogue with the vibrant community of Miami Beach. Seventy elegant homes that speak of light and air, designed by an architect with a poetic touch. It's an elemental approach, bringing together architecture, design and the natural landscape. It's a collaborative approach too; developed with Renzo Piano, a Pritzker Prize-winning architect who lives and breathes his art, there's a serenity to be found in the tension between sky and earth. A serenity that Eighty Seven Park captures so eloquently.



Where park meets the ocean

Eighty Seven Park is a selection of private, oceanfront homes designed to seamlessly embrace both park and ocean. Located in Miami Beach's newest neighborhood, it is the first residential project by Pritzker Prize-winning architect Renzo Piano in the USA.

Embrace the Air



Artist's conceptual rendering. See disclaimers page.

Views

What we're expressing is
that this building belongs
to nature.

—Renzo Piano

Views



Interior & Exterior Dining Areas



Artist's conceptual rendering. See disclaimers page.

Outdoor Living Area



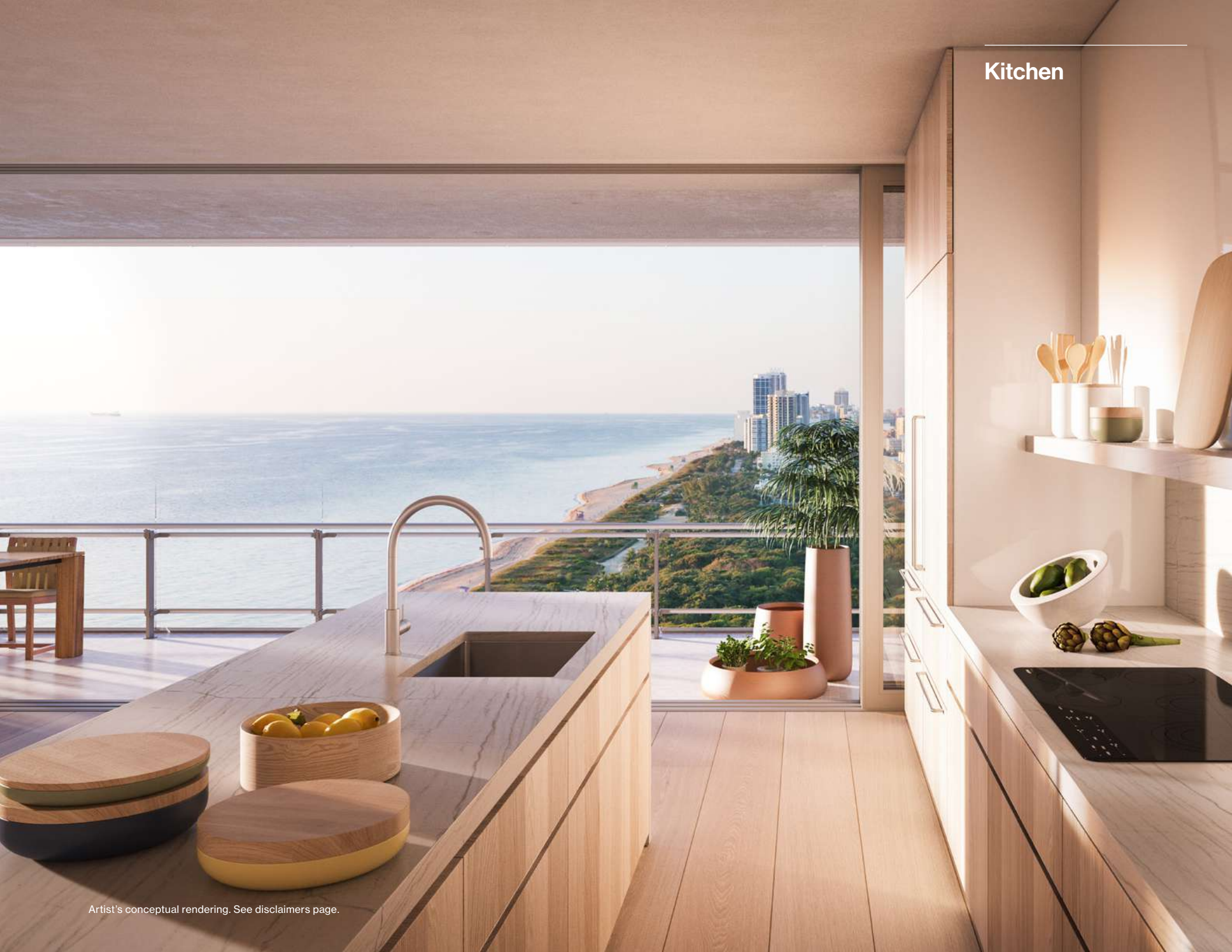
Artist's conceptual rendering. See disclaimers page.

Outdoor Living Area



Artist's conceptual rendering. See disclaimers page.

Kitchen



Artist's conceptual rendering. See disclaimers page.

Living Area



Master Bedroom



Artist's conceptual rendering. See disclaimers page.

Master Bathroom



Artist's conceptual rendering. See disclaimers page.

Specifications

LOWER LEVEL

4 Bedrooms, 5 Bathrooms,
2 Powder Rooms

Indoor Living: 7,572 ft² / 703 m²

Outdoor Living: 4,558 ft² / 424 m²

Total Area: 12,130 ft² / 1127 m²

Balcony Linear Feet: 342'-6"

UPPER LEVEL

Indoor Area: 342 ft² / 32 m²

Outdoor Living: 5,362 ft² / 498 m²

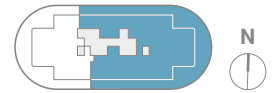
Swimming Pool: 643 ft² / 60 m²

Total Area: 5,704 ft² / 530 m²

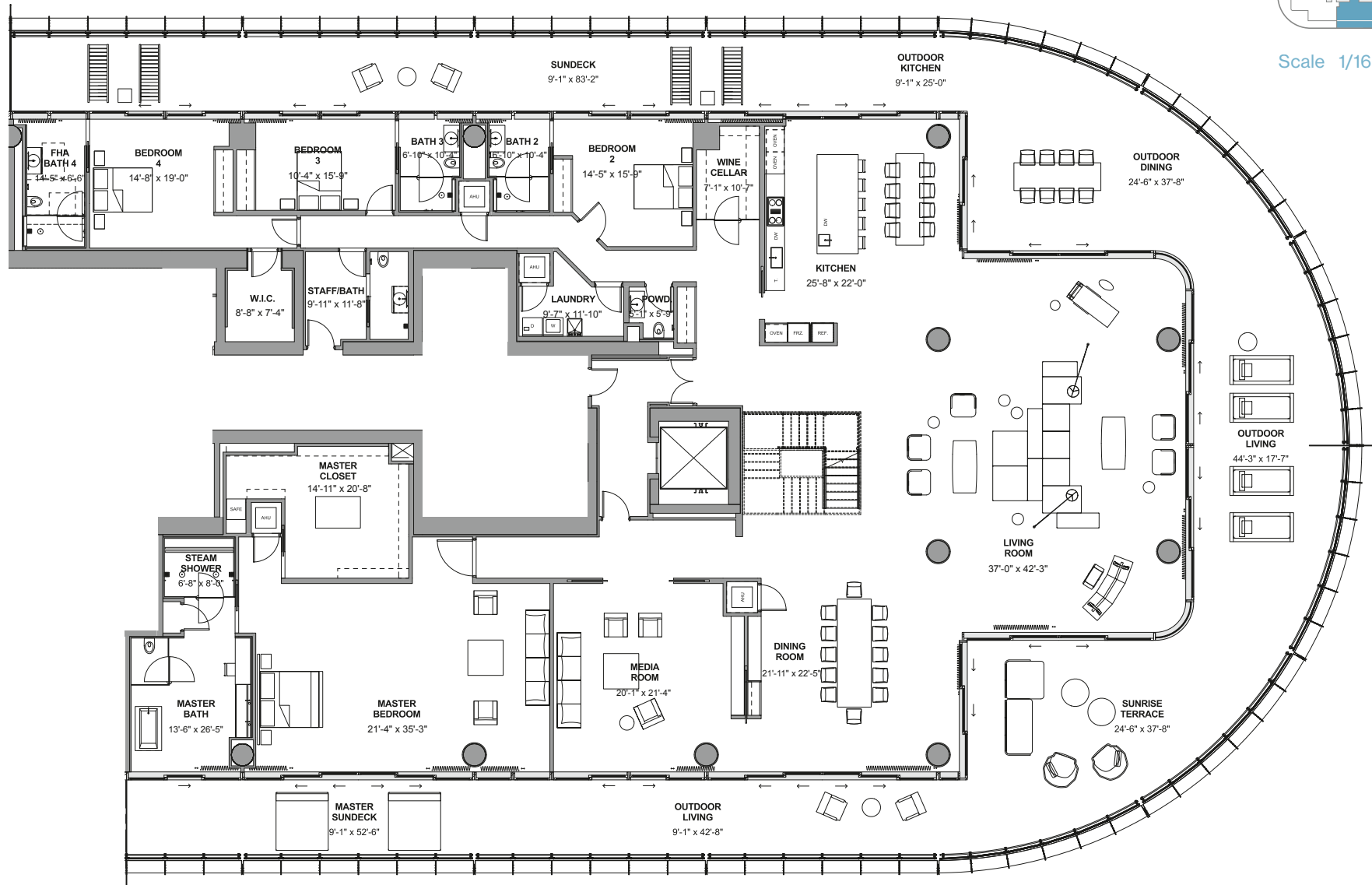
Balcony Linear Feet: 216'-3"



Lower Level



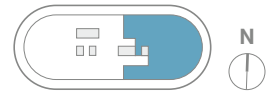
Scale 1/16" = 1'0"



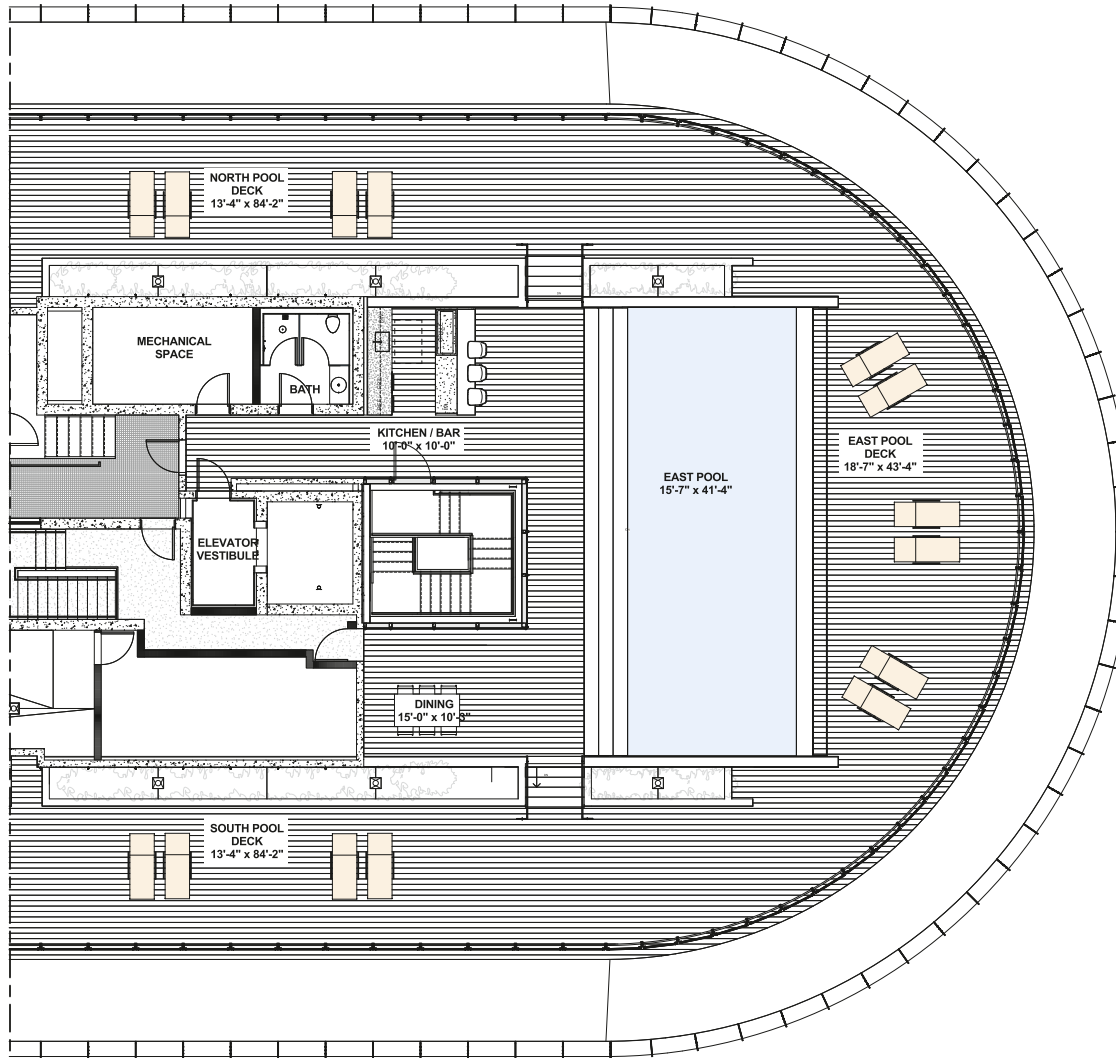
Stated square footages and dimensions are measured to the exterior boundaries of the exterior walls and the centerline of interior demising walls and in fact vary from the square footage and dimensions that would be determined by using the description and definition of the "Unit" set forth in the Declaration (which generally only includes the interior airspace between the perimeter walls and excludes all interior structural components and other common elements). This method is generally used in sales materials and is provided to allow a prospective buyer to compare the Units with units in other condominium projects that utilize the same method. Measurements of rooms set forth on this floor plan are generally taken at the farthest points of each given room (as if the room were a perfect rectangle), without regard for any cutouts or variations. Accordingly, the area of the actual room will typically be smaller than the product obtained by multiplying the stated length and width. All dimensions are estimates which will vary with actual construction, and all floor plans, specifications and other development plans are subject to change and will not necessarily accurately reflect the final plans and specifications for the development. Artist's conceptual rendering. See disclaimers page.

See disclaimers page.

Upper Level



Scale 1/16" = 1'0"



Stated square footages and dimensions are measured to the exterior boundaries of the exterior walls and the centerline of interior demising walls and in fact vary from the square footage and dimensions that would be determined by using the description and definition of the "Unit" set forth in the Declaration (which generally only includes the interior airspace between the perimeter walls and excludes all interior structural components and other common elements). This method is generally used in sales materials and is provided to allow a prospective buyer to compare the Units with units in other condominium projects that utilize the same method. Measurements of rooms set forth on this floor plan are generally taken at the farthest points of each given room (as if the room were a perfect rectangle), without regard for any cutouts or variations. Accordingly, the area of the actual room will typically be smaller than the product obtained by multiplying the stated length and width. All dimensions are estimates which will vary with actual construction, and all floor plans, specifications and other development plans are subject to change and will not necessarily accurately reflect the final plans and specifications for the development. Artist's conceptual rendering. See disclaimers page.

See disclaimers page.

Private Amenities

Private Rooftop Pool :643 ft²/60 m²

Outdoor Living: 9920 ft²/922 m²

Wraparound Rooftop Sundeck: 216 linear feet

Poolside Wet Bar

Private Elevator

Private Wine Cellar

Outdoor Kitchen

Staff Quarters

3 Reserved Parking Spaces



Credits

Contacts

Development
8701 Collins
Development, LLC
– Terra
– Bizzi & Partners
Development

Architectural Design
Renzo Piano
Building Workshop

Interior Design
RDAI

Landscape Architect
West 8

Lighting Design
Lux Populi

Exclusive Sales
Douglas Elliman
Development Marketing

Eighty Seven Park
Sales Gallery
8701 Collins Avenue
Miami Beach, FL 33154

Phone 305 834 4999
info@eightysevenpark.com
eightysevenpark.com

This project is being developed by 8701 Collins Development, LLC, a Delaware limited liability company ("Developer"), which has a limited right to use the trademarked names and logos of Terra and Bizzi & Partners Development. Any and all statements, disclosures and/or representations shall be deemed made by Developer and not by Terra and Bizzi & Partners Development and you agree to look solely to Developer (and not to Terra and Bizzi & Partners Development and/or each of their affiliates) with respect to any and all matters relating to the sales and marketing and/or development of the project.

ORAL REPRESENTATIONS CANNOT BE RELIED UPON AS CORRECTLY STATING THE REPRESENTATIONS OF THE DEVELOPER. FOR CORRECT REPRESENTATIONS, MAKE REFERENCE TO THIS BROCHURE AND TO THE DOCUMENTS REQUIRED BY SECTION 718.503, FLORIDA STATUTES, TO BE FURNISHED BY A DEVELOPER TO A BUYER OR LESSEE. These materials are not intended to be an offer to sell, or solicitation to buy a unit in the condominium. Such an offering shall only be made pursuant to the prospectus (offering circular) for the condominium and no statements should be relied upon unless made in the prospectus or in the applicable purchase agreement. In no event shall any solicitation, offer or sale of a unit in the condominium be made in, or to residents of, any state or country in which such activity would be unlawful.

All images and designs depicted herein are artist's conceptual renderings, which are based upon preliminary development plans, and are subject to change without notice in the manner provided in the offering documents. All such materials are not to scale and are shown solely for illustrative purposes. Renderings depict proposed views, which are not identical from each unit. No guarantees or representations whatsoever are made that existing or future views of the project and surrounding areas depicted by artist's conceptual renderings or otherwise described herein, will be provided or, if provided, will be as depicted or described herein. Any view from a unit or from other portions of the property may in the future be limited or eliminated by future development or forces of nature and the developer in no manner guarantees the continuing existence of any view.

Certain items such as the following, which may be seen in model apartments (if any), brochures and/or in illustrations, are not included with the sale of the unit: wall coverings

(including paint other than base primer), accent light fixtures, wall ornaments, drapes, blinds, furniture, knickknacks and other decorator accessories, lamps, mirrors, graphics, pictures, plants, wall-hung shelves, wet bars, intercoms, sound systems, kitchen accessories, linens, window shades, security systems, certain built-in fixtures, cabinetry, carpets or other floor coverings and colors, wood trim, other upgraded items, balcony treatments (e.g., tile, stone, marble, brick, chatahoochee, scored concrete or wood trim), barbecues, planters, window screens, landscaping and any other items of this nature which may be added or deleted by Developer from time to time. This list of items (which is not all-inclusive) is provided as an illustration of the type of items built-in or placed in model apartments (if any) or shown in illustrations strictly for the purpose of decoration and example only. There is no obligation for Developer to provide models, but if so provided, the foregoing disclaimers will apply. Certain items, if included with the unit, such as tile, marble, stone, granite, cabinets, wood, stain, grout, wall and ceiling textures, mica and carpeting, are subject to size and color variations, grain and quality variations, and may vary in accordance with price, availability and changes by manufacturer from those shown in the models or in illustrations or in the published list of standard items (if any). If circumstances arise which, in Developer's opinion, warrant changes of suppliers, manufacturers, brand names, models or items, or if Developer elects to omit certain items, Developer may modify the list of standard features or make substitutions for equipment, material, appliances, brands, models, etc., with items which in Developer's opinion are of equal or better quality (regardless of cost). All depictions of furniture, appliances, counters, soffits, floor coverings and other matters of detail, including, without limitation, items of finish and decoration, are conceptual only and are not necessarily included in each Unit. Furnishings are only included if and to the extent provided in your purchase agreement.

Because wood is a natural product, every piece has a unique color and appearance, and every installed floor will have its own distinctive visual character. Photographs, samples and website images can offer an impression of the product, but they may not be representative of the full range of color, knots, texture and grain variations which can exist in the product itself as installed. Wood is subject to weathering and fading and as such the coloration may vary over time. Additionally, all wood flooring will acclimate to the temperature and humidity

in the Unit and seasonal movement in a wood floor is to be expected, as wood is a product of nature and will expand and contract with changes in humidity and temperature. Gaps often appear between boards during colder periods and tighten in warmer temperatures. Minimizing heat and humidity fluctuations is required to preserve the condition of the wood. Even under ideal conditions, wood is subject to warping, bowing and cupping.

All plans, features and amenities depicted herein are based upon preliminary development plans, and are subject to change without notice in the manner provided in the offering documents. No guarantees or representations whatsoever are made that any plans, features, amenities or facilities will be provided or, if provided, will be of the same type, size, location or nature as depicted or described herein.

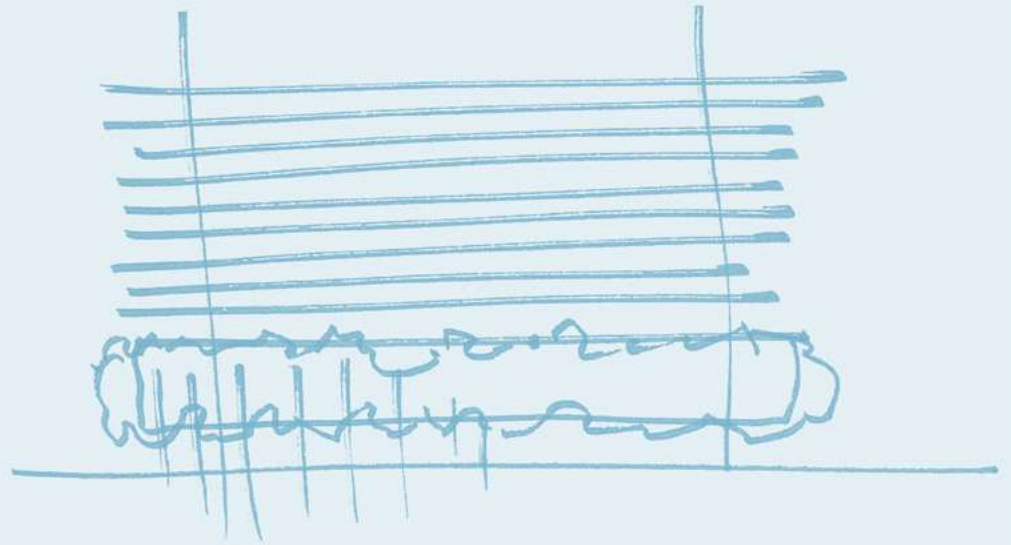
The project graphics, renderings and text provided herein are copyrighted works owned by the Developer. All rights reserved. Unauthorized reproduction, display or other dissemination of such materials is strictly prohibited and constitutes copyright infringement. No real estate broker is authorized to make any representations or other statements regarding the projects, and no agreements with, deposits paid to or other arrangements made with any real estate broker are or shall be binding on the developer.

PENTHOUSE II

Eighty Seven Park
by Renzo Piano Building Workshop

The Vision

An idea floated; a thought made real. A place bound by land and sea, but rising free of both. Located on the edge of parkland and Atlantic Ocean, Eighty Seven Park creates a fresh dialogue with the vibrant community of Miami Beach. Seventy elegant homes that speak of light and air, designed by an architect with a poetic touch. It's an elemental approach, bringing together architecture, design and the natural landscape. It's a collaborative approach too; developed with Renzo Piano, a Pritzker Prize-winning architect who lives and breathes his art, there's a serenity to be found in the tension between sky and earth. A serenity that Eighty Seven Park captures so eloquently.



Where park meets the ocean

Eighty Seven Park is a selection of private, oceanfront homes designed to seamlessly embrace both park and ocean. Located in Miami Beach's newest neighborhood, it is the first residential project by Pritzker Prize-winning architect Renzo Piano in the USA.

Views

What we're expressing is
that this building belongs
to nature.

—Renzo Piano

Views



See disclaimer's page.

Interior & Exterior Dining Areas



Outdoor Living Area



Living Area



Master Bedroom



Specifications

LOWER LEVEL

3 Bedrooms, 3 Bathrooms,
1 Powder Room

Indoor Living: 4,196 ft² / 390 m²

Outdoor Living: 2,867 ft² / 266 m²

Total Area: 7,063 ft² / 656m²

Balcony Linear Feet: 212'-3"

UPPER LEVEL

Indoor Area: 300 ft² / 28 m²

Outdoor Living: 5,460 ft² / 507 m²

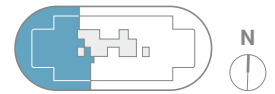
Swimming Pool: 643 ft² / 60 m²

Total Area: 5,760 ft² / 535 m²

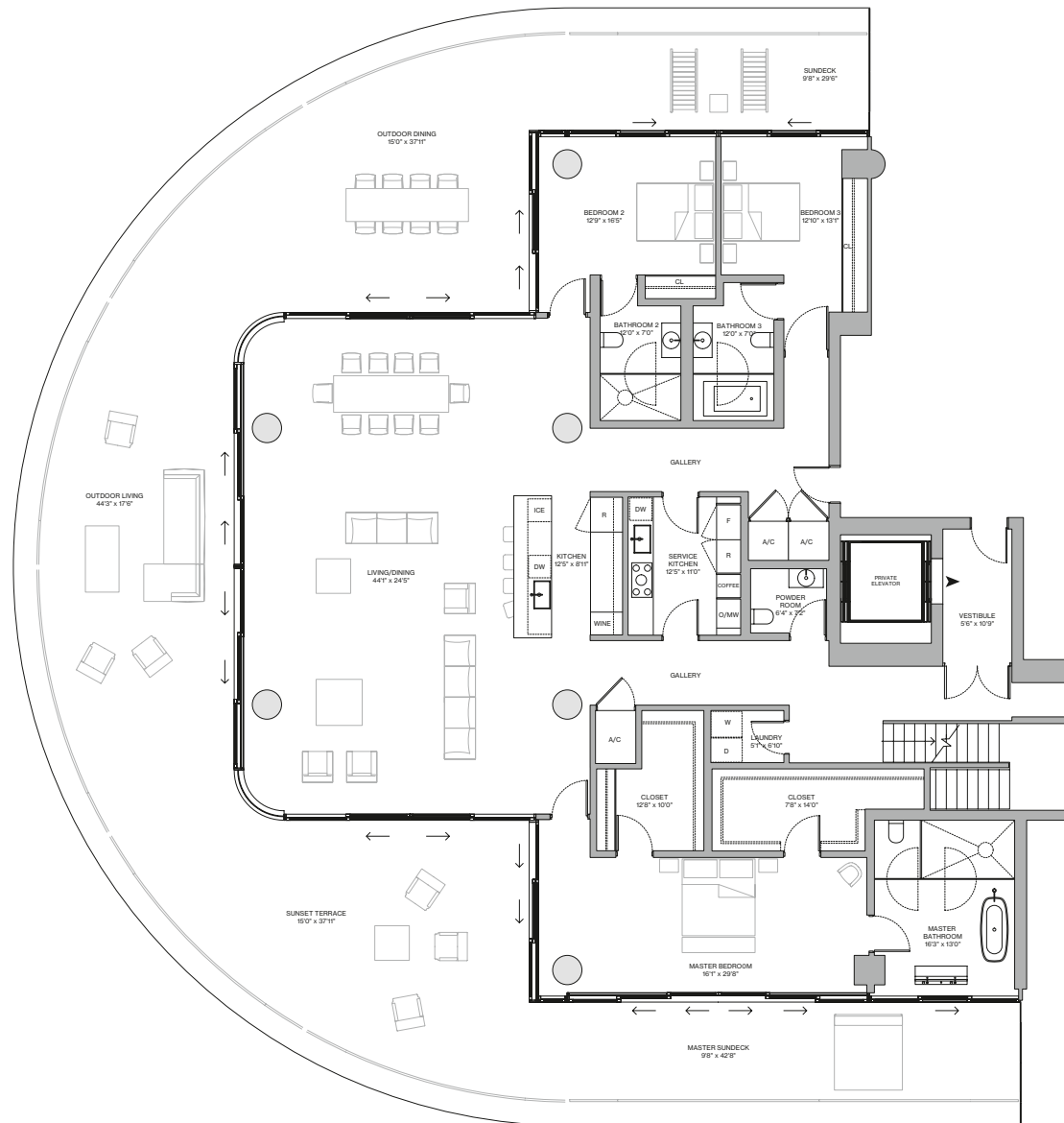
Balcony Linear Feet: 216'-3"



Lower Level



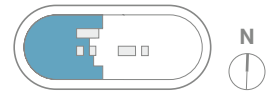
Scale 1/16" = 1'0"



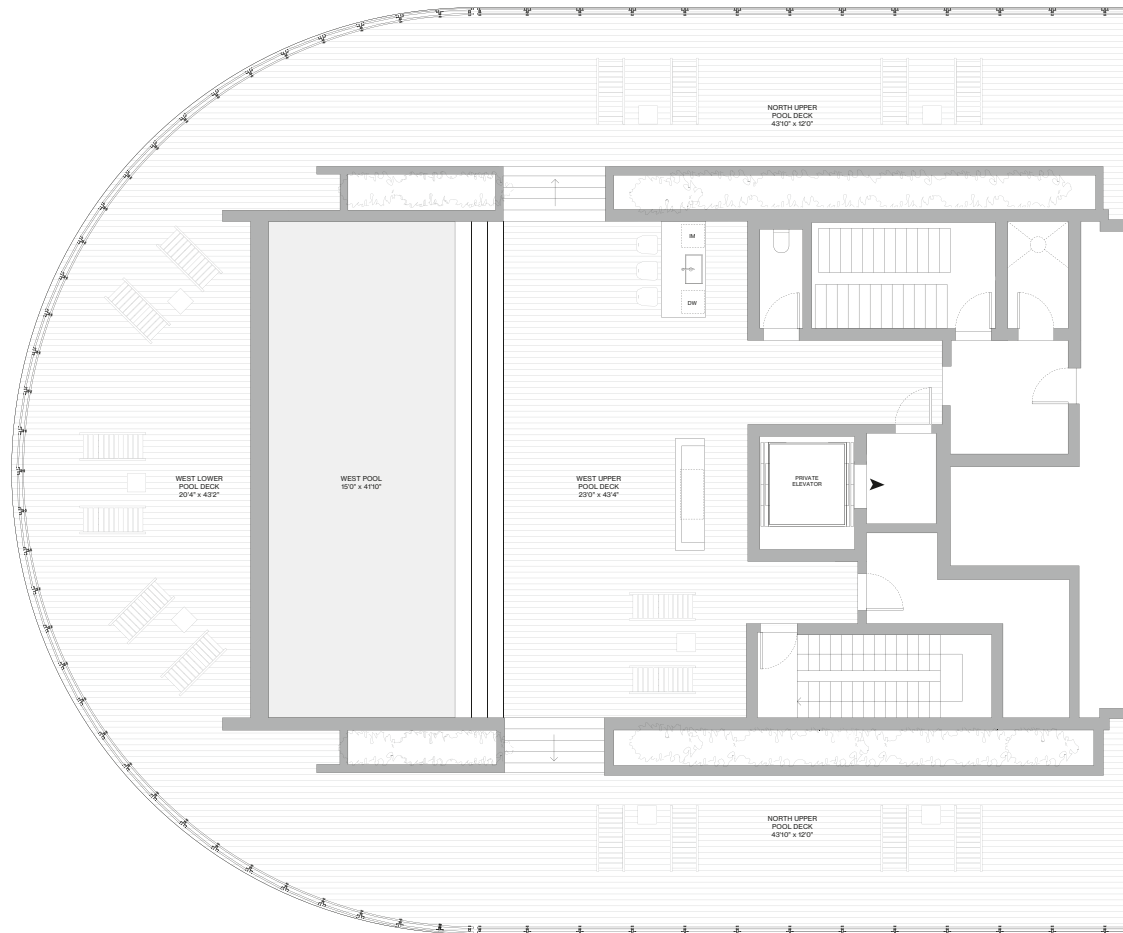
Stated square footages and dimensions are measured to the exterior boundaries of the exterior walls and the centerline of interior demising walls and in fact vary from the square footage and dimensions that would be determined by using the description and definition of the "Unit" set forth in the Declaration (which generally only includes the interior airspace between the perimeter walls and excludes all interior structural components and other common elements). This method is generally used in sales materials and is provided to allow a prospective buyer to compare the Units with units in other condominium projects that utilize the same method. Measurements of rooms set forth on this floor plan are generally taken at the farthest points of each given room (as if the room were a perfect rectangle), without regard for any cutouts or variations. Accordingly, the area of the actual room will typically be smaller than the product obtained by multiplying the stated length and width. All dimensions are estimates which will vary with actual construction, and all floor plans, specifications and other development plans are subject to change and will not necessarily accurately reflect the final plans and specifications for the development. Artist's conceptual rendering. See disclaimers page.

See disclaimers page.

Upper Level



Scale 1/16" = 1'0"



Stated square footages and dimensions are measured to the exterior boundaries of the exterior walls and the centerline of interior demising walls and in fact vary from the square footage and dimensions that would be determined by using the description and definition of the "Unit" set forth in the Declaration (which generally only includes the interior airspace between the perimeter walls and excludes all interior structural components and other common elements). This method is generally used in sales materials and is provided to allow a prospective buyer to compare the Units with units in other condominium projects that utilize the same method. Measurements of rooms set forth on this floor plan are generally taken at the farthest points of each given room (as if the room were a perfect rectangle), without regard for any cutouts or variations. Accordingly, the area of the actual room will typically be smaller than the product obtained by multiplying the stated length and width. All dimensions are estimates which will vary with actual construction, and all floor plans, specifications and other development plans are subject to change and will not necessarily accurately reflect the final plans and specifications for the development. Artist's conceptual rendering. See disclaimers page.

[See disclaimers page.](#)

Private Amenities

Private Rooftop Pool :627.5 ft²/58 m²

Outdoor Living: 8,327 ft²/774 m²

Wraparound Rooftop Sundeck: 216 linear feet

Poolside Wet Bar

Private Elevator

Outdoor Kitchen

3 Reserved Parking Spaces



Credits

Contacts

Development
8701 Collins
Development, LLC
– Terra
– Bizzi & Partners
Development

Architectural Design
Renzo Piano
Building Workshop

Interior Design
RDAI

Landscape Architect
West 8

Lighting Design
Lux Populi

Exclusive Sales
Douglas Elliman
Development Marketing

Eighty Seven Park
Sales Gallery
8701 Collins Avenue
Miami Beach, FL 33154

Phone 305 834 4999
info@eightysevenpark.com
eightysevenpark.com

This project is being developed by 8701 Collins Development, LLC, a Delaware limited liability company ("Developer"), which has a limited right to use the trademarked names and logos of Terra and Bizzi & Partners Development. Any and all statements, disclosures and/or representations shall be deemed made by Developer and not by Terra and Bizzi & Partners Development and you agree to look solely to Developer (and not to Terra and Bizzi & Partners Development and/or each of their affiliates) with respect to any and all matters relating to the sales and marketing and/or development of the project.

ORAL REPRESENTATIONS CANNOT BE RELIED UPON AS CORRECTLY STATING THE REPRESENTATIONS OF THE DEVELOPER. FOR CORRECT REPRESENTATIONS, MAKE REFERENCE TO THIS BROCHURE AND TO THE DOCUMENTS REQUIRED BY SECTION 718.503, FLORIDA STATUTES, TO BE FURNISHED BY A DEVELOPER TO A BUYER OR LESSEE. These materials are not intended to be an offer to sell, or solicitation to buy a unit in the condominium. Such an offering shall only be made pursuant to the prospectus (offering circular) for the condominium and no statements should be relied upon unless made in the prospectus or in the applicable purchase agreement. In no event shall any solicitation, offer or sale of a unit in the condominium be made in, or to residents of, any state or country in which such activity would be unlawful.

All images and designs depicted herein are artist's conceptual renderings, which are based upon preliminary development plans, and are subject to change without notice in the manner provided in the offering documents. All such materials are not to scale and are shown solely for illustrative purposes. Renderings depict proposed views, which are not identical from each unit. No guarantees or representations whatsoever are made that existing or future views of the project and surrounding areas depicted by artist's conceptual renderings or otherwise described herein, will be provided or, if provided, will be as depicted or described herein. Any view from a unit or from other portions of the property may in the future be limited or eliminated by future development or forces of nature and the developer in no manner guarantees the continuing existence of any view.

Certain items such as the following, which may be seen in model apartments (if any), brochures and/or in illustrations, are not included with the sale of the unit: wall coverings

(including paint other than base primer), accent light fixtures, wall ornaments, drapes, blinds, furniture, knickknacks and other decorator accessories, lamps, mirrors, graphics, pictures, plants, wall-hung shelves, wet bars, intercoms, sound systems, kitchen accessories, linens, window shades, security systems, certain built-in fixtures, cabinetry, carpets or other floor coverings and colors, wood trim, other upgraded items, balcony treatments (e.g., tile, stone, marble, brick, chatahoochee, scored concrete or wood trim), barbecues, planters, window screens, landscaping and any other items of this nature which may be added or deleted by Developer from time to time. This list of items (which is not all-inclusive) is provided as an illustration of the type of items built-in or placed in model apartments (if any) or shown in illustrations strictly for the purpose of decoration and example only. There is no obligation for Developer to provide models, but if so provided, the foregoing disclaimers will apply. Certain items, if included with the unit, such as tile, marble, stone, granite, cabinets, wood, stain, grout, wall and ceiling textures, mica and carpeting, are subject to size and color variations, grain and quality variations, and may vary in accordance with price, availability and changes by manufacturer from those shown in the models or in illustrations or in the published list of standard items (if any). If circumstances arise which, in Developer's opinion, warrant changes of suppliers, manufacturers, brand names, models or items, or if Developer elects to omit certain items, Developer may modify the list of standard features or make substitutions for equipment, material, appliances, brands, models, etc., with items which in Developer's opinion are of equal or better quality (regardless of cost). All depictions of furniture, appliances, counters, soffits, floor coverings and other matters of detail, including, without limitation, items of finish and decoration, are conceptual only and are not necessarily included in each Unit. Furnishings are only included if and to the extent provided in your purchase agreement.

Because wood is a natural product, every piece has a unique color and appearance, and every installed floor will have its own distinctive visual character. Photographs, samples and website images can offer an impression of the product, but they may not be representative of the full range of color, knots, texture and grain variations which can exist in the product itself as installed. Wood is subject to weathering and fading and as such the coloration may vary over time. Additionally, all wood flooring will acclimate to the temperature and humidity

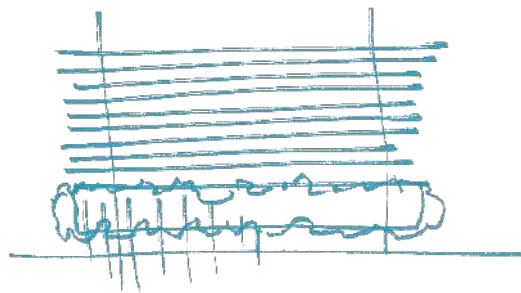
in the Unit and seasonal movement in a wood floor is to be expected, as wood is a product of nature and will expand and contract with changes in humidity and temperature. Gaps often appear between boards during colder periods and tighten in warmer temperatures. Minimizing heat and humidity fluctuations is required to preserve the condition of the wood. Even under ideal conditions, wood is subject to warping, bowing and cupping.

All plans, features and amenities depicted herein are based upon preliminary development plans, and are subject to change without notice in the manner provided in the offering documents. No guarantees or representations whatsoever are made that any plans, features, amenities or facilities will be provided or, if provided, will be of the same type, size, location or nature as depicted or described herein.

The project graphics, renderings and text provided herein are copyrighted works owned by the Developer. All rights reserved. Unauthorized reproduction, display or other dissemination of such materials is strictly prohibited and constitutes copyright infringement. No real estate broker is authorized to make any representations or other statements regarding the projects, and no agreements with, deposits paid to or other arrangements made with any real estate broker are or shall be binding on the developer.

P = N T H O U S E

Eighty Seven Park
by Renzo Piano Building Workshop



A gentle touch of simplicity
A reflection of nature
A painting with light
A theory of luxury living
A contemplation of quiet beauty



Meticulously crafted by RDAI, Eighty Seven Park’s penthouse is inspired by Miami Beach’s sensuous tranquility—the vast expanse of blue ocean, the shimmering white sandy beach, and the urban skyline to the west.

The poetry of luxury living is layered with a sumptuous counterpoint of colors, impeccable craftsmanship, sophisticated design objects, tastefully curated artworks, and sculptural lighting fixtures. At the top of Renzo Piano’s masterpiece, the purity of hues, the tactile sense of natural materials, and the elegant movement of forms through the spaces is gently infused with Miami Beach’s unmistakable light. The serene and peaceful atmosphere is a tempting invitation to relax and give way to the contentment that only Eighty Seven Park can offer.



The penthouse at Eighty Seven Park was designed to open out to its unique surroundings. Its unparalleled location allows panoramic views from every living space, with each vista as different as it is breathtaking.

The concept and the palette for the penthouse was created with the inspiration of the vast expanse of blue ocean, the shimmering white sandy beach. Allowing natural light to subtly infuse the interior, thus preserving a connection with the outdoors, was an integral part of the interior design.









The open, ocean-facing living rooms are punctuated by a set of claustra that filter and play with the light. These vertical elements veil the sculptural ribbon of gleaming wood and marble that forms an inviting stair to the private rooftop.







The family room salon offers views of the vibrant Miami skyline and sparkling Biscayne Bay, an exciting mixture of urban and natural environments. This is reflected through playful furniture and stronger colors, including tropical blue-greens inspired by the luxuriant vegetation of the nearby park and the ocean.





The space's grand volumes welcome and speak of comfort and calm.
Elegance flows from one area to another, gently revealing a sense of place.



The different salons distinguish themselves with unique expressions through their disposition and their materiality.



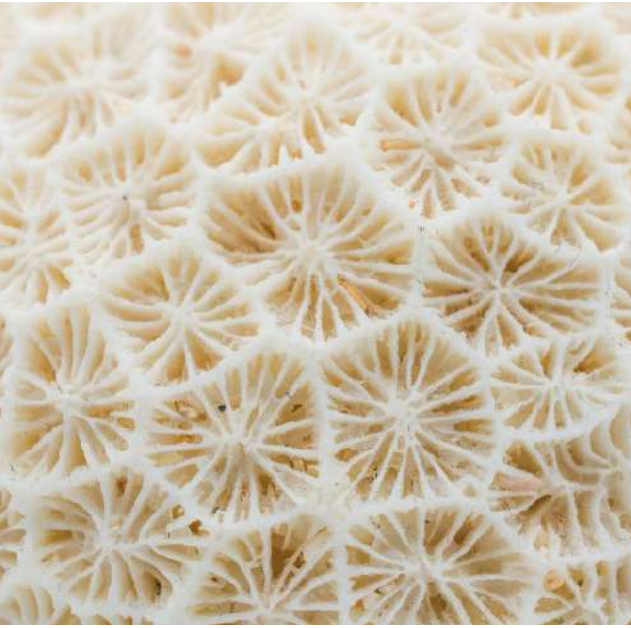
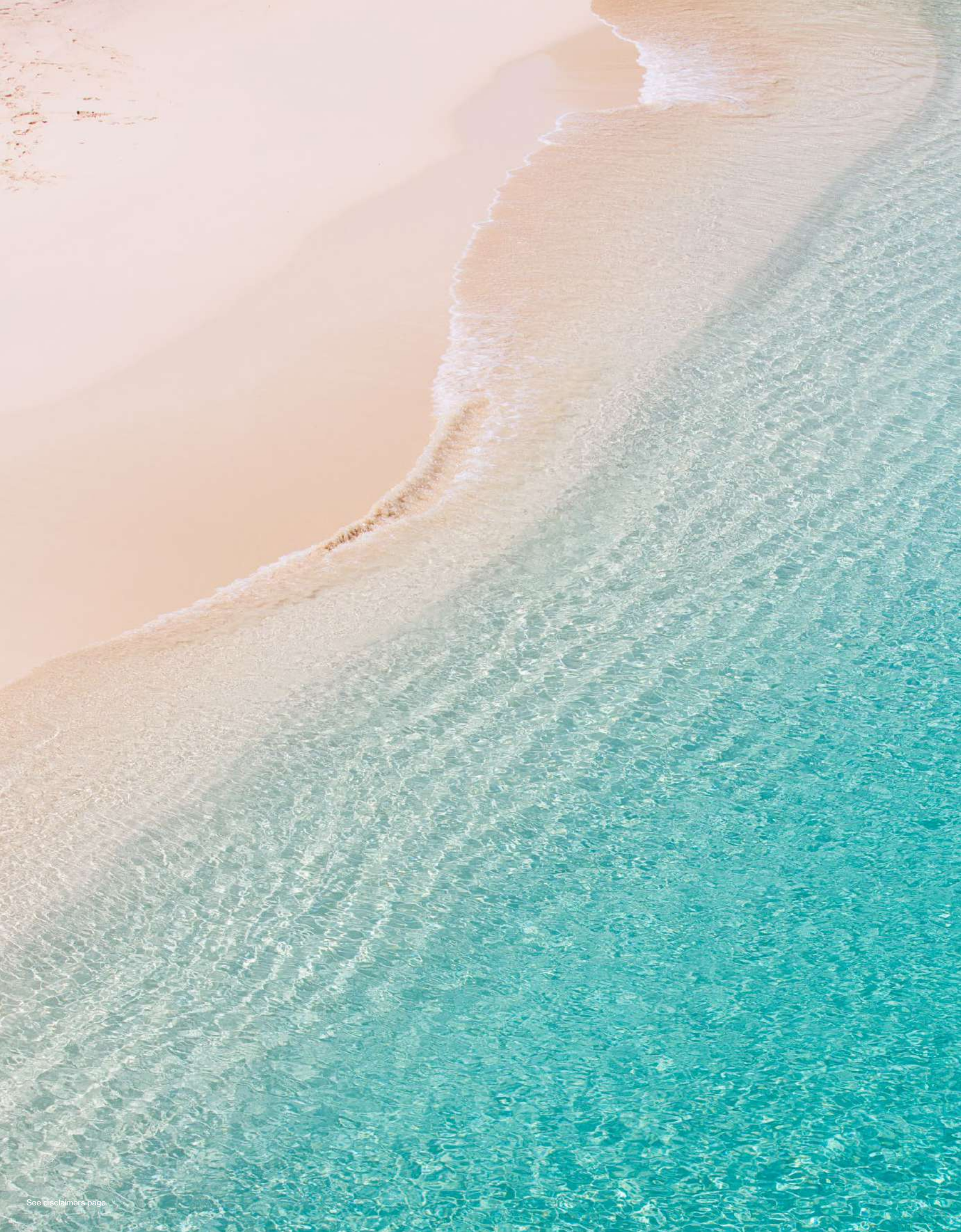
The poetry of the concept is evident in the counterpoint of color, the use of precious materials, the contrast of finely-detailed accessories against natural surfaces, the occasional appearance of highly sophisticated design pieces and, of course, the artwork and sculptural lighting.





The essence of luxury living arises from the interplay of colors, the textures of natural materials, impeccable craftsmanship, sophisticated furnishings, tastefully curated artworks, and lighting that transcends into art. RDAI's palette for the penthouse mixes natural materials, hand-crafted finishes, sophisticated forms, and a dash of color. Their intention—to provide a serenely relaxed atmosphere, at once peaceful and poetic—is accomplished with pure color and form.













Interiors by

RDAI

RDAI's philosophy is eminent in all the intrinsic design elements present throughout the interiors at Eighty Seven Park by Renzo Piano Building Workshop. The modern and classical aspects of their meticulously executed interior concepts and the firm's history, including their most notable projects for Hermes and frequent collaboration with Renzo Piano made RDAI the natural choice to complement RPBW's architecture. The prevailing concept of bringing the exterior colors and ocean flavor into the interior spaces is prevalent through the use of a tranquil and serene palette of materials and finishes that floods each space further blurring the line between the inside and outside.

RDAI's genius lies in their discerning eyes for materiality and forms in context, as well as their immaculate execution with full attention to every detail that, together, exalts the quiet and true luxury that comes so natural and effortless.



Left: Les Bains Restaurant, Paris
Below: Elie Saab



Top: La Parfumerie Hermès, New York
Right: Hermès Rive Gauche, Paris















DESIGN TEAM

Architecture

Renzo Piano
Building Workshop

RPBW is an international architectural practice with offices in Paris, Genoa and New York. The Workshop is led by 14 partners, including founder and Pritzker Prize laureate, Renzo Piano. Each project is a personal response to the specifics of its location, with a design solution that embraces architecture, artistry, engineering and technology. Since its formation in 1981, RPBW has completed over 120 projects across the globe, including: the Menil Collection in Houston, Texas; the Kanak Cultural Center in New Caledonia; the Beyeler Foundation in Basel; the Rome Auditorium; the Maison Hermès in Tokyo; the Shard in London; the Morgan Library; the New York Times Building; and the new Whitney Museum in New York. RPBW’s work has been recognized the world over, including major awards from the American Institute of Architects (AIA) and the Royal Institute of British Architects (RIBA).

Interior

RDAl

Since its foundation in 1972 by Rena Dumas, RDAI has transcended the boundaries of architecture, interior architecture and design. Today, Denis Montel leads an international team of 54 architects, interior designers and designers on projects inspired by the point where the modern world and classical culture meet. Significant projects include global stores for Hermès and Yves Saint Laurent, as well as hotels, working environments and exhibition spaces. They are frequent collaborators with the Renzo Piano Building Workshop, including on La Maison Hermès Tokyo.

Landscape

West 8

West 8 is an award-winning international office for urban design and landscape architecture; its team of more than 70 based in the Netherlands, Belgium and New York. Founded in 1987, it takes a multi-disciplinary approach, harmonizing the best of the natural and engineered worlds to create whole new environments. With major urban planning projects, waterfront reclamations, public parks and gardens, and residential developments, West 8’s experience covers the globe. The practice’s move into the US was sealed with a global competition win for the design of the 172-acre Governors Island Park in New York Harbor.

Lighting

Lux Populi

Architectural lighting designers Lux Populi illuminate the design process for architects in projects across the international boundaries. Working in a way which is coherent, effortless and resolute, they offer a full-service consultancy from initial concept to final commission and warranty inspection. With a background in theatrical and cultural events, the company has since worked on major projects such as: the Knowledge Enrichment Center in Qatar; the major David Bowie Is exhibition at the Museum of Contemporary Art, Chicago; and the Port Miami Tunnel Gate Structures, as well as an international section of hotels and private residences.



DEVELOPMENT PARTNERS

Terra

Terra is an integrated development firm in South Florida focused on creating sustainable, design-oriented communities that enhance neighborhoods and bring people together. Founded in 2001 by father and son Pedro and David Martin, the company has played a significant role in the prosperous transformation of the region. The firm’s portfolio includes luxury high-rises, single family homes, townhouses, retail shopping centers, office space and multifamily apartments, both in urban and suburban areas. Each development is a strategic investment in the region, with the impact on individual communities always carefully considered. Their passion for South Florida goes well beyond business, with directors and staff alike taking an active role in charitable, civic, arts, and cultural organizations. Their mission is to create better. To continue pushing beyond what has gone before. To build a company whose purpose is to help transform neighborhoods and the way we live through considered, intelligent and unexpected design.

Bizzi & Partners Development

Bizzi & Partners Development is a global real estate firm with offices in Milan, New York, San Paolo, and Tallinn. Founded by Davide Bizzi in 2000, the firm’s expansive portfolio of residential and commercial properties spans throughout Europe and the Americas with a focus on bringing market-leading, design-driven development into emerging and established locations. Bizzi’s senior management team brings over a century of combined multi-disciplinary experience to every facet of development, from design and architecture to finance and construction. The firm’s current projects include Milanosesto: a \$4.5 billion, 10 million square foot mixed-use project in Milan; a 70-story, 1,000 foot-tall tower at 125 Greenwich overlooking the World Trade Center Complex; and a collaboration with Renzo Piano on 565 Broome in New York’s SoHo neighborhood. Previous New York projects include the distinguished 400 5th Avenue and the recent office-to-condo conversion at 101 Leonard in TriBeCa.

New Valley

New Valley LLC is the real estate subsidiary of Vector Group Ltd (NYSE: VGR), and maintains equity positions in numerous real estate investments including a broad portfolio of domestic and international projects in the U.S., the Caribbean and Europe. New Valley targets opportunities in high barrier to entry markets, with irreplaceable locations that generate strong risk-adjusted returns. New Valley’s investment and development portfolio is comprised of apartments/condominiums, hotels, and land in Manhattan, Queens, Miami, Palm Springs, Maryland, Milan, Bermuda and St. Barthélemy. New Valley also owns 70% of Douglas Elliman, the largest residential real estate brokerage firm in the New York metropolitan area and fourth-largest in the United States.

Pacific Eagle

Pacific Eagle is a San Francisco-based real estate investor, developer and manager with more than 20 years experience in investing in and developing hotels, offices, and condominiums across the United States. The company was established in 1992 and is a wholly-owned subsidiary of Great Eagle Holdings Limited, a leading global real estate investment and development company. Great Eagle was founded in 1963 and is now listed on the Hong Kong Stock Exchange. Langham Hotels and Resorts is a fully owned subsidiary of Great Eagle Holdings Limited. Some of the company’s most notable luxury projects include The Langham Chicago, 555 Howard Street by Renzo Piano Building Workshop and The Austin San Francisco, as well as Cavalleri in Malibu.

This project is being developed by 8701 Collins Development, LLC, a Delaware limited liability company (“Developer”), which has a limited right to use the trademarked names and logos of Terra, Bizzi & Partners Development, New Valley Realty, and Pacific Eagle. Any and all statements, disclosures and/or representations shall be deemed made by Developer and not by any of the above entities, and you agree to look solely to Developer (and not to any of the above entities and/or any of their affiliates) with respect to any and all matters relating to the sales and marketing and/or development of the project.

ORAL REPRESENTATIONS CANNOT BE RELIED UPON AS CORRECTLY STATING THE REPRESENTATIONS OF THE DEVELOPER. FOR CORRECT REPRESENTATIONS, MAKE REFERENCE TO THIS BROCHURE AND TO THE DOCUMENTS REQUIRED BY SECTION 718.503, FLORIDA STATUTES, TO BE FURNISHED BY A DEVELOPER TO A BUYER OR LESSEE. These materials are not intended to be an offer to sell, or solicitation to buy a unit in the condominium. Such an offering shall only be made pursuant to the prospectus (offering circular) for the condominium and no statements should be relied upon unless made in the prospectus or in the applicable purchase agreement. In no event shall any solicitation, offer or sale of a unit in the condominium be made in, or to residents of, any state or country in which such activity would be unlawful.

All images and designs depicted herein are artist’s conceptual renderings, which are based upon preliminary development plans, and are subject to change without notice in the manner provided in the offering documents. All such materials are not to scale and are shown solely for illustrative purposes. Renderings depict proposed views, which are not identical from each unit. No guarantees or representations whatsoever are made that existing or future views of the project and surrounding areas depicted by artist’s conceptual renderings or otherwise described herein, will be provided or, if provided, will be as depicted or described herein. Any view from a unit of from other portions of the property may in the future be limited or eliminated by future development or forces of nature and the Developer in no manner guarantees the continuing existence of any view. Interior photos shown may depict options and upgrades and are not representative of standard features and may not be available for all model types. All fixtures, furniture and items of finish and decoration of residences described herein are for display only and may not to be included with the residence, unless expressly provided in the purchase agreement. All improvements, designs and construction are subject to first obtaining the appropriate federal, state and local permits and approvals for same. These drawings and depictions are conceptual only and are for the convenience of reference. They should not be relied upon as representations, express or implied, of the final detail of the residence. The Developer expressly reserves the right to make modifications, revisions and changes it deemed desirable in its sole and absolute discretion.

Certain items such as the following, which may be seen in model apartments (if any), brochures and/or in illustrations, are not included with the sale of the unit: wall coverings (including paint other than base primer), accent light fixtures, wall ornaments, drapes, blinds, furniture, knickknacks and other decorator accessories, lamps, mirrors, graphics, pictures, plants, wall-hung shelves, wet bars, intercoms, sound systems, kitchen accessories, linens, window shades, security systems, certain built-in fixtures, cabinetry, carpets or other floor coverings and colors, wood trim, other upgraded items, balcony treatments (e.g., tile, stone, marble, brick, chattahoochee, scored concrete or wood trim), barbecues, planters, window screens, landscaping and any other items of this nature which may be added or deleted by Developer from time to time. This list of items (which is not all-inclusive) is provided as an illustration of the type of items built-in or placed in model apartments (if any) or shown in illustrations strictly for the purpose of decoration and example only. There is no obligation for Developer to provide models, but if so provided, the foregoing disclaimers will apply. Certain items, if included with the unit, such as tile, marble, stone, granite, cabinets, wood, stain, grout, wall and ceiling textures, mica and carpeting, are subject to size and color variations, grain and quality variations, and may vary in accordance with price, availability and changes by manufacturer from those shown in the models or in illustrations or in the published list of standard items (if any). If circumstances arise which, in Developer’s opinion, warrant changes of suppliers, manufacturers, brand names, models or items, or if Developer elects to omit certain items, Developer may modify the list of standard features or make substitutions for equipment, material, appliances, brands, models, etc., with items which in Developer’s opinion are of equal or better quality (regardless of cost). All depictions of furniture, appliances, counters, soffits, floor coverings and other matters of detail, including, without limitation, items of finish and decoration, are conceptual only and are not necessarily included in each Unit. Furnishings are only included if and to the extent provided in your purchase agreement. Not all artwork depicted is available for purchase or included in a furniture package. Please contact Developer for additional detail. All prices, plans, specifications, features, amenities and other descriptions are preliminary and are subject to change without notice, as provided in your purchase agreement. Prices do not include optional features or premiums for upgraded units. Price changes may occur that are not yet reflected on this brochure. Buyers should check with the sales center for the most current pricing.

The project graphics, renderings and text provided herein are copyrighted works owned by the Developer. All rights reserved. Unauthorized reproduction, display or other dissemination of such materials is strictly prohibited and constitutes copyright infringement. No real estate broker is authorized to make any representations or other statements regarding the projects, and no agreements with, deposits paid to or other arrangements made with any real estate broker are or shall be binding on the Developer.



PENTHOUSE

— RDAI Finishes and Furniture —

Eighty Seven Park
by Renzo Piano Building Workshop



A gentle touch of simplicity
A reflection of nature
A painting with light
A theory of luxury living
A contemplation of quiet beauty

LIVING ROOM / DINING ROOM / LOUNGE

- 1 staircase marble
- 2 lounge carpet
- 3 calacatta marble
- 4 travertine
- 5 living carpet
- 6 natural wicker
- 7 solid walnut
- 8 gold leather
- 9 textile: chevron abaca écru
- 10 textile: cravache écru
- 11 textile: Spirographie
- 12 textile: Ottoman terracotta
- 13 solid walnut
- 14 clear oak flooring
- 15 textile: Circuit 24 natural
- 16 linen curtain



LIVING ROOM FURNITURE



Christophe Delcourt - Lob low table



Giorgetti - Aton sofa



India Mahdavi - Paravent cannage



StellarWorks - SW Daybed



PP Møbler - Hoop Chair



Atelier Pierre Charpin - La collection tropicale



Sollos - Wed side table



Jonathan Zawada - Affordances side table



De Padova - Circle table lamp



Jan Kath - Artwork 27 Rug

LIVING ROOM VIEW WITH LEGENDS



Hermès -
Carré d'assise

De Padova -
Circle table lamp

Giorgetti -
Aton

Christophe Delcourt -
Lob low table

Atelier Pierre Charpin -
La collection tropicale

PP Möbler -
Hoop Chair

Jan Kath -
Artwork 27 Rug

Martin Szekey -
Bing One Side Table

Stellar Works -
SW Daybed

India Mahdavi -
Paravent cannage

LIVING ROOM VIEW WITH LEGENDS



Giorgetti -
Aton

De Padova -
Circle table lamp

Jonathan
Zawada -
Affordances

Sollos -
Wed side table

Christophe
Delcourt -
Lob low table

PP Møbler -
Hoop Chair PP130

Jan Kath -
Artwork 27 Rug

Giorgetti -
Aton

Hermès -
Carré d'assise

Branca Lisboa -
Aranha chair

DINING ROOM FURNITURE



Drift Studio -
Flylight Miami



Grethe Sørensen -
«Venice 6»



Liaigre -
Staircase reference



Super Indo Natural Austin
Textured Modern Rug

Branca Lisboa -
Aranha chair



By RDAI -
Dining table



DINING ROOM VIEW WITH LEGENDS



Drift Studio -
Flylight Miami

Grethe Sørensen -
«Venice 6»

By RDAI -
Dining table

Super Indo Natural Austin
Textured Modern Rug

Branca Lisboa -
Aranha chair

LOUNGE FURNITURE



Vladimir Kagan -
Serpentine sofa



Bonachina -
Martingala



Poltrona Frau -
Esedra



Christian Astuguevieille -
Hemp stool



Cassina -
Rio Table



Carpet Edition Murano
Ipanema

MASTER SUITE

- 1 bathroom travertine
- 2 sanitary finishing
- 3 textile: jungle life jacquard
- 4 oak structure natural grey
- 5 textile: chevron abaca écru
- 6 textile: toile fine écru
- 7 linen curtain
- 8 natural wicker
- 9 solid walnut
- 10 textile: OP'H sable
- 11 gold leather
- 12 bedroom carpet



MASTER SUITE FURNITURE



Christophe Delcourt -
Leo side table



StudioTwentyseven
Multilaque Coffee Table Pierre Augustin



Kalmar -
Hase floor lamp



PP Møbler -
Hoop Chair PP530



Cassina -
Tokyo chair



By Hands -
Side table Vent contraire lignes



Uta Barth -
«to walk without destination and to see only to see »



Thom Fougere -
Rattan Bench Leibal



Jan Kath -
Artwork 27 Rug

MASTER BEDROOM VIEW WITH LEGENDS



By RDAI -
Suspended light

Uta Barth -
«to walk without
destination and to
see only to see »

Thom Fougere -
Rattan Bench Leibal

Jan Kath -
Artwork 27 Rug

Kalmar -
Hase floor lamp

PP Möbler -
Hoop Chair PP530

StudioTwentyseven
Multilaque Coffee Table
Pierre Augustin

Cassina -
Tokyo

By Hands -
Side table Vent contraire lignes

FAMILY ROOM

- 1 family room carpet
- 2 clear oak flooring
- 3 pattern for side table
- 4 textile: jungle life aloe vera
- 5 textile: toile à bagage miel
- 6 textile: semi de H sauge
- 7 green velvet
- 8 celadon velvet
- 9 terrazzo
- 10 brick terracotta
- 11 linen curtain
- 12 textile: Brio
- 13 textile: Brio



FAMILY ROOM FURNITURE



PP Møbler -
The Chair PP501



Herman Miller -
Bubble ball pendant light



Paola Lenti -
Shell stool



Jean-Baptiste Fastrez -
Etna Table



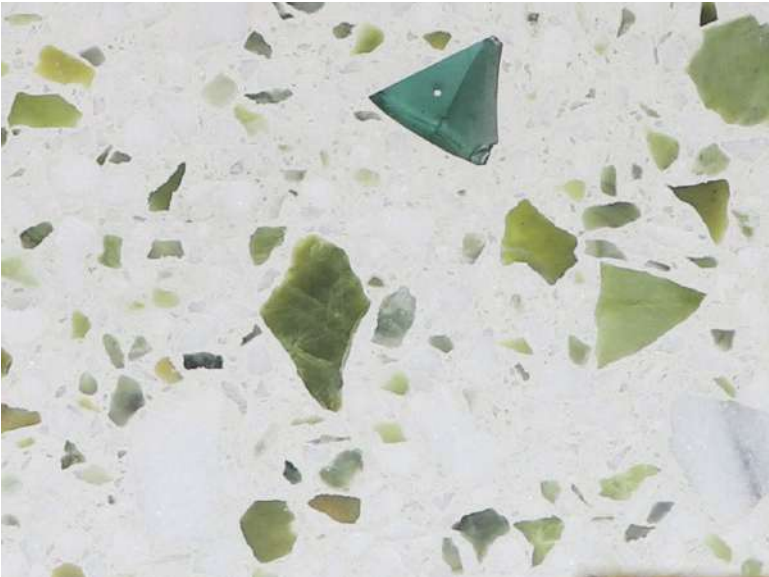
Pierre Paulin -
Tongue chair artiftort



Living Divani
Extrasoft sofa



Alfredo Häberli Nikari -
coffee table



ByRDAI -
Terrazzo table



Yan Kath -
Toblinio Rug



Jean-Baptiste Fastrez -
Etna Table

Pierre Paulin -
Tongue chair artifort

By RDAI -
Terrazzo table

Alfredo Häberli Nikari -
coffee table

Yan Kath -
Toblinio Rug

Living Divani
Extrasoft sofa

Herman Miller -
Bubble ball
pendant light

Paola Lenti -
Shell

OFFICE

- 1 clear oak flooring
- 2 solid walnut
- 3 linen curtain
- 4 gold leather
- 5 tatami wall
- 6 office carpet
- 7 rattan
- 8 stone stucco
- 9 textile: Galatea velvet
- 10 textile: celadon



OFFICE FURNITURE



Hermès «Maison» -
Office desk and chairs



Bertolucci -
Carimbo C341



Targa Sofa -
Gebrüder Thonet Vienna



Jan Kath -
Cloud 2



Stéphane Parmentier -
Table Scala



Elisabeth Frieberg -
«Taos, God, Blue, Pink»

OFFICE VIEW WITH LEGENDS



Hermès -
Office chair

Bertolucci -
Carimbo C341

Hermès -
Office desk

Elisabeth Frieberg -
«Taos, God, Blue, Pink»

Stephane Parmentier -
Table Scala

Jan Kath -
Cloud 2 Rug

Targa Chair -
Gebrüder Thonet Vienna

OUTDOOR LIVING

- 1 terrace stone flooring
- 2 concrete
- 3 solid walnut
- 4 textile: Brio white
- 5 textile: Brio beige
- 6 textile: moulin navy
- 7 textile: clear blue
- 8 textile: dark blue



OUTDOOR LIVING FURNITURE



Trunk table



Dedon -
Tibbo dining table and chairs



Dedon -
Tibbo armchair



Paola Lenti -
Isole side tables



Sollos -
Bossa bar stool



Zanotta -
Ninfea tables



Paola Lenti -
Sabi Sofa



Living divani -
Rabbit & the Tortoise Collection



Bonachina -
Foglia chair



Paola Lenti -
Sabi Sofa

TERRACE VIEW WITH LEGENDS



Paola Lenti -
Cove Sofa

Gervasoni -
Bolla stool

Paola Lenti -
Coffee table

Paola Lenti -
Cove Sofa

Dedon -
Tibbo armchair

This project is being developed by 8701 Collins Development, LLC, a Delaware limited liability company (“Developer”), which has a limited right to use the trademarked names and logos of Terra, Bizzi & Partners Development, New Valley Realty, and Pacific Eagle. Any and all statements, disclosures and/or representations shall be deemed made by Developer and not by any of the above entities, and you agree to look solely to Developer (and not to any of the above entities and/or any of their affiliates) with respect to any and all matters relating to the sales and marketing and/or development of the project.

ORAL REPRESENTATIONS CANNOT BE RELIED UPON AS CORRECTLY STATING THE REPRESENTATIONS OF THE DEVELOPER. FOR CORRECT REPRESENTATIONS, MAKE REFERENCE TO THIS BROCHURE AND TO THE DOCUMENTS REQUIRED BY SECTION 718.503, FLORIDA STATUTES, TO BE FURNISHED BY A DEVELOPER TO A BUYER OR LESSEE. These materials are not intended to be an offer to sell, or solicitation to buy a unit in the condominium. Such an offering shall only be made pursuant to the prospectus (offering circular) for the condominium and no statements should be relied upon unless made in the prospectus or in the applicable purchase agreement. In no event shall any solicitation, offer or sale of a unit in the condominium be made in, or to residents of, any state or country in which such activity would be unlawful.

All images and designs depicted herein are artist’s conceptual renderings, which are based upon preliminary development plans, and are subject to change without notice in the manner provided in the offering documents. All such materials are not to scale and are shown solely for illustrative purposes. Renderings depict proposed views, which are not identical from each unit. No guarantees or representations whatsoever are made that existing or future views of the project and surrounding areas depicted by artist’s conceptual renderings or otherwise described herein, will be provided or, if provided, will be as depicted or described herein. Any view from a unit of from other portions of the property may in the future be limited or eliminated by future development or forces of nature and the Developer in no manner guarantees the continuing existence of any view. Interior photos shown may depict options and upgrades and are not representative of standard features and may not be available for all model types. All fixtures, furniture and items of finish and decoration of residences described herein are for display only and may not be included with the residence, unless expressly provided in the purchase agreement. All improvements, designs and construction are subject to first obtaining the appropriate federal, state and local permits and approvals for same. These drawings and depictions are conceptual only and are for the convenience of reference. They should not be relied upon as representations, express or implied, of the final detail of the residence. The Developer expressly reserves the right to make modifications, revisions and changes it deemed desirable in its sole and absolute discretion.

Certain items such as the following, which may be seen in model apartments (if any), brochures and/or in illustrations, are not included with the sale of the unit: wall coverings (including paint other than base primer), accent light fixtures, wall ornaments, drapes, blinds, furniture, knickknacks and other decorator accessories, lamps, mirrors, graphics, pictures, plants, wall-hung shelves, wet bars, intercoms, sound systems, kitchen accessories, linens, window shades, security systems, certain built-in fixtures, cabinetry, carpets or other floor coverings and colors, wood trim, other upgraded items, balcony treatments (e.g., tile, stone, marble, brick, chattahoochee, scored concrete or wood trim), barbecues, planters, window screens, landscaping and any other items of this nature which may be added or deleted by Developer from time to time. This list of items (which is not all-inclusive) is provided as an illustration of the type of items built-in or placed in model apartments (if any) or shown in illustrations strictly for the purpose of decoration and example only. There is no obligation for Developer to provide models, but if so provided, the foregoing disclaimers will apply. Certain items, if included with the unit, such as tile, marble, stone, granite, cabinets, wood, stain, grout, wall and ceiling textures, mica and carpeting, are subject to size and color variations, grain and quality variations, and may vary in accordance with price, availability and changes by manufacturer from those shown in the models or in illustrations or in the published list of standard items (if any). If circumstances arise which, in Developer’s opinion, warrant changes of suppliers, manufacturers, brand names, models or items, or if Developer elects to omit certain items, Developer may modify the list of standard features or make substitutions for equipment, material, appliances, brands, models, etc., with items which in Developer’s opinion are of equal or better quality (regardless of cost). All depictions of furniture, appliances, counters, soffits, floor coverings and other matters of detail, including, without limitation, items of finish and decoration, are conceptual only and are not necessarily included in each Unit. Furnishings are only included if and to the extent provided in your purchase agreement. Not all artwork depicted is available for purchase or included in a furniture package. Please contact Developer for additional detail. All prices, plans, specifications, features, amenities and other descriptions are preliminary and are subject to change without notice, as provided in your purchase agreement. Prices do not include optional features or premiums for upgraded units. Price changes may occur that are not yet reflected on this brochure. Buyers should check with the sales center for the most current pricing.

The project graphics, renderings and text provided herein are copyrighted works owned by the Developer. All rights reserved. Unauthorized reproduction, display or other dissemination of such materials is strictly prohibited and constitutes copyright infringement. No real estate broker is authorized to make any representations or other statements regarding the projects, and no agreements with, deposits paid to or other arrangements made with any real estate broker are or shall be binding on the Developer.

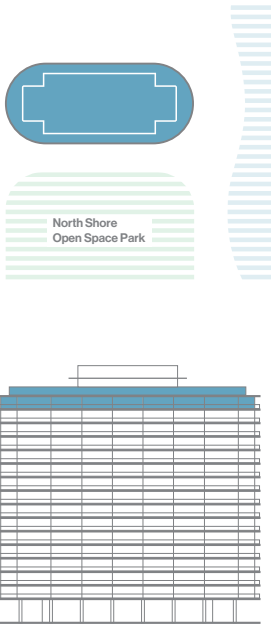


Eighty Seven Park
Penthouse

HIGHLIGHTS

- 18th Floor
- 6 Bedrooms
- 8 Bathrooms
- 1 Powder Room
- 1 Staff
- 2 Entrances
- Gym
- Home Theater

- Rooftop
- 2 Powder Rooms
- 2 Infinity Pools
- 2 Wet Bars
- 2 Summer Kitchens
- Sunrise Terrace
- Sunset Terrace
- Hammm
- Moonlight Cinema
- Putting Green



ROOFTOP



OCEAN

18TH FLOOR

PENTHOUSE
TOTAL AREA

Penthouse Total Area
30,657 ft² / 2,848 m²

18th Floor Area
19,193 ft² / 1,783 m²

Rooftop Area
11,464 ft² / 1,065 m²

INDOOR LIVING

Total Indoor Living
12,410 ft² / 1,153 m²

18th Floor Area
11,768 ft² / 1,093 m²

Rooftop Area
642 ft² / 60 m²

OUTDOOR LIVING

Total Outdoor Living
18,247 ft² / 1,695 m²

18th Floor Area
7,425 ft² / 690 m²

Rooftop Area
10,822 ft² / 1,005 m²



PARK