

LINE 05

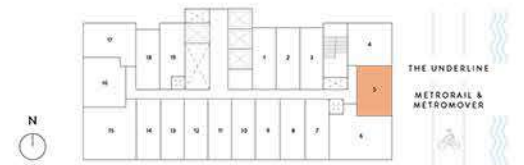
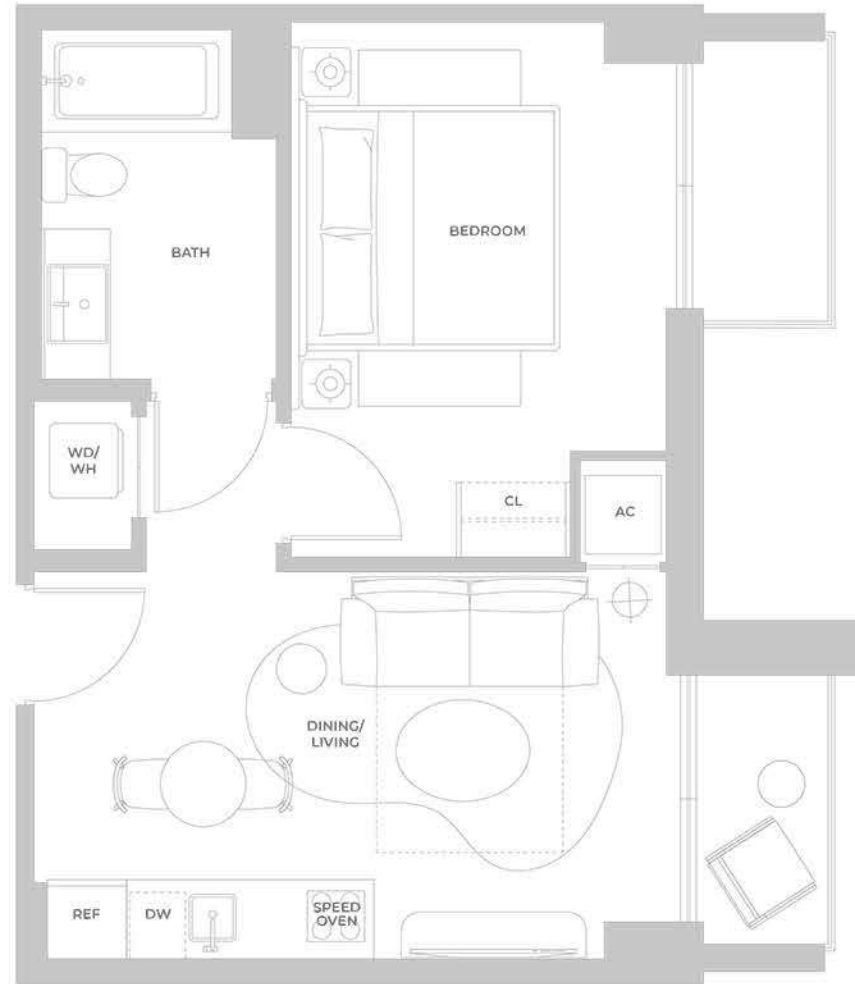
LEVELS 4, 8, 9, 15, 16, 21, 22, 27, 28, 33-35

1 BR SUITE B

1 BEDROOM — 1 BATHROOM

INTERIOR
452 sf | 41.99 m²

EXTERIOR
61 sf | 5.67 m²



ORAL REPRESENTATIONS CANNOT BE RELIED UPON AS CORRECTLY STATING THE REPRESENTATIONS OF THE DEVELOPER. FOR CORRECT REPRESENTATIONS, MAKE REFERENCE TO THIS BROCHURE AND TO THE DOCUMENTS REQUIRED BY SECTION 718.502, FLORIDA STATUTES, TO BE FURNISHED BY A DEVELOPER TO A BUYER OR LESSEE. Stated square footages and dimensions of residences are measured to the exterior boundaries of the exterior walls and the centerline of interior dividing walls between units and do not vary from the square footage and dimensions that would be determined by using the description and definition of the "Unit" set forth in the Declaration of Condominium, which generally only includes the interior airspace between the perimeter walls and excludes all interior structural components and other common elements. The method of measurement used in these materials is generally used in sales materials and is provided to allow a prospective buyer to compare the Units with units in other projects that utilize the same method. Refer to Exhibit "A" to the Declaration of Condominium for the unit dimensions calculated based on the description and definition of the "Unit" set forth in the Declaration. Terraces are not part of the Unit. Measurements of rooms set forth on this floorplan are generally taken at the farthest points of each given room (as described above and as if the rooms were a perfect rectangle), without regard for any alcoves or variations. Accordingly, the interior air space dimensions of the actual room will typically be smaller than the product obtained by multiplying the stated length and width. All measurements are estimates based on preliminary plans and will vary with actual construction. All floor plans, specifications and other development plans are proposed and conceptual only, and are subject to change and will not necessarily accurately reflect the final plans and specifications.