

# LINE 01

LEVELS 3, 7, 14, 20, 26, 32

KING D  
STUDIO – 1 BATHROOM

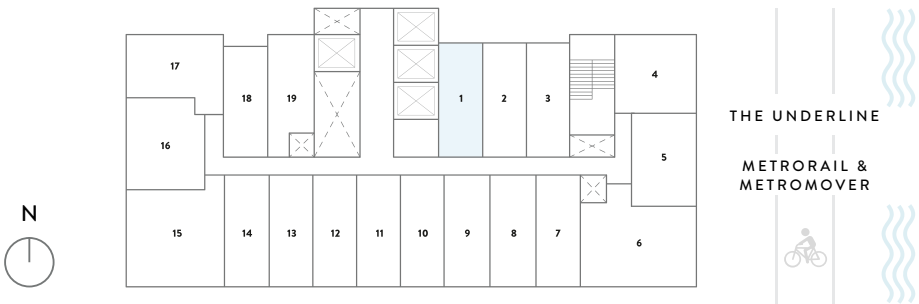
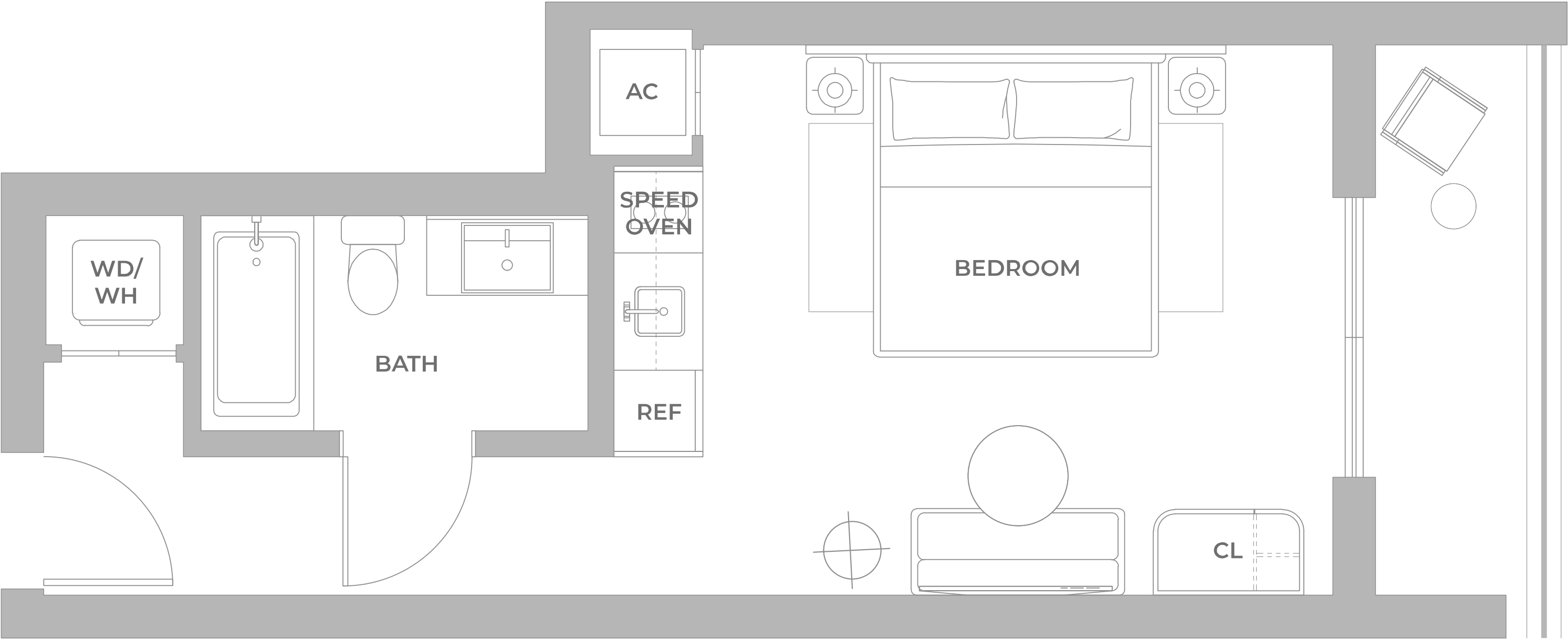
DOMUS FLATS — BRICKELL CENTER

INTERIOR

467 sf | 43.38 m²

EXTERIOR

69.3 sf | 6.43 m²



© ORAL REPRESENTATIONS CANNOT BE RELIED UPON AS CORRECTLY STATING THE REPRESENTATIONS OF THE DEVELOPER. FOR CORRECT REPRESENTATIONS, MAKE REFERENCE TO THIS BROCHURE AND TO THE DOCUMENTS REQUIRED BY SECTION 718.503, FLORIDA STATUTES, TO BE FURNISHED BY A DEVELOPER TO A BUYER OR LESSEE. Stated square footages and dimensions of residences are measured to the exterior boundaries of the exterior walls and the centerline of interior demising walls between units and in fact vary from the square footages and dimensions that would be determined by using the description and definition of the “Unit” set forth in the Declaration of Condominium, which generally only includes the interior airspace between the perimeter walls and excludes all interior structural components and other common elements. The method of measurement used in these materials is generally used in sales materials and is provided to allow a prospective buyer to compare the Units with units in other projects that utilize the same method. Refer to Exhibit “2” to the Declaration of Condominium for the unit dimensions calculated based on the description and definition of the “Unit” set forth in the Declaration. Terraces are not part of the Unit. Measurements of rooms set forth on this floorplan are generally taken at the farthest points of each given room (as described above and as if the room were a perfect rectangle), without regard for any cutouts or variations. Accordingly, the interior air space dimensions of the actual room will typically be smaller than the product obtained by multiplying the stated length and width. All measurements are estimates based on preliminary plans and will vary with actual construction. All floor plans, specifications and other development plans are proposed and conceptual only, and are subject to change and will not necessarily accurately reflect the final plans and specifications.

# LINE 01

LEVELS 4-6, 8-12, 15-19, 21-25, 27-31, 33-35

KING D  
STUDIO – 1 BATHROOM

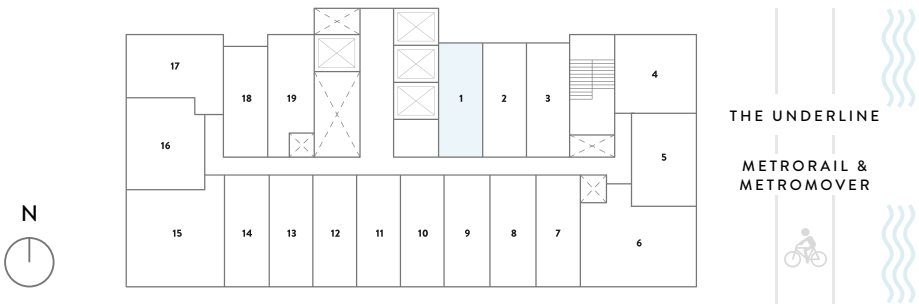
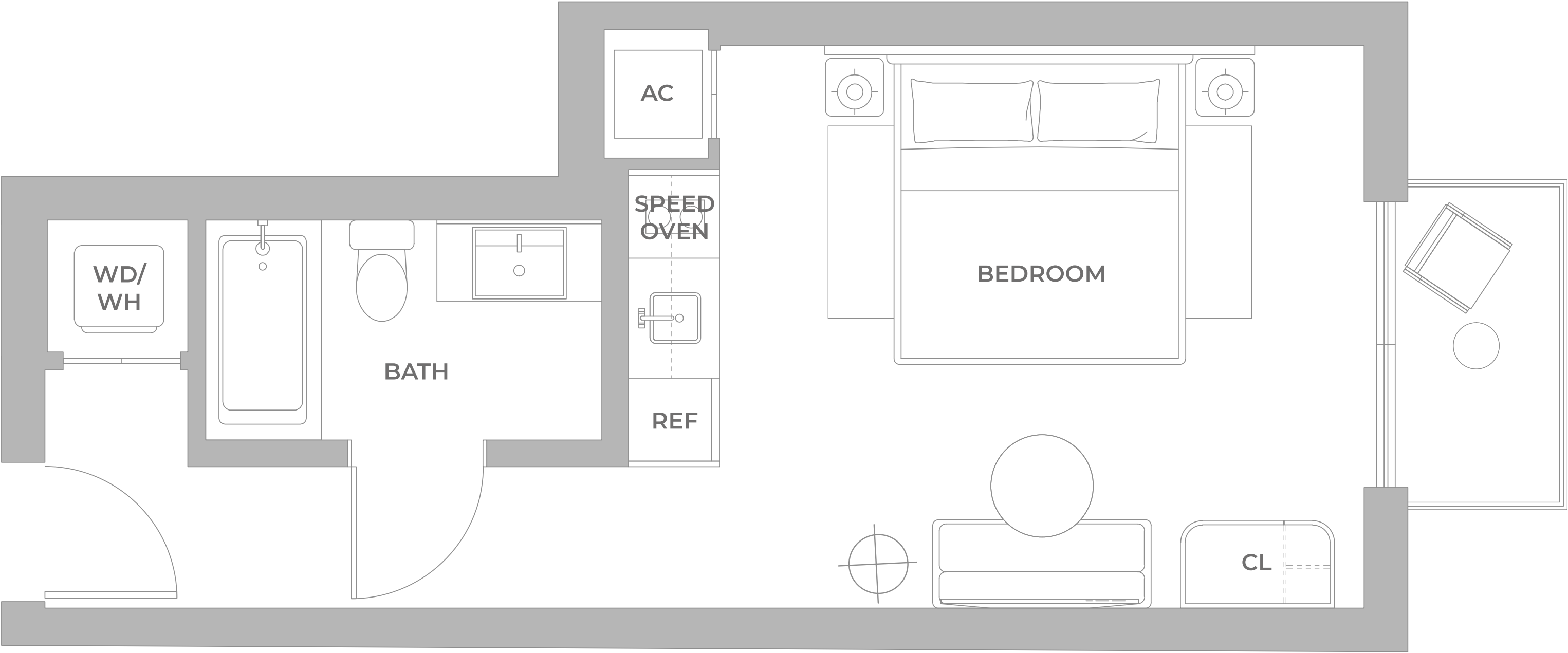
DOMUS FLATS — BRICKELL CENTER

INTERIOR

467 sf | 43.38 m²

EXTERIOR

25.9 sf | 2.41 m²



© ORAL REPRESENTATIONS CANNOT BE RELIED UPON AS CORRECTLY STATING THE REPRESENTATIONS OF THE DEVELOPER. FOR CORRECT REPRESENTATIONS, MAKE REFERENCE TO THIS BROCHURE AND TO THE DOCUMENTS REQUIRED BY SECTION 718.503, FLORIDA STATUTES, TO BE FURNISHED BY A DEVELOPER TO A BUYER OR LESSEE. Stated square footages and dimensions of residences are measured to the exterior boundaries of the exterior walls and the centerline of interior demising walls between units and in fact vary from the square footages and dimensions that would be determined by using the description and definition of the “Unit” set forth in the Declaration of Condominium, which generally only includes the interior airspace between the perimeter walls and excludes all interior structural components and other common elements. The method of measurement used in these materials is generally used in sales materials and is provided to allow a prospective buyer to compare the Units with units in other projects that utilize the same method. Refer to Exhibit “2” to the Declaration of Condominium for the unit dimensions calculated based on the description and definition of the “Unit” set forth in the Declaration. Terraces are not part of the Unit. Measurements of rooms set forth on this floorplan are generally taken at the farthest points of each given room (as described above and as if the room were a perfect rectangle), without regard for any cutouts or variations. Accordingly, the interior air space dimensions of the actual room will typically be smaller than the product obtained by multiplying the stated length and width. All measurements are estimates based on preliminary plans and will vary with actual construction. All floor plans, specifications and other development plans are proposed and conceptual only, and are subject to change and will not necessarily accurately reflect the final plans and specifications.

# LINE 02

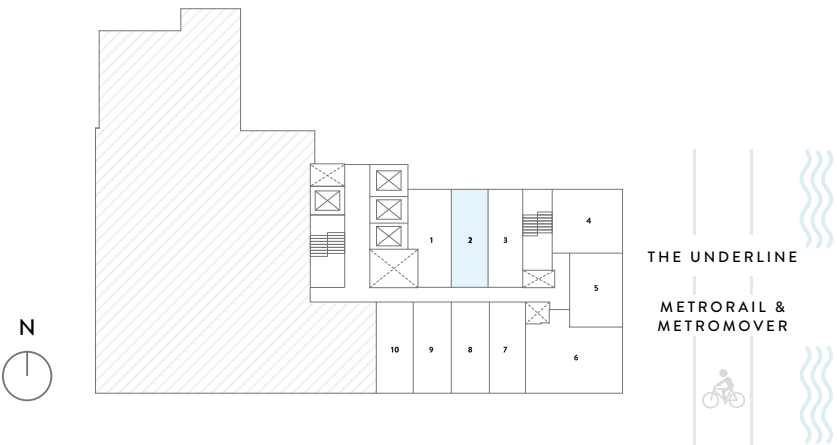
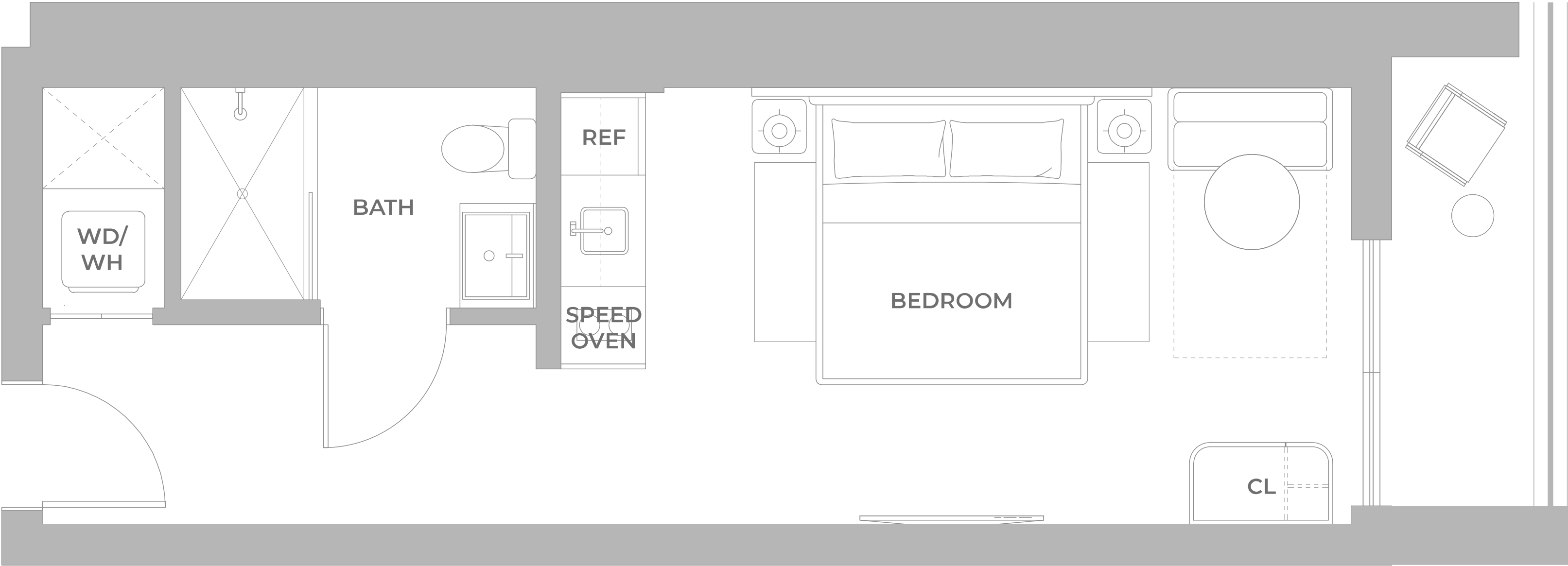
LEVEL 3

KING E  
STUDIO – 1 BATHROOM

DOMUS FLATS — BRICKELL CENTER

INTERIOR  
417 sf | 38.74 m²

EXTERIOR  
53.6 sf | 4.98 m²



© ORAL REPRESENTATIONS CANNOT BE RELIED UPON AS CORRECTLY STATING THE REPRESENTATIONS OF THE DEVELOPER. FOR CORRECT REPRESENTATIONS, MAKE REFERENCE TO THIS BROCHURE AND TO THE DOCUMENTS REQUIRED BY SECTION 718.503, FLORIDA STATUTES, TO BE FURNISHED BY A DEVELOPER TO A BUYER OR LESSEE. Stated square footages and dimensions of residences are measured to the exterior boundaries of the exterior walls and the centerline of interior demising walls between units and in fact vary from the square footages and dimensions that would be determined by using the description and definition of the “Unit” set forth in the Declaration of Condominium, which generally only includes the interior airspace between the perimeter walls and excludes all interior structural components and other common elements. The method of measurement used in these materials is generally used in sales materials and is provided to allow a prospective buyer to compare the Units with units in other projects that utilize the same method. Refer to Exhibit “2” to the Declaration of Condominium for the unit dimensions calculated based on the description and definition of the “Unit” set forth in the Declaration. Terraces are not part of the Unit. Measurements of rooms set forth on this floorplan are generally taken at the farthest points of each given room (as described above and as if the room were a perfect rectangle), without regard for any cutouts or variations. Accordingly, the interior air space dimensions of the actual room will typically be smaller than the product obtained by multiplying the stated length and width. All measurements are estimates based on preliminary plans and will vary with actual construction. All floor plans, specifications and other development plans are proposed and conceptual only, and are subject to change and will not necessarily accurately reflect the final plans and specifications.

LINE 02

LEVELS 4-6, 8-12, 15-19, 21-25, 27-31, 33-35

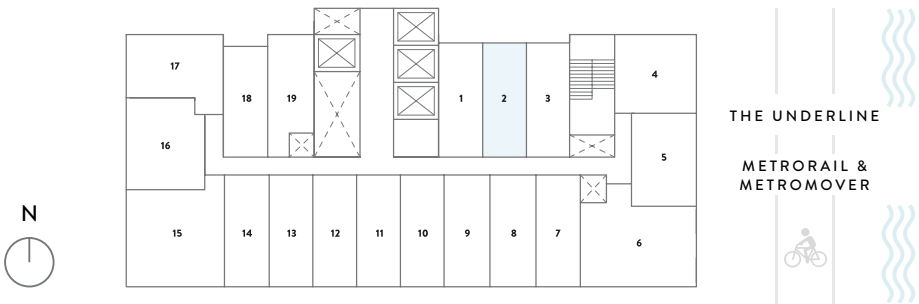
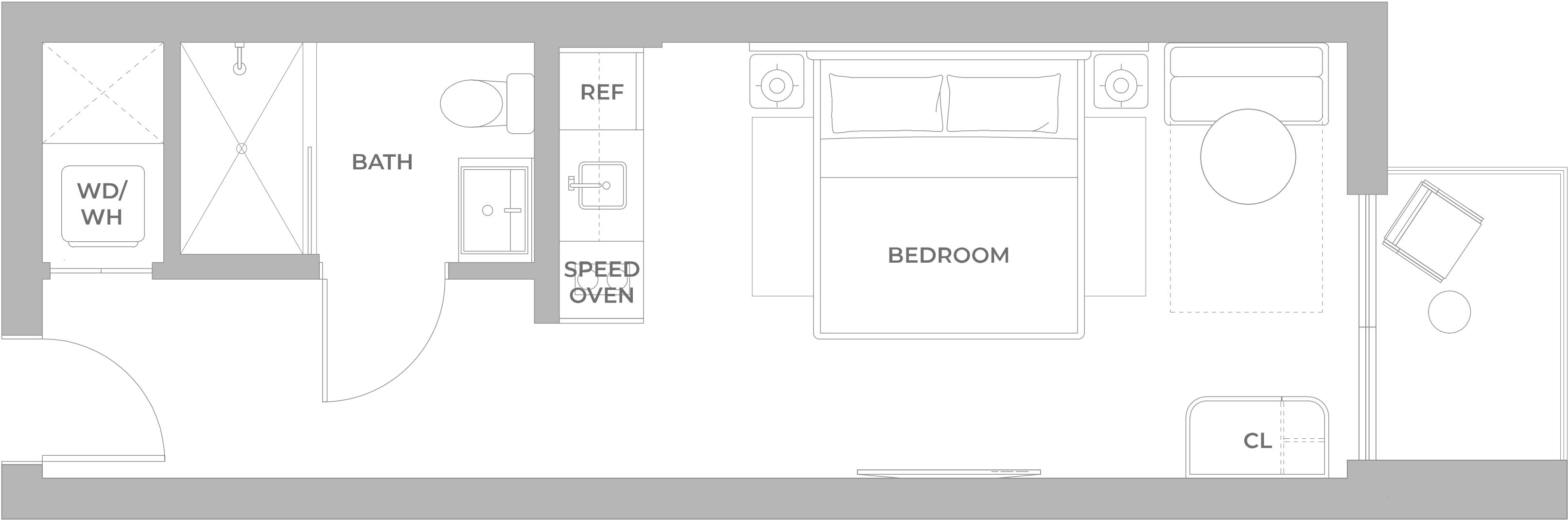
KING E  
STUDIO — 1 BATHROOM

INTERIOR

417 sf | 38.74 m²

EXTERIOR

29.1 sf | 2.70 m²



© ORAL REPRESENTATIONS CANNOT BE RELIED UPON AS CORRECTLY STATING THE REPRESENTATIONS OF THE DEVELOPER. FOR CORRECT REPRESENTATIONS, MAKE REFERENCE TO THIS BROCHURE AND TO THE DOCUMENTS REQUIRED BY SECTION 718.503, FLORIDA STATUTES, TO BE FURNISHED BY A DEVELOPER TO A BUYER OR LESSEE. Stated square footages and dimensions of residences are measured to the exterior boundaries of the exterior walls and the centerline of interior demising walls between units and in fact vary from the square footages and dimensions that would be determined by using the description and definition of the “Unit” set forth in the Declaration of Condominium, which generally only includes the interior airspace between the perimeter walls and excludes all interior structural components and other common elements. The method of measurement used in these materials is generally used in sales materials and is provided to allow a prospective buyer to compare the Units with units in other projects that utilize the same method. Refer to Exhibit “2” to the Declaration of Condominium for the unit dimensions calculated based on the description and definition of the “Unit” set forth in the Declaration. Terraces are not part of the Unit. Measurements of rooms set forth on this floorplan are generally taken at the farthest points of each given room (as described above and as if the room were a perfect rectangle), without regard for any cutouts or variations. Accordingly, the interior air space dimensions of the actual room will typically be smaller than the product obtained by multiplying the stated length and width. All measurements are estimates based on preliminary plans and will vary with actual construction. All floor plans, specifications and other development plans are proposed and conceptual only, and are subject to change and will not necessarily accurately reflect the final plans and specifications.

# LINE 04

LEVELS 8, 15, 21, 27, 33-35

1 BR SUITE A  
1 BEDROOM – 1 BATHROOM

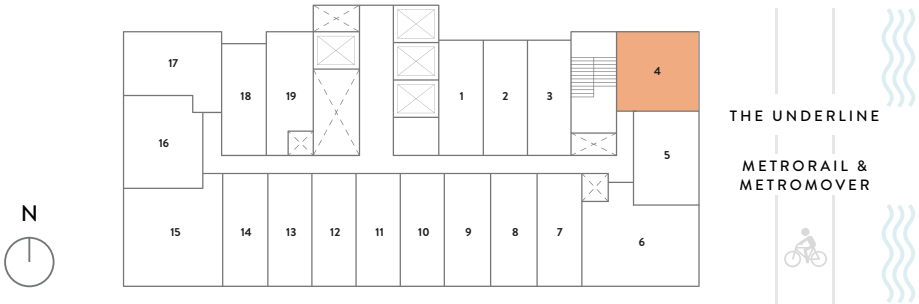
DOMUS FLATS — BRICKELL CENTER

INTERIOR

517 sf | 48.03 m²

EXTERIOR

28.3 sf | 2.63 m²



© ORAL REPRESENTATIONS CANNOT BE RELIED UPON AS CORRECTLY STATING THE REPRESENTATIONS OF THE DEVELOPER. FOR CORRECT REPRESENTATIONS, MAKE REFERENCE TO THIS BROCHURE AND TO THE DOCUMENTS REQUIRED BY SECTION 718.503, FLORIDA STATUTES, TO BE FURNISHED BY A DEVELOPER TO A BUYER OR LESSEE. Stated square footages and dimensions of residences are measured to the exterior boundaries of the exterior walls and the centerline of interior demising walls between units and in fact vary from the square footages and dimensions that would be determined by using the description and definition of the “Unit” set forth in the Declaration of Condominium, which generally only includes the interior airspace between the perimeter walls and excludes all interior structural components and other common elements. The method of measurement used in these materials is generally used in sales materials and is provided to allow a prospective buyer to compare the Units with units in other projects that utilize the same method. Refer to Exhibit “2” to the Declaration of Condominium for the unit dimensions calculated based on the description and definition of the “Unit” set forth in the Declaration. Terraces are not part of the Unit. Measurements of rooms set forth on this floorplan are generally taken at the farthest points of each given room (as described above and as if the room were a perfect rectangle), without regard for any cutouts or variations. Accordingly, the interior air space dimensions of the actual room will typically be smaller than the product obtained by multiplying the stated length and width. All measurements are estimates based on preliminary plans and will vary with actual construction. All floor plans, specifications and other development plans are proposed and conceptual only, and are subject to change and will not necessarily accurately reflect the final plans and specifications.

# LINE 05

LEVEL 3

1 BR SUITE B - ADA HEARING  
1 BEDROOM – 1 BATHROOM

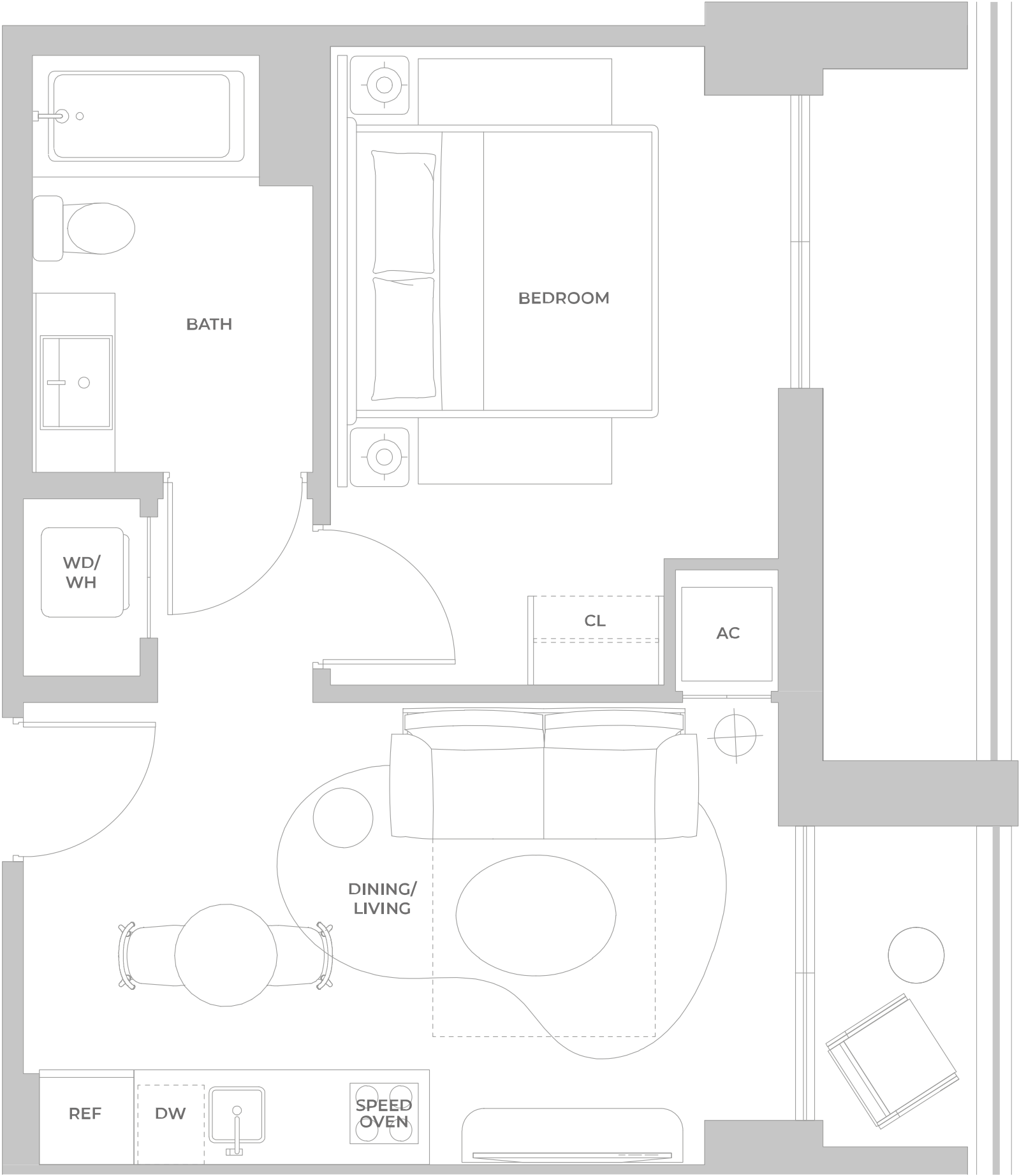
DOMUS FLATS — BRICKELL CENTER

INTERIOR

452 sf | 41.99 m²

EXTERIOR

109.8 sf | 10.2 m²



® ORAL REPRESENTATIONS CANNOT BE RELIED UPON AS CORRECTLY STATING THE REPRESENTATIONS OF THE DEVELOPER. FOR CORRECT REPRESENTATIONS, MAKE REFERENCE TO THIS BROCHURE AND TO THE DOCUMENTS REQUIRED BY SECTION 718.503, FLORIDA STATUTES, TO BE FURNISHED BY A DEVELOPER TO A BUYER OR LESSEE. Stated square footages and dimensions of residences are measured to the exterior boundaries of the exterior walls and the centerline of interior demising walls between units and in fact vary from the square footages and dimensions that would be determined by using the description and definition of the “Unit” set forth in the Declaration of Condominium, which generally only includes the interior airspace between the perimeter walls and excludes all interior structural components and other common elements. The method of measurement used in these materials is generally used in sales materials and is provided to allow a prospective buyer to compare the Units with units in other projects that utilize the same method. Refer to Exhibit “2” to the Declaration of Condominium for the unit dimensions calculated based on the description and definition of the “Unit” set forth in the Declaration. Terraces are not part of the Unit. Measurements of rooms set forth on this floorplan are generally taken at the farthest points of each given room (as described above and as if the room were a perfect rectangle), without regard for any cutouts or variations. Accordingly, the interior air space dimensions of the actual room will typically be smaller than the product obtained by multiplying the stated length and width. All measurements are estimates based on preliminary plans and will vary with actual construction. All floor plans, specifications and other development plans are proposed and conceptual only, and are subject to change and will not necessarily accurately reflect the final plans and specifications.

# LINE 05

LEVEL 6

1 BR SUITE B - ADA HEARING  
1 BEDROOM – 1 BATHROOM

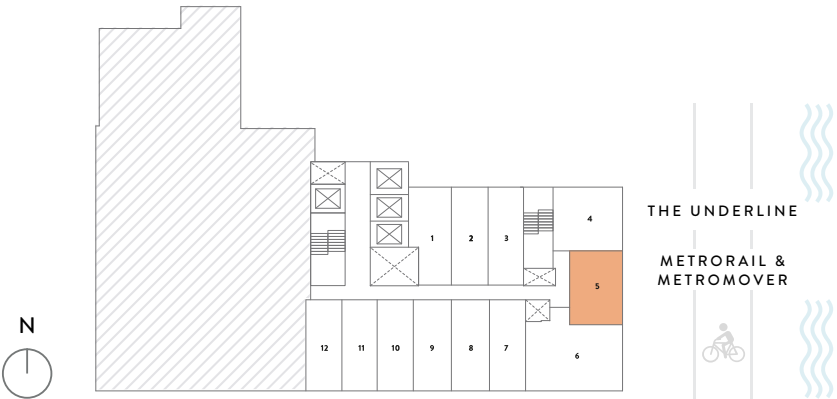
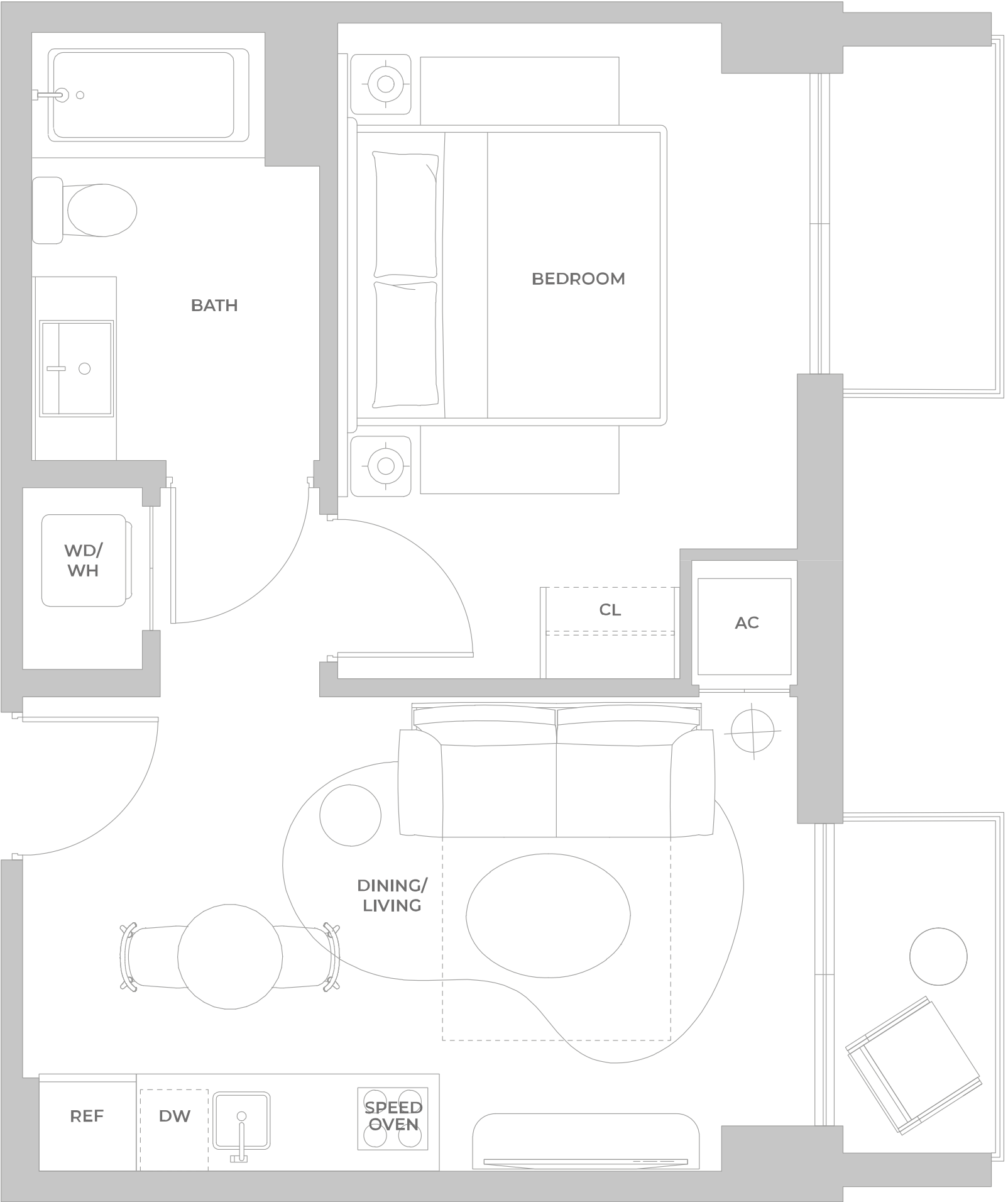
DOMUS FLATS — BRICKELL CENTER

INTERIOR

452 sf | 41.99 m²

EXTERIOR

56.5 sf | 5.25 m²



© ORAL REPRESENTATIONS CANNOT BE RELIED UPON AS CORRECTLY STATING THE REPRESENTATIONS OF THE DEVELOPER. FOR CORRECT REPRESENTATIONS, MAKE REFERENCE TO THIS BROCHURE AND TO THE DOCUMENTS REQUIRED BY SECTION 718.503, FLORIDA STATUTES, TO BE FURNISHED BY A DEVELOPER TO A BUYER OR LESSEE. Stated square footages and dimensions of residences are measured to the exterior boundaries of the exterior walls and the centerline of interior demising walls between units and in fact vary from the square footages and dimensions that would be determined by using the description and definition of the “Unit” set forth in the Declaration of Condominium, which generally only includes the interior airspace between the perimeter walls and excludes all interior structural components and other common elements. The method of measurement used in these materials is generally used in sales materials and is provided to allow a prospective buyer to compare the Units with units in other projects that utilize the same method. Refer to Exhibit “2” to the Declaration of Condominium for the unit dimensions calculated based on the description and definition of the “Unit” set forth in the Declaration. Terraces are not part of the Unit. Measurements of rooms set forth on this floorplan are generally taken at the farthest points of each given room (as described above and as if the room were a perfect rectangle), without regard for any cutouts or variations. Accordingly, the interior air space dimensions of the actual room will typically be smaller than the product obtained by multiplying the stated length and width. All measurements are estimates based on preliminary plans and will vary with actual construction. All floor plans, specifications and other development plans are proposed and conceptual only, and are subject to change and will not necessarily accurately reflect the final plans and specifications.

# LINE 05

LEVEL 7

1 BR SUITE B - ADA HEARING  
1 BEDROOM – 1 BATHROOM

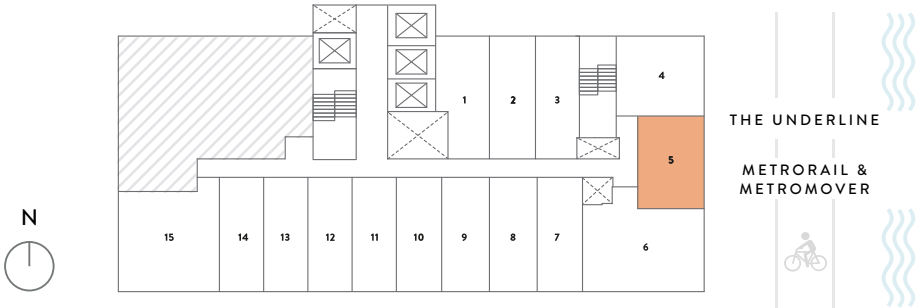
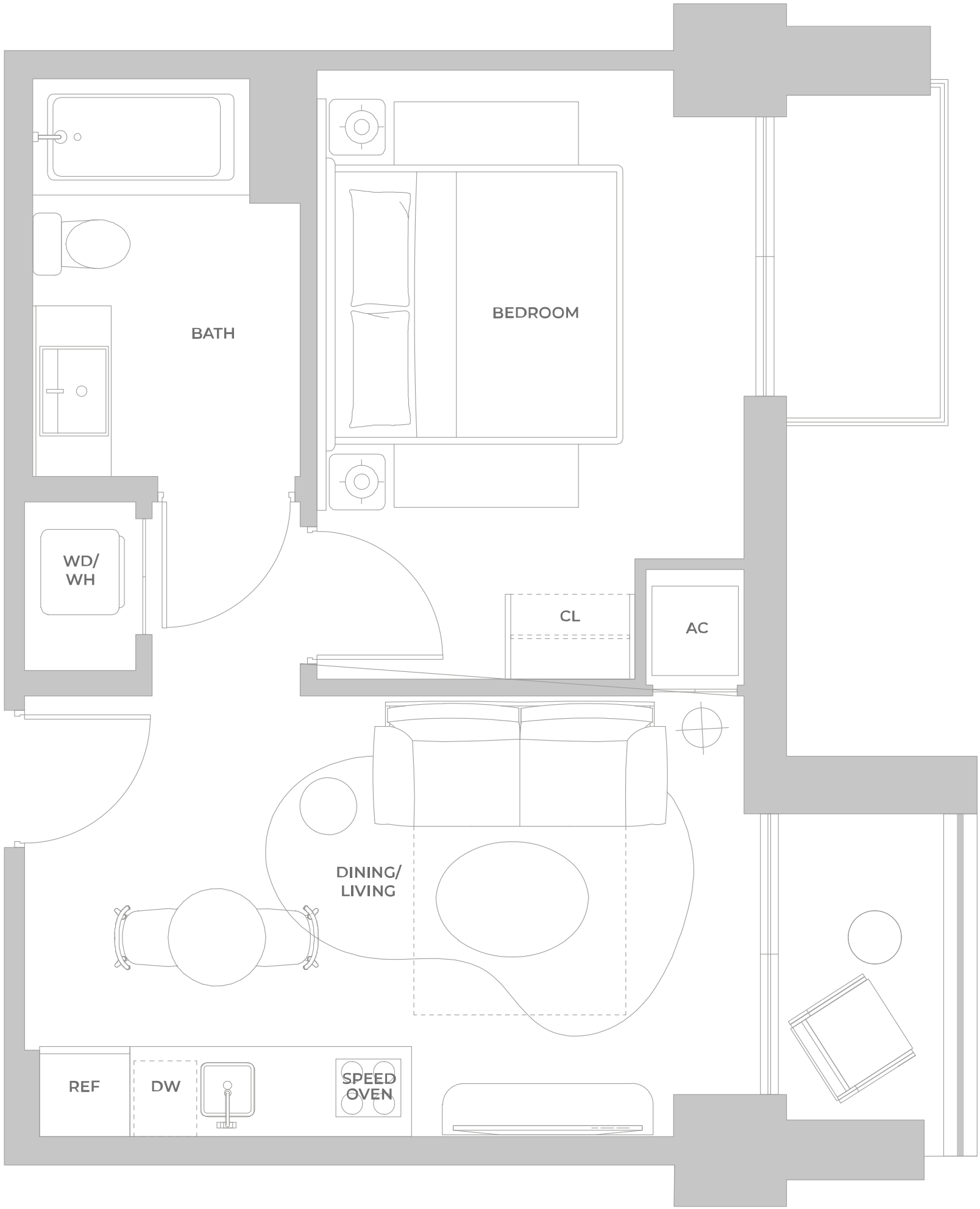
DOMUS FLATS — BRICKELL CENTER

INTERIOR

452 sf | 41.99 m²

EXTERIOR

67.8 sf | 6.29 m²



© ORAL REPRESENTATIONS CANNOT BE RELIED UPON AS CORRECTLY STATING THE REPRESENTATIONS OF THE DEVELOPER. FOR CORRECT REPRESENTATIONS, MAKE REFERENCE TO THIS BROCHURE AND TO THE DOCUMENTS REQUIRED BY SECTION 718.503, FLORIDA STATUTES, TO BE FURNISHED BY A DEVELOPER TO A BUYER OR LESSEE. Stated square footages and dimensions of residences are measured to the exterior boundaries of the exterior walls and the centerline of interior demising walls between units and in fact vary from the square footages and dimensions that would be determined by using the description and definition of the "Unit" set forth in the Declaration of Condominium, which generally only includes the interior airspace between the perimeter walls and excludes all interior structural components and other common elements. The method of measurement used in these materials is generally used in sales materials and is provided to allow a prospective buyer to compare the Units with units in other projects that utilize the same method. Refer to Exhibit "2" to the Declaration of Condominium for the unit dimensions calculated based on the description and definition of the "Unit" set forth in the Declaration. Terraces are not part of the Unit. Measurements of rooms set forth on this floorplan are generally taken at the farthest points of each given room (as described above and as if the room were a perfect rectangle), without regard for any cutouts or variations. Accordingly, the interior air space dimensions of the actual room will typically be smaller than the product obtained by multiplying the stated length and width. All measurements are estimates based on preliminary plans and will vary with actual construction. All floor plans, specifications and other development plans are proposed and conceptual only, and are subject to change and will not necessarily accurately reflect the final plans and specifications.



# LINE 05

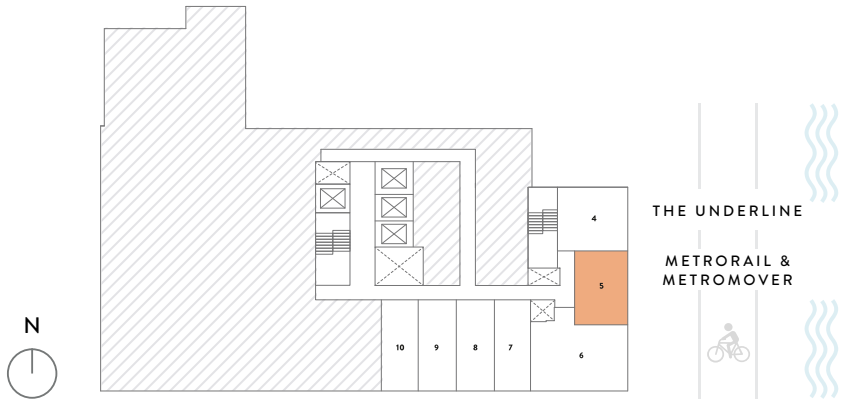
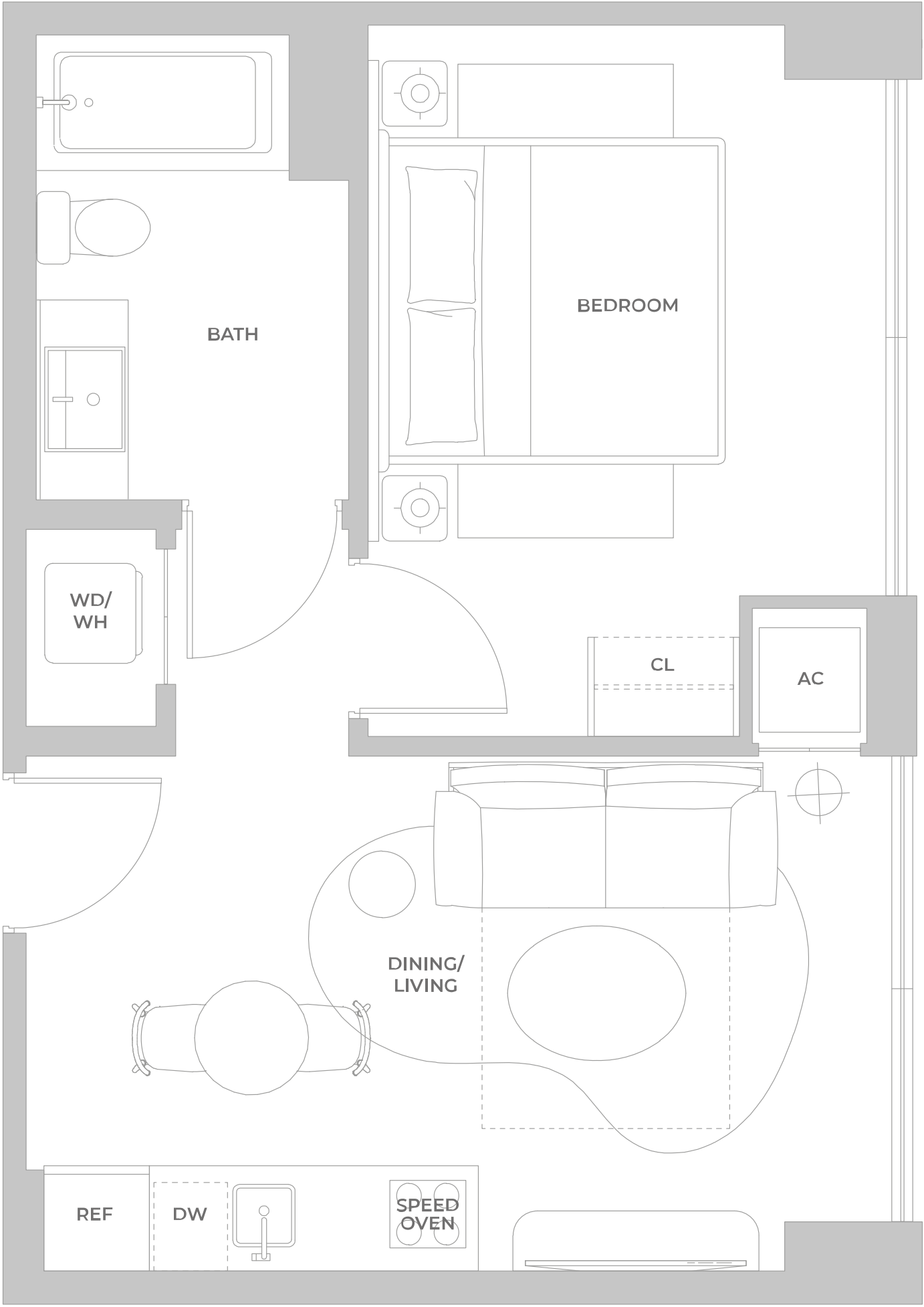
LEVEL 2

1 BR SUITE B  
1 BEDROOM – 1 BATHROOM

DOMUS FLATS — BRICKELL CENTER

INTERIOR

459 sf | 42.64 m²



© ORAL REPRESENTATIONS CANNOT BE RELIED UPON AS CORRECTLY STATING THE REPRESENTATIONS OF THE DEVELOPER. FOR CORRECT REPRESENTATIONS, MAKE REFERENCE TO THIS BROCHURE AND TO THE DOCUMENTS REQUIRED BY SECTION 718.503, FLORIDA STATUTES, TO BE FURNISHED BY A DEVELOPER TO A BUYER OR LESSEE. Stated square footages and dimensions of residences are measured to the exterior boundaries of the exterior walls and the centerline of interior demising walls between units and in fact vary from the square footages and dimensions that would be determined by using the description and definition of the “Unit” set forth in the Declaration of Condominium, which generally only includes the interior airspace between the perimeter walls and excludes all interior structural components and other common elements. The method of measurement used in these materials is generally used in sales materials and is provided to allow a prospective buyer to compare the Units with units in other projects that utilize the same method. Refer to Exhibit “2” to the Declaration of Condominium for the unit dimensions calculated based on the description and definition of the “Unit” set forth in the Declaration. Terraces are not part of the Unit. Measurements of rooms set forth on this floorplan are generally taken at the farthest points of each given room (as described above and as if the room were a perfect rectangle), without regard for any cutouts or variations. Accordingly, the interior air space dimensions of the actual room will typically be smaller than the product obtained by multiplying the stated length and width. All measurements are estimates based on preliminary plans and will vary with actual construction. All floor plans, specifications and other development plans are proposed and conceptual only, and are subject to change and will not necessarily accurately reflect the final plans and specifications.

# LINE 02

LEVELS 7, 14, 20, 26, 32

KING E  
STUDIO – 1 BATHROOM

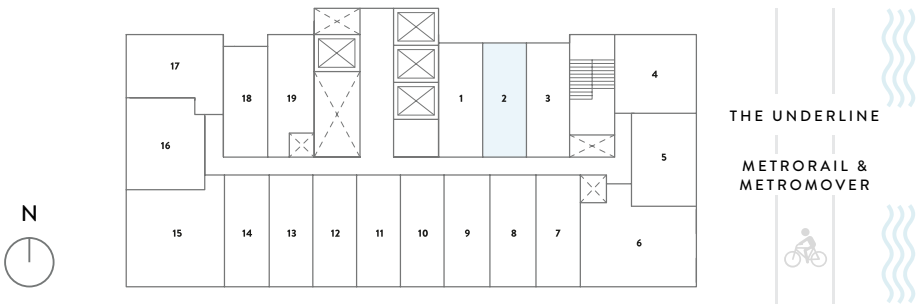
DOMUS FLATS — BRICKELL CENTER

INTERIOR

417 sf | 38.74 m²

EXTERIOR

54 sf | 5.02 m²



© ORAL REPRESENTATIONS CANNOT BE RELIED UPON AS CORRECTLY STATING THE REPRESENTATIONS OF THE DEVELOPER. FOR CORRECT REPRESENTATIONS, MAKE REFERENCE TO THIS BROCHURE AND TO THE DOCUMENTS REQUIRED BY SECTION 718.503, FLORIDA STATUTES, TO BE FURNISHED BY A DEVELOPER TO A BUYER OR LESSEE. Stated square footages and dimensions of residences are measured to the exterior boundaries of the exterior walls and the centerline of interior demising walls between units and in fact vary from the square footages and dimensions that would be determined by using the description and definition of the "Unit" set forth in the Declaration of Condominium, which generally only includes the interior airspace between the perimeter walls and excludes all interior structural components and other common elements. The method of measurement used in these materials is generally used in sales materials and is provided to allow a prospective buyer to compare the Units with units in other projects that utilize the same method. Refer to Exhibit "2" to the Declaration of Condominium for the unit dimensions calculated based on the description and definition of the "Unit" set forth in the Declaration. Terraces are not part of the Unit. Measurements of rooms set forth on this floorplan are generally taken at the farthest points of each given room (as described above and as if the room were a perfect rectangle), without regard for any cutouts or variations. Accordingly, the interior air space dimensions of the actual room will typically be smaller than the product obtained by multiplying the stated length and width. All measurements are estimates based on preliminary plans and will vary with actual construction. All floor plans, specifications and other development plans are proposed and conceptual only, and are subject to change and will not necessarily accurately reflect the final plans and specifications.

# LINE 03

LEVELS 3, 5, 10, 17, 23, 29

KING E  
STUDIO – 1 BATHROOM

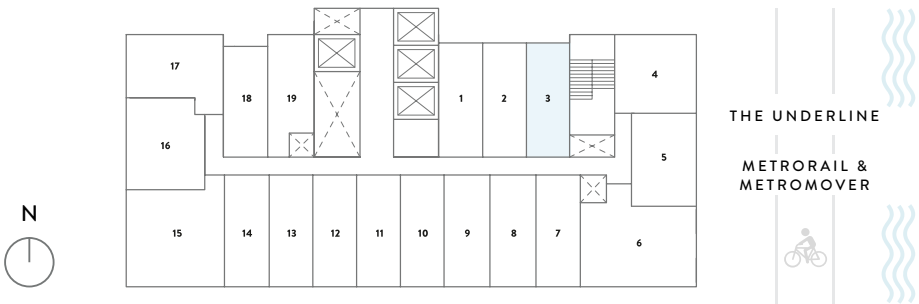
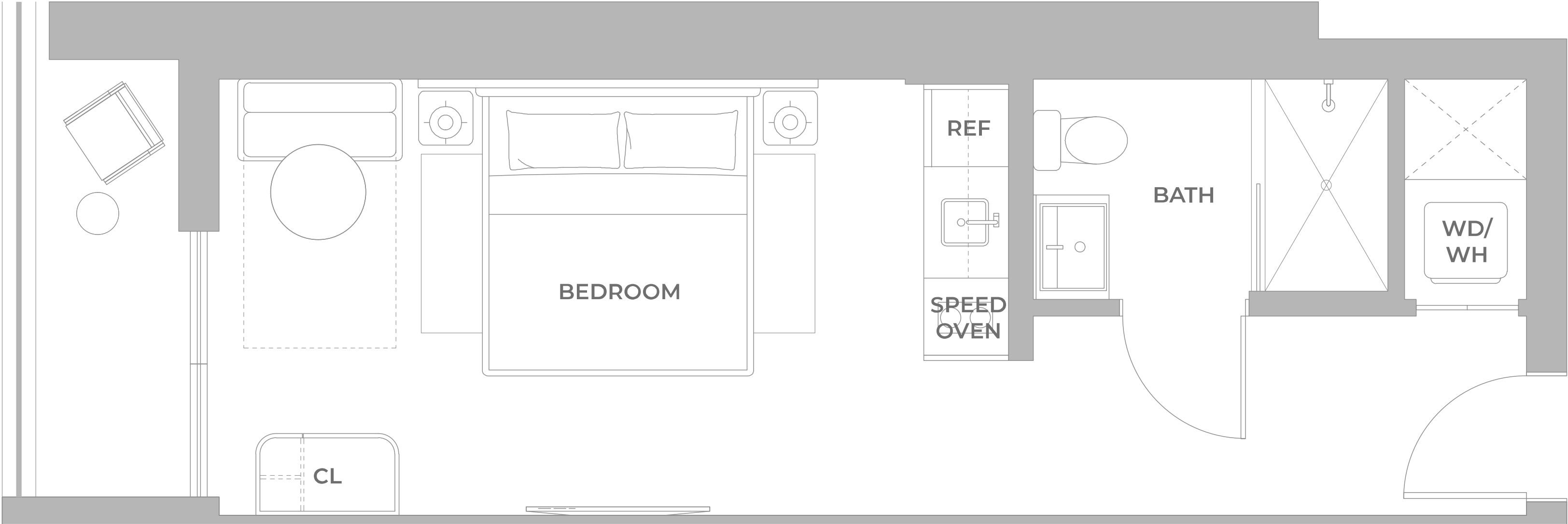
DOMUS FLATS — BRICKELL CENTER

INTERIOR

393 sf | 36.51 m²

EXTERIOR

54.2 sf | 5.12 m²



© ORAL REPRESENTATIONS CANNOT BE RELIED UPON AS CORRECTLY STATING THE REPRESENTATIONS OF THE DEVELOPER. FOR CORRECT REPRESENTATIONS, MAKE REFERENCE TO THIS BROCHURE AND TO THE DOCUMENTS REQUIRED BY SECTION 718.503, FLORIDA STATUTES, TO BE FURNISHED BY A DEVELOPER TO A BUYER OR LESSEE. Stated square footages and dimensions of residences are measured to the exterior boundaries of the exterior walls and the centerline of interior demising walls between units and in fact vary from the square footages and dimensions that would be determined by using the description and definition of the "Unit" set forth in the Declaration of Condominium, which generally only includes the interior airspace between the perimeter walls and excludes all interior structural components and other common elements. The method of measurement used in these materials is generally used in sales materials and is provided to allow a prospective buyer to compare the Units with units in other projects that utilize the same method. Refer to Exhibit "2" to the Declaration of Condominium for the unit dimensions calculated based on the description and definition of the "Unit" set forth in the Declaration. Terraces are not part of the Unit. Measurements of rooms set forth on this floorplan are generally taken at the farthest points of each given room (as described above and as if the room were a perfect rectangle), without regard for any cutouts or variations. Accordingly, the interior air space dimensions of the actual room will typically be smaller than the product obtained by multiplying the stated length and width. All measurements are estimates based on preliminary plans and will vary with actual construction. All floor plans, specifications and other development plans are proposed and conceptual only, and are subject to change and will not necessarily accurately reflect the final plans and specifications.

# LINE 03

LEVELS 4, 6, 7, 11, 12, 14, 18-20, 24-26, 30-32

KING E  
STUDIO – 1 BATHROOM

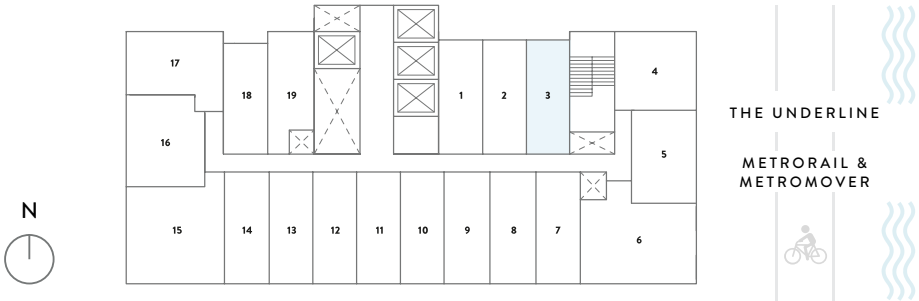
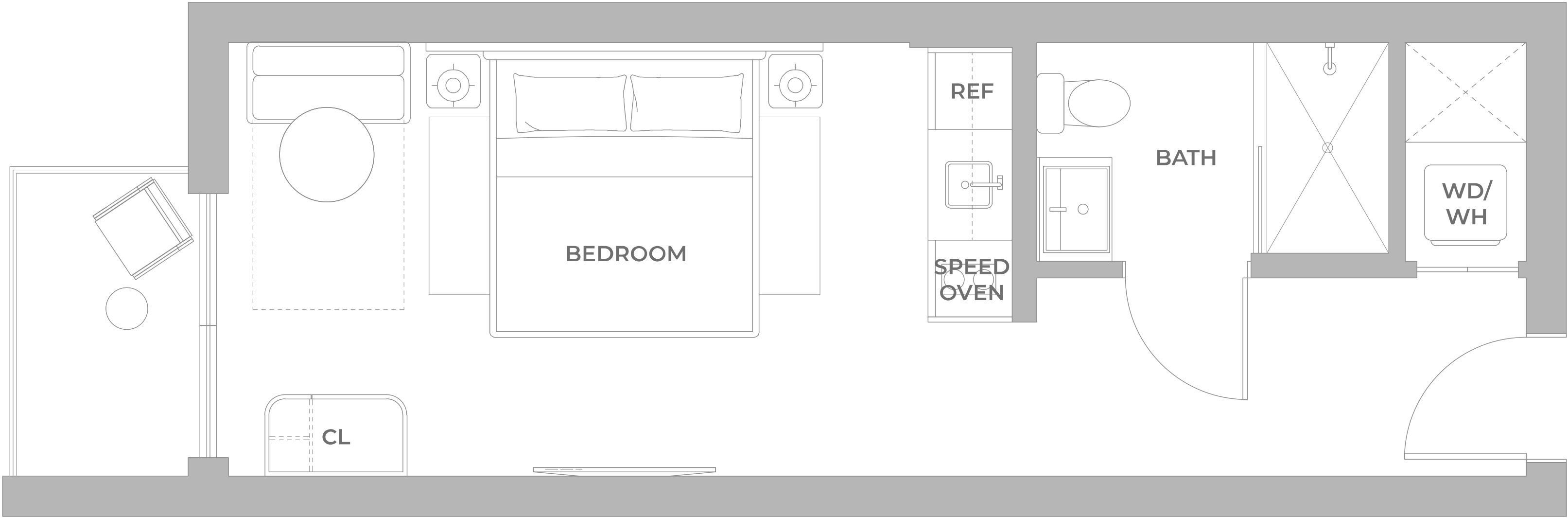
DOMUS FLATS — BRICKELL CENTER

INTERIOR

393 sf | 36.51 m²

EXTERIOR

29.3 sf | 2.72 m²



© ORAL REPRESENTATIONS CANNOT BE RELIED UPON AS CORRECTLY STATING THE REPRESENTATIONS OF THE DEVELOPER. FOR CORRECT REPRESENTATIONS, MAKE REFERENCE TO THIS BROCHURE AND TO THE DOCUMENTS REQUIRED BY SECTION 718.503, FLORIDA STATUTES, TO BE FURNISHED BY A DEVELOPER TO A BUYER OR LESSEE. Stated square footages and dimensions of residences are measured to the exterior boundaries of the exterior walls and the centerline of interior demising walls between units and in fact vary from the square footages and dimensions that would be determined by using the description and definition of the “Unit” set forth in the Declaration of Condominium, which generally only includes the interior airspace between the perimeter walls and excludes all interior structural components and other common elements. The method of measurement used in these materials is generally used in sales materials and is provided to allow a prospective buyer to compare the Units with units in other projects that utilize the same method. Refer to Exhibit “2” to the Declaration of Condominium for the unit dimensions calculated based on the description and definition of the “Unit” set forth in the Declaration. Terraces are not part of the Unit. Measurements of rooms set forth on this floorplan are generally taken at the farthest points of each given room (as described above and as if the room were a perfect rectangle), without regard for any cutouts or variations. Accordingly, the interior air space dimensions of the actual room will typically be smaller than the product obtained by multiplying the stated length and width. All measurements are estimates based on preliminary plans and will vary with actual construction. All floor plans, specifications and other development plans are proposed and conceptual only, and are subject to change and will not necessarily accurately reflect the final plans and specifications.

# LINE 03

LEVELS 8, 9, 15, 16, 21, 22, 27, 28, 33-35

KING E  
STUDIO – 1 BATHROOM

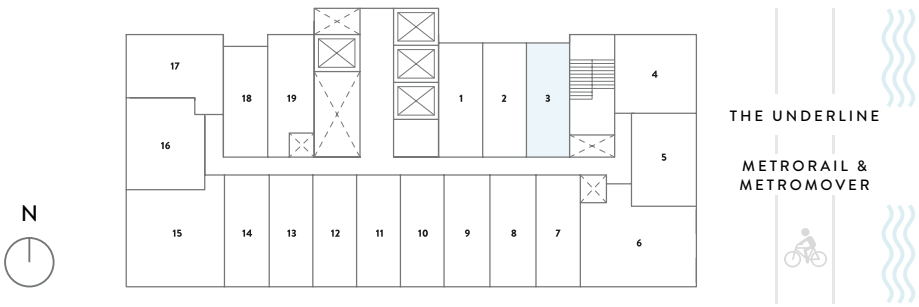
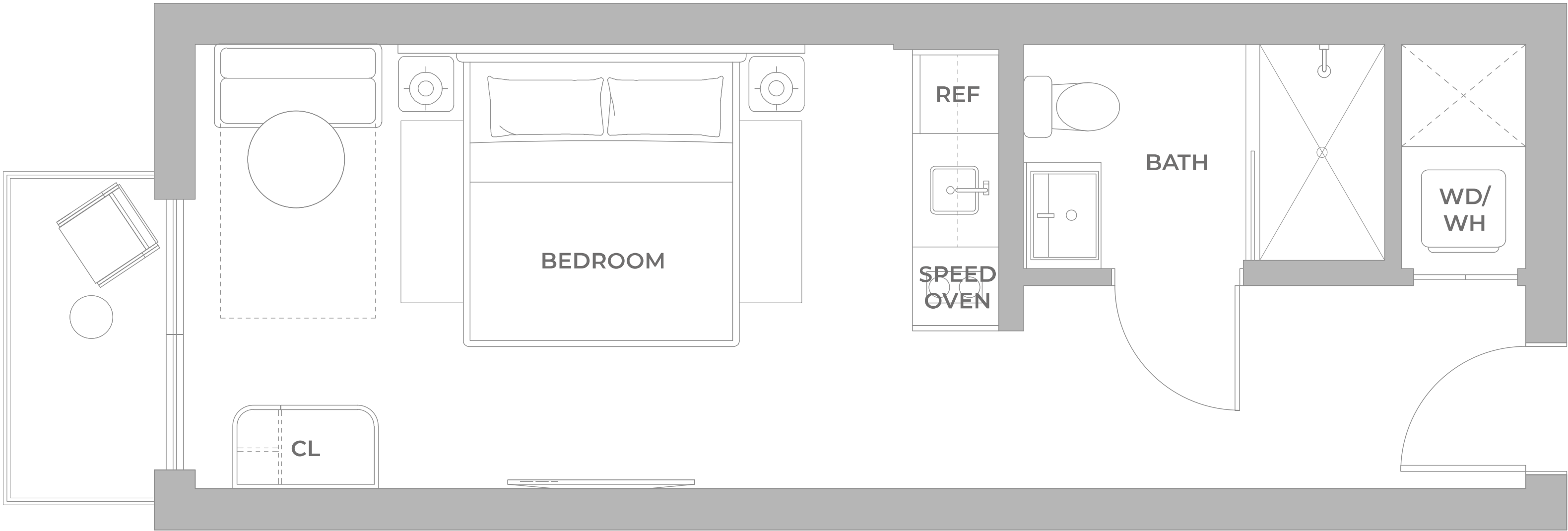
DOMUS FLATS — BRICKELL CENTER

INTERIOR

393 sf | 36.51 m²

EXTERIOR

26.7 sf | 2.48 m²



© ORAL REPRESENTATIONS CANNOT BE RELIED UPON AS CORRECTLY STATING THE REPRESENTATIONS OF THE DEVELOPER. FOR CORRECT REPRESENTATIONS, MAKE REFERENCE TO THIS BROCHURE AND TO THE DOCUMENTS REQUIRED BY SECTION 718.503, FLORIDA STATUTES, TO BE FURNISHED BY A DEVELOPER TO A BUYER OR LESSEE. Stated square footages and dimensions of residences are measured to the exterior boundaries of the exterior walls and the centerline of interior demising walls between units and in fact vary from the square footages and dimensions that would be determined by using the description and definition of the “Unit” set forth in the Declaration of Condominium, which generally only includes the interior airspace between the perimeter walls and excludes all interior structural components and other common elements. The method of measurement used in these materials is generally used in sales materials and is provided to allow a prospective buyer to compare the Units with units in other projects that utilize the same method. Refer to Exhibit “2” to the Declaration of Condominium for the unit dimensions calculated based on the description and definition of the “Unit” set forth in the Declaration. Terraces are not part of the Unit. Measurements of rooms set forth on this floorplan are generally taken at the farthest points of each given room (as described above and as if the room were a perfect rectangle), without regard for any cutouts or variations. Accordingly, the interior air space dimensions of the actual room will typically be smaller than the product obtained by multiplying the stated length and width. All measurements are estimates based on preliminary plans and will vary with actual construction. All floor plans, specifications and other development plans are proposed and conceptual only, and are subject to change and will not necessarily accurately reflect the final plans and specifications.

# LINE 04

LEVEL 4

1 BR SUITE A - ADA/FL

1 BEDROOM – 1 BATHROOM

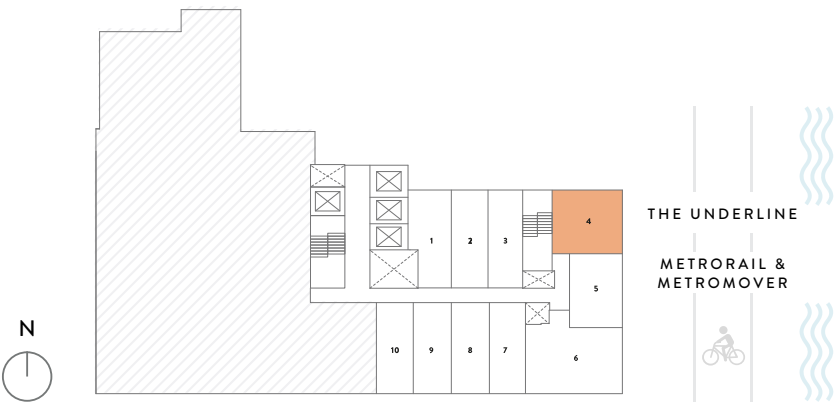
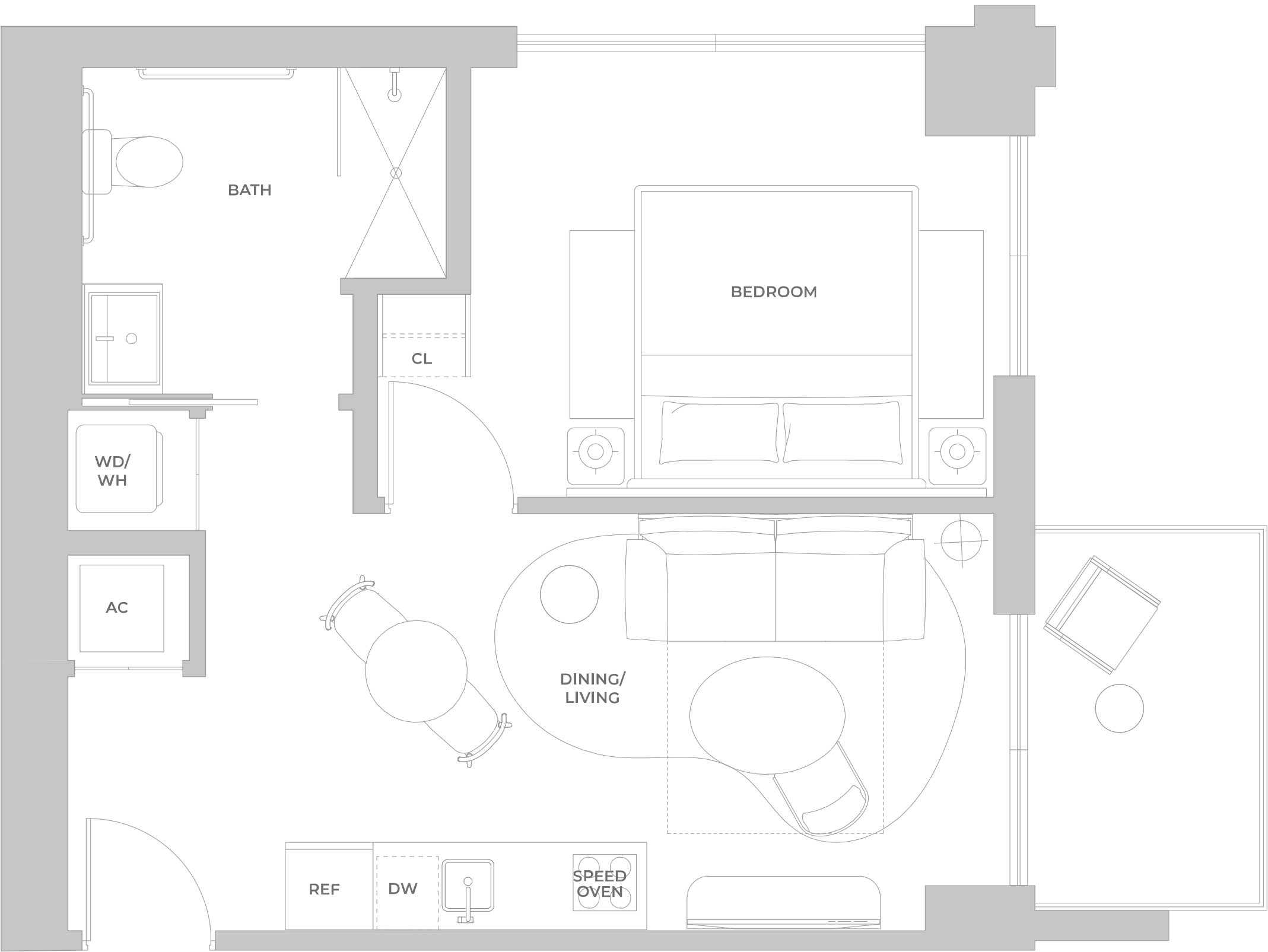
DOMUS FLATS — BRICKELL CENTER

INTERIOR

517 sf | 48.03 m²

EXTERIOR

52.5 sf | 4.87 m²



© ORAL REPRESENTATIONS CANNOT BE RELIED UPON AS CORRECTLY STATING THE REPRESENTATIONS OF THE DEVELOPER. FOR CORRECT REPRESENTATIONS, MAKE REFERENCE TO THIS BROCHURE AND TO THE DOCUMENTS REQUIRED BY SECTION 718.503, FLORIDA STATUTES, TO BE FURNISHED BY A DEVELOPER TO A BUYER OR LESSEE. Stated square footages and dimensions of residences are measured to the exterior boundaries of the exterior walls and the centerline of interior demising walls between units and in fact vary from the square footages and dimensions that would be determined by using the description and definition of the “Unit” set forth in the Declaration of Condominium, which generally only includes the interior airspace between the perimeter walls and excludes all interior structural components and other common elements. The method of measurement used in these materials is generally used in sales materials and is provided to allow a prospective buyer to compare the Units with units in other projects that utilize the same method. Refer to Exhibit “2” to the Declaration of Condominium for the unit dimensions calculated based on the description and definition of the “Unit” set forth in the Declaration. Terraces are not part of the Unit. Measurements of rooms set forth on this floorplan are generally taken at the farthest points of each given room (as described above and as if the room were a perfect rectangle), without regard for any cutouts or variations. Accordingly, the interior air space dimensions of the actual room will typically be smaller than the product obtained by multiplying the stated length and width. All measurements are estimates based on preliminary plans and will vary with actual construction. All floor plans, specifications and other development plans are proposed and conceptual only, and are subject to change and will not necessarily accurately reflect the final plans and specifications.

# LINE 04

LEVELS 9, 16, 22, 28

1 BR SUITE A - ADA

1 BEDROOM – 1 BATHROOM

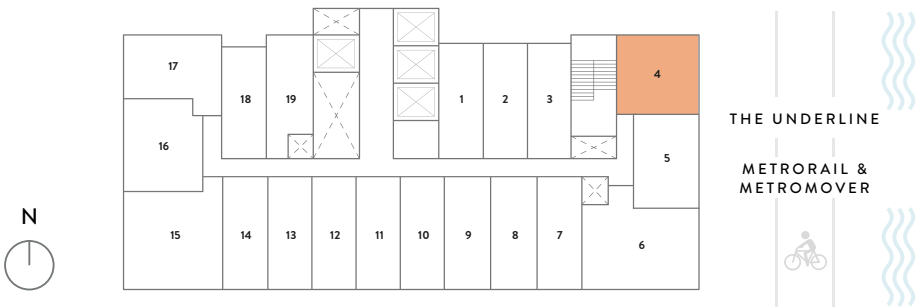
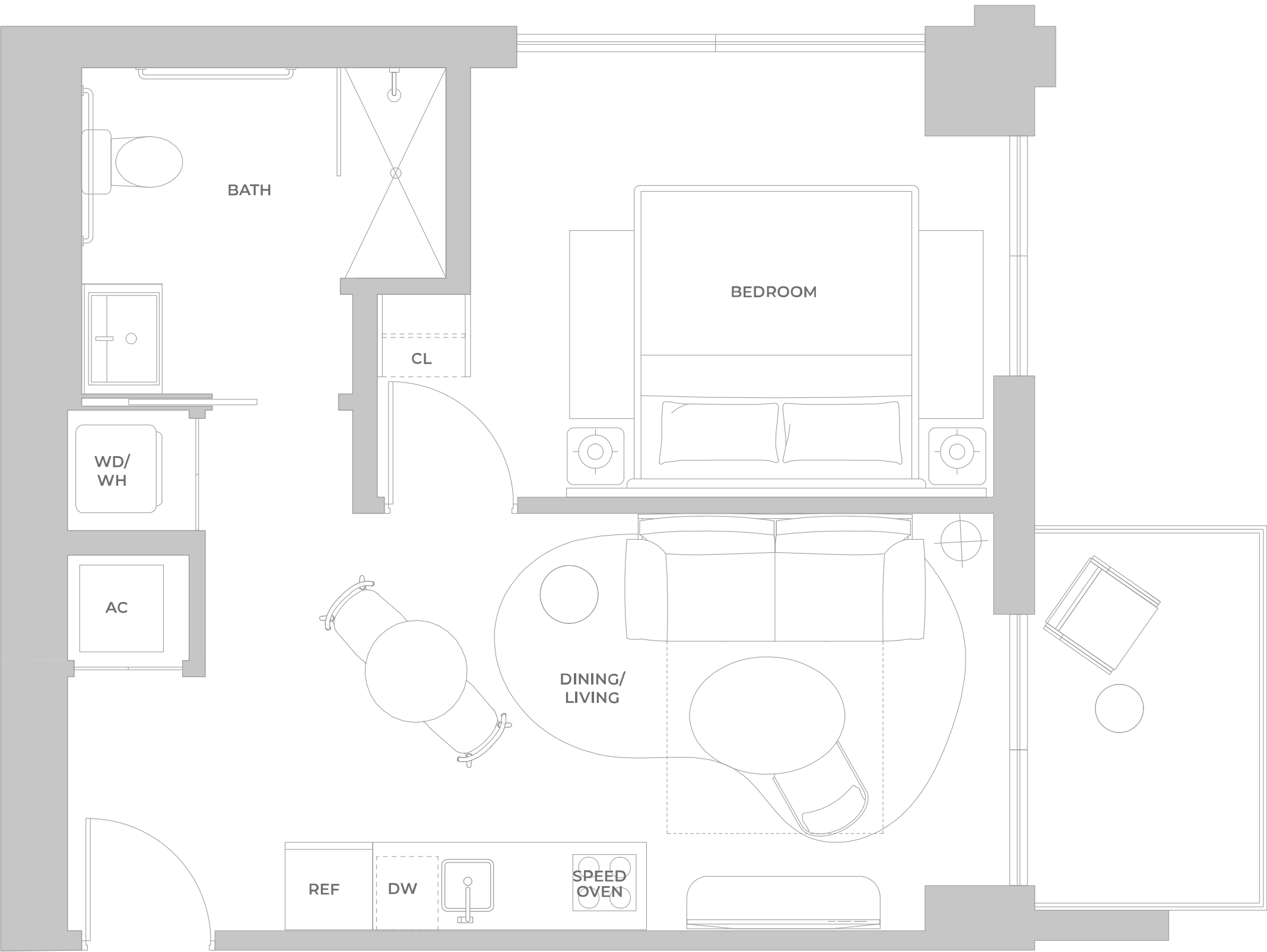
DOMUS FLATS — BRICKELL CENTER

INTERIOR

517 sf | 48.03 m²

EXTERIOR

52.5 sf | 4.87 m²



© ORAL REPRESENTATIONS CANNOT BE RELIED UPON AS CORRECTLY STATING THE REPRESENTATIONS OF THE DEVELOPER. FOR CORRECT REPRESENTATIONS, MAKE REFERENCE TO THIS BROCHURE AND TO THE DOCUMENTS REQUIRED BY SECTION 718.503, FLORIDA STATUTES, TO BE FURNISHED BY A DEVELOPER TO A BUYER OR LESSEE. Stated square footages and dimensions of residences are measured to the exterior boundaries of the exterior walls and the centerline of interior demising walls between units and in fact vary from the square footages and dimensions that would be determined by using the description and definition of the “Unit” set forth in the Declaration of Condominium, which generally only includes the interior airspace between the perimeter walls and excludes all interior structural components and other common elements. The method of measurement used in these materials is generally used in sales materials and is provided to allow a prospective buyer to compare the Units with units in other projects that utilize the same method. Refer to Exhibit “2” to the Declaration of Condominium for the unit dimensions calculated based on the description and definition of the “Unit” set forth in the Declaration. Terraces are not part of the Unit. Measurements of rooms set forth on this floorplan are generally taken at the farthest points of each given room (as described above and as if the room were a perfect rectangle), without regard for any cutouts or variations. Accordingly, the interior air space dimensions of the actual room will typically be smaller than the product obtained by multiplying the stated length and width. All measurements are estimates based on preliminary plans and will vary with actual construction. All floor plans, specifications and other development plans are proposed and conceptual only, and are subject to change and will not necessarily accurately reflect the final plans and specifications.

# LINE 04

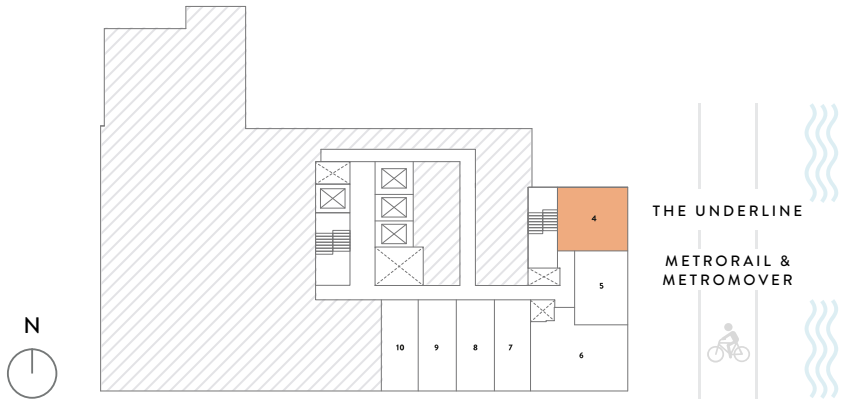
LEVEL 2

1 BR SUITE A  
1 BEDROOM — 1 BATHROOM

DOMUS FLATS — BRICKELL CENTER

INTERIOR

519 sf | 48.21 m²



© ORAL REPRESENTATIONS CANNOT BE RELIED UPON AS CORRECTLY STATING THE REPRESENTATIONS OF THE DEVELOPER. FOR CORRECT REPRESENTATIONS, MAKE REFERENCE TO THIS BROCHURE AND TO THE DOCUMENTS REQUIRED BY SECTION 718.503, FLORIDA STATUTES, TO BE FURNISHED BY A DEVELOPER TO A BUYER OR LESSEE. Stated square footages and dimensions of residences are measured to the exterior boundaries of the exterior walls and the centerline of interior demising walls between units and in fact vary from the square footages and dimensions that would be determined by using the description and definition of the “Unit” set forth in the Declaration of Condominium, which generally only includes the interior airspace between the perimeter walls and excludes all interior structural components and other common elements. The method of measurement used in these materials is generally used in sales materials and is provided to allow a prospective buyer to compare the Units with units in other projects that utilize the same method. Refer to Exhibit “2” to the Declaration of Condominium for the unit dimensions calculated based on the description and definition of the “Unit” set forth in the Declaration. Terraces are not part of the Unit. Measurements of rooms set forth on this floorplan are generally taken at the farthest points of each given room (as described above and as if the room were a perfect rectangle), without regard for any cutouts or variations. Accordingly, the interior air space dimensions of the actual room will typically be smaller than the product obtained by multiplying the stated length and width. All measurements are estimates based on preliminary plans and will vary with actual construction. All floor plans, specifications and other development plans are proposed and conceptual only, and are subject to change and will not necessarily accurately reflect the final plans and specifications.



DOMUS FLATS — BRICKELL CENTER

LINE 04

LEVEL 3

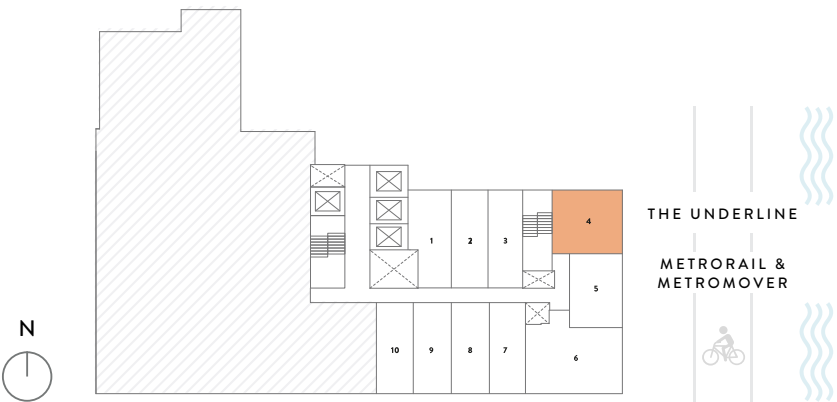
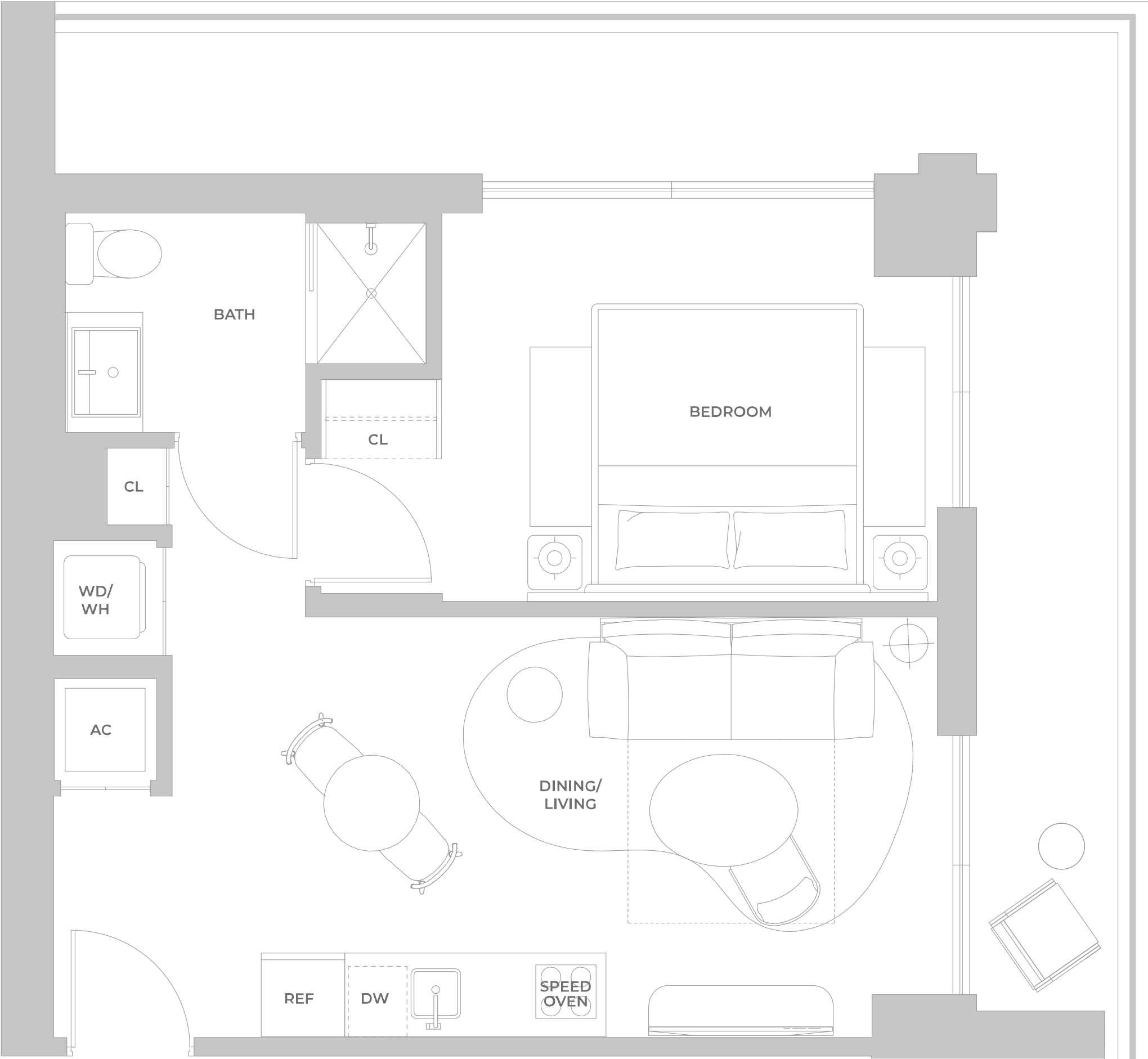
1 BR SUITE A  
1 BEDROOM — 1 BATHROOM

INTERIOR

517 sf | 48.03 m²

EXTERIOR

214.4 sf | 19.9 m²



© ORAL REPRESENTATIONS CANNOT BE RELIED UPON AS CORRECTLY STATING THE REPRESENTATIONS OF THE DEVELOPER. FOR CORRECT REPRESENTATIONS, MAKE REFERENCE TO THIS BROCHURE AND TO THE DOCUMENTS REQUIRED BY SECTION 718.503, FLORIDA STATUTES, TO BE FURNISHED BY A DEVELOPER TO A BUYER OR LESSEE. Stated square footages and dimensions of residences are measured to the exterior boundaries of the exterior walls and the centerline of interior demising walls between units and in fact vary from the square footages and dimensions that would be determined by using the description and definition of the "Unit" set forth in the Declaration of Condominium, which generally only includes the interior airspace between the perimeter walls and excludes all interior structural components and other common elements. The method of measurement used in these materials is generally used in sales materials and is provided to allow a prospective buyer to compare the Units with units in other projects that utilize the same method. Refer to Exhibit "2" to the Declaration of Condominium for the unit dimensions calculated based on the description and definition of the "Unit" set forth in the Declaration. Terraces are not part of the Unit. Measurements of rooms set forth on this floorplan are generally taken at the farthest points of each given room (as described above and as if the room were a perfect rectangle), without regard for any cutouts or variations. Accordingly, the interior air space dimensions of the actual room will typically be smaller than the product obtained by multiplying the stated length and width. All measurements are estimates based on preliminary plans and will vary with actual construction. All floor plans, specifications and other development plans are proposed and conceptual only, and are subject to change and will not necessarily accurately reflect the final plans and specifications.

# LINE 04

LEVELS 5, 10, 17, 23, 29

1 BR SUITE A  
1 BEDROOM – 1 BATHROOM

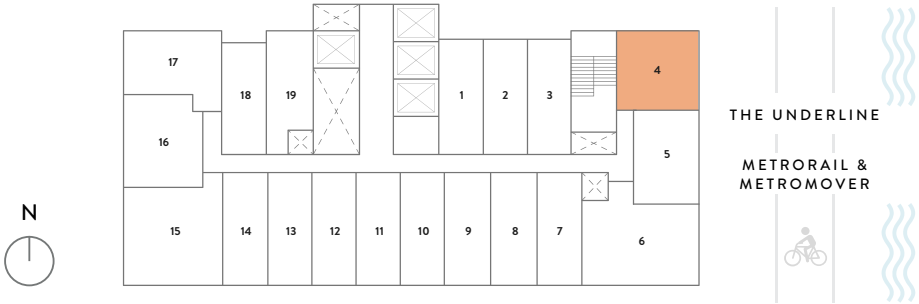
DOMUS FLATS — BRICKELL CENTER

INTERIOR

517 sf | 48.03 m²

EXTERIOR

39.6 sf | 3.68 m²



© ORAL REPRESENTATIONS CANNOT BE RELIED UPON AS CORRECTLY STATING THE REPRESENTATIONS OF THE DEVELOPER. FOR CORRECT REPRESENTATIONS, MAKE REFERENCE TO THIS BROCHURE AND TO THE DOCUMENTS REQUIRED BY SECTION 718.503, FLORIDA STATUTES, TO BE FURNISHED BY A DEVELOPER TO A BUYER OR LESSEE. Stated square footages and dimensions of residences are measured to the exterior boundaries of the exterior walls and the centerline of interior demising walls between units and in fact vary from the square footages and dimensions that would be determined by using the description and definition of the “Unit” set forth in the Declaration of Condominium, which generally only includes the interior airspace between the perimeter walls and excludes all interior structural components and other common elements. The method of measurement used in these materials is generally used in sales materials and is provided to allow a prospective buyer to compare the Units with units in other projects that utilize the same method. Refer to Exhibit “2” to the Declaration of Condominium for the unit dimensions calculated based on the description and definition of the “Unit” set forth in the Declaration. Terraces are not part of the Unit. Measurements of rooms set forth on this floorplan are generally taken at the farthest points of each given room (as described above and as if the room were a perfect rectangle), without regard for any cutouts or variations. Accordingly, the interior air space dimensions of the actual room will typically be smaller than the product obtained by multiplying the stated length and width. All measurements are estimates based on preliminary plans and will vary with actual construction. All floor plans, specifications and other development plans are proposed and conceptual only, and are subject to change and will not necessarily accurately reflect the final plans and specifications.

# LINE 04

LEVELS 6, 11, 12, 18, 19, 24, 25, 30, 31

1 BR SUITE A  
1 BEDROOM – 1 BATHROOM

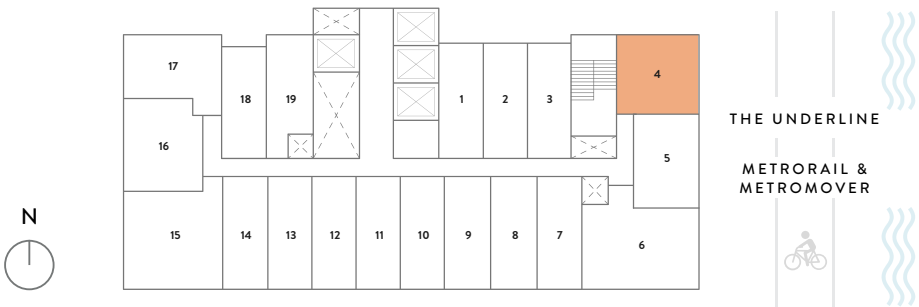
DOMUS FLATS — BRICKELL CENTER

INTERIOR

517 sf | 48.03 m²

EXTERIOR

32.9 sf | 3.1 m²



© ORAL REPRESENTATIONS CANNOT BE RELIED UPON AS CORRECTLY STATING THE REPRESENTATIONS OF THE DEVELOPER. FOR CORRECT REPRESENTATIONS, MAKE REFERENCE TO THIS BROCHURE AND TO THE DOCUMENTS REQUIRED BY SECTION 718.503, FLORIDA STATUTES, TO BE FURNISHED BY A DEVELOPER TO A BUYER OR LESSEE. Stated square footages and dimensions of residences are measured to the exterior boundaries of the exterior walls and the centerline of interior demising walls between units and in fact vary from the square footages and dimensions that would be determined by using the description and definition of the “Unit” set forth in the Declaration of Condominium, which generally only includes the interior airspace between the perimeter walls and excludes all interior structural components and other common elements. The method of measurement used in these materials is generally used in sales materials and is provided to allow a prospective buyer to compare the Units with units in other projects that utilize the same method. Refer to Exhibit “2” to the Declaration of Condominium for the unit dimensions calculated based on the description and definition of the “Unit” set forth in the Declaration. Terraces are not part of the Unit. Measurements of rooms set forth on this floorplan are generally taken at the farthest points of each given room (as described above and as if the room were a perfect rectangle), without regard for any cutouts or variations. Accordingly, the interior air space dimensions of the actual room will typically be smaller than the product obtained by multiplying the stated length and width. All measurements are estimates based on preliminary plans and will vary with actual construction. All floor plans, specifications and other development plans are proposed and conceptual only, and are subject to change and will not necessarily accurately reflect the final plans and specifications.

# LINE 04

LEVELS 7, 14, 20, 26, 32

1 BR SUITE A  
1 BEDROOM – 1 BATHROOM

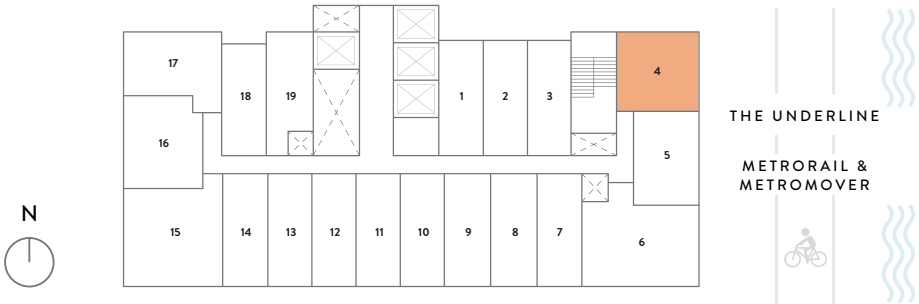
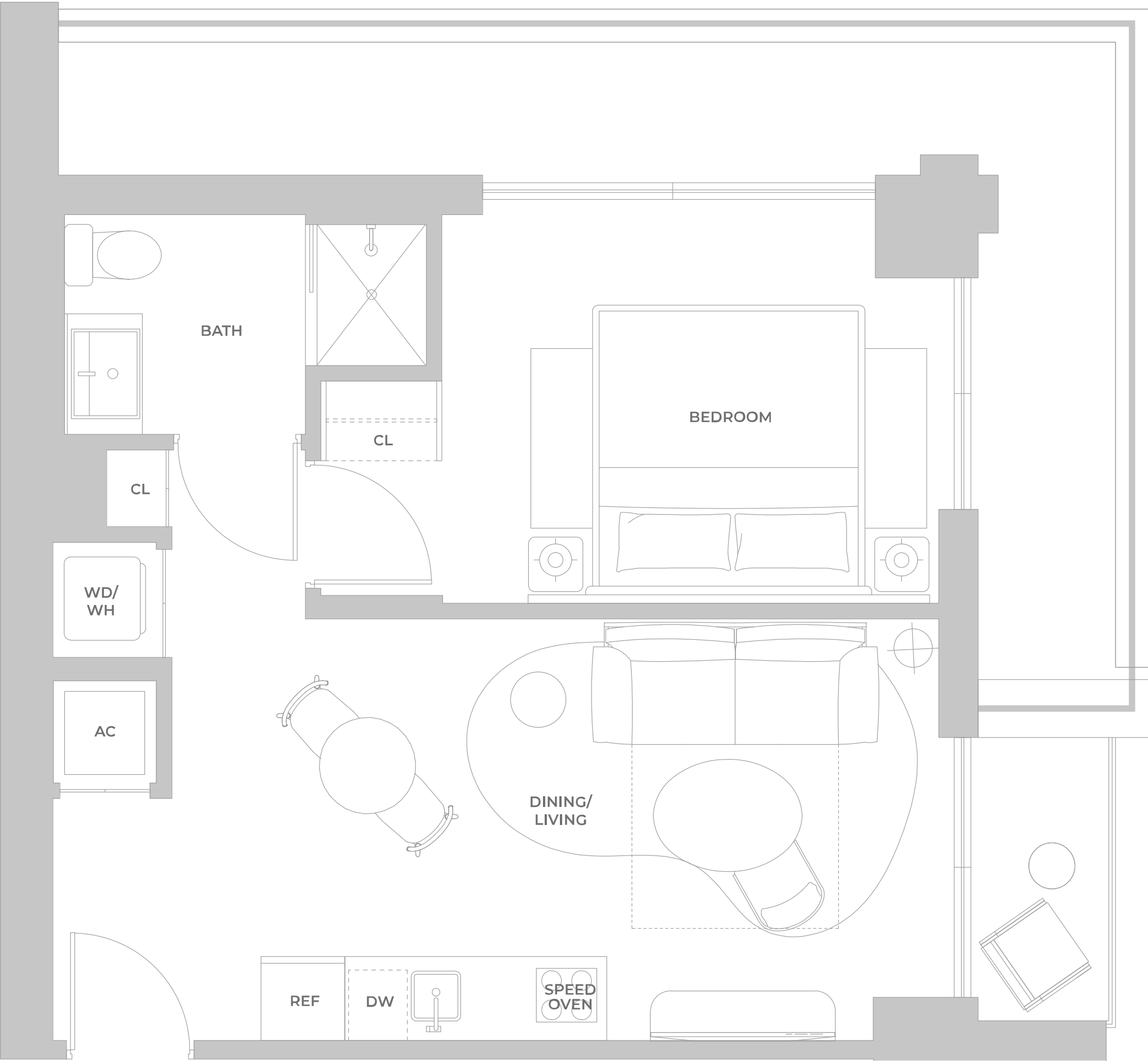
DOMUS FLATS — BRICKELL CENTER

INTERIOR

517 sf | 48.03 m²

EXTERIOR

207.6 sf | 19.28 m²



® ORAL REPRESENTATIONS CANNOT BE RELIED UPON AS CORRECTLY STATING THE REPRESENTATIONS OF THE DEVELOPER. FOR CORRECT REPRESENTATIONS, MAKE REFERENCE TO THIS BROCHURE AND TO THE DOCUMENTS REQUIRED BY SECTION 718.503, FLORIDA STATUTES, TO BE FURNISHED BY A DEVELOPER TO A BUYER OR LESSEE. Stated square footages and dimensions of residences are measured to the exterior boundaries of the exterior walls and the centerline of interior demising walls between units and in fact vary from the square footages and dimensions that would be determined by using the description and definition of the “Unit” set forth in the Declaration of Condominium, which generally only includes the interior airspace between the perimeter walls and excludes all interior structural components and other common elements. The method of measurement used in these materials is generally used in sales materials and is provided to allow a prospective buyer to compare the Units with units in other projects that utilize the same method. Refer to Exhibit “2” to the Declaration of Condominium for the unit dimensions calculated based on the description and definition of the “Unit” set forth in the Declaration. Terraces are not part of the Unit. Measurements of rooms set forth on this floorplan are generally taken at the farthest points of each given room (as described above and as if the room were a perfect rectangle), without regard for any cutouts or variations. Accordingly, the interior air space dimensions of the actual room will typically be smaller than the product obtained by multiplying the stated length and width. All measurements are estimates based on preliminary plans and will vary with actual construction. All floor plans, specifications and other development plans are proposed and conceptual only, and are subject to change and will not necessarily accurately reflect the final plans and specifications.