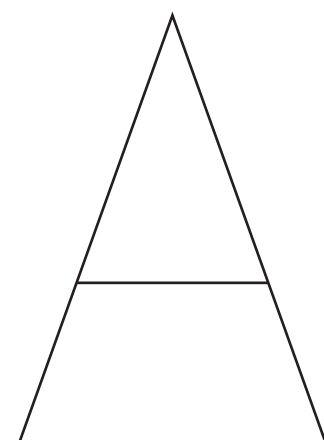


RESIDENCE



LEVEL ONE

1284 ft² / 119 m²
1 Bedroom
1 Bathroom

ALL LEVELS

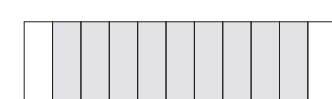
4 Bedrooms
4.5 Bathrooms

Indoor
4403 ft² / 409 m²

Outdoor
1052 ft² / 97 m²

Total
5455 ft² / 506 m²

CENTRAL UNITS



BOTTOM FLOOR



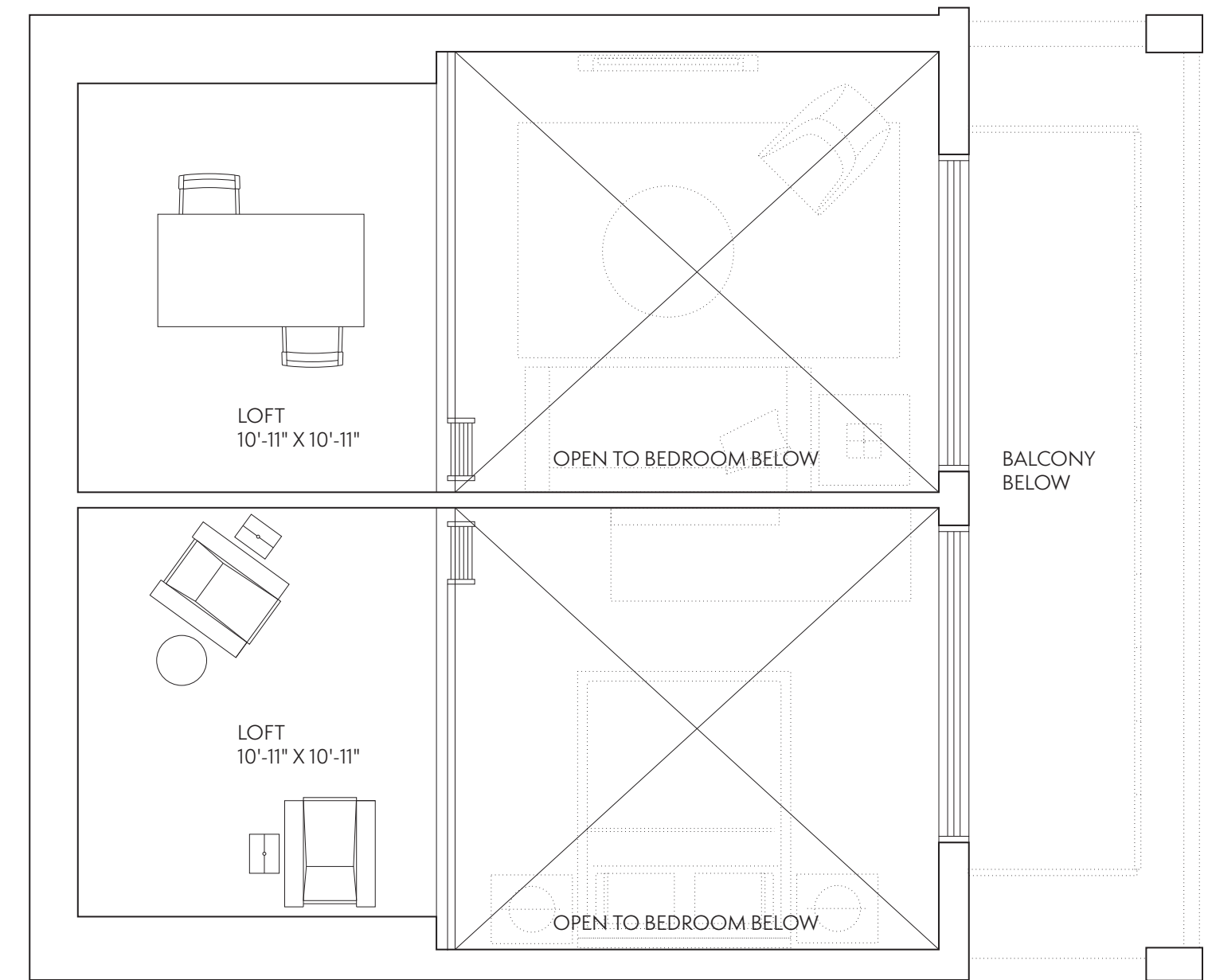
1/4" = 1'



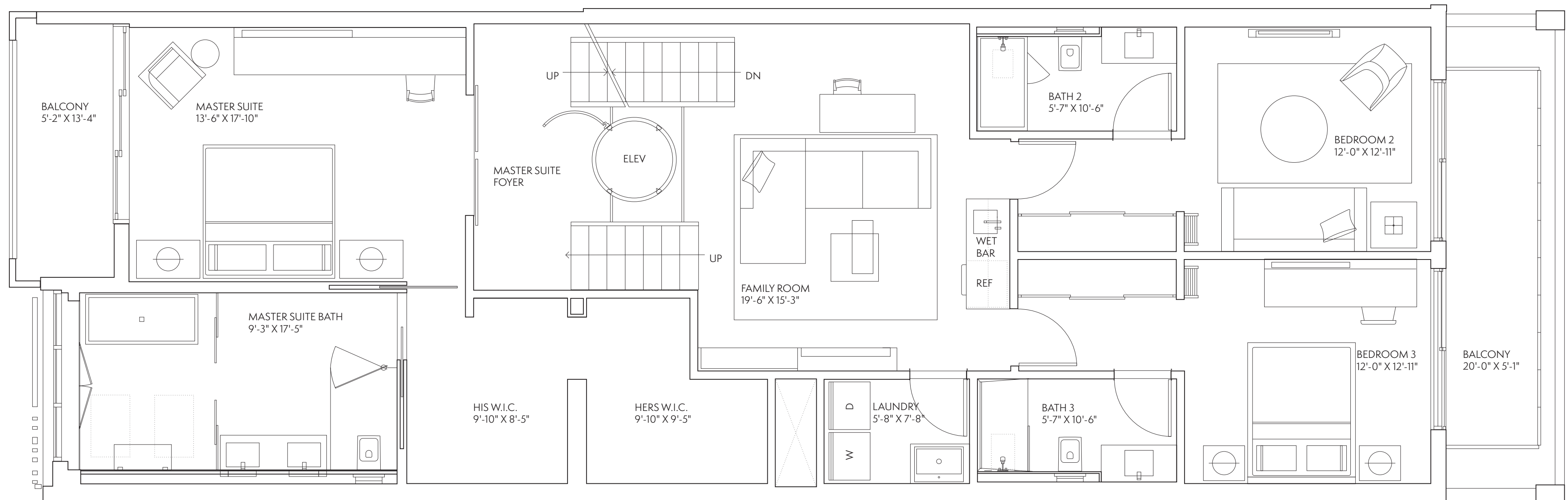
ORAL REPRESENTATIONS CANNOT BE RELIED UPON AS CORRECTLY STATING THE REPRESENTATION OF THE DEVELOPER. FOR CORRECT REPRESENTATIONS, MAKE REFERENCE TO THE DOCUMENTS REQUIRED BY SECTION 718.503, FLORIDA STATUTES. TO BE FURNISHED BY THE DEVELOPER TO A BUYER OR LESSEE. PRICES, PLANS AND SPECIFICATIONS ARE SUBJECT TO CHANGE WITHOUT NOTICE. THIS IS NOT INTENDED TO BE AN OFFER TO SELL NOR A SOLICITATION OF OFFERS TO BUY A UNIT WHERE SUCH OFFERS OR SOLICITATIONS ARE PROHIBITED BY LAW. ADDITIONAL RESTRICTIONS MAY APPLY.

THE DEVELOPER RESERVES THE RIGHT TO MODIFY ANY OF THE PLANS FOR THE DEVELOPMENT DESCRIBED OR DEPICTED HEREIN AT ANY TIME IN THE DEVELOPER'S SOLE DISCRETION AND WITHOUT NOTICE. THESE MATERIALS AND THE FEATURES AND AMENITIES DESCRIBED AND DEPICTED HEREIN ARE ARTIST'S CONCEPTUAL RENDERINGS BASED UPON CURRENT DEVELOPMENT PLANS WHICH ARE SUBJECT TO CHANGE WITHOUT NOTICE. NO GUARANTEES OR REPRESENTATIONS WHATSOEVER ARE MADE THAT THE FEATURES, AMENITIES AND FACILITIES, AND EXISTING OR FUTURE VIEWS OF THE PROJECT AND SURROUNDING AREAS, DEPICTED BY ANY SUCH ARTIST'S RENDERINGS OR OTHERWISE DESCRIBED HEREIN, WILL BE PROVIDED, OR, IF PROVIDED, WILL BE OF THE SAME TYPE, SIZE, LOCATION OR NATURE AS DEPICTED OR DESCRIBED HEREIN.

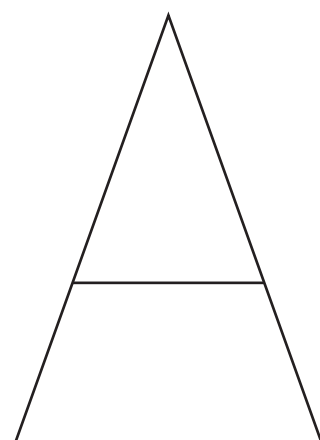
ALL DIMENSIONS ARE APPROXIMATE AND ALL FLOOR PLANS AND DEVELOPMENT PLANS ARE SUBJECT TO CHANGE. THE FLOOR PLAN DEPICTED HEREIN IS A TYPICAL FLOOR PLAN FOR THE RESIDENCE TYPE INDICATED AND IS PROVIDED FOR INFORMATIONAL PURPOSES ONLY. THE ACTUAL FLOOR PLAN OF THE RESIDENCES MAY DIFFER. ALL FEATURES LISTED FOR THE RESIDENCES ARE REPRESENTATIVE ONLY AND THE DEVELOPER RESERVES THE RIGHT, WITHOUT NOTICE TO OR APPROVAL BY THE BUYER, TO MAKE CHANGES OR SUBSTITUTIONS OF EQUAL OR BETTER QUALITY FOR ANY FEATURES, MATERIALS AND EQUIPMENT.



15TH STREET



RESIDENCE



LEVEL TWO

3 Bedrooms
3 Bathrooms
1930 ft² / 179 m²

ATTIC SPACE
283 ft² / 26 m²

ALL LEVELS

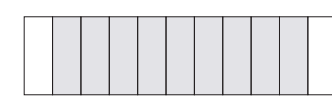
4 Bedrooms
4.5 Bathrooms

Indoor
4403 ft² / 409 m²

Outdoor
1052 ft² / 97 m²

Total
5455 ft² / 506 m²

CENTRAL UNITS



MIDDLE FLOOR



1/4" = 1'

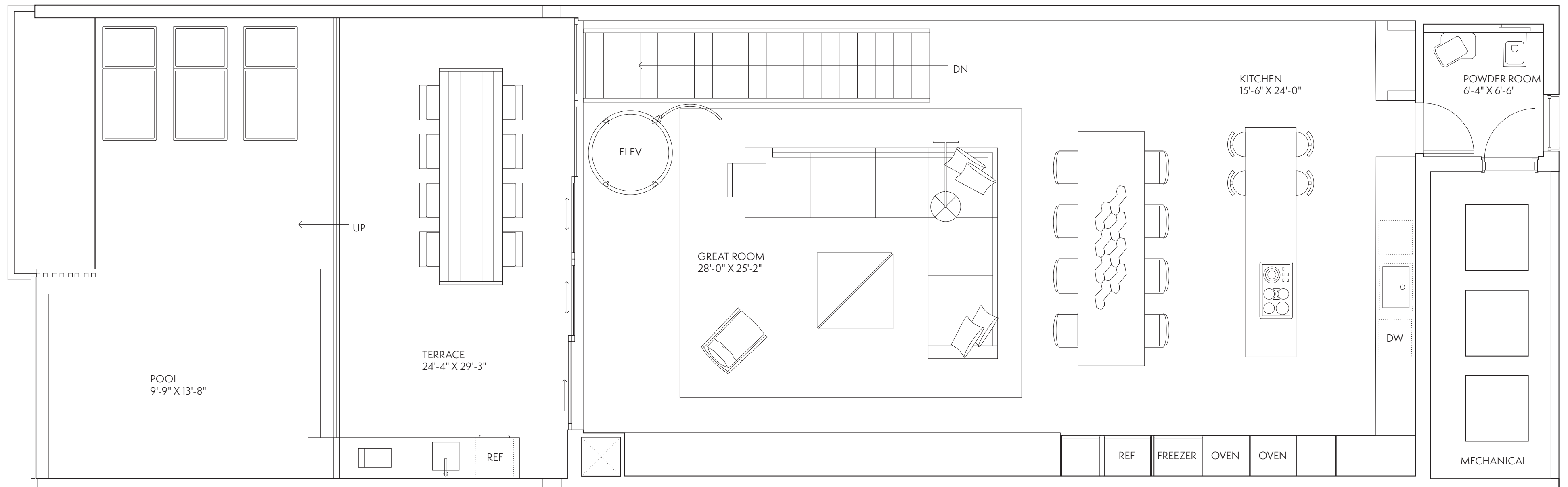


ORAL REPRESENTATIONS CANNOT BE RELIED UPON AS CORRECTLY STATING THE REPRESENTATION OF THE DEVELOPER. FOR CORRECT REPRESENTATIONS, MAKE REFERENCE TO THE DOCUMENTS REQUIRED BY SECTION 718.503, FLORIDA STATUTES, TO BE FURNISHED BY THE DEVELOPER TO A BUYER OR LESSEE. PRICES, PLANS AND SPECIFICATIONS ARE SUBJECT TO CHANGE WITHOUT NOTICE. THIS IS NOT INTENDED TO BE AN OFFER TO SELL NOR A SOLICITATION OF OFFERS TO BUY A UNIT WHERE SUCH OFFERS OR SOLICITATIONS ARE PROHIBITED BY LAW. ADDITIONAL RESTRICTIONS MAY APPLY.

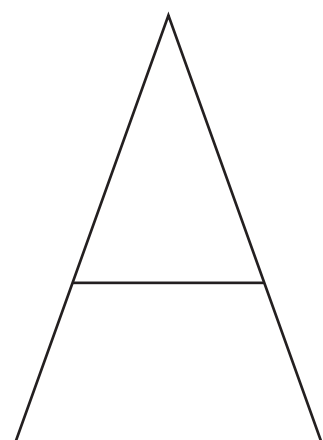
THE DEVELOPER RESERVES THE RIGHT TO MODIFY ANY OF THE PLANS FOR THE DEVELOPMENT DESCRIBED OR DEPICTED HEREIN AT ANY TIME IN THE DEVELOPER'S SOLE DISCRETION AND WITHOUT NOTICE. THESE MATERIALS AND THE FEATURES AND AMENITIES DESCRIBED AND DEPICTED HEREIN ARE ARTIST'S CONCEPTUAL RENDERINGS BASED UPON CURRENT DEVELOPMENT PLANS WHICH ARE SUBJECT TO CHANGE WITHOUT NOTICE. NO GUARANTEES OR REPRESENTATIONS WHATSOEVER ARE MADE THAT THE FEATURES, AMENITIES AND FACILITIES, AND EXISTING OR FUTURE VIEWS OF THE PROJECT AND SURROUNDING AREAS, DEPICTED BY ANY SUCH ARTIST'S RENDERINGS OR OTHERWISE DESCRIBED HEREIN, WILL BE PROVIDED, OR, IF PROVIDED, WILL BE OF THE SAME TYPE, SIZE, LOCATION OR NATURE AS DEPICTED OR DESCRIBED HEREIN.

ALL DIMENSIONS ARE APPROXIMATE AND ALL FLOOR PLANS AND DEVELOPMENT PLANS ARE SUBJECT TO CHANGE. THE FLOOR PLAN DEPICTED HEREIN IS A TYPICAL FLOOR PLAN FOR THE RESIDENCE TYPE INDICATED AND IS PROVIDED FOR INFORMATIONAL PURPOSES ONLY. THE ACTUAL FLOOR PLAN OF THE RESIDENCES WILL VARY. ALL FEATURES LISTED FOR THE RESIDENCES ARE REPRESENTATIVE ONLY AND THE DEVELOPER RESERVES THE RIGHT, WITHOUT NOTICE TO OR APPROVAL BY THE BUYER, TO MAKE CHANGES OR SUBSTITUTIONS OF EQUAL OR BETTER QUALITY FOR ANY FEATURES, MATERIALS AND EQUIPMENT.

15TH STREET



RESIDENCE



LEVEL THREE

.5 Bathroom
1958 ft² / 181 m²

ALL LEVELS

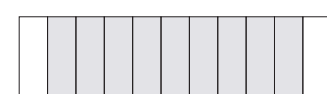
4 Bedrooms
4.5 Bathrooms

Indoor
4403 ft² / 409 m²

Outdoor
1052 ft² / 97 m²

Total
5455 ft² / 506 m²

CENTRAL UNITS



TOP FLOOR



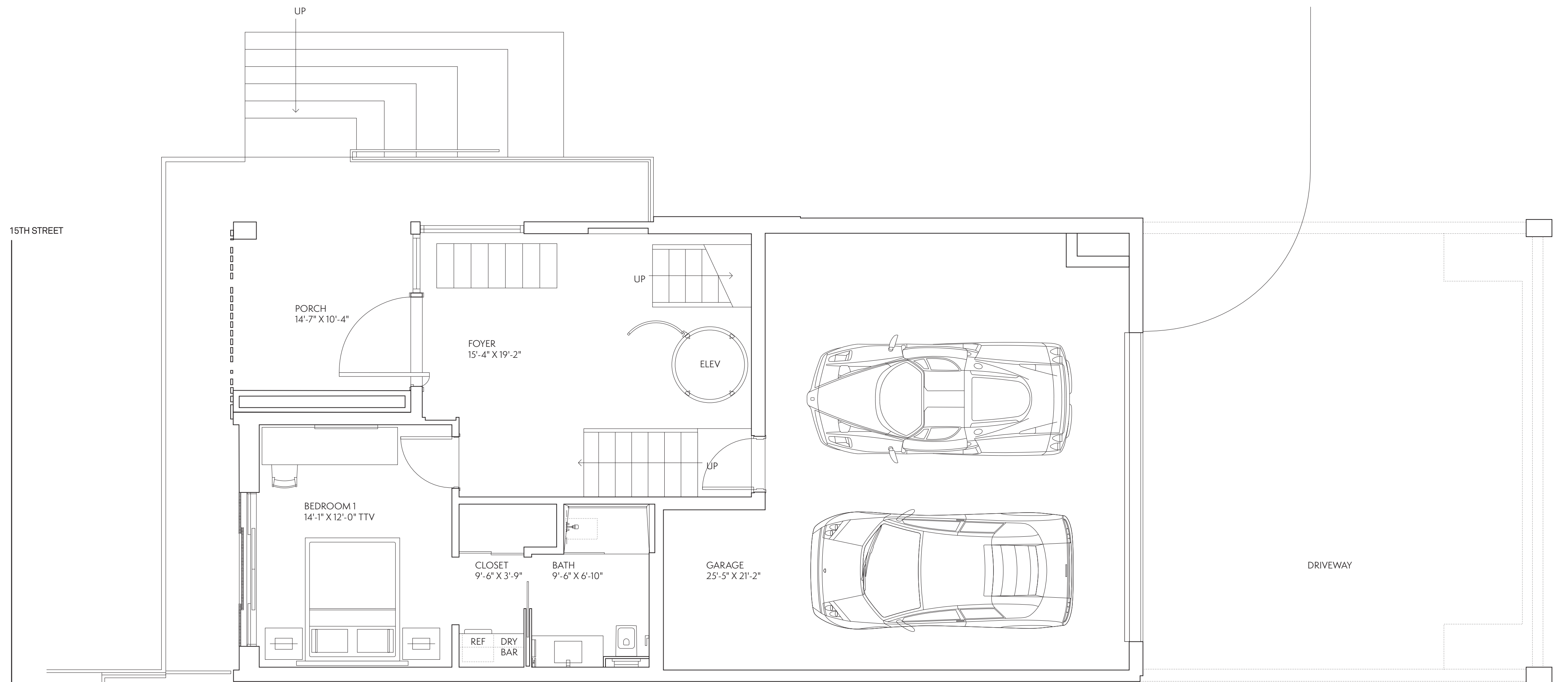
1/4" = 1'



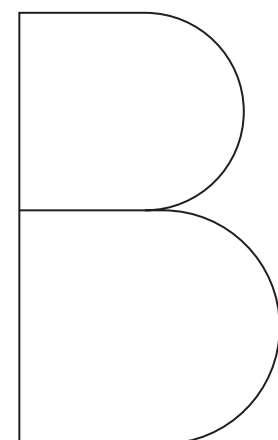
ORAL REPRESENTATIONS CANNOT BE RELIED UPON AS CORRECTLY STATING THE REPRESENTATION OF THE DEVELOPER. FOR CORRECT REPRESENTATIONS, MAKE REFERENCE TO THE DOCUMENTS REQUIRED BY SECTION 718.503, FLORIDA STATUTES, TO BE FURNISHED BY THE DEVELOPER TO A BUYER OR LESSEE. PRICES, PLANS AND SPECIFICATIONS ARE SUBJECT TO CHANGE WITHOUT NOTICE. THIS IS NOT INTENDED TO BE AN OFFER TO SELL NOR A SOLICITATION OF OFFERS TO BUY A UNIT WHERE SUCH OFFERS OR SOLICITATIONS ARE PROHIBITED BY LAW. ADDITIONAL RESTRICTIONS MAY APPLY.

THE DEVELOPER RESERVES THE RIGHT TO MODIFY ANY OF THE PLANS FOR THE DEVELOPMENT DESCRIBED OR DEPICTED HEREIN AT ANY TIME IN THE DEVELOPER'S SOLE DISCRETION AND WITHOUT NOTICE. THESE MATERIALS AND THE FEATURES AND AMENITIES DESCRIBED AND DEPICTED HEREIN ARE ARTIST'S CONCEPTUAL RENDERINGS BASED UPON CURRENT DEVELOPMENT PLANS WHICH ARE SUBJECT TO CHANGE WITHOUT NOTICE. NO GUARANTEES OR REPRESENTATIONS WHATSOEVER ARE MADE THAT THE FEATURES, AMENITIES AND FACILITIES, AND EXISTING OR FUTURE VIEWS OF THE PROJECT AND SURROUNDING AREAS, DEPICTED BY ANY SUCH ARTIST'S RENDERINGS OR OTHERWISE DESCRIBED HEREIN, WILL BE PROVIDED, OR, IF PROVIDED, WILL BE OF THE SAME TYPE, SIZE, LOCATION OR NATURE AS DEPICTED OR DESCRIBED HEREIN.

ALL DIMENSIONS ARE APPROXIMATE AND ALL FLOOR PLANS AND DEVELOPMENT PLANS ARE SUBJECT TO CHANGE. THE FLOOR PLAN DEPICTED HEREIN IS A TYPICAL FLOOR PLAN FOR THE RESIDENCE TYPE INDICATED AND IS PROVIDED FOR INFORMATIONAL PURPOSES ONLY. THE ACTUAL FLOOR PLAN OF THE RESIDENCES MAY DIFFER. ALL FEATURES LISTED FOR THE RESIDENCES ARE REPRESENTATIVE ONLY AND THE DEVELOPER RESERVES THE RIGHT, WITHOUT NOTICE TO OR APPROVAL BY THE BUYER, TO MAKE CHANGES OR SUBSTITUTIONS OF EQUAL OR BETTER QUALITY FOR ANY FEATURES, MATERIALS AND EQUIPMENT.



RESIDENCE



LEVEL ONE

1360 ft² / 126 m²
1 Bedroom
1 Bathroom

ALL LEVELS

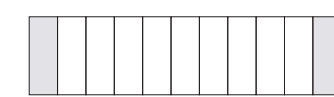
4 Bedrooms
4.5 Bathrooms

Indoor
4669 ft² / 434 m²

Outdoor
1551 ft² / 144 m²

Total
6220 ft² / 578 m²

CORNER UNITS



BOTTOM FLOOR



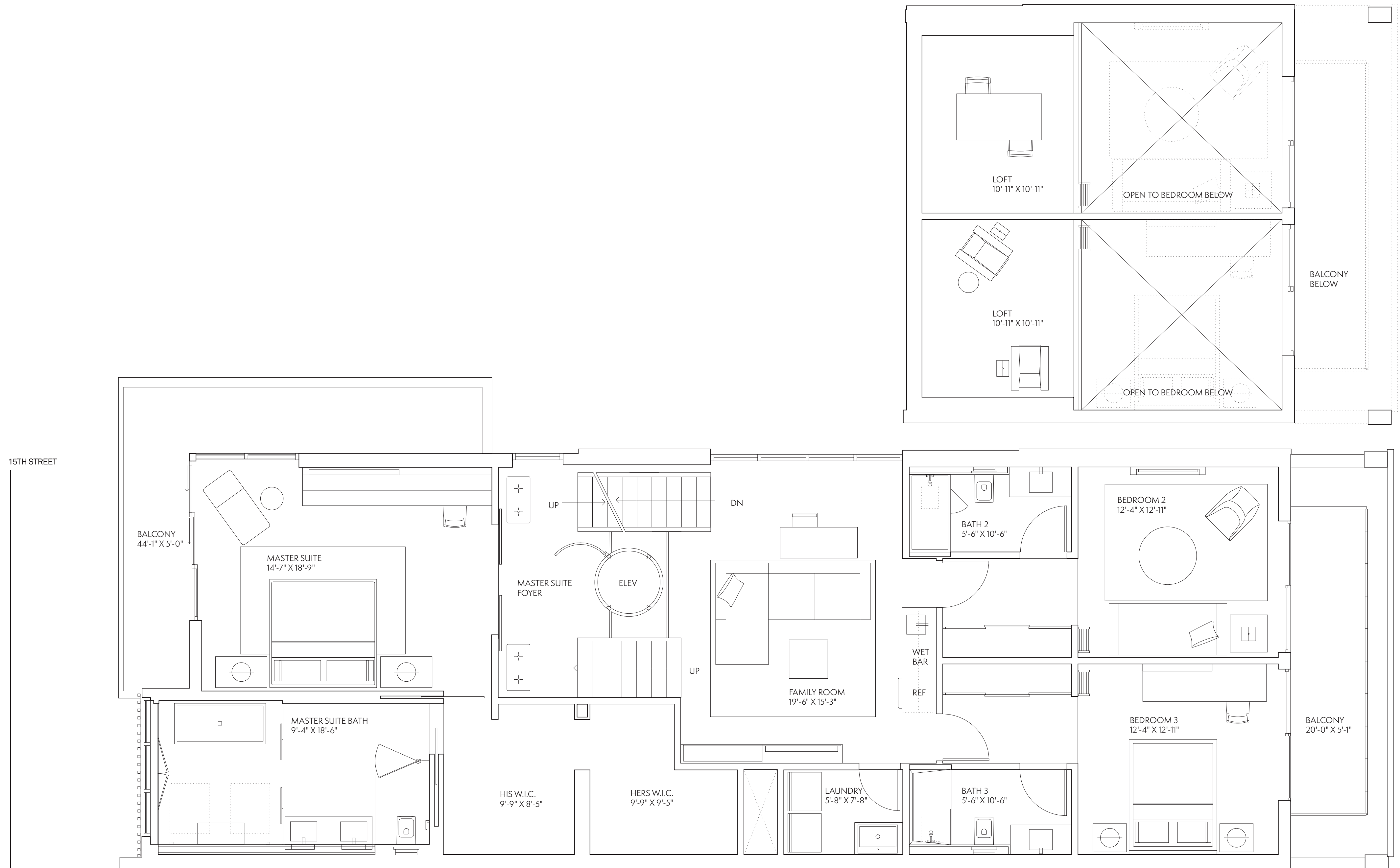
1/4" = 1'



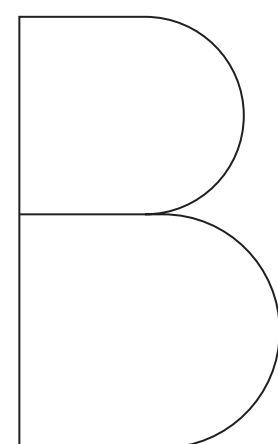
ORAL REPRESENTATIONS CANNOT BE RELIED UPON AS CORRECTLY STATING THE REPRESENTATION OF THE DEVELOPER. FOR CORRECT REPRESENTATIONS, MAKE REFERENCE TO THE DOCUMENTS REQUIRED BY SECTION 718.503, FLORIDA STATUTES. TO BE FURNISHED BY THE DEVELOPER TO A BUYER OR LESSEE. PRICES, PLANS AND SPECIFICATIONS ARE SUBJECT TO CHANGE WITHOUT NOTICE. THIS IS NOT INTENDED TO BE AN OFFER TO SELL NOR A SOLICITATION OF OFFERS TO BUY A UNIT WHERE SUCH OFFERS OR SOLICITATIONS ARE PROHIBITED BY LAW. ADDITIONAL RESTRICTIONS MAY APPLY.

THE DEVELOPER RESERVES THE RIGHT TO MODIFY ANY OF THE PLANS FOR THE DEVELOPMENT DESCRIBED OR DEPICTED HEREIN AT ANY TIME IN THE DEVELOPER'S SOLE DISCRETION AND WITHOUT NOTICE. THESE MATERIALS AND THE FEATURES AND AMENITIES DESCRIBED AND DEPICTED HEREIN ARE ARTIST'S CONCEPTUAL RENDERINGS BASED UPON CURRENT DEVELOPMENT PLANS WHICH ARE SUBJECT TO CHANGE WITHOUT NOTICE. NO GUARANTEES OR REPRESENTATIONS WHATSOEVER ARE MADE THAT THE FEATURES, AMENITIES AND FACILITIES, AND EXISTING OR FUTURE VIEWS OF THE PROJECT AND SURROUNDING AREAS, DEPICTED BY ANY SUCH ARTIST'S RENDERINGS OR OTHERWISE DESCRIBED HEREIN, WILL BE PROVIDED, OR, IF PROVIDED, WILL BE OF THE SAME TYPE, SIZE, LOCATION OR NATURE AS DEPICTED OR DESCRIBED HEREIN.

ALL DIMENSIONS ARE APPROXIMATE AND ALL FLOOR PLANS AND DEVELOPMENT PLANS ARE SUBJECT TO CHANGE. THE FLOOR PLAN DEPICTED HEREIN IS A TYPICAL FLOOR PLAN FOR THE RESIDENCE TYPE INDICATED AND IS PROVIDED FOR INFORMATIONAL PURPOSES ONLY. THE ACTUAL FLOOR PLAN OF THE RESIDENCES MAY DIFFER. ALL FEATURES LISTED FOR THE RESIDENCES ARE REPRESENTATIVE ONLY AND THE DEVELOPER RESERVES THE RIGHT, WITHOUT NOTICE TO OR APPROVAL BY THE BUYER, TO MAKE CHANGES OR SUBSTITUTIONS OF EQUAL OR BETTER QUALITY FOR ANY FEATURES, MATERIALS AND EQUIPMENT.



RESIDENCE



LEVEL TWO

3 Bedrooms
3 Bathrooms
2161 ft² / 200 m²

ATTIC SPACE
299 ft² / 27 m²

ALL LEVELS

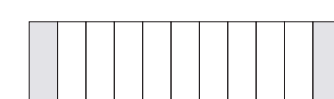
4 Bedrooms
4.5 Bathrooms

Indoor
4669 ft² / 434 m²

Outdoor
1551 ft² / 144 m²

Total
6220 ft² / 578 m²

CORNER UNITS



MIDDLE FLOOR



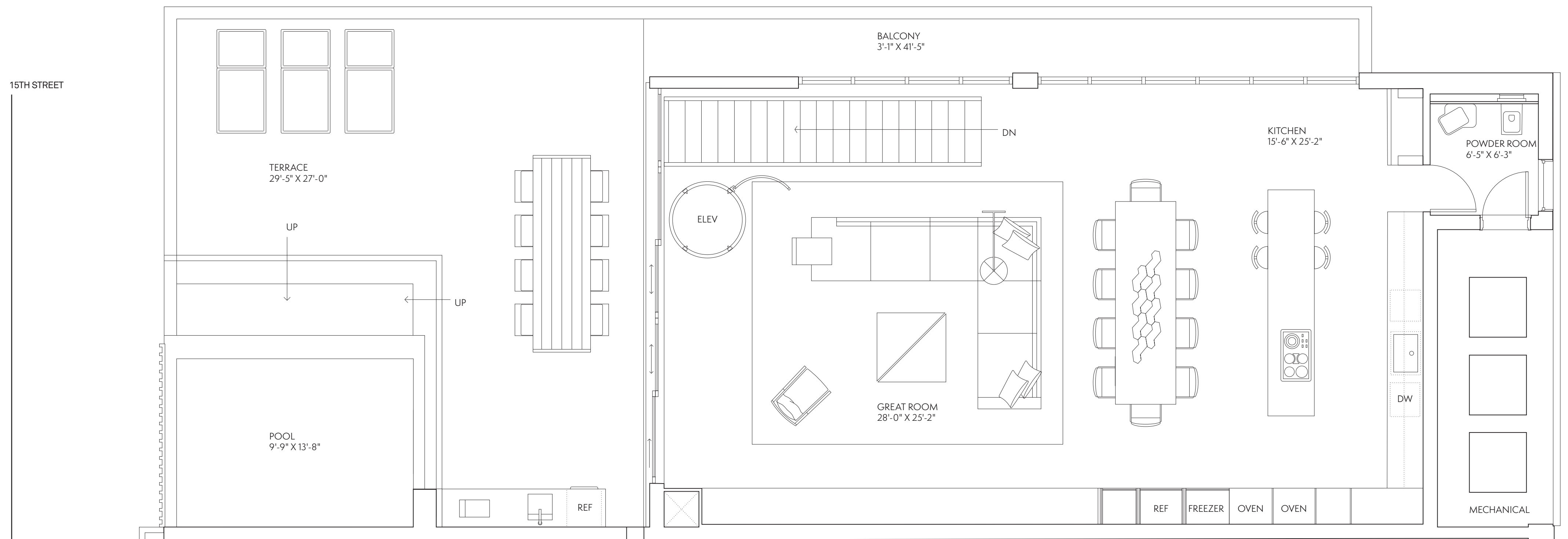
1/4" = 1'



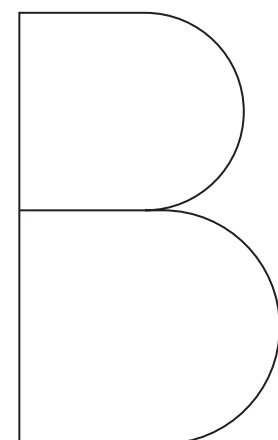
ORAL REPRESENTATIONS CANNOT BE RELIED UPON AS CORRECTLY STATING THE REPRESENTATION OF THE DEVELOPER. FOR CORRECT REPRESENTATIONS, MAKE REFERENCE TO THE DOCUMENTS REQUIRED BY SECTION 718.503, FLORIDA STATUTES, TO BE FURNISHED BY THE DEVELOPER TO A BUYER OR LESSEE. PRICES, PLANS AND SPECIFICATIONS ARE SUBJECT TO CHANGE WITHOUT NOTICE. THIS IS NOT INTENDED TO BE AN OFFER TO SELL NOR A SOLICITATION OF OFFERS TO BUY A UNIT WHERE SUCH OFFERS OR SOLICITATIONS ARE PROHIBITED BY LAW. ADDITIONAL RESTRICTIONS MAY APPLY.

THE DEVELOPER RESERVES THE RIGHT TO MODIFY ANY OF THE PLANS FOR THE DEVELOPMENT DESCRIBED OR DEPICTED HEREIN AT ANY TIME IN THE DEVELOPER'S SOLE DISCRETION AND WITHOUT NOTICE. THESE MATERIALS AND THE FEATURES AND AMENITIES DESCRIBED AND DEPICTED HEREIN ARE ARTIST'S CONCEPTUAL RENDERINGS BASED UPON CURRENT DEVELOPMENT PLANS WHICH ARE SUBJECT TO CHANGE WITHOUT NOTICE. NO GUARANTEES OR REPRESENTATIONS WHATSOEVER ARE MADE THAT THE FEATURES, AMENITIES AND FACILITIES, AND EXISTING OR FUTURE VIEWS OF THE PROJECT AND SURROUNDING AREAS, DEPICTED BY ANY SUCH ARTIST'S RENDERINGS OR OTHERWISE DESCRIBED HEREIN, WILL BE PROVIDED, OR, IF PROVIDED, WILL BE OF THE SAME TYPE, SIZE, LOCATION OR NATURE AS DEPICTED OR DESCRIBED HEREIN.

ALL DIMENSIONS ARE APPROXIMATE AND ALL FLOOR PLANS AND DEVELOPMENT PLANS ARE SUBJECT TO CHANGE. THE FLOOR PLAN DEPICTED HEREIN IS A TYPICAL FLOOR PLAN FOR THE RESIDENCE TYPE INDICATED AND IS PROVIDED FOR INFORMATIONAL PURPOSES ONLY. THE ACTUAL FLOOR PLAN OF THE RESIDENCE MAY DIFFER. ALL FEATURES LISTED FOR THE RESIDENCE ARE REPRESENTATIVE ONLY AND THE DEVELOPER RESERVES THE RIGHT, WITHOUT NOTICE TO OR APPROVAL BY THE BUYER, TO MAKE CHANGES OR SUBSTITUTIONS OF EQUAL OR BETTER QUALITY FOR ANY FEATURES, MATERIALS AND EQUIPMENT.



RESIDENCE



LEVEL THREE

.5 Bathroom
2400 ft² / 223 m²

ALL LEVELS

4 Bedrooms
4.5 Bathrooms

Indoor
4669 ft² / 434 m²

Outdoor
1551 ft² / 144 m²

Total
6220 ft² / 578 m²

CORNER UNITS



TOP FLOOR



1/4" = 1'



ORAL REPRESENTATIONS CANNOT BE RELIED UPON AS CORRECTLY STATING THE REPRESENTATION OF THE DEVELOPER. FOR CORRECT REPRESENTATIONS, MAKE REFERENCE TO THE DOCUMENTS REQUIRED BY SECTION 718.503, FLORIDA STATUTES. TO BE FURNISHED BY THE DEVELOPER TO A BUYER OR LESSEE. PRICES, PLANS AND SPECIFICATIONS ARE SUBJECT TO CHANGE WITHOUT NOTICE. THIS IS NOT INTENDED TO BE AN OFFER TO SELL NOR A SOLICITATION OF OFFERS TO BUY A UNIT WHERE SUCH OFFERS OR SOLICITATIONS ARE PROHIBITED BY LAW. ADDITIONAL RESTRICTIONS MAY APPLY.

THE DEVELOPER RESERVES THE RIGHT TO MODIFY ANY OF THE PLANS FOR THE DEVELOPMENT DESCRIBED OR DEPICTED HEREIN AT ANY TIME IN THE DEVELOPER'S SOLE DISCRETION AND WITHOUT NOTICE. THESE MATERIALS AND THE FEATURES AND AMENITIES DESCRIBED AND DEPICTED HEREIN ARE ARTIST'S CONCEPTUAL RENDERINGS BASED UPON CURRENT DEVELOPMENT PLANS WHICH ARE SUBJECT TO CHANGE WITHOUT NOTICE. NO GUARANTEES OR REPRESENTATIONS WHATSOEVER ARE MADE THAT THE FEATURES, AMENITIES AND FACILITIES, AND EXISTING OR FUTURE VIEWS OF THE PROJECT AND SURROUNDING AREAS, DEPICTED BY ANY SUCH ARTIST'S RENDERINGS OR OTHERWISE DESCRIBED HEREIN, WILL BE PROVIDED, OR, IF PROVIDED, WILL BE OF THE SAME TYPE, SIZE, LOCATION OR NATURE AS DEPICTED OR DESCRIBED HEREIN.

ALL DIMENSIONS ARE APPROXIMATE AND ALL FLOOR PLANS AND DEVELOPMENT PLANS ARE SUBJECT TO CHANGE. THE FLOOR PLAN DEPICTED HEREIN IS A TYPICAL FLOOR PLAN FOR THE RESIDENCE TYPE INDICATED AND IS PROVIDED FOR INFORMATIONAL PURPOSES ONLY. THE ACTUAL FLOOR PLAN OF THE RESIDENCES MAY DIFFER. ALL FEATURES LISTED FOR THE RESIDENCES ARE REPRESENTATIVE ONLY AND THE DEVELOPER RESERVES THE RIGHT, WITHOUT NOTICE TO OR APPROVAL BY THE BUYER, TO MAKE CHANGES OR SUBSTITUTIONS OF EQUAL OR BETTER QUALITY FOR ANY FEATURES, MATERIALS AND EQUIPMENT.